



DO IT RIGHT WITH THE RIGHT PRODUCTS

www.quicseal.com



QUICSEAL is a leading manufacturer and supplier of specialty construction materials. We continually strive to improve ourselves by the constant pursuit of innovation, service excellence and quality with our state-of-the-art Research & Development centre, and highly dedicated and experienced personnel.

Accredited with ISO 9001:2008 Quality Management and ISO 14001:2004 Environmental Management certification, we are also corporate member of the Singapore Green Building Council (SGBC) and supply products that are Green Label certified under the Singapore Environment Council (SEC) to express our support for the sustainable built environment.

We provide a wide and comprehensive range of solutions and systems for specific needs of construction, which includes the following areas:

- **Waterproofing, Sealers, Water Repellants**
- **Tile Adhesives, Mortar Additives, Stone Treatment & Protection**
- **Stain Removal**
- **Repairs & Refurbishments**
- **Flooring, Resurfacing & Restoration**
- **PVC Profiles & Joint Construction**

Customers' confidence and support were well reflected with the many projects completed locally and overseas such as Gardens By the Bay, Esplanade Theatres, Fullerton Hotel, Park Hyatt Maldives Hadahaa (Maldives), Double Pool Villa, Banyan Tree (Phuket, Thailand), Elements Mall (Hong Kong) etc.

Established since 1988, QUICSEAL has developed into an established and much trusted brand in Singapore and throughout the region. We are easily available through our wide network of distributors in not only Singapore, but Malaysia, Indonesia, China, Hong Kong, Taiwan, The Philippines, Pacific Islands, Cambodia, Maldives, Myanmar, Thailand, Vietnam, Brunei, Sri Lanka and others.



165581CC1-2014-AQ-GER-DAMKS



165582CC1-2014-AE-GER-DAMKS

THE PROFESSIONAL'S CHOICE OF QUALITY PRODUCTS AND SYSTEMS FOR BUILDING CONSTRUCTION

Our comprehensive range of material systems aims to provide our clients with well-tested and proven solutions that are effective and efficient.

2 WATERPROOFING & WATER REPELLANT

7 SEALANT

8 EPOXY

10 CONCRETE REPAIR & FLOORING

13 TILE ADHESIVE & ADDITIVE

15 MISCELLANEOUS



WATERPROOFING & WATER REPELLANT

2



Packaging
24kg/pail

Colour
Black

Consumption
1.2 – 1.4kg/m² per 2 coats



QUICSEAL 102M

Polyurethane (PU) waterproofing membrane
聚氨酯 (PU) 防水膜

USES

Waterproofing for concealed roofs, between slabs of parking decks, roof decks, plaza decks or courtyard areas, below-grade slabs, walls, lift pits, culverts, drains, and similar areas that require superior waterproofing properties.

FEATURES & BENEFIT

- Single-component – ready to use, no mixing required
- Easily applied by spray, brush, roller or trowel
- Excellent adhesion and low vapour permeability
- High elongation – able to bridge cracks up to 2mm width, when tested to ASTM C836
- Able to withstand high hydrostatic pressure

用途

为需要强力防水物料的区域提供防水作用，包括隐蔽式屋顶、停车平台的间隔厚板、屋顶平台、广场平台或庭院区、地下厚板、墙壁、电梯坑、暗渠、排水道及其他更多。

功能与效益

- 单组份：现成可用，无需混合
- 以喷涂装置、刷子、滚涂装置或泥刀来涂敷，简易方便
- 粘附性优越，蒸汽渗透性低
- 延伸性强 - 通过ASTM C836的测试，可连接宽达2毫米的缝隙
- 可承受较高的静水压力



Packaging
5kg/pail
20kg/pail

Colour
White, Grey, Euro Grey, Terracotta,
Brick Red, Red Oxide

Consumption
1.1 kg/m² per 2 coats



QUICSEAL 103MS

Acrylic waterproofing membrane
丙烯酸防水膜

USES

Waterproofing for concrete or clay-tiled roof, pitched roof with sufficient gradient to allow easy run-off, external wall seepage repair, and exposed areas that need protection against effects of UV rays.

FEATURES & BENEFITS

- Single-component – ready to use, no mixing required
- Can be applied by brush, roller or spray
- Can be painted over with good quality acrylic paint.
- Can be used to conceal hairline cracks and shrinkage cracks less than 0.4 mm width

用途

为混凝土或陶土瓦屋顶、倾斜度足以排水的斜屋顶、需修复的漏水外墙、以及需抗UV紫外线防护的外露区域提供防水作用。

功能与效益

- 单组份：现成可用，无需混合
- 能以刷子、滚涂装置或喷涂装置来涂敷
- 能以优质丙烯酸漆料来上漆盖过
- 能用以掩盖宽度小于0.4毫米的毛细裂缝与收缩裂缝



Packaging
12kg/set
36kg/set

Colour
Grey

Consumption
2 – 2.2kg/m² per 2 coats



QUICSEAL 104M

Two-component, flexible cementitious waterproofing membrane
双组份、柔性胶结性防水膜

USES

Waterproofing for kitchens, bathrooms, balconies, swimming pools, water features, planter boxes, gutters etc.

FEATURES & BENEFITS

- Pre-packed – Easy to mix and apply
- Excellent adhesion to concrete, steel, galvanized sheet metal, PVCs, copper etc
- Flexible – able to bridge cracks up to 2mm width, when tested to ASTM C836
- Does not contain chloride or other corrosive salts which cause efflorescence
- Can be applied onto damp substrates

用途

适用于厨房、浴室、阳台、泳池、水造景、播种箱及排水沟等的防水作用。

功能与效益

- 预先包装 - 易于混合与用量
- 易于粘附在混凝土、钢制品、镀锌铁皮、聚氯乙烯与铜制品等的表面
- 弹性大 - 通过ASTM C836的测试，可连接宽度高达2毫米的裂缝
- 不含可导致风化的氯化物或其他腐蚀性盐
- 能涂敷于潮湿的基板

3



Packaging
5kg/pail
20kg/pail

Colour
White

Consumption
12 – 16m² per kg



QUICSEAL 105M

Water-based, polymeric solution for dampness sealing and waterproofing
可密封湿气及防水的水性聚合物方案

USES

Waterproofing for concrete rooftop, brick end walls, cement fibreboards, and dampness sealing of leaking kitchen, toilet soffit, internal and external walls before painting.

FEATURES & BENEFITS

- Single-component – ready to use, no mixing required
- Can be applied by brush, roller, injection
- Can be used to seal fine hairline cracks
- Can be paintable with emulsion paint
- Low viscosity – allows sufficient penetration into substrate

用途

适用于混凝土屋顶、砖侧壁及水泥纤维板防水层，同时也可作为漏水厨房、厕所浴室拱腹、内外墙油漆前的湿气密封层。

功能与效益

- 单组份 - 现成可用，无需混合
- 可以刷子、滚涂装置或注射器用量
- 可用于修补毛细裂缝
- 可与乳胶漆一起漆绘使用
- 低粘性 - 可充分渗透至基层层

WATERPROOFING & WATER REPELLANT



Packaging
20 litres/set

Colour
Grey

Consumption
0.66lts/m² per 2 coats



QUICSEAL 119

Epoxy membrane for negative hydrostatic pressure

适用于负液体静压力的环氧基树脂膜

USES

Water-based, epoxy polyamide waterproofing membrane/barrier coating that has been specifically designed for use in negative water pressure applications, as well as used as a low water vapour transmission coating & damp proof membrane to prevent rising dampness in floors.

FEATURES & BENEFITS

- Can withstand 250kPa of hydrostatic pressure (25m head of water)
- Can be over-coated using almost any decorative or industrial finishing paint
- Safe to use in sensitive locations (e.g. around food or habitable areas)
- Easy to clean, non-flammable
- Can be applied to freshly laid hardened (green) concrete
- Can be used in potable water tank

用途

水性环氧聚酰胺防水薄膜，专为负水压运用而设，同时也可作为低水汽传动层或预防地板湿气的防潮膜。

功能与效益

- 能抵挡高达250千帕的液体静压力（水头25米）
- 涂层表面可涂装几乎所有的装饰或工业用面漆
- 敏感区（食品周边或居住区域）也可安全使用
- 易于清洗，不易燃
- 能用量在新浇的混凝土上
- 能用于饮水水槽



Packaging
5kg/pail
20kg/pail

Colour
Black

Consumption
0.8kg/m² per 2 coats



QUICSEAL 124M

One-component, polymer-based waterproofing membrane
单组份的聚合物基底防水膜

USES

Water-based waterproofing for kitchens, bathrooms, balconies, drywall boards, gable end walls etc.

FEATURES & BENEFITS

- Single-component – ready to use, no mixing required
- Can be applied by brush, roller, injection
- Quick drying (4 hours before screeding)

用途

适用于厨房、浴室、阳台、干墙板及端墙等水性防水膜。

功能与效益

- 单组份：现成可用，无需混合
- 那以刷子、滚涂装置或注射器来涂敷
- 速干（沙浆底层前4小时）



Packaging
22.5kg/set

Colour
Grey

Consumption
2 – 2.5kg/m² per 2 coats



QUICSEAL 144

Cementitious waterproofing membrane
水泥基防水膜

USES

Two-component waterproofing for kitchens, bathrooms, balconies and etc.

FEATURES & BENEFITS

- Pre-packed – Easy to mix and apply
- Good adhesion to concrete, masonry substrates etc
- Does not contain chloride or other corrosive salts which cause efflorescence
- Can be applied onto damp substrates

用途

适用于厨房、浴室、阳台、的双组份防水膜。

功能与效益

- 预先包装 - 易于混合及涂敷
- 易于粘附在混凝土及砌体基板
- 不含可导致风化的氯化物及其他腐蚀性盐
- 能用于潮湿基板

5



Packaging
24kg/pail

Colour
Grey

Consumption
1.0 – 1.2kg/m² per 2 coats



QUICSEAL 161

Polyurethane (PU) waterproofing membrane -
exposed use

聚氨酯防水膜 - 露天用

USES

Waterproofing for exposed RC roofs, metal roofs, platforms of bridges, verandas, balconies, exposed RC floors (foot traffic) and similar areas that require a material with good chemical, UV, mechanical and thermal resistance. Prime the surface with QUICSEAL 133 primer for enhanced adhesion to substrate.

FEATURES & BENEFIT

- Single-component – ready to use, no mixing required
- Easily applied by brush or roller
- Excellent UV and weather resistance
- High abrasion resistance
- Good adhesion on various substrates

用途

适用于露天的钢筋混凝土屋顶、金属屋顶、桥墩、阳台、露天钢筋混凝土楼板（行走用）及类似区域的防水膜，特点包括抗化学性、抗紫外线性、伸缩性及抗热性高。可预先在表面涂抹QUICSEAL 133 底层涂料，加强基质的黏着性。

功能与效益

- 单一组份：可即时使用
- 易于涂抹，以刷子或滚轮涂抹即可
- 抗紫外线及耐候腐蚀
- 抗磨损
- 附着力强，可粘结于各种基面上

WATERPROOFING & WATER REPELLANT



Packaging

QUICSEAL 172 – 20kg/pail

QUICSEAL 171 – 2kg/bottle

Colour

QUICSEAL 172 – Brown

QUICSEAL 171 – Pinkish



QUICSEAL 172

Polyurethane (PU) injection resin

聚氨酯堵漏材料

USES

Hydrophobic PU injection resin which reacts with the water present in the injected area (masonry, concrete) to form a dense, closed cell foam to seal gaps, leaks and stop water ingress. To be used with QUICSEAL 171 catalysts for enhanced product performance and reduced reaction time.

FEATURES & BENEFITS

- Non-shrink hydrophobic formula
- Fast reacting within one minute
- Resistant to salt water and mild acids
- Semi flexible to accommodate slight movement within cracks

用途

疏水聚氨酯注塑树脂可针对注塑区域（石造、混凝土）的现存水反应，形成一层密实的闭孔发泡料，密封起缝隙、漏缝，防止渗水。配合QUICSEAL 171催化剂使用，有助加强产品性能，并减少反应时间。

功能与效益

- 防缩疏水配方
- 反应时间短
- 可防盐水与弱酸
- 半柔性，可接纳及适应裂缝间的轻微移动



Packaging

4 x 6kg per box

Colour

Grey

Consumption

0.75% to 0.90% by weight of cement content



QUICSEAL 192

Concrete Admixture

混凝土掺合料

USES:

Chemical admixture in the form of grey powder that is added into concrete and mortars to impart selfsealing and waterproofing properties. During the curing stage, it enhances the concrete's hydration process by forming massive hydration crystal growth.

FEATURES & BENEFITS:

- Integral protection is maintained even if surface of concrete is damaged
- Self-seal static cracks up to 0.4mm from subsequent shrinkage, settling or shifting
- Facilitates backfilling – saving time and money
- Economical – easy to apply and install compared to other systems

用途:

是一种灰色粉末状的化学掺合料，用于混入混凝土中，以起自我密合与防水的作用。在固化阶段时，它可形成一层大体积水化晶体，加强混凝土的水化过程。

功能与效益:

- 即使混凝土表面受损，仍可维持整体的防护功能。
- 可自我密合高达0.4毫米，因收缩、沉降或移动而造成的静态裂缝。
- 便于回填—节省开支与时间。
- 经济—相较于其他系统，更易于使用与安装。



Packaging

4 ltr/set (Pouring Grade)
2.5 ltr/set (Gun Grade)

Colour

Grey

Consumption

Pouring grade – 20 metre run per set
(based on 20mm x 10mm joint)
Gun grade – 12.5 metre run per set
(based on 20mm x 10mm joint)



QUICSEAL 208

Polysulphide joint sealant

多硫化物填缝料

USES

Two-component joint sealant for sealing joints that are subjected to structural movement as well as non-moving joints against infiltration of water and dirt. It is used in damp areas, concrete road, parking apron, concrete roof panel etc

FEATURES & BENEFITS

- Cold applied – no heating equipment required
- Fuel, oil and hydraulic fluid resistant
- Chemical resistant
- Provides a permanent watertight seal
- Low modulus of extension – prevents cohesive and adhesive failure with aging

用途

双组份填缝料，可填补专为构造移动而设的接口，以及抗水与尘土渗漏的非移动接口。适用于潮湿区域、混凝土道路、停车护床及混凝土屋顶面板等。

功能与效益

- 常温涂敷：无需加热设备
- 抗燃料、抗油及抗液压流体
- 抗化学物
- 提供永久性不透水密封垫
- 低延展系数 - 预防因老化而渐失粘附力



Packaging

600ml/cartridge

Colour

Grey, White, Black

Consumption

12 metre run per sausage
(based on 10mm x 5mm joint)



QUICSEAL 210

Modified Silicone (MS) sealant

改性硅酮 (MS) 密封剂

USES

One-component hybrid joint sealant to be used as construction sealant for cementitious building materials, ceramics, glass, metal, anodized aluminum, wood etc.

FEATURES & BENEFITS

- Single component – no mixing required
- Can be painted over with most types of paints
- Non-sag on vertical surfaces
- Excellent adhesion even without primer
- Non-staining to most substrates such as aluminum, steel, natural stones, tiles
(For use with natural stones, patch test is recommended)

用途

单组份的混合接口密封剂，可作为粘结性建筑材料、陶瓷、玻璃、金属、阳极氧化铝及木料等的建筑密封膏。

功能与效益

- 单组份 - 无需混合
- 表面能使用大部分类型的漆料涂漆
- 在垂直面上也不会下垂
- 即使无底漆，依然保持超强粘附性
- 对大部分基板如铝、钢、天然石及瓷砖等均不会造成污染



Packaging
3kg per set
12kg per set

Colour
Grey

Consumption
1.85 – 1.95kg per m² per mm



QUICSEAL 301

Epoxy Mortar
环氧砂浆

USES

Two-component, high strength epoxy resin mortar for repairs, bedding and fixing. When mixed, it produces an impermeable and chemically resistant mortar.

FEATURES & BENEFITS

- Fast cure by chemical reaction
- High compressive and tensile strength
- Excellent resistance to water, oil, petrol and chemicals
- Ability to cure in underwater condition

用途

双组份、高强度环氧树脂砂浆，可用于修补、铺垫与修理等用途。混合时，可产生一层不透水及抗化学砂浆。

功能与效益

- 通过化学反应快速固化
- 高耐压强度与拉伸力
- 高效防水、防油、防汽油及防化学力
- 即使是在水底也可固化



Packaging
1.5kg/set
6kg/set

Colour
Amber

Consumption
13m per litre (25mm deep x 3mm wide)



QUICSEAL 302LV

Low viscosity epoxy injection resin
低黏度环氧注塑树脂

USES

Two-component, low viscosity epoxy injection resin specially designed to repair cracks in concrete and masonry structures and fill cavities in hollow walls and floors.

FEATURES & BENEFITS

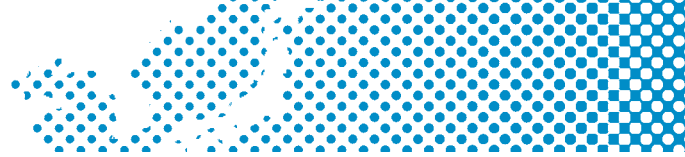
- Non-shrink – negligible volume shrinkage after cure
- Fast curing
- Low viscosity – allows penetration into fine gaps
- Adheres well to damp substrates

用途

双组份的低黏度环氧注塑树脂是特别为修补混凝土与石头，及钢架结构的裂缝而研发的材料，也可填补空心墙及地板凹洞。

功能与效益

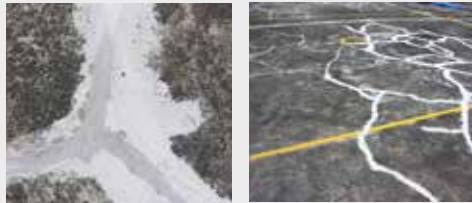
- 防缩-修补后体积无收缩
- 快速填补
- 低黏度—可渗透至细缝
- 可高度粘附于潮湿的基质上



Packaging
2kg/set

Colour
Grey

Consumption
1m² per litre per 1mm thickness
(on a smooth surface)



QUICSEAL 304

Epoxy putty
环氧腻子

USES

Two-component epoxy system for bonding precast concrete, anchoring bolts and dowel bars, sealing of cracks, repairing of concrete, and bonding of dissimilar materials.

FEATURES & BENEFITS

- Good adherence to damp surfaces
- Cures with undetectable shrinkage
- Fast-set repair
- Impermeable to water, oil, petrol and chemical spillage

用途

双组份环氧系统，可用于粘合预铸混凝土、锚栓与传力杆、填补裂缝、修补混凝土及粘合不同类的物料。

功能与效益

- 强力粘附在潮湿的表面
- 修复无可侦测的缩孔
- 快凝修复
- 防水、油、汽油及化学溢物渗透



Packaging
5kg/set

Colour
Clear

Consumption
0.8-1.2kg per m² per 10 mm



QUICSEAL 640

Epoxy stone binder
环氧石米粘合剂

USES

Two-component, solvent-free based adhesive for binding pebbles and aggregates to form a clear, hard and moisture resistant film.

FEATURES & BENEFITS

- Excellent adhesion between binded pebbles and substrates
- High abrasion resistance to foot traffic
- Good water resistance

用途

为双组份、无溶剂的粘合剂，可粘合石米，形成透明坚硬的抗湿气涂层。

功能与效益

- 可粘合石米与水泥基面基质
- 高度抗磨损性，减轻行走量留下的磨损痕迹
- 抗水性强

CONCRETE REPAIR & FLOORING



Packaging
25kg/set

Colour
Grey

Consumption
1.9kg per m² per mm



QUICSEAL 579

Fast-setting, self leveling overlayment
快凝自流平砂浆

USES

Two-component, fast-setting, polymer-modified self leveling mortar designed to be applied over concrete slab, screed or tiled floor for foot traffic. Highly recommended to be used with QUICSEAL 113 primer.

FEATURES & BENEFITS

- Early strength gain
- Prepacked - easy to mix and apply
- Good adhesion to concrete
- Slip resistant

用途

双组份快凝聚合物改性自流灰浆可涂抹于混凝土走廊、砂浆层及铺砖路面上，修补因长期行走使用造成的磨损。建议与QUICSEAL 113底层涂料一起使用。

功能与效益

- 初期强度提升
- 预先包装—易于搅拌及使用
- 容易附着于混凝土表面
- 防滑

QUICSEAL 510

Non-shrink grout
无收缩灌浆料

USES:

Flowable, cementitious grout for use in bedding bearing plates in precast wall panels, beams, columns, handrail fixing, pressure grouting, void filling, and concrete repairs.

FEATURES & BENEFITS:

- Suitable for pumping or pouring over a wide range applications
- Chloride-free composition allows high early strength development
- Does not contain iron which may cause staining

用途:

可流动的胶结性灌浆料，可用作预铸墙板、梁、柱、栏杆固定、压力灌浆、空隙填补及混凝土修补的承重板基床。

功能与效益:

- 适合广泛应用范围的泵送或铺敷
- 零氯化物成分，因而早期强度发展大
- 不含会导致生锈的铁成分



Packaging
25kg/bag

Colour
Grey

Consumption
One bag will yield 12 to 13.5 litres





Packaging
1kg/tin
4.5kg/tin

Colour
Grey

Consumption
1.45 metre run per kg
(based on 20mm x 20mm joint)



QUICSEAL 516

Water plug
泄水孔塞

USES:

Fast-setting hydraulic cement powder for use to stop leakage and seepage through general masonry, concrete, floor-to-wall junctions, and walls and around inserts such as concrete pipes and sleeves. It can be used above and below grade to plug holes, static cracks and faults.

FEATURES & BENEFITS:

- Plugs cracks in concrete and masonry surface instantaneously
- Fast-setting
- High early and ultimate compressive and tensile strength
- Non-metallic and non-toxic
- Chloride free

用途:

快凝水压水泥粉, 可用于阻止一般砖体、混凝土、地板与墙壁接口、墙壁与嵌入物如混凝土水管与套管等的渗漏状况。可在平面或底层使用, 堵住漏孔、静态裂纹与断层。

功能与效益:

- 瞬间修补混凝土与砖体表面的裂缝
- 快凝速干
- 早后期压缩及延展力强
- 不含金属及无毒
- 零氯化物

11



Packaging
24kg per set

Colour
Pigmented or clear

Consumption
0.125kg per m² @ 50microns DFT



QUICSEAL 529

Water-based polyurethane coating
水性聚氨酯涂料

USES:

Three-component, high performance coating designed for use as a durable topcoat to receive foot traffic.

FEATURES & BENEFITS:

- Water-based, environmentally friendly
- Durable and hardwearing
- UV resistant, anti-fungus and anti-algae

用途:

三组份高性能涂料, 用作表面涂层, 耐用耐磨, 以承受行人行走。

功能与效益:

- 水性基底
- 耐用耐磨
- XXXXXXXXX

CONCRETE REPAIR & FLOORING



Packaging
30kg/set

Colour
Grey

Consumption
2.1kg per m² per mm



QUICSEAL 531

Resurfacing mortar
重铺砂浆

USES:

Acrylic polymer cement-based repair mortar to be used for general resurfacing, patching and repairing of concrete surface with high vehicular traffic, and topping of new and old concrete floors to increase skid and wear resistance. It is suitable for warehouses, car parks & driveways, bus bays, concrete roads, docks etc.

FEATURES & BENEFITS:

- Pre-packed – easy to mix and apply
- Excellent bond strength to substrates
- Excellent abrasion and impact resistance
- High flexural and tensile strength
- Can be applied onto damp substrate (no free water on substrate)

用途:

丙烯酸类高聚物水泥底修复灌浆，适用于高车流量的混凝土表面的一般重铺、修补与修复工程，与铺设新旧混凝土地板，以加强其防滑耐磨性。适用于仓库、停车场与车道、巴士站、混凝土道路及码头等。

功能与效益:

- 预先包装 - 易于混合使用
- 对基板发挥高粘合力
- 高防磨及防冲击性
- 高塑性与延展力
- 能涂敷在潮湿基板上（确保基板表面不沾水）



Packaging
25kg per bag

Colour
Grey

Consumption
2kg per m² per mm



QUICSEAL 532

Fast-set pre-packed screed
快干预先包装砂浆层

USES:

Single component, high quality cementitious screed for use in general screeding applications in areas where return to service in two hours is critical.

FEATURES & BENEFITS:

- Early strength gain
- Easy to use by simply adding water
- Good abrasion and impact resistance
- Low shrinkage

用途:

单组份优质水泥砂浆，一般用于整平急需在两小时内重新使用的范围。

功能与效益:

- 早期强度增加
- 仅需加水，易于使用
- 耐磨性与抗冲击性强
- 低收缩力



Packaging
25kg/bag

Colour
Grey

Consumption
2.2kg per m² per mm



QUICSEAL 534

Pre-packed screed
预先包装砂浆层

USES:

Single component, high quality cementitious screed for use in general screeding applications.

FEATURES & BENEFITS:

- Premixed for good consistent quality
- Easy to use by simply adding water
- More durable flooring

用途:

单组份的优质粘合砂浆层，适用于一般砂浆层工序。

功能与效益:

- 预先混合以确保品质更一致
- 仅需加水，易于使用
- 地板铺设更耐用

13



Packaging
25kg/bag

Colour
Grey

Consumption
1.5kg per m² per mm



QUICSEAL 571

Self-levelling underlayment
水泥自流平地坪

USES

Single component, rapid-setting, self-levelling polymer-modified compound which is easily applied over concrete floors as an interior underlayment for carpets, vinyl floor coverings, tiles, natural stones or subsequent placement.

FEATURES & BENEFITS

- Early strength gain – ready for foot traffic after 3 hours
- Excellent flowability
- Excellent adhesion to concrete
- Low shrinkage
- Chloride free

用途

单组份速凝自流聚合物改性材料，易于涂敷在混凝土地面，充当地毯、乙烯地板覆盖物、瓷砖、天然石或随后铺设的室内地坪。

功能与效益

- 早期强度大增 - 3小时后即可行走其上
- 流动性高
- 强力附着于混凝土上
- 低收缩力
- 零氯化物

TILE ADHESIVE & ADDITIVE



Packaging
25kg/bag

Colour
Grey

Consumption
1.65kg per m² per mm



QUICSEAL 600STD

Tile adhesive
瓷砖粘着剂

USE:

Single component tile adhesive for bonding homogenous, ceramic tiles, natural stones on both wall and floor, internal and external areas on conventional cement-sand screeds and renders.

FEATURES & BENEFITS

- Prepacked - Easy to mix and apply
- Good adhesion strength

用途

单组份的瓷砖粘着剂，可在墙或地板上、室内外区域的传统水泥砂浆浆层与底层上，粘附同类、陶瓷瓷砖、天然石等。

功能与效益

- 预先包装 - 易于混合与涂敷
- 粘着性强

EN 12004 Classification 分类 : C1T



Packaging
25kg/bag

Colour
Grey, White

Consumption
1.65kg per m² per mm



QUICSEAL 601

High-strength tile adhesive
高强度瓷砖粘着剂

USES:

Single component tile adhesive for bonding large-sized homogenous, ceramic tiles, natural stones on both wall and floor, internal and external areas on conventional cement-sand screeds and renders.

FEATURES & BENEFITS

- Prepacked - Easy to mix and apply
- Good adhesion strength
- Good water resistance

用途

单组份瓷砖粘着剂，可在地板或墙上、室内外区域的传统水泥砂浆浆层与底层上，粘附大尺寸的同类、陶瓷瓷砖、天然石等。

功能与效益

- 预先包装 - 易于混合与涂敷
- 粘着性强
- 高防水性

EN 12004 Classification 分类 : C2TE



Packaging
25kg/set
100kg/set
1000kg/set

Colour
Grey, White

Consumption
1.65kg per m² per mm



QUICSEAL 602 + 604

High performance tile adhesive
高性能瓷砖粘着剂

USES

Two-component, polymer modified tile adhesive for bonding large-sized homogenous, ceramic tiles, natural stones on both wall and floor, internal and external areas on conventional cement-sand screeds and renders, in swimming pools and for tile-on-tile installations.

FEATURES & BENEFITS

- Prepacked - Easy to mix and apply
- Good adhesion strength
- Good water resistance
- Good durability

用途

双组份高分子改性瓷砖粘着剂，在地板或墙上、室内外区域的传统水泥砂浆浆层与底层上，或泳池内，粘附大尺寸的同类、陶瓷瓷砖、天然石等，也可用作在瓷砖上再铺一层瓷砖的粘着剂。

功能与效益

- 预先包装 - 施
- 粘着性强
- 高防水性
- 持久耐用

EN 12004 Classification 分类: C2TES1

15



Packaging
5kg/pail
20kg/pail
200kg/drum

Colour
Milky White

Consumption
0.2 – 0.3kg per m² per coat
(as a bonding coat)
0.8 – 1kg per m² per 20mm
(as a cement modifier)



QUICSEAL MPBA

Multi-purpose bonding agent
多用途粘合剂

USES

Specially formulated latex admixture or bonding agent to improve the adhesion of screeds, renders, patching and repair mortars to concrete and cement-sand substrates as well as for bonding tiles.

FEATURES & BENEFITS

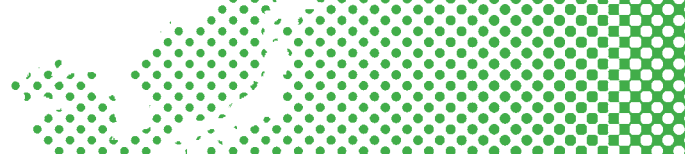
- Improves cohesion and adhesion strength of screed and render
- Improves water resistance of screed and render
- Good durability

用途

特别配方的乳胶混合物或粘合剂，可改善砂浆层、底层的粘附力，修补混凝土及水泥砂浆板灌浆料，以及粘合瓷砖等。

功能与效益

- 改善砂浆层与底层的粘合力
- 加强砂浆层的防水性
- 更加持久耐用



Packaging
25mm x 19mm x 5m per roll
20mm x 15mm x 7.5m per roll

Colour
Black

Consumption
5m per roll
7.5m per roll



QUICSEAL 702

Hydrophilic Butyl Rubber Swellable Waterstop
遇水膨胀丁基橡胶止水条

USES

Combining the properties of a rubber-based sealant and butyl sealant, it swells in a controlled manner when exposed to moisture and forms a self-healing joint material around the substrate.

FEATURES & BENEFITS

- No premature swelling, allows concrete to gain strength before expansion
- No adhesive or cutting required for overlapping
- Excellent for application for rough concrete surface
- Solves detailing problems in construction
- Easy to install by bonding with a suitable adhesive or casting into joint faces

用途

橡胶止水条是采用一种既有丁基橡胶制品的特性，又有遇水膨胀、以此止水的功能。

功能与效益

- 不会过早膨胀，让混凝土在扩张前增强强度
- 重叠时无需粘合或裁剪
- 尤其适合应用于粗糙的混凝土表面
- 解决施工期间的细节问题
- 易于安装，仅需以合适的黏合剂粘合或铸造成接合面即可

QUICSEAL 705

Protection sheet for marbles/tiles/parquet
大理石/瓷砖/木地板的保护层



Packaging
1m x 32m per roll

Colour
Black

Consumption
32m² per roll



USES

Non-staining, high quality protection sheet for finishes such as tiles, natural stones, wood flooring etc.

FEATURES & BENEFITS

- Reusable
- Lightweight for easy transportation
- Good impact resistance
- Chemical resistance

用途

为瓷砖、天然石、木地板等成品而设的不污染优质保护层。

功能与效益

- 可循环再用
- 材料轻便，容易运输
- 抗压力强
- 可抗化学物质





**THE PROFESSIONAL'S CHOICE OF
QUALITY PRODUCTS AND SYSTEMS
FOR BUILDING CONSTRUCTION**

QUICSEAL CONSTRUCTION CHEMICALS PTE LTD

No. 7 Eunos Ave 8A
Eunos Industrial Estate
Singapore 409460

Tel: (65) 6742 4466
Fax: (65) 6741 4666

Website: www.quicseal.com

Email: sales_sg@quicseal.com

DISTRIBUTOR