

Cordless Crowfoot Nutrunners With Transducer

Crowfoot Series

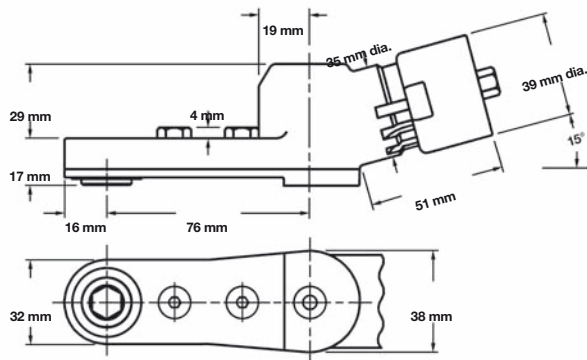
Torque range
10.5 - 30 Nm

Bolt size
M6 - M8

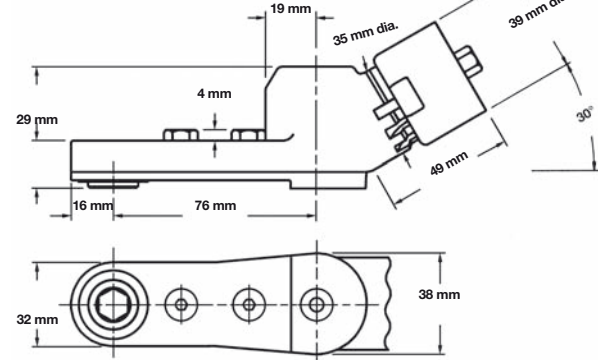
- Brushless precision motor
- High-resolution resolver
- Exact torque measurement by transducer
- Integrated electronic intelligence with power management and I/O signal processing
- Integrated servo



C1 – 15° head (order no. 301071)
Maximum recommended torque: 30 Nm



C3 – 30° head (order no. 301072)
Maximum recommended torque: 30 Nm



Crowfoot nutrunner nomenclature

Socket identifier

47 | **B** | **C** | **X** | **X** | **B** | **XX** | **CS** | **XX** | **X** | **X**

Motor
47 - Batt./PM48

Supply
B - Batt./PM48

Tool Version
C - Crowfoot nutrunner

Data Transfer
Y - WLAN: Dual band 2.4 GHz, 5 GHz
Z - Xbee: IEEE 802.15.4 (4 tools per access point)

Options
S - Barcode scanner
- None

Input Voltage
B - 26V-48V

Head Version
C1 - 15°
C3 - 30°

Head
CS - Crowfoot

Type of Output Drive
1 - Thru hex

Extensions
0 - Flush 4 - 1/2" 6 - 3/4"

Socket Sizes

EA - 1/4" MA - 7 mm MF - 12 mm
EC - 3/8 MB - 8 mm (5/16) MG - 13 mm
EE - 1/2 MC - 9 mm MH - 14 mm
EF - 9/16 MD - 10 mm MI - 15 mm
ME - 11 mm (7/16)

Crowfoot Nutrunner	Torque Range	Free Speed (rpm)			Weight Without Battery	Output Drive Size	Length with Battery	
		Batteries		PM48			26 V	44 V
Order No.	Nm	26 V*	44 V*	48 V	kg	mm	mm	
47BCYSB30C1	10.5-30	186	326	326	2.81	15	667	648
47BCYSB30C3	10.5-30	186	326	326	2.81	15	660	641

* Free speed with fully charged battery.

General: All tools must be used with a suitable Cleco/DGDNutrunner controller or PC software solution.

Weight of the batteries 26-V Li-ion battery 0.50 kg, 44V Li-ion battery 0.85 kg

Optional accessories: Batteries and battery chargers are not included the standard equipment. You will find all accessories on pages 133 and 134 of this catalogue.

For special versions of sockets, please use the prefix "CS" (e.g.: CSEE01 for 1/2", flush, thru hex)

Cordless Freedom

or

Corded High-Speed



The Choice Is Yours.



44V Li-Ion Battery Technology

- Up to 83% faster than with 26 V battery
- Up to 1700 fastening operations/battery charge (hard fastening case)
- Service life > 800 charging cycles
- Integrated intelligence
 - Display for charge state, charging cycles
 - PC diagnostics interface (936492PT)
- Battery can be changed with 1 hand, 1 central locking tab

To ensure maximum availability, the cells and the electronics are embedded in an optimally designed holder.



Central locking tab



5-segment display for additional status information on the battery

Charge cycles – incl. after removal from charger*

Indication	Charge Cycles
■ ■ ■ ■ ■	0 – 199
■ ■ ■ ■ □	200 – 399
■ ■ ■ □ □	400 – 599
■ ■ □ □ □	600 – 799
■ □ □ □ □	> 800

* Flashing indication for 5 sec. after battery is removed from the battery charger.

Charge state – indication with active battery*

Indication	Charge State
□ □ □ □ □	Sleep mode or faulty
■ □ □ □ □	< 20 %
■ ■ □ □ □	20 – 40 %
■ ■ ■ □ □	40 – 60 %
■ ■ ■ ■ □	60 – 80 %
■ ■ ■ ■ ■	80 – 100 %

* Normal indication as long as battery is not in the sleep mode.



936491PT

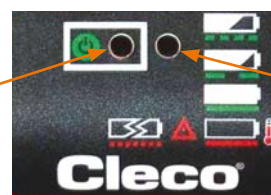
Multi-Battery Charger for 26/44 V Batteries

- Automatic battery detection 26 V/44 V
- Charging time only 1 hour
- Autom. wide range input (85-275 VAC)
- LEDs for supply voltage and status

Charger Indication for Informative State Information

Supply Voltage

LED Indic.	Status
●	No supply voltage
●	Supply voltage OK



Red/green LED for Charge State and Fault

LED Indication	Status
●	No indication No battery inserted
● Slow green flashing (0.5 Hz)	Charge state > 80 %
● Fast green flashing (1 Hz)	Charge state < 80 %
● Green flashing	Charge state battery 100 %
● Red flashing	Excessively high battery cell temperature
● Fast red flashing (2 Hz)	Battery fault (Short circuit, faulty cells, etc.)

LiveWire Power Module PM 48

- Up to 83 % higher speeds!
- Wide range input – (85-275 VAC)
- LEDs for power & status
- Electronic monitoring
- Solid metal housing
- Low weight – only 3.1 kg



Power Module

Order No.	Weight kg	Width mm	Height mm	Depth mm
961350PT	3.1	240	120	150

2 m cable included



Comparison of the Speed Increase

Series	Tool Type	Free Speed (rpm)		Increase in %
		26 V Battery	48 V Power Module	
Pistol grip design	17BPYSB05Q	1639	2428	48 %
	17BPYSB07Q	1161	1721	48 %
	17BPYSB09Q	887	1314	48 %
	17BPYSB13Q	629	931	48 %
Right angle design	47BAYSB15AM3	538	983	83 %
	47BAYPB15AM3L	538	983	83 %
	47BAYSB21AM3	411	751	83 %
	47BAYPB21AM3L	411	751	83 %
	47BAYSB28AM3	291	532	83 %
	47BAYPB28AM3L	291	532	83 %
	47BAYSB35AM3	244	447	83 %
	47BAYPB35AM3L	244	447	83 %
	47BAYSB50AM3	168	293	75 %
	47BAYPB50AM3L	168	293	75 %
47BAYSB70AH4	123	216	75 %	

mPro400GC Nutrunner Controller

- Up to 16 tools per controller (LiveWire + corded + inline floating spindle nutrunners)
- 10.4" display with extra wide viewing angle
- Touchscreen with screen keypad
- Compatible with corded and cordless tools
- Redundant Ethernet and fieldbus connections
- Serial and USB interfaces
- 8 configurable I/O 24 V
- Separate system bus
- Fieldbus module optional

mPro400GC nomenclature



Nutrunner Controller

Order No.*	Description	Weight	Width	Height	Depth*
		kg	mm	mm	mm
MPRO400GC-M	Master controller, touchscreen display, no servo module, fieldbus modules optional	10.6	267	381	336
MPRO400GC-P	Primary controller, touchscreen display, integrated servo module for corded hand-held nutrunners, fieldbus optional	14	267	381	336

*Including mounting plate



The LiveWire battery tools can also be used on the nutrunner controllers mPro400S/ mPro400SE/ mPro400SG/ CPM3/ CPM6/ CPM9 and on other DGD/ Cleco controllers. Ask us - we will offer you the best possible, most effective solutions for your fastening processes.

Batteries

Order No.	Description	Weight kg
935377	26 V Li-ion	0.50
936400PT	44 V Li-ion	0.85



Battery Chargers

Order No.	Description
935391	26 V battery charger
936491PT	26 V/44 V batt. charger



Vmax Power Module

Order No.	Weight	Width	Length	Depth
	kg	mm	mm	mm
961350PT	3.1	240	120	150

2m power cable incl.

LiveWire 2 Scanner

Order No.	Description
937240PT	Barcode scanner for "L" tools



Vmax Cables

Order No.	
Tool Cable	Extension
961341-***	961342-***
961369-060	--

***Length: 030=3 m,060=6 m,
080=8 m,100=10 m
Maximum 20 m total length



Upgrade Kit 2.4 GHz to 5 GHz

Upgrade kits from 2.4 GHz to 5GHz allow you to upgrade older tools. Ask one of our sales and service centres for a suitable solution.

LiveWire WLAN Access Points

Order No.	Description
961390	XBEE 802.15.4 base station
961300	868 MHz base station (only for EU)
544249PT	WLAN dual-band access point 2.4/5 GHz (US) incl. antennas
961453PT	WLAN dual-band access point 2.4/5 GHz (EU) incl. antennas

WLAN range: 30-50 m, XBEE 30 m max.
IEEE 802.11a/b/g/h/n (depending on tool)
Max. 16 tools per WLAN access point



Diagnostics Device for 44 V Batteries

Order No.	Description
936492PT	Battery diagnostic device incl. software CD

- USB interface to the PC
- Indication for discharge cycles, total voltage and voltage per cell
- Ideal for battery monitoring
- Simplified troubleshooting

Battery service interface enables charge cycles and cell voltages to be read via USB



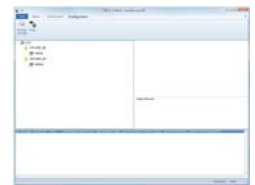
Compact Flash Cards Suitable for mPro400GC / SG Controllers

Order No.	Description
S961592	Compact Flash card 1GB (blank)
S961593	Compact Flash card 2GB (blank)



Software

Order No.	Description
S168677	mProRemote.Net software for remote programming and control of all mPro systems



Tool Holders

Order No.	Description
935144	Tool holder for pistol grip tools incl. IrDA
935396	Tool holder for pistol grip tools
935290	Tool holder for right angle tools up to 50 Nm incl. IrDA
935395	Tool holder for right angle tools up to 50 Nm
935170	Infrared interface with cable
935998	Tool holder for right angle tools from 70 Nm
935999	Tool holder for right angle tools from 70 Nm incl. IrDA



Serial Extension Cables for Tool Holder

Order No.	Description
935154	3 m extension cable for tool holder IrDA
935155	6 m extension cable for tool holder IrDA
935157	10 m extension cable for tool holder IrDA

Accessories for Cordless LiveWire Fastening Technology

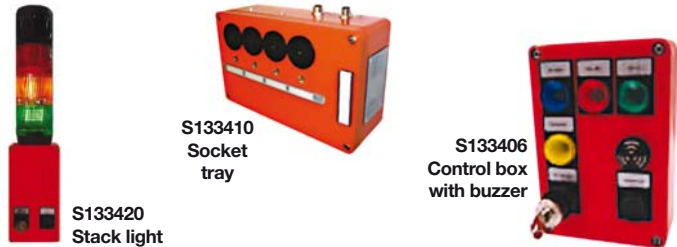
Fieldbus Modules

Order No.	Module Description
544171PT	Fieldbus Devicenet
544172PT	Fieldbus Ethernet-IP 1 x RJ45
544278PT	Fieldbus Ethernet-IP 2 x M12
544173PT	Fieldbus Profibus DB9
544174PT	Fieldbus Profinet 2 x RJ45
544211PT	Fieldbus Modbus/TCP 1 x RJ45



System Bus Accessories

Order No.	Description
S133405	System bus stack lamp without buzzer
S133406	System bus control box with buzzer
S133410	System bus 4-position socket tray
S133411	System bus 8-position socket tray
S133420	System bus stack lamp with buzzer
S133436	System bus 32 I/O expansion with housing
S133437	System bus 16 I/O expansion with housing
S961830	System bus 16 I/O expansion (built-in module for control cabinets)
960392	System bus 32 I/O expansion (built-in module for control cabinets)



LiveWire Additional Grip

Order No.	Description
301837	Additional handle for pistol grip tools



Tool Suspension Bails

Order No.	Description
1110909	Standard tool suspension bail (not for LiveWire 2 L Series)
S387983	Rotating suspension bail for right angle nutrunner (not for LiveWire 2 L Series)
S387884	Rotating suspension bail with bracket for right angle nutrunner (not for LiveWire 2 L Series)



Protective Tool Covers

Order No.	Description
936372	Protective covers for right angle tool 47BA..15-28AM3 Also suitable for LiveWire 2 tools.
936373	Protective covers for right angle tool 47BA..35-50AM3 Also suitable for LiveWire 2 tools.
936424PT	Protective covers for scanner on 47BA tools Not suitable for LiveWire 2 tools.
937210PT	Protective covers for display on 47BA tools Not suitable for LiveWire 2 tools.
936489PT	Protective covers for pistol grip tools 17BP..



Accessory Cables

Order No.	Description
960225	Ethernet patch cable - 2 m
960007	Serial null module cable - 3 m
935170	Serial interface IrDA with cable - 1 m
S133408-005	System bus cable - 0.5 m
S133408-020	System bus cable - 2 m
S133408-050	System bus cable - 5 m
S133408-200	System bus cable - 20 m
S133408-500	System bus cable - 50 m
S133412	System bus terminating connector



I - W R E N C H	Model Name	Description	Torque Range	Output Drive	Length	Weight
			(Nm)	(mm)	(mm)	(kg)
	I-Wrench 15	Torque & angle wrench	1.5 - 15	9 x 12	393	0.80
	I-Wrench 30	Torque & angle wrench	3 - 30	9 x 12	393	0.86
	I-Wrench 70	Torque & angle wrench	7 - 70	9 x 12	498	0.93
	I-Wrench 100	Torque & angle wrench	10 - 100	9 x 12	498	0.93
	I-Wrench 200	Torque & angle wrench	20 - 200	14 x 18	629	1.50
	I-Wrench 300	Torque & angle wrench	30 - 300	14 x 18	779	1.86
	I-Wrench 400	Torque & angle wrench	40 - 400	14 x 18	879	2.00
	I-Wrench 600	Torque & angle wrench	60 - 600	14 x 18	1057	3.65
	I-Wrench 800	Torque & angle wrench	80 - 800	Ø 20	1330	5.10
	I-Wrench 1000	Torque & angle wrench	100 - 1000	Ø 20	1610	6.25
	I-Wrench 1200	Torque & angle wrench	120 - 1200	Ø 20	1715	7.00



N O M E N C L A T U R E	Product Number	Description
		No Barcode Scanner, with Rubber Protection, with WLAN Module, with Tool Detection
	PRW-0015-0110-WI	Cleco LiveWire I-Wrench 15
	PRW-0030-0110-WI	Cleco LiveWire I-Wrench 30
	PRW-0070-0110-WI	Cleco LiveWire I-Wrench 70
	PRW-0100-0110-WI	Cleco LiveWire I-Wrench 100
	PRW-0200-0110-WI	Cleco LiveWire I-Wrench 200
	PRW-0300-0110-WI	Cleco LiveWire I-Wrench 300
	PRW-0400-0110-WI	Cleco LiveWire I-Wrench 400
	PRW-0600-0110-WI	Cleco LiveWire I-Wrench 600
	PRW-0800-0110-WI	Cleco LiveWire I-Wrench 800
	PRW-1000-0110-WI	Cleco LiveWire I-Wrench 1000
	PRW-1200-0110-WI	Cleco LiveWire I-Wrench 1200
	With Barcode Scanner, with Rubber Protection, with WLAN Module, with Tool Detection	
	PRW-0015-1110-WI	Cleco LiveWire I-Wrench 15
	PRW-0030-1110-WI	Cleco LiveWire I-Wrench 30
	PRW-0070-1110-WI	Cleco LiveWire I-Wrench 70
	PRW-0100-1110-WI	Cleco LiveWire I-Wrench 100
	PRW-0200-1110-WI	Cleco LiveWire I-Wrench 200
	PRW-0300-1110-WI	Cleco LiveWire I-Wrench 300
	PRW-0400-1110-WI	Cleco LiveWire I-Wrench 400
	PRW-0600-1110-WI	Cleco LiveWire I-Wrench 600
	PRW-0800-1110-WI	Cleco LiveWire I-Wrench 800
	PRW-1000-1110-WI	Cleco LiveWire I-Wrench 1000
	PRW-1200-1110-WI	Cleco LiveWire I-Wrench 1200



Explanation of Nomenclature

P R W

I-Wrench for production

0 0 1 5

0015-1200 - I-Wrench torque

0 1 1 0

0110 - No barcode scanner, with rubber protection

1110 - With barcode scanner, with rubber protection

W I

WI - with WLAN module

Cordless. Flexible.

Your Productivity – Your Freedom

Our Cleco LiveWire I-Wrench is a really universal production tool for meeting your flexible manufacturing needs. It is the perfect tool for fastening operations on your components. It is also suitable for your production line, as it enables you to use various fastening strategies with torque/angle. The patented angle measurement system, the colour touchscreen and the high memory capacity of 1 GB make the Cleco LiveWire I-Wrench the most flexible and versatile torque/angle wrench on the market.



Torque correction factor /
angle for special tools



Production

- WLAN 2.4 and 5 GHz.
- Client or stand-alone.
- Torque tightening with angle monitoring.
- Angle tightening with torque monitoring.
- Wireless data and curve transfer to the Global Controller.

User-Friendly.

Precision

- ± 0.5% display error at 20% - 100% nominal torque
- ± 1% display error at 10% - 20% nominal torque
- ± 0.5° display error on the angle



Navigation

Menu prompts with colour touchscreen display or navigation buttons

- Torque & angle data
- Graphs on the controller
- Application images

Features

- 1 GB memory for
- 20000 measurements
- 20000 graphs
- 1000 parameter sets
- 9 hrs. battery operating time



Automatic tool detection

Barcode scanner

Colour touchscreen

Optical user prompts & feedback by vibration

USB interface

Rechargeable Li-ion battery

Temperature-independent angle measurement

LiveWire I-Wrench Specifications

Model Number	Model Name	Description
Accessories on the Tool		
313110030	I-Wrench-DRP	Rubber protection with screen protection
Other Accessories		
197140013	I-Wrench-PU	Programming unit with tool detection
197130020	TAW-PSS3-RP 15/30	Charging station for Cleco LiveWire I-Wrench 15/30 Nm with rubber protection
197130021	TAW-PSS3-RP 70/100	Charging station for Cleco LiveWire I-Wrench 70/100 Nm with rubber protection
197130022	TAW-PSS3-RP 200	Charging station for Cleco LiveWire I-Wrench 200 Nm with rubber protection
197130023	TAW-PSS3-RP 300	Charging station for Cleco LiveWire I-Wrench 300 Nm with rubber protection
197130024	TAW-PSS3-RP 400	Charging station for Cleco LiveWire I-Wrench 400 Nm with rubber protection
197130025	TAW-PSS3-RP 600	Charging station for Cleco LiveWire I-Wrench 600 Nm with rubber protection
197130026	TAW-PSS3-RP 800	Charging station for Cleco LiveWire I-Wrench 800 Nm with rubber protection
197130027	TAW-PSS3-RP 1000	Charging station for Cleco LiveWire I-Wrench 1000 Nm with rubber protection
197130028	TAW-PSS3-RP 1200	Charging station for Cleco LiveWire I-Wrench 1200 Nm with rubber protection
313210042	I-Wrench-BA	Li-ion battery 3.7 V
197140017	I-Wrench-EC1	External battery charger for 1 battery with J21
197140018	I-Wrench-EC2	External battery charger for 2 batteries with JS22
197990008	I-Wrench-USB	USB cable 2 m
961453PT	Access point	WLAN dual-band access point 2.4 & 5 GHz (EU) incl. antennas
961323	Access point	WLAN dual-band access point 2.4 GHz (EU)
333110016	Chip	Chip for tool detection
102110003	SQnet	SQnet FTA software for programming & downloading data (stand-alone mode)

ACCESSORIES

Further accessories available on request. Please contact our sales & service centres.

Please note: Ratchets are not included and must be ordered separately. This statement also applies to sockets that you can order from our Apex bits & sockets range.



Rubber protection with screen protection



Programming unit with tool detection



Li-ion battery 3.7 V



USB cable 2 m



PRW charging cradle



Dual-band access point



External charger 2 batteries



External charger 1 battery

R A T C H E T S	Without Tool Detection (Fully Prepared for the Installation of Tool Detection)		With Tool Detection	
	Model Number	Description	Model Number	Description
	197170001	9 x 12 - 1/4"	197179001	TR 9 x 12 - 1/4"
	197170002	9 x 12 - 3/8"	197179002	TR 9 x 12 - 3/8"
	197170003	9 x 12 - 1/2"	197179003	TR 9 x 12 - 1/2"
	197170005	14 x 18 - 1/2"	197179005	TR 14 x 18 - 1/2"
	197170006	14 x 18 - 3/4"	197179006	TR 14 x 18 - 3/4"
	197170007	Ø 20 - 3/4"		
	197170008	Ø 20 - 1"		
	197170146	Insert for customer spec. application 9 x 12		
	197120147	Insert for customer spec. application 14 x 18		



O P E N - E N D E D I N S E R T T O O L S	Product Description	Product No. Without Tool Detection	Product No. With Tool Detection
		7 mm 9X12	197 17 0024
	8 mm 9X12	197 17 0025	197 17 9025
	9 mm 9X12	197 17 0026	197 17 9026
	10 mm 9X12	197 17 0027	197 17 9027
	11 mm 9X12	197 17 0028	197 17 9028
	12 mm 9X12	197 17 0029	197 17 9029
	13 mm 9X12	197 17 0030	197 17 9030
	14 mm 9X12	197 17 0031	197 17 9031
	15 mm 9X12	197 17 0032	197 17 9032
	16 mm 9X12	197 17 0033	197 17 9033
	17 mm 9X12	197 17 0034	197 17 9034
	18 mm 9X12	197 17 0035	197 17 9035
	19 mm 9X12	197 17 0036	197 17 9036
	13 mm 14X18	197 17 0037	197 17 9037
	14 mm 14X18	197 17 0038	197 17 9038
	15 mm 14X18	197 17 0039	197 17 9039
	16 mm 14X18	197 17 0040	197 17 9040
	17 mm 14X18	197 17 0041	197 17 9041
	18 mm 14X18	197 17 0042	197 17 9042
	19 mm 14X18	197 17 0043	197 17 9043
	21 mm 14X18	197 17 0044	197 17 9044
	22 mm 14X18	197 17 0045	197 17 9045
	24 mm 14X18	197 17 0046	197 17 9046
	25 mm 14X18	197 17 0047	197 17 9047
	27 mm 14X18	197 17 0048	197 17 9048
	30 mm 14X18	197 17 0049	197 17 9049
	32 mm 14X18	197 17 0050	197 17 9050

Further open-ended and ring insert tools are available on request. Please contact our sales & service centres.

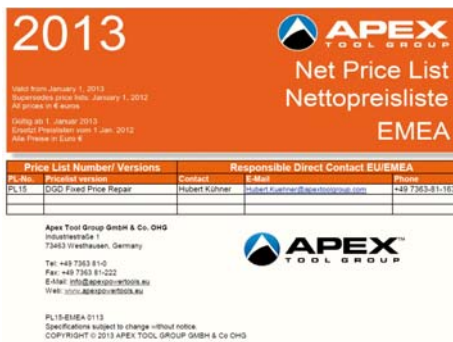
Repair. Service. Support.

Service & Support

Even the most reliable tools require maintenance and care from time to time. The Apex Tool Group is also your capable partner for service and maintenance to ensure that your productivity is retained.

Fixed Price Repair

The Apex Tool Group offers fixed price repairs in accordance with your requirements and wishes.



Repairs are undertaken by our qualified staff.



Production in your organisation with the tool in use.

Quotations for repairs without delays and loss of time.

Optimised Processes – Quick & Cost-Effective

- The Apex Tool Group service centres will take over all service and repair tasks for Apex Tool Group products.
- The Apex Tool Group service centres, representatives and subsidiaries will provide you directly with quotations and prices.
- The service processes are subject to continuous optimisation such that development, troubleshooting and return can be undertaken as quickly as possible.

Fixed Price Repair Services

- All costs known.
- No surprises due to parts or labour.
- Defined repair tasks.
- No additional administrative costs.
- No quotation processing for you.

Service Engineers

- Our service engineers have extensive training in the maintenance and repair of all Apex Tool Group products.
- Continuous further training of our team ensures our engineers have the necessary specialist knowledge and skills for future tasks.

Cost and Time Saving and No Surprises!

After Sales Service.

Genuine Spare Parts



The Apex Tool Group service centres only use genuine spare parts. As a consequence the performance and reliability of the tools again meet the high requirements on Apex Tool Group products.

Certification

Our latest nutrunner inspection systems with hybrid technology can be traced back to the standards used in a DKD laboratory, which operates in accordance with DIN EN ISO / IEC 17025, as well as a calibration certificate in accordance with VDI / VDE 2646.

After Sales Service

The Apex Tool Group service centres offer much more than just service and repairs. Our additional services as part of our after sales service:

- Training courses for applications & repairs.
- Seminars on systems & fastening technology.
- Service concepts for fastening technology.
- Preventive maintenance and customer service.
- Machine capability verification based on VDI/VDE 2647.
- Optimisation of your screw fastening processes.
- Support during the commissioning of fastening technology.
- Spare parts, spare part kits.
- Software solutions and expansions.
- Remote maintenance (online support, remote access).

Sales Centres

There are Apex Tool Group service centres all over the world to ensure there is always somebody close to you. Our strategy is to continuously optimise and expand our Apex Tool Group service centres for your future service and repair tasks.

Please contact your local sales and service centre on service issues. The after sales support services available may vary depending on the location and may be adapted to specific market requirements.

You will also find our regional dealer and sales partner network on our website www.apexpowertools.eu.



Strong Brands

With the Power Tools division, the Apex Tool Group offers a complete series of high quality industrial tools and related accessories – some of the most powerful and respected brands in the industry.

The screenshot shows the Apex Tool Group website for Europe EMEA. At the top, there is a navigation bar with links for HOME, ABOUT US, BRANDS, PRODUCTS, DOWNLOADS, SERVICE / AFTER MARKET, NEWS, and CONTACT. A search bar is located on the left. The main content area features a large banner with the headline "Solutions That Drive World Industry" and logos for Airetool, APEX, Cleco, DGD, DOTCO, and GETB. Below the banner, there are several sections: "Industrial Power Tools for Professionals" with a sub-section for "Cleco LiveWire I-Wrench for Production - Intelligent Torque Wrench", and "Brochures: Cleco 19 series pneumatic tool generation". The page also includes a "Latest News" section on the left with several articles about manuals and brochures.

All Information Available Online for Download

Manuals, technical drawings, installation instructions, product images as well as homologation information is available in the download area of our website.

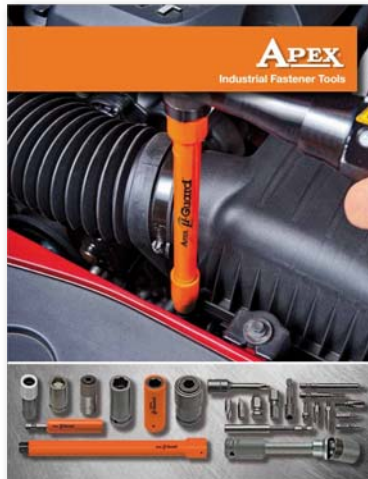
The screenshot shows the "DOWNLOADS" section of the Apex Tool Group website. It features a search bar with a "GO" button and a "Request Form" link. Below the search bar, there is a list of download results. The first result is "GI-1250 - Industrial Power Tools for Professionals", which is a PDF file (13.0 MByte) in German, dated 26.09.2013. The second result is "SP-1100 - Airetool - Tube Cleaners and Expanders...", which is a PDF file (5.4 MByte) in English UK, dated 11.04.2013. The page also includes a "Social Network Channels" section with icons for Facebook, Twitter, YouTube, LinkedIn, and Google+, and an "RSS-Newsfeed" section with icons for RSS, USA, and AT&T.





Tube cleaners and expanders, rolling motors ...

Catalogue: SP-1100



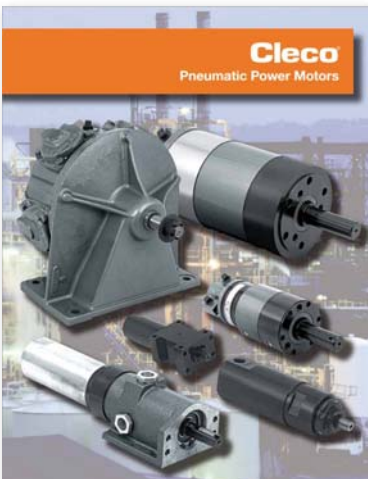
Bits, sockets and universal joints

Catalogue: TC-100



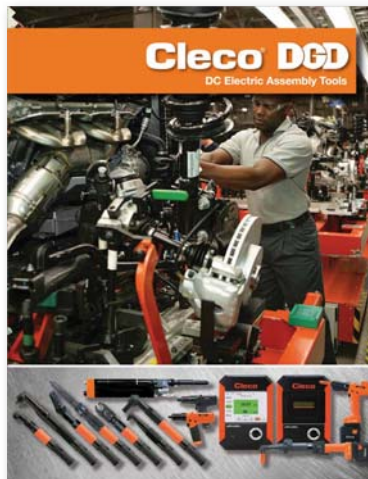
Material removal tools, drills, grinders, polishers ...

Catalogue: SP-102



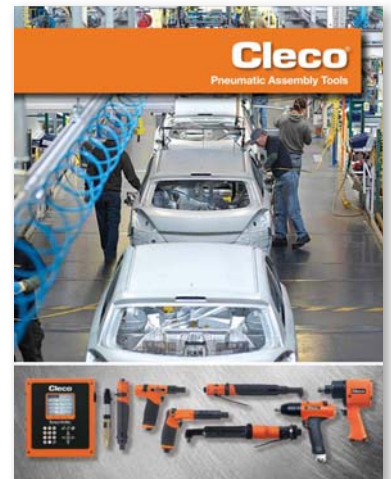
Cleco Pneumatic power motors ...

Catalogue: SP-104



Cleco and DGD DC electric assembly tools

Catalogue: SP-1020



Cleco Pneumatic assembly tools

Catalogue: SP-1000



Assembly, material removal and grinding tools

Catalogue: SP-904



Service/ after market services

www.apexpowertools.eu



Sales and Service Centres

GERMANY

Apex Tool Group GmbH & Co. OHG

Industriestrasse 1
73463 Westhausen
Germany
Tel.: +49 73 63 81 0
Fax: +49 73 63 81 222
E-mail: info@apexpowertools.eu

ENGLAND

Apex Tool Group GmbH & Co. OHG

C/O Spline Gauges
Piccadilly, Tamworth,
Staffordshire B78 2ER
United Kingdom
Tel.: +44 1827 8741 28
Fax: +44 1827 8741 28

HUNGARY

Apex Tool Group Hungaria Kft.

Platánfa u. 2
9027 Győr
Hungary
Tel.: +36 96 66 1383
Fax: +36 96 66 1135

FRANCE

Apex Tool Group SNC

25 rue Maurice Chevalier
B. P. 28
77831 Ozoir-la-Ferrière Cedex
France
Tel.: +33 1 64 43 22 00
Fax: +33 1 64 43 17 17

ITALY

Apex Tool S.r.l.

Viale Europa No. 80
20090 CUSAGO
Italy
Tel.: +39 2903 3102 14
Fax: +39 2903 9423 1

You will find local dealers and other sales contacts at
www.apexpowertools.eu



RSS News Feeds



Stay in touch with us via social media.



Apex Tool Group GmbH & Co. OHG

Industriestrasse 1
73463 Westhausen
Germany

Tel.: +49 73 63 81 0
Fax: +49 73 63 81 222
E-mail: info@apexpowertools.eu
Website: www.apexpowertools.eu



APEX

TOOL GROUP