

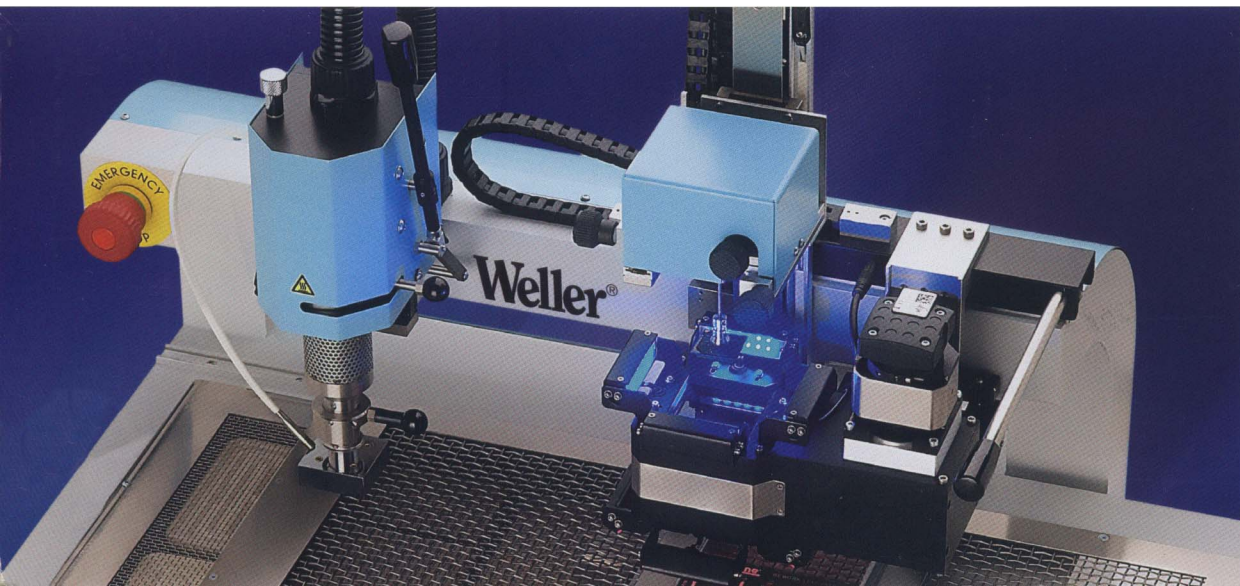


Weller[®]

WQB 4000SOPS – The next generation

For unmatched precision
& functionality

COOPER Hand Tools

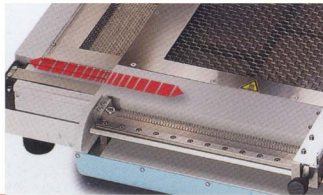


Maximum precision. Maximum flexibility. Maximum user-friendliness.

Weller's next-generation repair and rework station combines a completely new design with state-of-the-art split optic camera technology to provide users with absolute reliability, optimum process control and enhanced ease of use.

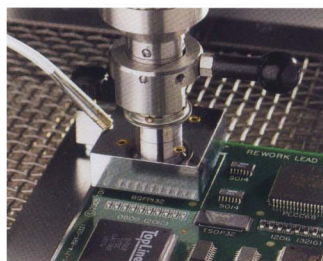
The system was engineered to bring together a finely tuned balance of automated technology for component pick-up and positioning with a semi-automated rework cycle – opening up new possibilities and applications in repair and rework.

Well considered detail, high-precision results and an outstanding price-performance ratio promise to make this new system from Weller the first choice among discerning users.



Advanced design for enhanced precision

The WQB 4000SOPS is modularly built with a slide platform, advanced patented systems and materials of the highest quality to guarantee industrial reliability and long-lasting durability.



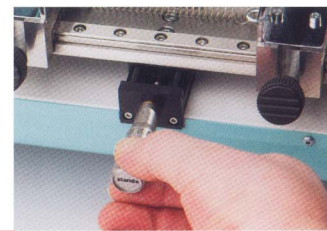
Heating from above: selective and sensitive

The hot gas heater with patented nozzle system, coupled with digital control electronics for temperature monitoring and regulation of the air flow rate, facilitates the finely metered supply of heat to the components. A temperature sensor placed directly in the hot gas nozzle prevents thermal overload of the component and efficiently regulates the top heater, providing maximum process control.



Heating from below: rapid and homogeneous

The temperature-regulated two-zone infrared bottom heater provides rapid, yet precisely controlled warm-up at homogeneous substrate temperatures.

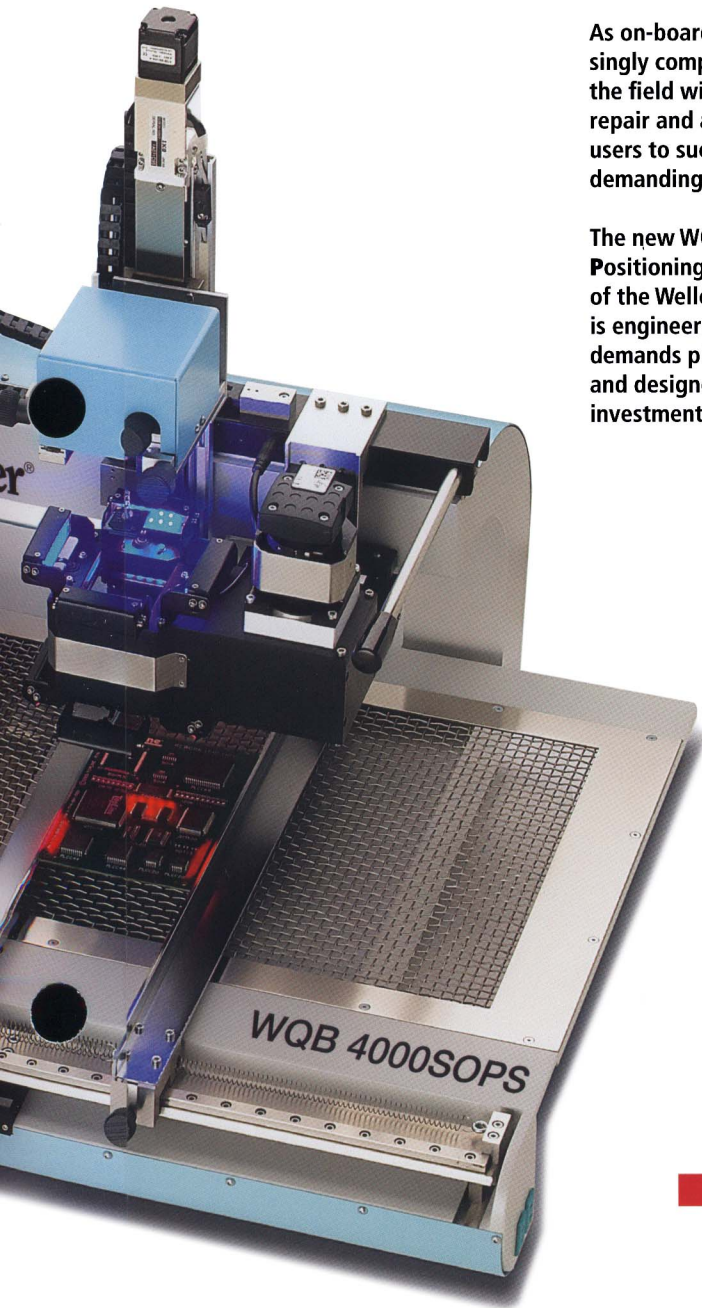


Optimized ease of use

Everything about the new WQB 4000SOPS has been engineered and designed for ease of use and superb results – from its advanced, user-friendly software all the way through to its many supportive details, such as the SoftStart feature.



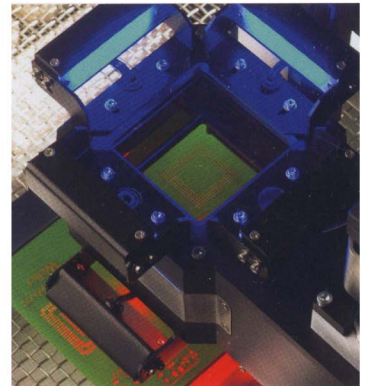
Opening up new possibilities in repair and rework



As on-board components become increasingly complex, Weller continues to lead the field with innovative, user-friendly repair and assembly tools that enable users to successfully take on increasingly demanding rework challenges.

The new WQB 4000SOPS (Split Optic Positioning System), the third generation of the Weller BGA/SMT repair system, is engineered to meet the exceptional demands placed on modern rework tools and designed to deliver real value for your investment.

It is a comprehensive, user-friendly system for the removal and soldering of BGA components, without the risk of thermal damage to the component or circuit board.



Split Optics for perfectly accurate positioning

The new SOPS (Split Optic Positioning System) with the high-resolution 2 Mpix CMOS USB 2.0 camera enables accurate positioning of the components following desoldering. It works with a single camera and two-color lighting for exact positioning. Superb image quality at high dynamics and very low image noise ensure precise, ergonomic component mounting.



An ever expanding field of applications

The new WQB 4000SOPS is optimally equipped to take on repair and rework in mobile communications, research and general BGA/QFP work. Specifically, with PBGA, CBGA, CCGA, CSP's, Micro BGA, QFN, PLCC, SOP and PGA components.

1. Components without direct access to the solder joint
2. Leaded components with external solder joints
3. A wide variety of special modules