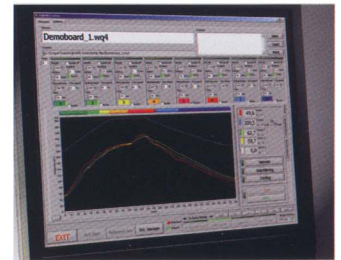


### **Streamlined technology**

The new WQB 4000SOPS enables users to work with a standard PC via a USB 2.0 port. Additional appliances or interface cards are not required.



### **Monitoring software: comprehensive functions**

The monitoring software determines temperature profiles and facilitates definition of the optimal soldering process.

### **Teach-in feature: fast, effective parameter identification**

Repeatable results can only be achieved by a process cycle that considers all the parameters of the repair operation. The 'Teach-in' feature provides a quick and easy method of determining process cycle parameters and identifying critical points – without the need for in-depth operator knowledge.

The software includes a library of soldering profiles, i.e. general and specific parameters enabling repeatable use. New profiles can be edited easily by the user and added to the library.



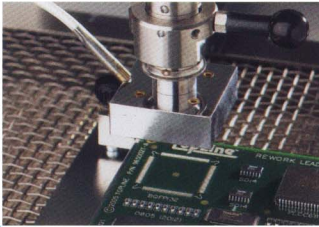
### **Perfect component /circuit board alignment**

With the split optic camera, live images of a component and a circuit board can be aligned independently of each other using the x, y and theta axis fine adjustment drives.

1. Component size & theta axis
2. Align y axis
3. Align x axis
4. Component aligned!

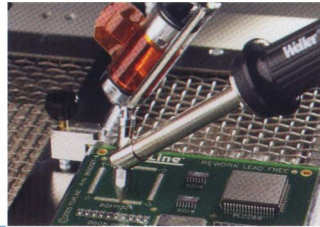
# WQB 4000SOPS

## rework cycle



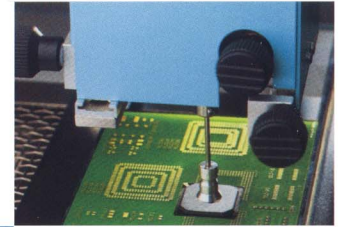
### 1 Removal (desoldering) of the defective component

The ability to preheat the circuit board and a temperature/time controlled process are critical for good reflow of the solder joints. At the end of the reflow cycle, to avoid damage to the solder pads, a vacuum lift automatically removes the component from the board with minimum force and exact temperature control.



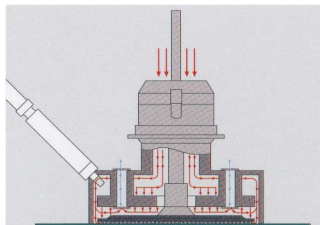
### 2 Cleaning of the circuit board

Residual solder should be removed from the board with a desoldering iron or desolder wick. Residual contaminants can be removed with a suitable solvent spray.



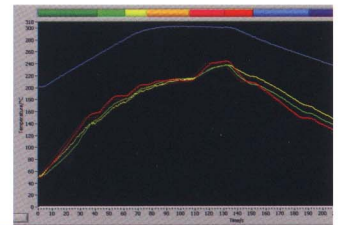
### 3 Positioning of the new component

The new WQB 4000SOPS station's split optic camera placement system ensures precise positioning of a wide range of components – from BGA to fine pitch SMT.



### 4 Component soldering

Reflow of the replaced component is essentially a repeat of the removal process, without the vacuum lift being initiated at the end of the profile. An extensive range of hot gas nozzles and adapters are available to cater for the many body sizes of BGA devices or QFP and PLCC packages.



### 5 Temperature profiling

An eight-step temperature profile enables soldering and cooling that are perfectly tailored to specific requirements.

To complete your program you can find details of our wide range of WQB accessories including reflow nozzles, temperature sensors and working appliances in our price list and on the Weller web site: [www.weller.eu](http://www.weller.eu).

#### Technical data:

Dimensions (L x W x H):	approx. 630 x 630 x 650 mm
Dynamic dimensions:	approx. 1030 x 630 x 650 mm
Power supply voltage:	230 V, 50/60 Hz
Mains fuse:	T10 A
Power:	2300 W
Top heater:	700 W
Bottom heater:	large 1600 W (260 x 260) mm small 400 W (120 x 120) mm
Compressed-air supply:	400 – 600 kPa purified, dry compressed air
Compressed-air converter:	vacuum 60 kPa
Temperature control:	infinitely variable 50°C – 400°C control precision ± 10°C
Flow control:	infinitely variable 5 – 50 l/min.
Air consumption:	60 – 100 l/min. (4 bar)
Total weight:	approx. 40 kg

GERMANY

**Cooper Tools GmbH**

Carl-Benz-Straße 2  
74354 Besigheim  
Tel: (07143) 580-0  
Fax: (07143) 580-108

GREAT BRITAIN

**Cooper Tools**

A Division of Cooper (GB) Ltd.  
4<sup>th</sup> Floor Pennine House  
Washington, Tyne & Wear  
NE37 1LY  
Tel: (0191) 419 7700  
Fax: (0191) 417 9421

FRANCE

**Cooper Tools S.A.S.**

25 Rue Maurice Chevalier BP 46  
77832 Ozoir-la-Ferrière Cedex  
Tel: (01) 60.18.55.40  
Fax: (01) 64.40.33.05

ITALY

**Cooper Italia S.r.l.**

Viale Europa 80  
20090 Cusago (MI)  
Tel: (02) 9033101  
Fax: (02) 90394231

SWITZERLAND

**Erem S.A.**

Rue de la Roselière 8  
1400 Yverdon-les-Bains  
Tel: (024) 426 12 06  
Fax: (024) 425 09 77

USA

**Cooper Hand Tools  
World Headquarters**

1000 Lufkin Road  
Apex, NC 27539 USA  
Tel: (919) 387 0099  
Fax: (919) 387 2614

CANADA

**Cooper Hand Tools – Canada**

164 Innisfil Street  
Barrie, Ontario  
Canada L4N 3E7  
Tel: (705) 728 5564  
Fax: (800) 403 8665

CHINA

**Cooper Hand Tools**

18<sup>th</sup> Floor, Yu An Building  
738 Dongfang Road  
Pudong, Shanghai  
200122 China  
Tel: (21) 5111 8300  
Fax: (21) 5111 8446

AUSTRALIA

**Cooper Tools Pty. Limited**

P.O. Box 366  
519 Nurigong Street  
Albury, N.S.W. 2640  
Australia  
Tel: (2) 6058-0300  
Fax: (2) 6021-7403

[www.cooperhandtools.com/europe](http://www.cooperhandtools.com/europe)  
[www.weller.eu](http://www.weller.eu)