



HiKu

HIGH POWER POLY PERC MODULE

405 W ~ 430 W

CS3W-405 | 410 | 415 | 420 | 425 | 430P

MORE POWER



24 % higher power than conventional modules



Up to 4.5 % lower LCOE
Up to 2.7 % lower system cost



Low NMOT: $41 \pm 3 \text{ }^\circ\text{C}$
Low temperature coefficient (Pmax):
 $-0.36 \text{ } \% / \text{ }^\circ\text{C}$



Better shading tolerance

MORE RELIABLE



Lower internal current,
lower hot spot temperature



Minimizes micro-crack impacts



Heavy snow load up to 5400 Pa,
wind load up to 3600 Pa*

12
Years

Enhanced Product Warranty on Materials and Workmanship*

25
Years

Linear Power Performance Warranty*

**1st year power degradation no more than 2%
Subsequent annual power degradation no more than 0.55%**

*According to the applicable Canadian Solar Limited Warranty Statement.

MANAGEMENT SYSTEM CERTIFICATES*

ISO 9001:2015 / Quality management system
ISO 14001:2015 / Standards for environmental management system
ISO 45001: 2018 / International standards for occupational health & safety

PRODUCT CERTIFICATES*

IEC 61215 / IEC 61730 / CE / MCS / INMETRO / UKCA
CEC listed (US California) / FSEC (US Florida)
UL 61730 / IEC 61701 / IEC 62716
UNI 9177 Reaction to Fire: Class 1 / Take-e-way



* The specific certificates applicable to different module types and markets will vary, and therefore not all of the certifications listed herein will simultaneously apply to the products you order or use. Please contact your local Canadian Solar sales representative to confirm the specific certificates available for your product and applicable in the regions in which the products will be used.

CSI Solar Co., Ltd. is committed to providing high quality solar photovoltaic modules, solar energy and battery storage solutions to customers. The company was recognized as the No. 1 module supplier for quality and performance/price ratio in the IHS Module Customer Insight Survey. Over the past 20 years, it has successfully delivered over 70 GW of premium-quality solar modules across the world.

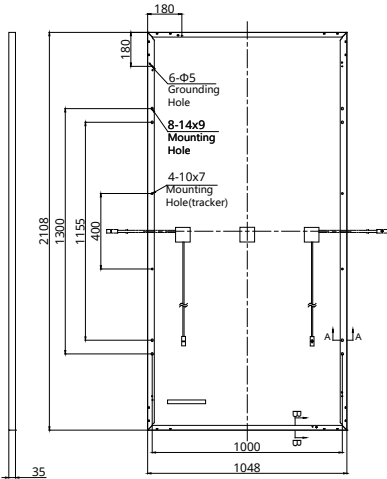
* For detailed information, please refer to Installation Manual.

CSI Solar Co., Ltd.

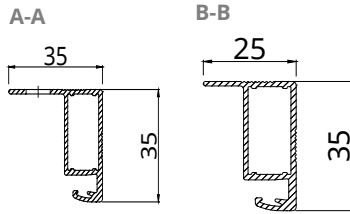
199 Lushan Road, SND, Suzhou, Jiangsu, China, 215129, www.csisolar.com, support@csisolar.com

ENGINEERING DRAWING (mm)

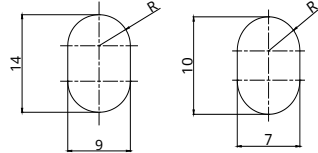
Rear View



Frame Cross Section



Mounting Hole



Length: ±2mm Width: ±2mm
Height: ±1mm Row Pitch: ±2mm

ELECTRICAL DATA | STC*

CS3W	405P	410P	415P	420P	425P	430P
Nominal Max. Power (Pmax)	405 W	410 W	415 W	420 W	425 W	430 W
Opt. Operating Voltage (Vmp)	38.9 V	39.1 V	39.3 V	39.5 V	39.7 V	39.9 V
Opt. Operating Current (Imp)	10.42 A	10.49 A	10.56 A	10.64 A	10.71 A	10.78 A
Open Circuit Voltage (Voc)	47.4 V	47.6 V	47.8 V	48.0 V	48.2 V	48.4 V
Short Circuit Current (Isc)	10.98 A	11.06 A	11.14 A	11.26 A	11.29 A	11.32 A
Module Efficiency	18.3%	18.6%	18.8%	19.0%	19.2%	19.5%
Operating Temperature	-40°C ~ +85°C					
Max. System Voltage	1500V (IEC/UL) or 1000V (IEC/UL)					
Module Fire Performance	TYPE 1 (UL 61730 1500V) or TYPE 2 (UL 61730 1000V) or CLASS C (IEC 61730)					
Max. Series Fuse Rating	20 A					
Application Classification	Class A					
Power Tolerance	0 ~ + 10 W					

* Under Standard Test Conditions (STC) of irradiance of 1000 W/m², spectrum AM 1.5 and cell temperature of 25°C.

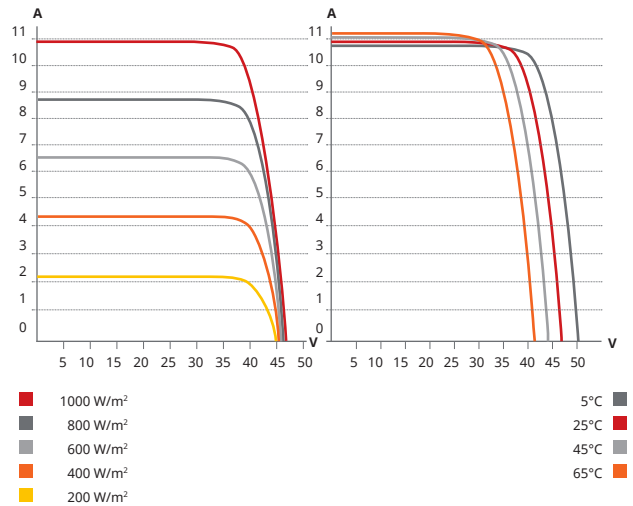
ELECTRICAL DATA | NMOT*

CS3W	405P	410P	415P	420P	425P	430P
Nominal Max. Power (Pmax)	303 W	307 W	310 W	314 W	318 W	321 W
Opt. Operating Voltage (Vmp)	36.3 V	36.5 V	36.7 V	36.9 V	37.1 V	37.3 V
Opt. Operating Current (Imp)	8.33 A	8.39 A	8.45 A	8.51 A	8.57 A	8.62 A
Open Circuit Voltage (Voc)	44.7 V	44.8 V	45.0 V	45.2 V	45.4 V	45.6 V
Short Circuit Current (Isc)	8.85 A	8.92 A	8.98 A	9.08 A	9.10 A	9.13 A

* Under Nominal Module Operating Temperature (NMOT), irradiance of 800 W/m², spectrum AM 1.5, ambient temperature 20°C, wind speed 1 m/s.

* The specifications and key features contained in this datasheet may deviate slightly from our actual products due to the on-going innovation and product enhancement. CSI Solar Co., Ltd. reserves the right to make necessary adjustment to the information described herein at any time without further notice. Please be kindly advised that PV modules should be handled and installed by qualified people who have professional skills and please carefully read the safety and installation instructions before using our PV modules.

CS3W-400P / I-V CURVES



MECHANICAL DATA

Specification	Data
Cell Type	Poly-crystalline
Cell Arrangement	144 [2 X (12 X 6)]
Dimensions	2108 X 1048 X 35 mm (83.0 X 41.3 X 1.38 in)
Weight	24.3 kg (53.6 lbs)
Front Cover	3.2 mm tempered glass with anti-reflective coating
Frame	Anodized aluminium alloy
J-Box	IP68, 3 bypass diodes
Cable	4 mm ² (IEC), 12 AWG (UL)
Cable Length	500 mm (19.7 in) (+) / 350 mm (13.8 in) (-) or customized length*
Connector	T6 or T4 series or MC4-EVO2
Per Pallet	30 pieces
Per Container (40' HQ)	660 pieces

* For detailed information, please contact your local Canadian Solar sales and technical representatives.

TEMPERATURE CHARACTERISTICS

Specification	Data
Temperature Coefficient (Pmax)	-0.36 % / °C
Temperature Coefficient (Voc)	-0.28 % / °C
Temperature Coefficient (Isc)	0.05 % / °C
Nominal Module Operating Temperature	41 ± 3°C

PARTNER SECTION



CSI Solar Co., Ltd.

199 Lushan Road, SND, Suzhou, Jiangsu, China, 215129, www.csisolar.com, support@csisolar.com