

**HARDWARE & INDUSTRY  
PRODUCT SERIES CATALOGUE**  
工业塑料产品系列



• **TOGETHER, WE CLEAN BETTER** •

# ABOUT US



Established in 1987, **RAYACO®** has become one of the leading household brand name in Malaysia. In addition, we also have VIP, VIP MEDPRO and RAYACO PRO brands. As a pioneer in the broom and brush, and household product supply industry in the country, we have come through changes and challenges, from the technology and exposure we acquired over the past three decades, to successfully establish ourselves as one of the leading names in the household products industry providing full range of cleaning products for household and industry needs under various brands name. Our range of products includes broom, brush, mop scouring pad with sponge, scouring pad, household sponge, household plastic product etc.

To pursue continuous advancement, at the year 2002, we expanded and moved into a modern factory in Rawang Integrated Park with total build up area of 210,000 square feet and equipped with new facilities and equipment to meet the increasing market demand as well as further strengthen our position in the household supplies industry. In 2016, to meet the increasing demand of the market for the foreseeable future, we acquired 2 pieces of land and factory, which almost double up our total build up area to 400,000 square feet. In addition, our newly build warehouse expected to be ready at the end of year 2019, this expanded production and warehousing capability will aid our growth strongly and organically at least for the next 5 years.

We believe in a clean and healthy environment for household as well as industrial premises, therefore, **RAYACO®** brand and our other brand of cleaning products ensures value for money purchase as well as comfort usage. Thus we come up with our own motto:

**"TOGETHER, WE CLEAN BETTER"**

To continue our excellent in cleaning industry and to tap and expand our expertise in plastic and metal technology, we are transforming ourselves into providing a full range of household product supplier.

We are committed to produce excellent quality, user friendly and reliable household products. Our innovation on product design and continuous improvement on product quality has guaranteed many satisfactions of our customers.

We are one of the few manufacturers who can supply full range of above products to our distributors as well as retailers which carry our own brand name. We also provide OEM services as well which include some worldwide brand name.

We believe that through our innovation in product design and continuous improvement of product quality, we have ensured a lot of customer satisfaction. Currently, we are supplying to 18 countries worldwide, include Middel east, Southeast Asia, Africa, East Asia, as well as Northern America.

We sincerely hope that we can be your partners and be part of your supply chain provider. Do send us enquiry and we will try our best to fulfil your needs. As our motto speaks:

**"TOGETHER, WE CLEAN BETTER"** And we believe together, we will be better!


Looking forward your journey with us in the near term.

*New Office & Warehouse*

*Nationwide Logistic Team*




**CEMENT BUCKET (M) 灰桶 (中)**

Model Code	8250
Barcode	9555221304303
Packing	144 pcs / carton
Size (cm)	26.5 (∅) x 18 (H)
Color	




**CEMENT BUCKET (L) 灰桶 (大)**

Model Code	8260
Barcode	9555221305928
Packing	120 pcs / carton
Size (cm)	29 (∅) x 18 (H)
Color	



**CEMENT BUCKET (XL) 灰桶 (特大)**

Model Code	8270
Barcode	9555221305935
Packing	72 pcs / carton
Size (cm)	32 (∅) x 19.5 (H)
Color	



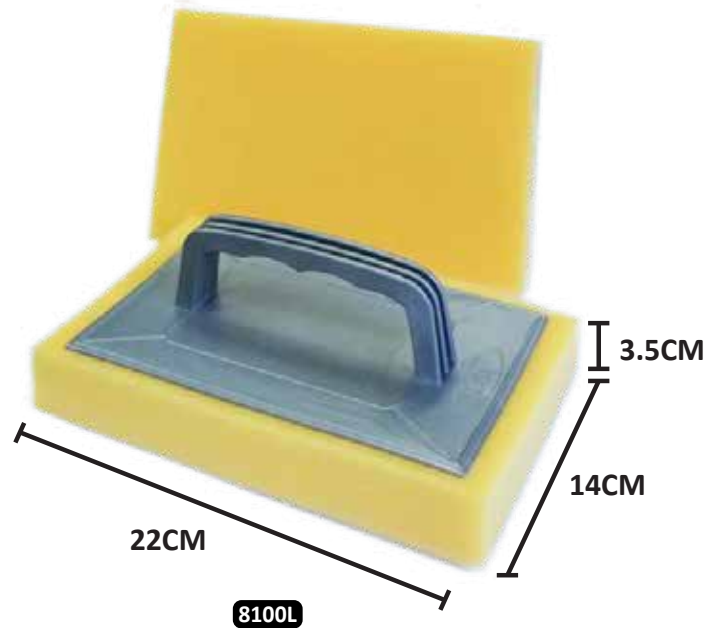
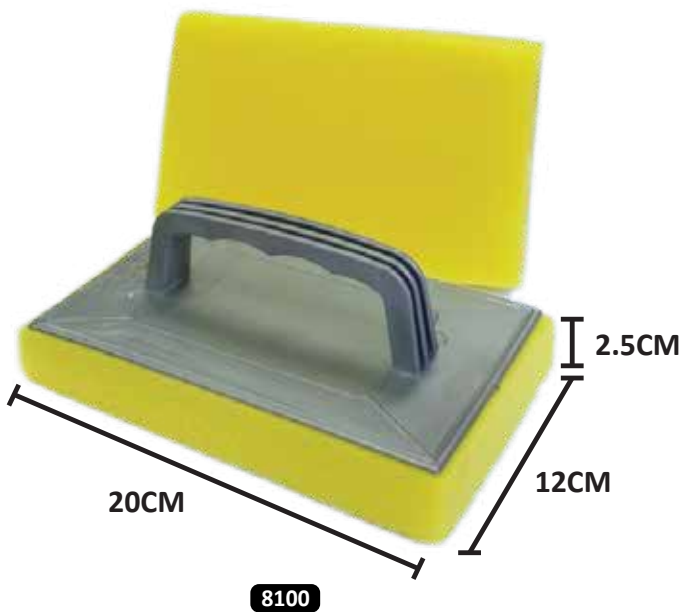
**PAINT TRAY 油漆托盘**

Model Code	8017
Barcode	9555221304341
Packing	150 pcs / carton
Size (cm)	33 (L) x 24 (W) x 6.5 (H)



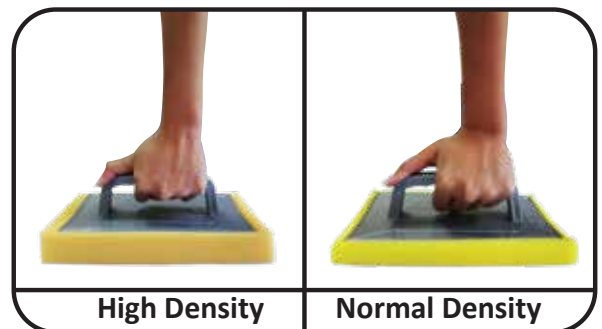
**HIGH DENSITY & NORMAL DENSITY SPONGE SCRUB**

- Gently scrub on cemented wall, for smooth cement wall finishing.  
可用在打滑洋灰墙壁
- For cleaning mosaic floor or mosaic wall, remove dirt and dust easily  
可用于洗刷镶嵌地板或镶嵌墙壁
- For car cleaning and polishing with wax  
可用于洗车，打蜡拖光



NORMAL DENSITY SPONGE SCRUB 多用途绵擦	
Model Code	8100
Barcode	9555221304716
Size	2.5cm (H) x 20cm (W) x 12cm (D)
Packing	48 pcs / pkt ; 288 pcs / carton

HIGH DENSITY SPONGE SCRUB 多用途绵擦	
Model Code	8100L
Barcode	9555221312056
Size	3.5cm (H) x 22cm (W) x 14cm (D)
Packing	48 pcs / pkt ; 288 pcs / carton



Comparison of flexibility between low density and high density melamine sponges.



**CEMENT TRAY (PP) 灰托盘**

Model Code	8202 - B
Barcode	9555221304464
Packing	36 pcs / pkt; 216 pcs / carton



**CURVY CEMENT TRAY (PP) 灰托盘 (加硬)**

Model Code	8203 - B
Barcode	9555221304891
Packing	24 pcs / pkt; 144 pcs / carton



**SPRAYER 1000 ML**

Model Code	R855
Barcode	955553408557
Size (cm)	10 (ø) x 24 (H)
Packing	12 pcs / bag; 144pcs / carton
Color	●●●



**SPRAYER 500 CC**

Model Code	R850
Barcode	9555221312162
Size (cm)	10 (ø) x 20 (H)
Packing	12 pcs / bag; 144pcs / carton
Color	●●●

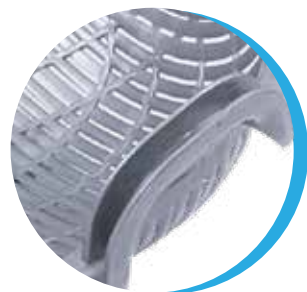
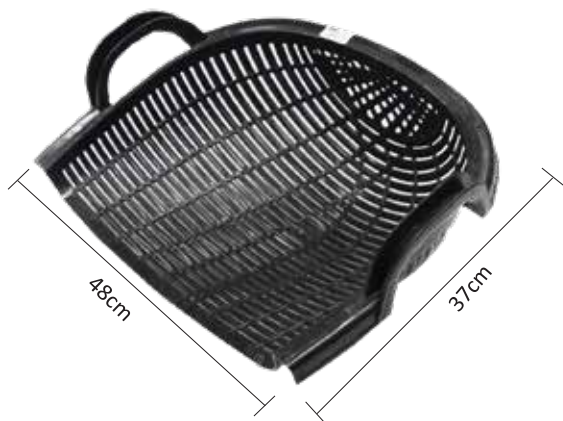


**HEAVY DUTY PLASTIC SCOOP (S) W HANDLE**  
塑料重型沙石畚箕 (小)

Model Code	8418B
Barcode	9555221306062
Packing	48 pcs / carton
Colors	

**HEAVY DUTY PLASTIC SCOOP (L) W HANDLE**  
塑料重型沙石畚箕 (大)

Model Code	8419B
Barcode	9555221306079
Packing	48 pcs / carton
Colors	



**HEAVY DUTY PLASTIC SCOOP (S)**  
塑料重型沙石畚箕 (小)

Model Code	8418A
Barcode	9555221306725
Packing	48 pcs / carton
Colors	

**HEAVY DUTY PLASTIC SCOOP (L)**  
塑料重型沙石畚箕 (大)

Model Code	8419A
Barcode	9555221306772
Packing	48 pcs / carton
Colors	



**HEAVY DUTY DRAIN COVER**



Special interlocking design for stability.

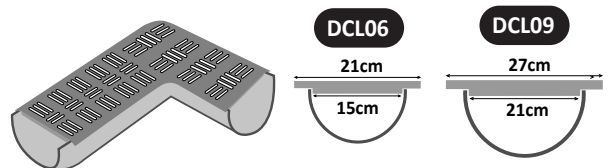
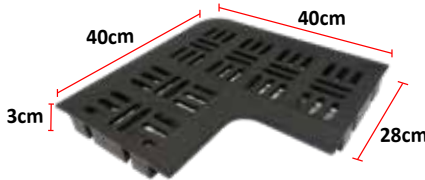
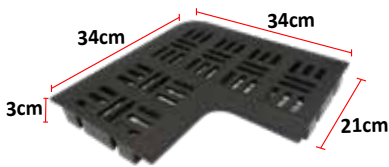
**DCL06**

**DCL09**



Maximum static load

Size:



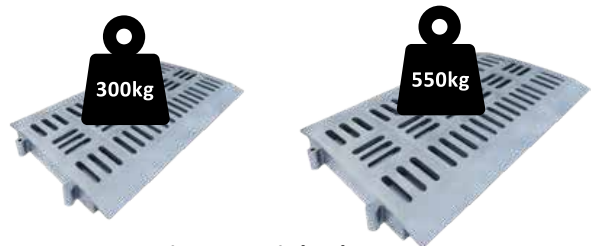
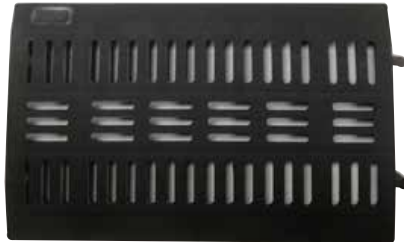
HEAVY DUTY L SHAPE DRAIN COVER 沟渠盖		
	SMALL	LARGE
Model Code	DCL06	DCL09
Barcode	9555221311820	9555221311837
Packing	12pcs / bag; 144pcs / carton	6pcs / carton
Size (cm)	8.5" x 13.5"	11" x 15.5"
Load Bearing	300kg	550kg
Color	■	■



- Suitable to uses at houses, warehouse, gardens, factory side and etc.
- Built tough, easy to install and can be recycled.

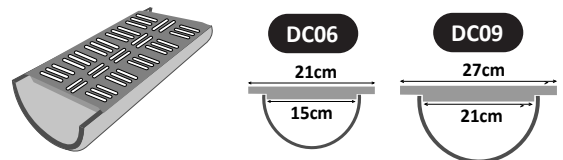
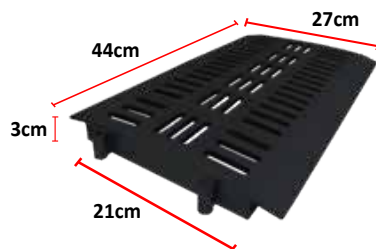
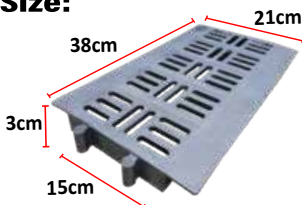
**DC06**

**DC09**



Maximum static load

Size:



HEAVY DUTY DRAIN COVER 沟渠盖		
	SMALL	LARGE
Model Code	DC06	DC09
Barcode	9555221310847	9555221310854
Packing	12pcs / bag; 144pcs / carton	9pcs / bag; 108pcs / carton
Size (cm)	6" x 15"	8.5" x 17"
Load Bearing	300kg	550kg
Color	■	■



- Suitable to uses at houses, warehouse, gardens, factory side and etc.
- Built tough, easy to install and can be recycled.

Features:

- For easier carry and moving.
- Can used to carry huge dustbin.
- Heavy duty, high durable, compact design, sturdiness.
- 6 compact roller more balancing, support and stability.



\*Kaki tong gas



\*3018 can paired with bin V8120.

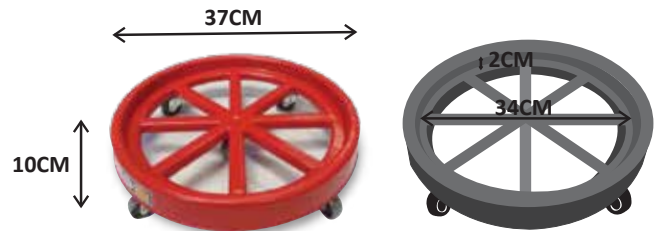


5 Wheels



\*Maximum static load

HEAVY DUTY MULTIPURPOSE ROUND TROLLEY (5 WHEELS) 多用途多轮推车	
Model Code	3018
Barcode	955522131198
Size (cm)	37 (ø) x 10 (H)
Load Bearing	100kgs
Packing	48 units / carton
Color	● ●



\*3017 can paired with bin V8150,V8800 and V8800-2.



6 Wheels



\*Maximum static load

HEAVY DUTY MULTIPURPOSE ROUND TROLLEY (6 WHEELS) 多用途多轮推车	
Model Code	3017
Barcode	9555221307069
Size (cm)	42 (ø) x 10 (H)
Load Bearing	100kgs
Packing	48 units / carton
Color	○



High-quality hook, ▶  
much more convenient to  
hang things such as umbrella  
and others



RAYACO PLASTIC HANDTRUCK	
Model Code	R1-200P
Barcode	9555221309810
Loading Capacity	200 KG
Size (mm)	820x480x840
Packing	50 units / pallet



◀ High-quality wheels,  
smooth loading,  
noiseless



84 cm



Economy Wheel



◀ The functional design includes a  
convenient storage plastic pocket  
put document and other items

VIP HANDTRUCK	
Model Code	VI-155P
Barcode	9555221309858
Loading Capacity	150 KG
Size (mm)	720x480x830
Packing	50 units / pallet



83 cm

48 cm

72 cm

\* The world's first fully plastic platform material except the wheels  
\* Installation not included, handtruck wheel sets can be sold separately



Special designed wheels for heavy loading and better flexibility

RAYACO HEAVY DUTY HANDTRUCK 重型手推车			
Model Code	RI-150	RI-300	RI-500
Barcode	9555221307427	9555221307434	9555221307441
Loading Capacity	150 Kgs	300 Kgs	500 Kgs
Size (mm)	725x475x830	900x595x875	1110x695x875
Total Weight	10.38 kg	13.24 kg	18.24 kg
Packing	50 units / pallet	50 units / pallet	50 units / pallet



VIP HANDTRUCK 手推车		
Model Code	VI-150	VI-300
Barcode	9555221308431	9555221308448
Loading Capacity	150 Kgs	300 Kgs
Size (mm)	725x475x830	900x595x875
Total Weight	9.72 kg	13.56 kg
Packing	50 units / pallet	50 units / pallet

\* Note 1: Wheel sets only available

\* Note 2: Installation not included, handtruck wheel sets can be sold separately

Back - Swivel Wheel

Front - Fix Wheel



ECONOMIC HANDTRUCK WHEEL SETS	
Model Code	V4100P
For Handtruck Model	VI-155P
Wheel Size	10 cm
Wheels	2 pcs Swivel and 2 pcs Fix

Back - Swivel Wheel

Front - Fix Wheel



HEAVY DUTY HANDTRUCK WHEEL SETS	
Model Code	R4100
For Handtruck Model	RI-150 / RI-200P
Wheel Size	10 cm
Wheels	2 pcs Swivel and 2 pcs Fix

Back - Swivel Wheel

Front - Fix Wheel



HEAVY DUTY HANDTRUCK WHEEL SETS	
Model Code	R4125
For Handtruck Model	RI-300
Wheel Size	12 cm
Wheels	2 pcs Swivel and 2 pcs Fix

Back - Swivel Wheel

Front - Fix Wheel



HEAVY DUTY HANDTRUCK WHEEL SETS	
Model Code	R6125
For Handtruck Model	RI-500
Wheel Size	12 cm
Wheels	4 pcs Swivel and 2 pcs Fix

Back - Swivel Wheel

Front - Fix Wheel



Back - Swivel Wheel

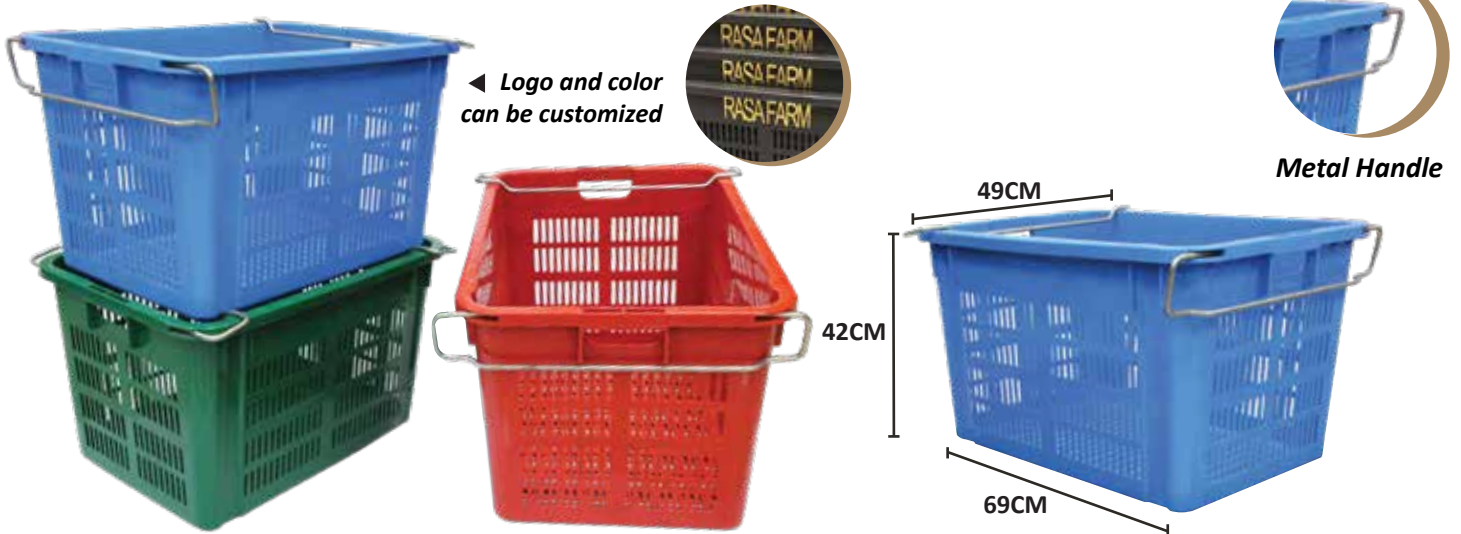
Front - Fix Wheel



STANDARD HANDTRUCK WHEEL SETS		
Model Code	V4100	V4125
For Handtruck Model	VI-150	VI-300
Wheel Size	10 cm	12 cm
Wheels	2 pcs Swivel and 2 pcs Fix	



Usage for durian factory, factory warehouse, even transportation use or commercial usage.



METAL HANDLE INDUSTRIAL CONTAINER 铁柄工业蓝	
Model Code	103
Barcode	9555221308318
Size (cm)	69cm (L) x 49cm (W) x 42cm (H)
Packing	10 units / pallet
Color	● ● ●

\*Note 1: Container can be sold without handle  
Note 2: Logo and color can be customized, Terms & Conditions apply



Usage for durian factory, factory warehouse, even transportation use or commercial usage.

COMMERCIAL INDUSTRIAL CONTAINER 铁柄工业蓝	
Model Code	V103X
Size (cm)	69cm (L) x 49cm (W) x 42cm (H)
Packing	10 units / pallet
Color	●

\*Note 1: Container can be sold without handle  
Note 2: Logo and color can be customized, Terms & Conditions apply

**PLASTIC & METAL HANDLE FRUIT AND VEGETABLE BASKET (BLACK)**



\*Usage for fruit factory, factory warehouse, even transportation use or commercial usage.



PLASTIC HANDLE FRUIT AND VEGETABLE BASKET (BLACK) 塑料柄工业蓝	
Model Code	VP1034
Barcode	9555221312421
Size (cm)	59cm (L) x 37cm (W) x 32cm (H)
Packing	10 units / pallet
Color	●

\*Note 1: Container can be sold without handle  
Note 2: Logo and color can be customized, Terms & Conditions apply

METAL HANDLE FRUIT AND VEGETABLE BASKET (BLACK) 铁柄工业蓝	
Model Code	V1034
Barcode	9555221312391
Size (cm)	59cm (L) x 37cm (W) x 32cm (H)
Packing	10 units / pallet
Color	●

\*Note 1: Container can be sold without handle  
Note 2: Logo and color can be customized, Terms & Conditions apply

**METAL HANDLE FRUIT AND VEGETABLE BASKET**



Logo and color ▶  
can be customized

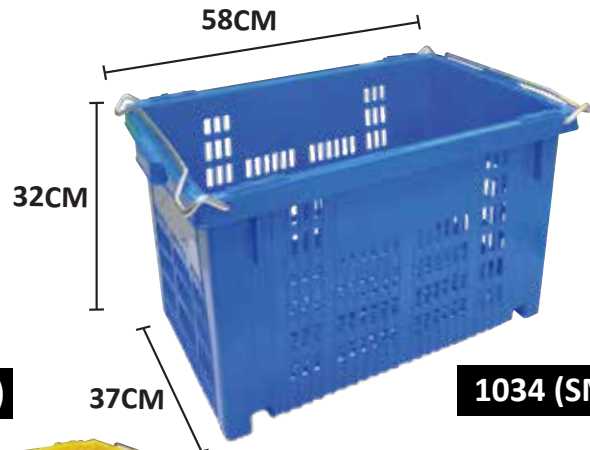


Metal Handle

\*Usage for fruit factory, factory warehouse,  
even transportation use or commercial usage.



**V103 (BIG)**



**1034 (SMALL)**



METAL HANDLE FRUIT AND VEGETABLE BASKET 铁柄工业篮	
Model Code	1034
Size (cm)	58cm (L) x 37cm (W) x 32cm (H)
Packing	10 units / pallet
Color	●●●●

\*Note 1: Container can be sold without handle

Note 2: Logo and color can be customized, Terms & Conditions apply

**METAL HANDLE FRUIT AND VEGETABLE BASKET (BLACK)**



Logo and color ▶  
can be customized



Metal Handle

\*Usage for fruit factory, factory warehouse,  
even transportation use or commercial usage.



**MODEL V103**



**\*HEAVY DUTY**



**MODEL V104**



**\*STANDARD**

METAL HANDLE FRUIT AND VEGETABLE BASKET (HEAVY DUTY) 铁柄工业蓝	
Model Code	V103
Barcode	9555221308301
Size (cm)	69.5cm (L) x 49cm (W) x 42cm (H)
Weight (kg)	3.81kg
Packing	10 units / pallet
Color	●

\*Note 1: Container can be sold without handle  
Note 2: Logo and color can be customized, Terms & Conditions apply

METAL HANDLE FRUIT AND VEGETABLE BASKET (STANDARD) 铁柄工业蓝	
Model Code	V104
Barcode	9555221312438
Size (cm)	69.5cm (L) x 49cm (W) x 42cm (H)
Weight (kg)	3.80kg
Packing	10 units / pallet
Color	●

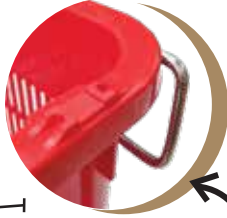
\*Note 1: Container can be sold without handle  
Note 2: Logo and color can be customized, Terms & Conditions apply

## METAL HANDLE FRUIT AND VEGETABLE BASKET

\*Usage for fruit factory, factory warehouse, even transportation use or commercial usage.



**NEW VERSION**



**OLD VERSION**




METAL HANDLE FRUIT AND VEGETABLE BASKET 铁柄工业蓝	
Model Code	103
Size (cm)	69.5cm (L) x 49cm (W) x 42cm (H)
Packing	10 units / pallet
Color	●●●●

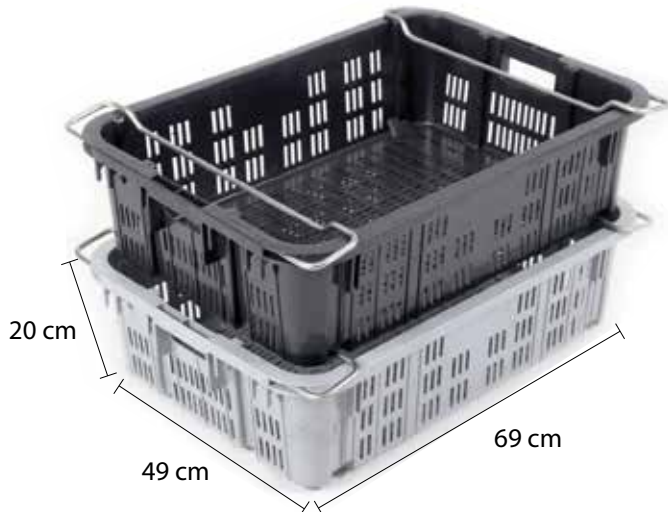
\*Note 1: Container can be sold without handle

Note 2: Logo and color can be customized, Terms & Conditions apply



- Can use for put vegetable, fruit, bread, stock for easy move and display.
- Usually use at fruit rack, storage rack, store storage, factory.

HDPE POULTRY INDUSTRIAL TRAY 禽业用篮	
Model Code	114
Barcode	955221307489
Packing	10 units / pallet
Color	



METAL HANDLE INDUSTRIAL CONTAINER 铁柄工业篮	
Model Code	V1052
Barcode	955221306741
Packing	10 units / pallet
Color	

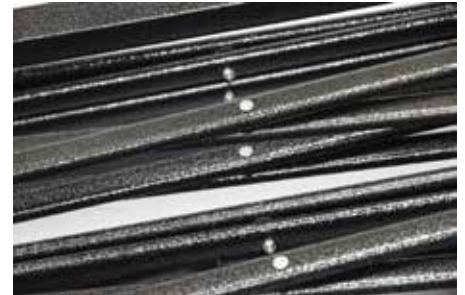
Strong load bearing



Top reinforcement



Avoid hurting hands



Economy series (STANDARD B) 扁铁

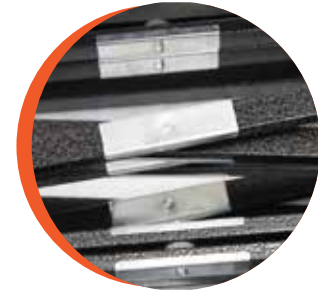


Rain & sun protection canopy cloth



CANOPY BLACK STEEL (STANDARD B) 黑钢扁铁帐篷				
	6" X 6" (±11kgs)	8" X 8" (±13kgs)	10" X 10" (±15kgs)	10" X 15" (±20kgs)
Model Code	CA2020	CA2525	CA3030	CA3045
Barcode	9555221307632	9555221309728	9555221309728	9555221309728
Weight	10/11kg	12/13kg	12/13kg	12/13kg
Packing	50 pcs / pallet	50 pcs / pallet	50 pcs / pallet	50 pcs / pallet

VIP SERIES (HEAVY DUTY AAA) 方铁



CANOPY BLACK STEEL				
	8"X8" (±19kgs)	10"X10" (±22kgs)	10"X15" (±28kgs)	10"X20" (±35kgs)
Model Code	CB2525	CB3030	CB3045	CB3060
Barcode	9555221307007	9555221307014	9555221307021	9555221309735
Weight	18/19 kg	21/22 kg	27/28 kg	34/35 kg
Packing	50 pcs / pallet	50 pcs / pallet	30 pcs / pallet	30 pcs / pallet

SUPER HEAVY DUTY SERIES



CANOPY BLACK STEEL				
	10"x10" (±33kgs)	10"X15" (±42kgs)	13"X20" (±65kgs)	13"X26" (±80kgs)
Model Code	CM3030	CM3045	CM4060	CM4080
Weight	32/33 kg	41/42 kg	63/65 kg	80/82 kg
Packing	10 pcs / pallet	10 pcs / pallet	6 pcs / pallet	6 pcs / pallet

\*Disclaimer: Canopy weight might vary due to cloth thickness



\*关后4尺高，可直接放进车尾箱，配有4套拉绳地厚钉以稳固帐篷。  
The canopy will be 4 feet tall when it is closed. It can be put directly into the trunk of the car. Equipped with 4 sets of drawstrings and thick nails inserted in the ground to stabilize the canopy.



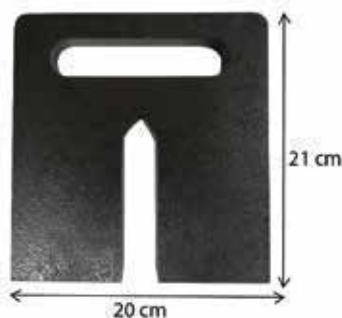
\* Interior canopy top



CANOPY WHITE STEEL 便携式帐篷	
10" X 10" (±13kgs)	
Model Code	CF3030
Weight	12/13 kg
Packing	50 pcs / pallet



CANOPY IRON PLATE	
Model Code	IP5
Weight	5 kgs
Size	21cm (H) x 20cm (W)
Packing	4 pcs / carton



\*Suitable for outdoor, can protect canopy from floating up.

MODEL	DESCRIPTION	PACKING
CSW25	8ft Canopy Side Wall	40 pcs / Ctn
CSW25-W	8ft Canopy Side Wall with Window	40 pcs / Ctn
CSW30	10ft Canopy Side Wall	25 pcs / Ctn
CSW30-W	10ft Canopy Side Wall with Window	25 pcs / Ctn
CSW45	15ft Canopy Side Wall	20 pcs / Ctn
CSW45-W	15ft Canopy Side Wall with Window	20 pcs / Ctn
CSW30 x 3	9meter Canopy Side Wall With Window (For 10" x 10" Canopy)	8 pcs / Ctn
CSW30Z	10ft Canopy Side Wall With Zip	25 pcs / Ctn



\*Disclaimer: Canopy weight might vary due to cloth thickness



Bersatu series (STANDARD AA) 方铁



Comfortable height adjustment

**FEATURES**



Suitable for commerce, residence community, places of entertainment, outside wedding, sports event, party, exhibition, trade fair, product show and celebration

CANOPY BLACK STEEL (STANDARD AA) 黑钢方铁帐篷				
	6" X 6" (±15kgs)	8" X 8" (±18kgs)	10" X 10" (±19kgs)	10" X 15" (±25kgs)
Model Code	CS2020	CS2525	CS3030	CS3045
Barcode	9555221307694	9555221307601	9555221307618	9555221307625
Weight	14/15kg	17/18kg	18/19kg	24/25kg
Packing	50 pcs / pallet	50 pcs / pallet	50 pcs / pallet	50 pcs / pallet



\*Excellent choice to be used at night market, wedding events, catering event and as car park shelter.



## CANOPY CLOTH

MODEL	DESCRIPTION	PACKING
CKA2525	Canopy Cloth 420D (8x8)	10 pcs/ Ctn
CKA3030	Canopy Cloth 420D (10x10)	10 pcs/ Ctn
CKA3045	Canopy Cloth 420D (10x15)	10 pcs/ Ctn
CKS2020	Canopy Cloth 600D (6x6)	10 pcs/ Ctn
CKS2525	Canopy Cloth 600D (8x8)	10 pcs/ Ctn
CKS3030	Canopy Cloth 600D (10x10)	10 pcs/ Ctn
CKS3045	Canopy Cloth 600D (10x15)	5 pcs/ Ctn
CKS2020	Canopy Cloth 420DD (灰胶底) (6x6)	10 pcs/ Ctn
CKS2525	Canopy Cloth 420DD (灰胶底) (8x8)	10 pcs/ Ctn
CKS3030	Canopy Cloth 420DD (灰胶底) (10x10)	10 pcs/ Ctn
CKS3045	Canopy Cloth 420DD (灰胶底) (10x15)	5 pcs/ Ctn
CKB2525	Canopy Cloth 600DD (加厚) (8x8)	10 pcs/ Ctn
CKB3030	Canopy Cloth 600DD (加厚) (10x10)	10 pcs/ Ctn
CKB3045	Canopy Cloth 600DD (加厚) (10x15)	5 pcs/ Ctn
CKB3060	Canopy Cloth 600DD (加厚) (10x20)	5 pcs/ Ctn
CKB2525	Canopy Cloth 800DDD (8x8)	10 pcs/ Ctn
CKB3030	Canopy Cloth 800DDD (10x10)	10 pcs/ Ctn
CKB3045	Canopy Cloth 800DDD (10x15)	5 pcs/ Ctn
CKB3060	Canopy Cloth 800DDD (10x20)	5 pcs/ Ctn

\*\*\*Suitable Wear In all Kind Of Outdoor Environment



●Farmer●



●Orchard Worker●



●Construction Worker●



STRAW HAT 花草帽	
20"	
Model Code	A20-E
Barcode	9555221306291
Packing	6 dozens / bag ; 15 dozens / bag



PLASTIC HAT 塑料帽		
Model Code	20P	18P
Barcode	9555221304259	9555221304266
Packing	120 pcs / carton	120 pcs / carton



**FEATURES :**

- Durable, light weight, comfortable.
- Suitable for all types of work, especially for plumbing, repairing, gardening and factory work.

COLOR COTTON GLOVE 彩色幼纱手套		
Model Code	GF401C	GF501C
Barcode	9555221305713	9555221305720
Weight	400g	500g
Packing	50 dozens / bag	50 dozens / bag

COLOR COTTON GLOVE 彩色幼纱手套		
Model Code	GF760	GF1200
Barcode	9555221305737	9555221305744
Weight	800g	1000g
Packing	50 dozens / bag	50 dozens / bag



WHITE COTTON GLOVE 白色幼纱手套		
Model Code	GF401	GF501
Barcode	9555221305713	9555221305720
Weight	400g	500g
Packing	50 dozens / bag	50 dozens / bag



XL TONG 挟子	
Description	Packing
No. 1 Tong (60cm)	50 units / carton
No. 2 Tong (50cm)	50 units / carton
No. 3 Tong (45cm)	50 units / carton
No. 4 Tong (38cm)	100 units / carton
No. 5 Tong (35cm)	100 units / carton

SICKLE 镰刀	
Model Code	S1205
Barcode	9555221304310
Packing	60 units / carton



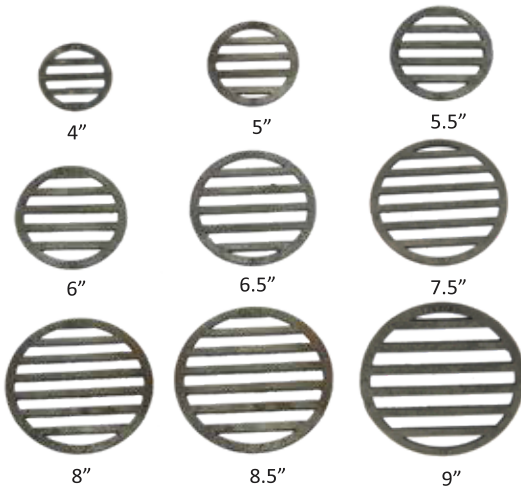
STRAW MAT WITH BINDING 草席	
Model Code	3x6M
Size	34.5" x 66"
Packing	100 units / carton

GARDEN SCISSORS 花园剪刀		
Model Code	6023 (Branch)	6022 (Leaf)
Barcode	9555221305157	9555221306352
Size (cm)	14cm (L)	16cm (L)
Packing	24 pcs/ box; 144 pcs/ carton	24 pcs/ box; 144 pcs/ carton



6022

6023



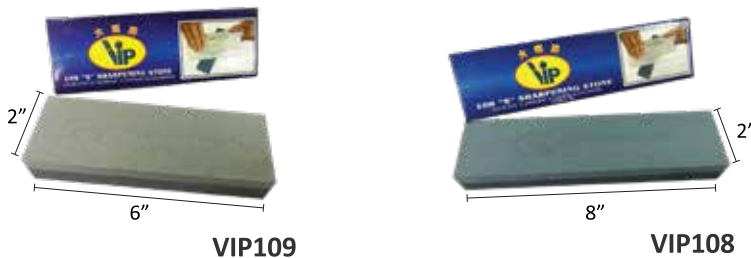
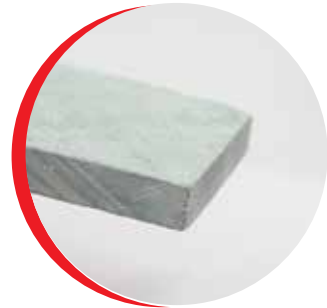
IRON GRATE 铁炉排	
Description	Packing
Iron Grate 4	240 units / carton
Iron Grate 4.5	200 units / carton
Iron Grate 5	150 units / carton
Iron Grate 5.5	150 units / carton
Iron Grate 6	100 units / carton
Iron Grate 6.5	80 units / carton
Iron Grate 7	60 units / carton
Iron Grate 7.5	60 units / carton
Iron Grate 8	50 units / carton
Iron Grate 8.5	50 units / carton
Iron Grate 9	30 units / carton



DIAMOND SHARPENING STONE 钻石牌双面氧化刀石		
	6"	8"
Model Code	DB621	DB821
Barcode	9555221308233	9555221308219
Packing	50 pcs / carton	50 pcs / carton



GOLD FISH SHARPENING STONE 金鱼刀石		
	4"	8"
Model Code	117	118
Barcode	9555221309766	9555221309773
Packing	20 dozen / carton	21 dozen / carton

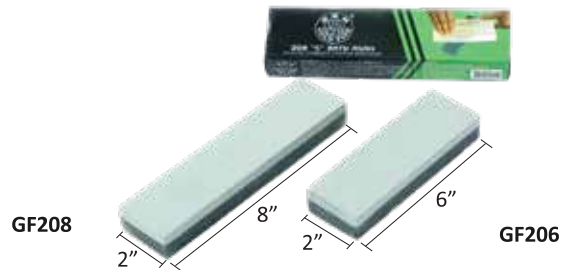


VIP SHARPENING STONE 双面刀石		
	6"	8"
Model Code	VIP109	VIP108
Barcode	9555221306444	9555221306451
Packing	50 pcs / carton	50 pcs / carton





GOLD FISH SHARPENING STONE 金鱼标志刀石		
	6"	8"
Model Code	GF109	GF108
Barcode	9555221305393	9555221305386
Packing	50 pcs / carton	50 pcs / cartom



GOLD FISH SHARPENING STONE 金鱼标志刀石		
	6"	8"
Model Code	GF206	GF208
Barcode	9555221308196	9555221308202
Packing	50 pcs / carton	50 pcs / cartom



GOLD FISH SHARPENING STONE 金鱼标志刀石	
8" x 3" x 2"	
Model Code	GF823
Barcode	9555221306109
Packing	20 pcs / carton



- 100% Virgin Material
- Non Toxic
- Eco Friendly



- Food Grade
- Multipurpose
- Suitable for both hand
- Extra Thickness
- Good for more heavy duty work

### DISPOSABLE PLASTIC PE GLOVE

Model Code	PG100	PG101	PG102
Barcode	9555221310021	9555221310038	9555221310045
Packing	100 box/ctn	72 box/ctn	48 box/ctn



Standard  
(PG100)



Heavy Duty  
(PG101)



Super Heavy Duty  
(PG102)



VT10



VT15



VT20



VT35



MT169

PESTICIDE & TRAP SERIES 粘蝇/粘鼠板&捕鼠器					
	Fly Catcher	Mouse Trap	Quality Mouse Trap	Heavy Duty Mouse Trap	Mouse Trap
Model Code	VT10	VT15	VT20	VT35	MT169
Barcode	9555221307977	9555221307960	9555221307809	9555221307816	9555221308162
Packing	100 pcs / box; 20 boxes / carton	20 pcs / box; 200 pcs / carton	24 pcs / box; 144 pcs / carton	24 pcs / box; 144 pcs / carton	2 pcs / pkt; 100 pkt / carton



CAUTIONS: Please be careful when handle the mouse trap. Dont touch the bait adjuster when the trap is engage.



How to use :



Turn the lower bait adjuster counterclockwise and pull it out to view.



Put the bait (ham, peanut, bread, etc.), then put it back.

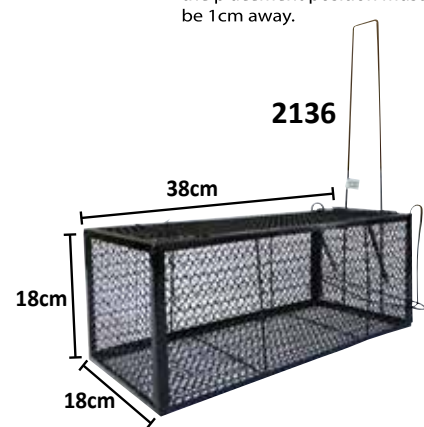
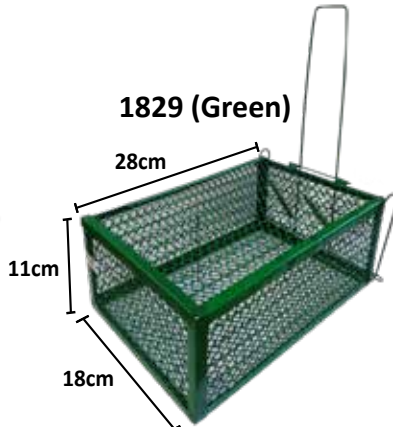
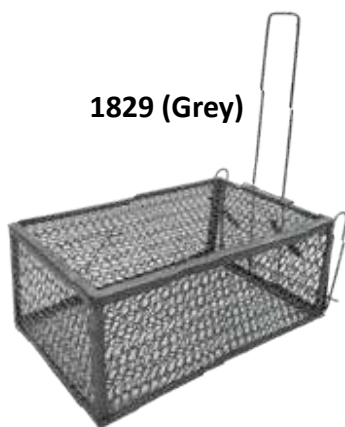


Push down on the back of the mouse trap press until it engages with the bottom.

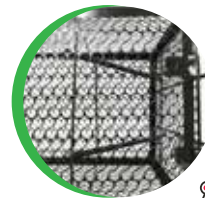


Place it in a place where rats often lay eggs in holes, corners, sides of doors, etc. The distance between the placement position must be 1cm away.

MOUSE TRAP SERIES 捕鼠器	
Model Code	MT148
Barcode	9555221310830
Size	72mm x 140mm x 75mm
Packing	200pcs / carton



MOUSE TRAP SERIES 捕鼠器		
	Large Mouse Trap	XL Mouse Trap
Model Code	1829	2136
Barcode	9555221307274	9555221307342
Size	28cm (L) x 11cm (H) x 18cm (W)	38cm (L) x 18cm (H) x 18cm (W)
Packing	20 pcs / carton	16 pcs / carton
Color	Green / Grey	Green / Grey



**RAYACO**®

大大牌

☎ : 603 - 6091 9588, 603 - 6091 8630

📠 : 603 - 6091 9618, 603 - 6091 9619

✉ : rayaco@rayaco.com.my

🌐 : www.rayaco.com.my



All photographs are for visual purposes only. Actual products color may be various.

**RAYACO**®



**VIP MEDPRO**®

**RAYACO PRO**®