



PRIMA *solidwall*

Features



PRIMA^{solidwall}

IBS, Solid, Fast, Fire-Rated

Approved Application by BOMBA:

Separating Wall, Compartment Wall, Protecting Corridor, Fire-Rated Wall between Office, Hotel/Hostel Rooms.

PRIMA^{solidwall} is a non-load bearing light weight concrete wall system created by bonding hard wearing **PRIMA^{liner}**™ fibre cement boards fixed onto galvanised steel stud frames. The water resistant panels are easily erected on site and then the core is filled with cement, sand and expanded polystyrene beads (EPS) concrete mix. The joints between the panels are then flush jointed and set, leaving the wall ready for applied finishes.

PRIMA^{solidwall} is designed to replace the conventional and outmoded brick wall system, the **PRIMA^{solidwall}** system complies with the local and international fire rating, sound, thermal insulation and wall robustness' standards. **PRIMA^{solidwall}** system is CIDB Industrialized Building System (IBS) certified which also contributes to the Green Building Index (GBI) ratings. **PRIMA^{solidwall}** is a highly impact resistant, 2 hours fire-rated, solid straight wall that meets the CONQUAS and QLASSIC requirements combined with speed of construction, durability and excellent finishing.

Product Benefits

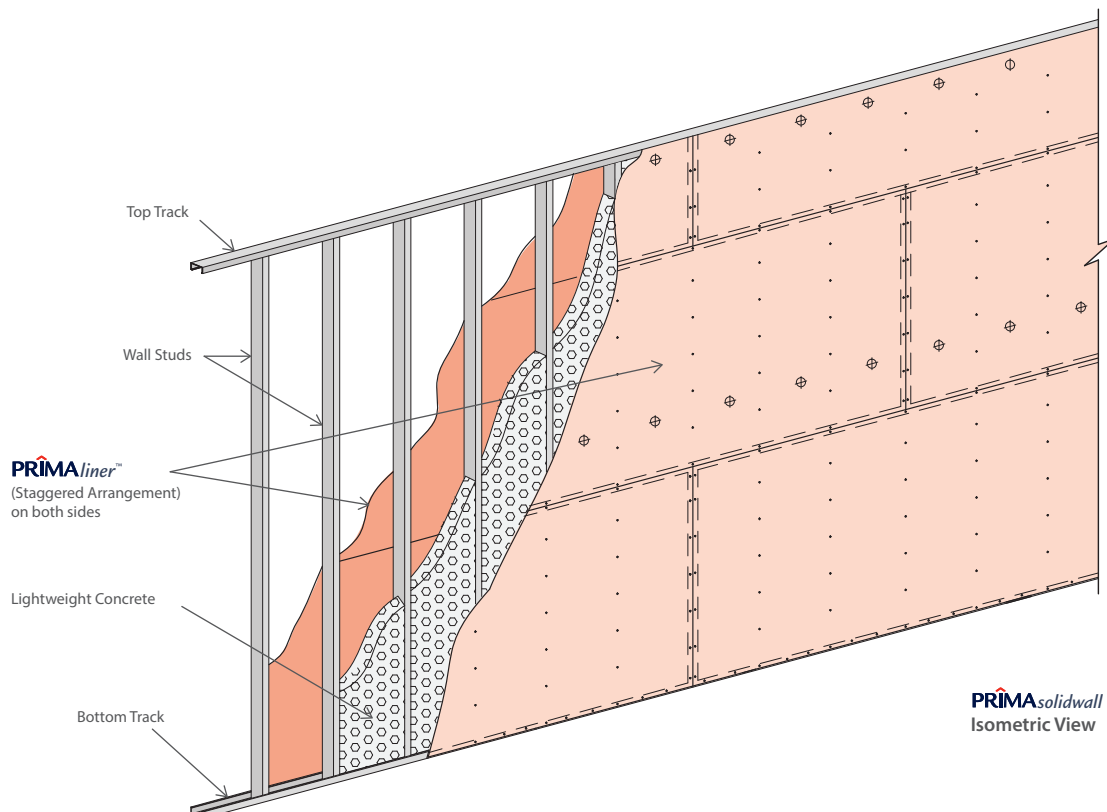
- Fire-Rated (BOMBA)
- Cost Effective
- Space Efficient
- CONQUAS & QLASSIC Standards
- Better Site Management, Low Wastage
- Fast & Lightweight (IBS)
- Simple Construction Method
- Solid, Strong & Secured (BS 5234, Part 2)
- High STC & Thermal Resistant
- No Stiffeners Required

** Please refer to HCI Technical Department for further design requirement.*

Performance & Robustness

- IBS factor : 1.0
- Severe Duty (BS 5234: Part 2)
- Adhered to CONQUAS & QLASSIC surface evenness requirements
- Installation 3 times faster than brick wall

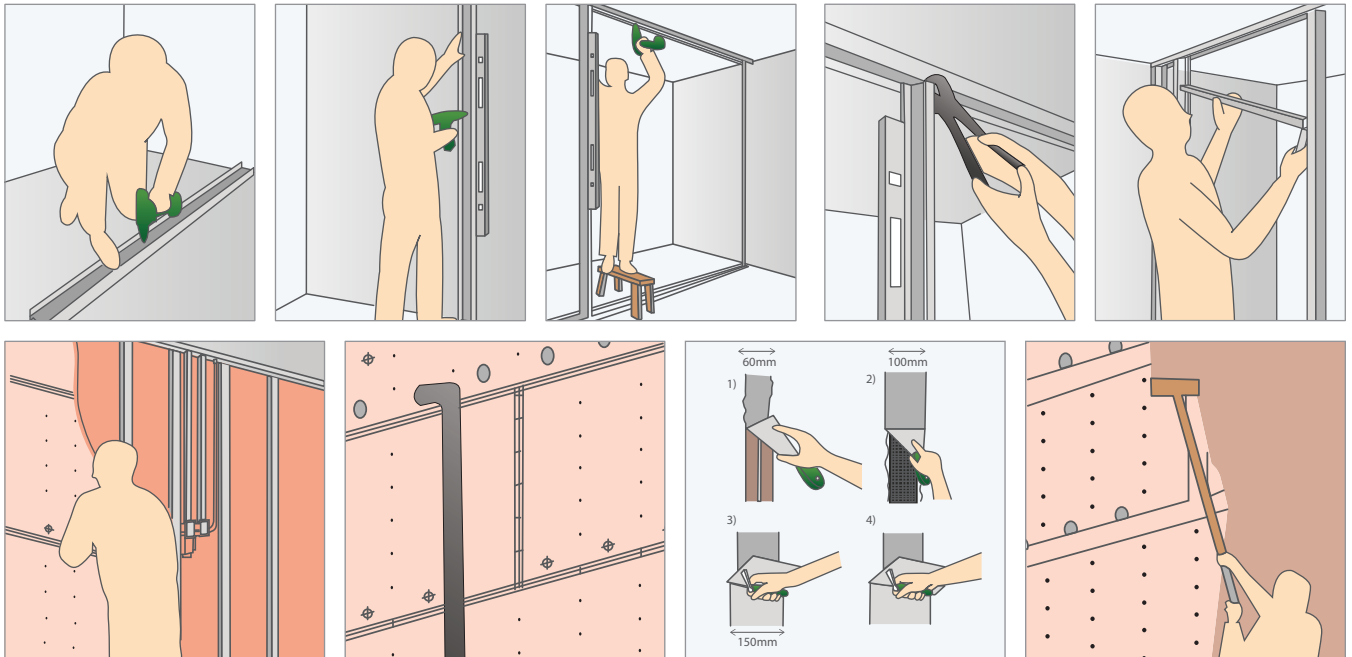
PRIMA^{solidwall} System Overview



PRIMA[®]solidwall - Fire-Rated

System Configuration	System ID	System Components	Wall Thickness	Wall Mass	Sound Transmission Class (STC)	Fire Rating (BS476, Part 22)	Thermal Properties
	SW76 L6	a) PRIMA[®]liner™ Board : 6mm x 1220mm x 2440mm b) Lightweight Concrete Mix (Cement + Sand + Expanded Polystyrene (EPS) Beads) c) PRIMA[®]wall stud 64mm x 0.5mm BMT (min)	76mm	76kg/m ²	39dB	2 hours	R value: 0.238 m ² K/W
	SW104 L6	a) PRIMA[®]liner™ Board : 6mm x 1220mm x 2440mm b) Lightweight Concrete Mix (Cement + Sand + Expanded Polystyrene (EPS) Beads) c) PRIMA[®]wall stud 92mm x 0.55mm BMT (min)	104mm	100kg/m ²	44dB	2 hours (190 Mins Integrity)	R value: 0.317 m ² K/W

How to install PRIMA[®]solidwall ?



1. Set the wall position fix the soffit & floor tracks (U Tracks).
2. Fix the intermediate wall studs (C Stud).
3. Fix door frame & window frame.
4. Install the 1st layer of **PRIMA[®]liner™** board.
5. Fix M&E services.
6. Cover with the 2nd layer of **PRIMA[®]liner™** board.
7. Create the openings for lightweight concrete infill.
8. Infill the EPS lightweight concrete into wall cavity.
9. Flush jointing & patching of fastener.
10. Finishes.

The wall is complete and ready for painting, texture coating, wallpaper or even tiling application.



PRIMA Solidwall components calculator
<http://www.primafibrecement.com/Resources/Tools>

Joint Details

PRIMA^{liner}™ sheet joints can be treated as described in **Figure 1**, by incorporating **PRIMA^{fibre mesh tape}** and **PRIMA^{jointing compound PLUS+}**. Use only **PRIMA^{jointing compound PLUS+}**.

The best result can be achieved when both **PRIMA^{liner}**™ edges have recesses. Jointing non-recessed edges should be avoided.

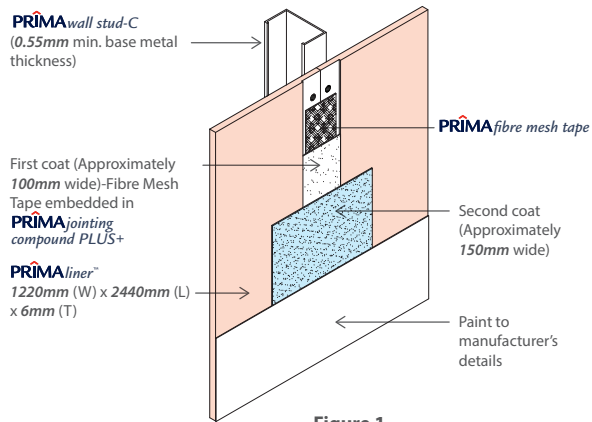


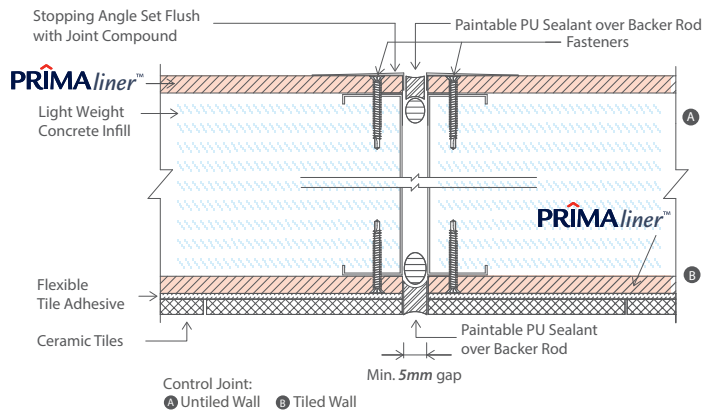
Figure 1

Expansion Joint

Expansion Joints must be provided to accommodate anticipated movement within a building. **PRIMA^{solidwall}** systems require Expansion Joints Spacings to be as following:

Recommended Expansion Joints Spacing

Untiled Walls	9.0m
Tiled Walls	4.8m



Finishes



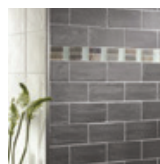
Paint



Wall Covering



Texture Coating



Tiles

PRIMA^{liner}™ can be decorated with 2 coats of 100% quality water-based Acrylic Paint. For general-purpose applications, there is no requirement for Primers or Sealers. Alternatively, the sheet surface can be decorated with wall covering materials, such as Wallpaper. In all cases, coating manufacturers' recommendations must be strictly adhered to. For wet area application, Tile Finishing may be applied.

Please refer to paint manufacturers for advice.

- The flexible Tile Adhesive shall comply to **AS 2358-1990**; Adhesive for ceramic wall tiles and mosaics.
- The choice of the Tile Adhesive varies, depending on the substrate and the type of tiles used. Refer to Tile Adhesive manufacturers for advice.
- DO NOT tile over the Expansion Joint.
- Expansion Joint should be sealed with flexible water-resistant Acrylic Sealant.
- For exterior finishes, the exterior surface must be coated with an appropriate finish. The exterior surface of **PRIMA^{solidwall}** can be finished with any of a wide variety of coatings, provided they are compatible with fibre cement, the fasteners and **PRIMA^{jointing compound PLUS+}**. A layer of exterior sealer and 2 layers of exterior paint are preferable.

WARRANTY

Hume Cemboard Industries Sdn Bhd ("the Company") warrants that it will at all times ensure that the products referred to herein ("the Products") shall supplied by it to the purchaser free of any manufacturing defects and defective materials used in their manufacture. In the event and if contrary to this assertion the Products prove to be defective, whether as a result of manufacturing defects or arising from the Company's use of defective materials, the Company will supply replacement Products. The Company shall, however, have the option and may choose to reimburse the purchaser the purchase price of the Products instead. The Company shall not be liable for any economic or consequential losses arising from any use of defective Products. This warranty shall be void unless the purchaser has, in its handling and installation of the Products, complied with the recommendations contained in this brochure and other good building practices expected of a reasonable purchaser.

ADVISORY NOTE

Successful installations of Hume Cemboard Industries Sdn Bhd's Products depend on a large number of factors that are outside of the scope of this brochure. Particular design, detail, construction requirements and workmanship are beyond the control of the Company. As such, Hume Cemboard Industries Sdn Bhd's warranty does not extend to non-usability of Products or damage to Products arising from poor or defective designs or systems or poor quality of workmanship in the installation of Products.

The information stated in this brochure is correct at time of printing, and subject to change without notice. For the latest product update please refer to www.primafibrement.com



Termite Resistant



Fire Resistant



Water Resistant



Weather Resistant



100% Asbestos free



Superior Paint Adhesion



High Workability



Aesthetically Pleasing



50 Years Durability

For more information, please contact us at:

Hume Cemboard Industries

A Member of the Hong Leong Group

No. 12 Jalan Tandang, 46050 Petaling Jaya, Selangor, Malaysia.

Tel: +603 7625 9999

Fax: +603 7625 7822

Email: sales@humecemboard.com.my

www.primafibrement.com

[PrimaHCl](#)

Accessories

PRIMA^{fastener} - Wing Tek 22mm C1

Self-embedding head wing tek screw, No 8# x 22mm



Applications:

4.5mm- 6.0mm board thickness

PRIMA^{fastener} - Wing Tek 28mm C1

Self-embedding head wing tek screw, No 8# x 28mm



Applications:

7.5mm - 12.0mm board thickness

PRIMA^{jointing compound PLUS+}

Applications:

28kg/tub. For flush jointing and patching of holes on Prima fibre cement board.



PRIMA^{Mesh Tape}



Applications:

Alkaline resistant tape for internal & external application



Hume Cemboard Industries

A Member of the Hong Leong Group

No. 12 Jalan Tandang, 46050 Petaling Jaya, Selangor, Malaysia.

Tel: +603 7625 9999

Fax: +603 7625 7822

Email: sales@humecemboard.com.my

www.primafibrement.com

[PrimaHCl](#)



A CIDB certified - IBS status company



MyHP00175/16



MADE FROM RECYCLED MATERIALS