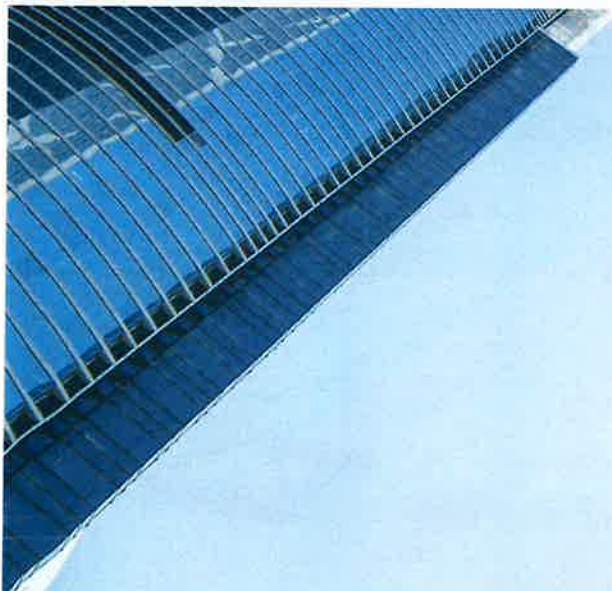


COMPANY PROFILE



**AIR COND & MV
SPECIALIST**

**Integrated 5S CENTRE put
together office, warehouse,
training, cafe26 and
aquarium & hydroponic
systems**



ABOUT US

A Brief Story About The Company

KENWISE SDN BHD is a SSM 2011 registered company graded highest CIDB G7, highly specialized in Air Conditioning & Mechanical Ventilation (ACMV) and other related fields in construction industry. Currently the company is operating at 8trium administrative office in BSD and 5S Integrated center housing Showroom, Sales warehouse, Seminar room, Servicing workshop & Sparepart Storage in Seksyen 26 Shah Alam.

The company started from an very effective trading and sales center and rapidly grew and expanded and even diversified the business range to emerge as a reputable and all-rounded one stop solution ACMV company in Malaysia.



VISION

KENWISE is inherently a brand and total solution by itself and well recognized consciously and subconsciously by all the respective eager and trusted stakeholders in the various categories/levels/dimensions/segments of the market. KEN is WISE and effective in meeting customers' needs and expectations.

MISSION

KENWISE provides reliable, accurate and consistent solutions to comply with the entire range of commercial and technical requirements from our customers and the company will always continue refine and strengthen the noble values of satisfying the market needs

01

Continuous keeping our internal training programs up-to-date to ensure our entire team's skills and competency at all the respective levels in the organizational hierarchy are always in line with the rapid changes of the market

02

Continuous self adjusting and aligning our market positioning to keep in pace with the market trends and provide suitable product types and range at the most competitive prices to meet all the challenging specifications and project budgeting constraints from diverse types of clients

03

Maintain sharp, highly effective & productive and contractually competent project management team to continue embark on high profile and demanding projects for achieving highest business and commercial objectives.

04

Maintain strong and healthy financial position to continue forging solid mutual partnerships with all the reliable vendors for growing mutual business together in today challenging market



CORPORATE INFO

KENWISE SDN BHD

Founder: Bryan Koh, Managing Director

Contact details: (E) kwkoh@kenwisesb.com, (M) 012-6616112

01

SSM Registration:

- Reg.No: 966568-D
- Date Incorp: 2 Nov 2011
- PAIDUP: RM1.0million
- COMP SEC: LM TAM & CO

02

ADDRESS 1 (Admin)

T2-19-08, 8TRIUM Office Tower,
Jalan Cempaka SD 12/5,
52200 Bandar Sri Damansara,
Kuala Lumpur, WP
Malaysia
(T) 03-6263 1951
(E) kenwise2019@gmail.com

03

ADDRESS 2 (Main)

No.39, Jalan Serendah 26/41,
Sekitar 26, SEKSYEN 26,
40400 SHAH ALAM,
Selangor, Malaysia
(T) 03-5888 5512
(M) 016-738 1951

04

CIDB Certified

GRED: G7
KATEGORI: B/CE/ME
PENGKHUSUSAN:
B04/
CE21/
M01 M04 M10 M15

05

BANKERS

1. UNITED OVERSEA BANK
2. MAYBANK
3. OCBC BANK
4. RHB BNK

06

LEGAL & QS CONSULTANTS

1. LOI & CO
2. WEPM PROJECT
MANAGEMENT PLT

BOARD OF DIRECTORS

1. BRYAN KOH
2. KOH YOKE LIN



MANAGING DIRECTOR

STATEMENT AND WELCOME MESSAGE

KENWISE started up confidently with optimized integrative business approaches and had been steadily and wisely riding on preempted wave of changes in competitive but structured markets. the solid performances have been building strong market's confidence in KENWISE's long term commitments and forward planning supports.



The Social

This aspect looks at how the company manages relationships with employees, suppliers, customers, and the communities where it operates. Factors such as employee treatment, labor practices, human rights, and community impact are evaluated here.



The Environment

This criterion examines how a company performs as a steward of nature. It includes considerations like a company's carbon footprint, waste management practices, water usage, and how it handles environmental risks.



The Governance

Governance involves the internal systems, controls, and procedures a company uses to govern itself, make decisions, and comply with the law. It includes the structure and composition of the board of directors, executive compensation, transparency, and shareholder rights.





BRYAN KOH

KENWISE MD

- ☎ 012-6616 112
- ✉ kwkoh@kenwisesb.com
- 🌐 www.kenwisesb.com
- 📍 39, 5S SEKITAR 26, 40400 SHAH ALAM

Experiences

DUNHAM-BUSH	Jan 1995 -Dec 2018
SMARTTECH	Jan 2019 -Nov 2011
KENWISE	Nov 2011 -Now 2024

- ✓ Overall manage sales and marketing multiple portfolio in local market
- ✓ Technical Support for DB export markets such as USA, China, Mexico, India, Singapore, Indonesia, Philippines, Thailand, Pakistan, etc by intensive trainings and/or seminars on Energy Optimization of District Cooling Systems (DCS) and applications on various types of buildings
- ✓ Design & Built and Project management and implementation of Ice Thermal Energy Storage (TES) Integrated District Cooling Systems
- ✓ EPCC technical evaluation and implementation proposals and detailed analysis and feasibility study reports

Market Recognitions & Industrial Accreditations

Malaysia Air Cond & Refrigeration Association (MACRA) President 2006-2008 & 2009-2010
Regular invited Speaker and/or trainer in Seminars endorsed by IEM, ACEM, MACRA, PAM, MASTER BUILDERS, JKR, CIDB, Universities etc
Invited Speaker and/or trainer in Seminars conducted in USA, China, Mexico, Singapore, India, Indonesia, Philippines etc



Passionate and professional Air Conditioning & Mechanical Ventilation (ACMV) guru dedicating substantial energy in sharing core values and principles in optimizing ACMV systems' integrated energy in totality and balanced approaches to closely perfecting and managing effectively the heat transfer envelopes and ultimate efficiency of operating a building's overall power mechanism

PROJECT REFERENCE

- ✓ Infineon Semiconductor
- ✓ UiTM Hospital TES District Cooling System (DCS)
- ✓ University Taman Ilmu TES District Cooling System (DCS)
- ✓ NTCC Manila TES DCS
- ✓ SEAR Mexico TES DCS
- ✓ Greenbelt Manila TES DCS
- ✓ PFCC TES DCS

Certifications

- ✓ Green Building Index Facilitator
- ✓ APESMA MBA
- ✓ HRDF Certified Trainer TTT

5S TOTAL SOLUTIONS

A Brief Description About The Total Solutions

KENWISE has been effectively positioned as a very comprehensive Air Conditioning & Mechanical Ventilation TOTAL SYSTEM and A-Z SOLUTIONS PROVIDER that help the customers to overcome diverse types of situational and urgent needs. KENWISE's all-rounded technical competency ensure peace of mind for end users of many categories.



Market Driven Basic Implementation

Uphold the spirit of innovation and creativity in shaping a solution that can be accepted by the wider community.



5S CONCEPT

5S signify an Integrated Centre housing 5 typical and basic functions of KENWISE's business scope through SHOWROOM, SALES, SEMINAR, SPAREPARTS & SERVICING. From 5S KENWISE provides to the market comprehensive and effective total solution in many types and categories of project.



Decrease Industry GAP by 1 stop Solution

The solutions offered need to be based on sound market decisions so that they can have an impact.

PRODUCT OVERVIEW

KEY PRODUCTS AND ASSOCIATED COMPONENTS

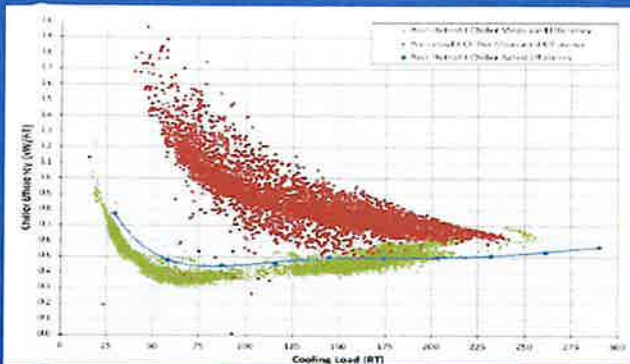
KENWISE provides customers the best combinations of products and components packaged together for achieving the highest system integrated efficiency in totality



PRODUCT/TECHNOLOGY UPDATE

OIL FREE & MAGNETIC BEARING CENTRIFUGAL COMPRESSOR TECHNOLOGY

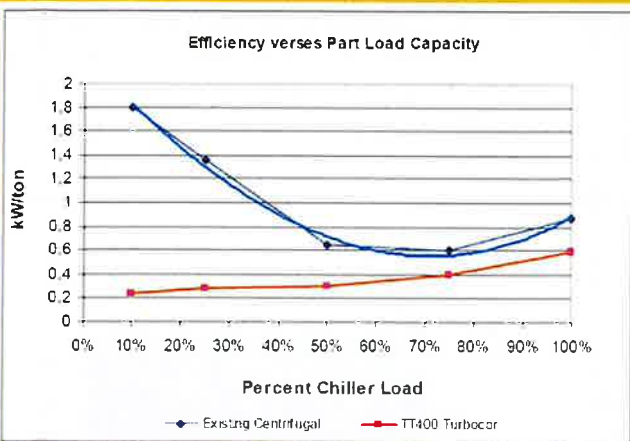
KENWISE's strategic collaboration with reliable and reputable SMART chiller manufacturer offers market and **DATA CENTRES** a smart and integrative solution to conserve energy. The overall and integrated efficiency of chiller new technology have been helping green conscious customers to save a lot of money in terms of electricity bills and other operating costs.



Improved efficiency and power cost

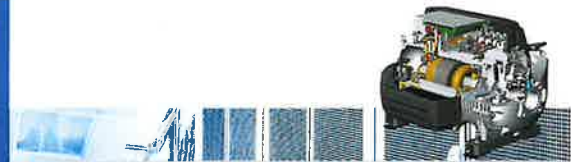
Total electricity bill reduced by more than 40%
 Chiller efficiency improved from 0.82 ikw/RT to 0.49 ikw/RT
 Payback in less than 2years

- 100% oil free eliminates oil related maintenance costs
- Magnetic bearings eliminate frictional losses
- One moving part assures long service life
- Highest efficiency for Lowest Operating Costs
Very low starting current < 2 amps
- Lowest noise and vibration as standard
- The compressors speed adjusts automatically with fully integrated VSD, providing excellent part-load efficiencies
- Multiple Compressors offers built-in redundancy



Better IPLV

Multiple inverter-driven Centrifugal Compressors improve Chiller's overall performance.



PRODUCT/TECHNOLOGY UPDATE

FULL CHAIN LIQUID COOLING SOLUTION FOR DATA CENTRES

A full-chain liquid cooling solution provides a holistic approach to managing thermal loads, ensuring optimal performance and longevity of electronic systems. Two advanced solutions:

1. Direct-to-Chip Liquid Cooling used in data centers, this method involves directly cooling the CPUs and GPUs with liquid, often combined with rack-level cooling systems that manage heat for multiple servers simultaneously.
2. Immersion Cooling involves submerging entire systems or components in a dielectric liquid that efficiently transfers heat. This method is highly efficient but more complex and expensive to implement.



Benefits of Full-Chain Liquid Cooling

- **Enhanced Cooling Efficiency:** Superior heat dissipation compared to air cooling, allowing for higher component performance.
- **Noise Reduction:** Liquid cooling systems are typically quieter, as fans can operate at lower speeds.
- **Overclocking Potential:** Allows for higher performance settings on CPUs and GPUs by keeping temperatures low.
- **Longevity:** Better temperature control can extend the life of components.

Immersion Full Chain Liquid Cooling

Comprehensive Detection and Intelligent Control

Intelligent linkage control of liquid cooling system, matching the required cooling capacity regulation system, the primary loop water pump and outdoor cooling equipment are optimized for overpressure protection, automatic fluid replenishment and online maintenance.



PROJECT REFERENCE

KEY TRACK RECORDS OF KENWISE AND SUBSIDIARIES

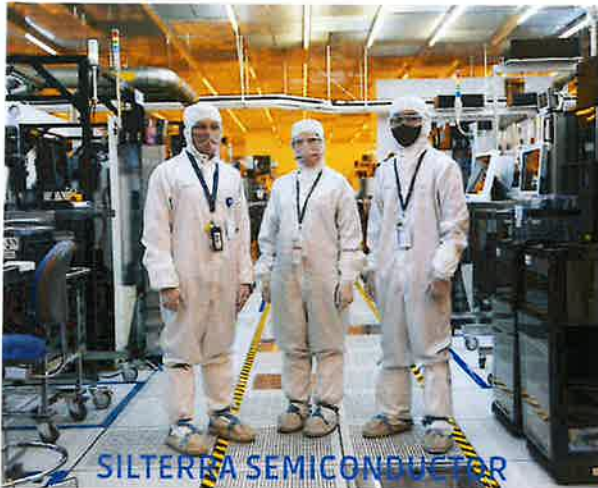
KENWISE's group of companies have been dedicatedly and successfully completing following high profile of stringent technical & documentation requirements projects:



INFINEON SEMICONDUCTOR



MARA HQ



SILTEREA SEMICONDUCTOR



MRT KLCC EAST



SAMSUNG SDI



MRT CONLAY

PROJECT REFERENCE

KEY TRACK RECORDS OF KENWISE AND SUBSIDIARIES

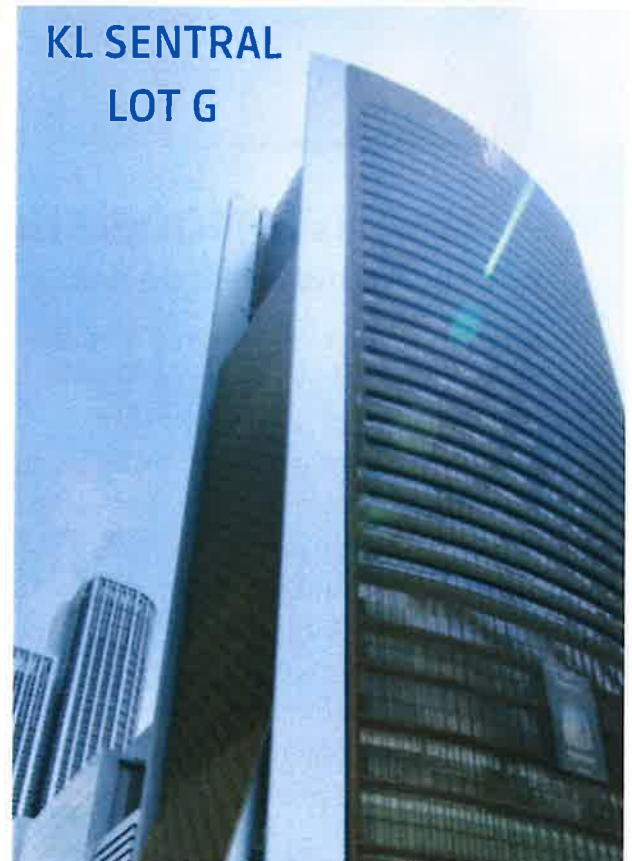
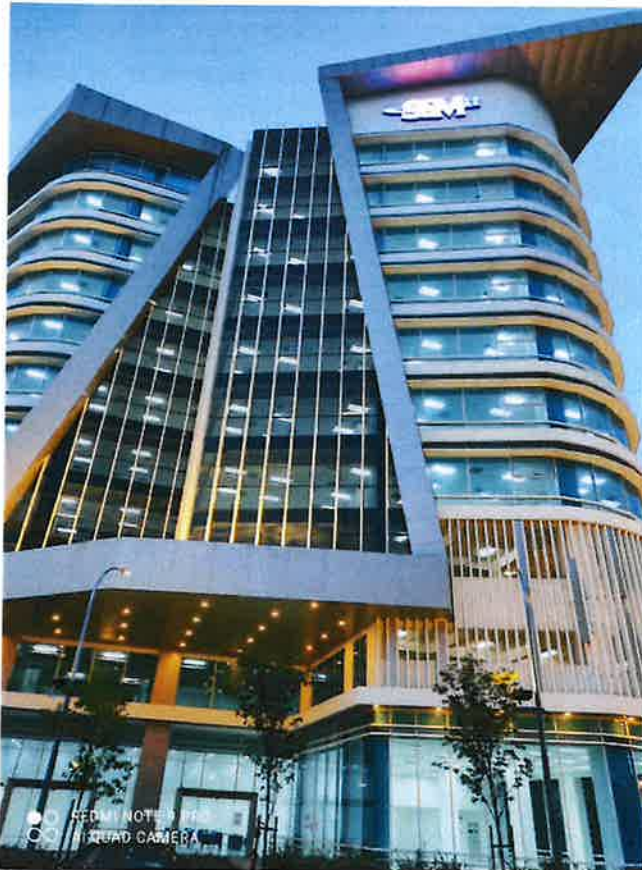
KENWISE's group of companies have been dedicatedly and successfully completing following commercial projects:



PROJECT REFERENCE

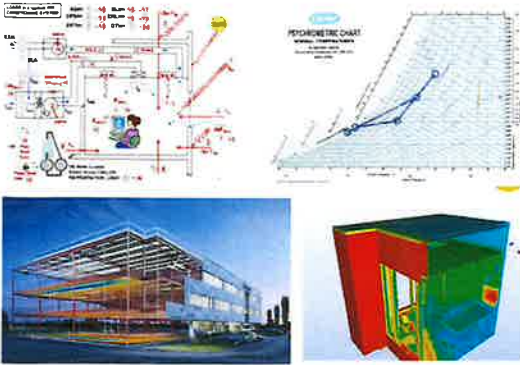
KEY TRACK RECORDS OF KENWISE AND SUBSIDIARIES

KENWISE's group of companies have been consistently and successfully helping many developments to complete following prominent buildings:



PROJECT DESIGN & MANAGEMENT

ENGINEERING/DESIGN

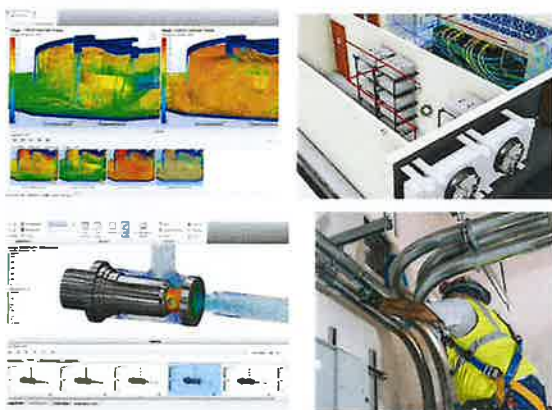
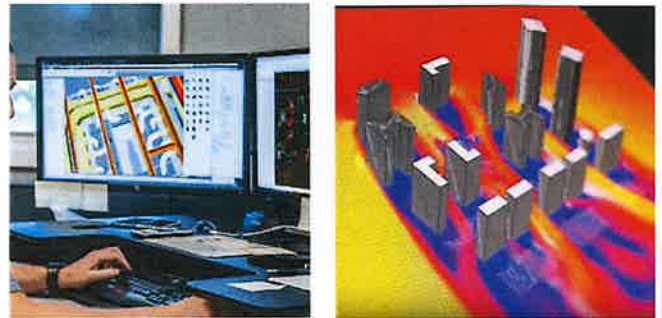


HEAT LOADS ESTIMATION/SIMULATION

Accurate heat loads are dynamically simulated by specialized software and feasibility studies are carried out in advance to provide clear scenario for the clients to make sensible and viable decisions. Simulation software is used to optimize system design and performance.

PREDICTIVE MODELLING OPTIMIZING HVAC PERFORMANCE

Specialized software is used to model and simulate the behavior of HVAC systems in virtual environments, providing valuable insight into thermal comfort, energy efficiency, and airflow dynamics within a given space. By employing advanced algorithms and simulation techniques, these tools can predict how variables—such as equipment specifications, architectural features, and environmental conditions—affect a building's HVAC performance.



EQUIPMENT SIMULATIONS

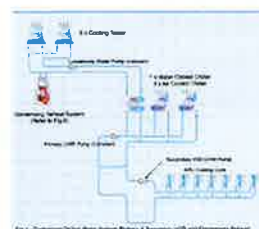
Customize and optimize the components

As a positive result of predictive modelling which generate optimum integrated performance data, all the components in the system can be selected and optimized to perform the highest possible levels of efficiency at the respective tiers of the entire ACMV system.

EQUIPMENT SELECTIONS

Integrating the best combinations

Simulations of components enable selections of most efficient equipment to achieve best integrated performance.



PROJECT DESIGN & MANAGEMENT



Verification of Quantities REMEASURING AND RECALCULATING

Check Calculations:

Review the calculations for each item to ensure they are accurate. This involves re-measuring and recalculating the quantities based on the drawings and specifications.

Cross-Referencing:

Compare the quantities in the BoQ with those in the design documents (e.g., drawings, specifications) to ensure consistency.



RATIONALIZATIONS

CONTRACT QUALIFICATIONS & RATIONALIZED

Contract team begin reviewing, adjusting, and optimizing the listed quantities of materials, labor, and services required for a construction project. This process ensures that the BoQ is accurate, efficient, and aligned with the project's scope and budget.



Optimization of Resources

Optimize the COST components

Material Optimization:

Evaluate whether the specified quantities of materials can be reduced without compromising the project's quality or integrity. This might involve using alternative materials or construction methods.

Labor Efficiency:

Assess the labor allocation to ensure it is efficient. This might include reviewing the tasks assigned and the time estimated for each, making adjustments where necessary to avoid over or under-estimation.

PROJECT DESIGN & MANAGEMENT



Risk Assessment Contingency & Compliance Check

Contingencies:

Ensure that the BoQ includes appropriate contingencies for unforeseen circumstances. Rationalization may involve adjusting these contingencies based on project-specific risks.

Compliance Check:

Verify that all items comply with regulatory and safety standards, adjusting quantities if necessary to meet these requirements.



Cost Rationalization

MARKET RATES & VALUE ENGINEERING

Market Rates Comparison:

Compare the unit rates in the BoQ with current market rates to ensure they are reasonable and competitive.

Value Engineering:

Explore opportunities to reduce costs without sacrificing quality, such as by substituting more cost-effective materials or construction techniques.

Preventative Maintenance Checklist for HVAC			
Manufacturer of Item	See the project manual for the manufacturer's name and model number.		
Building or Area Being Inspected	10th Floor North Wing		
Room or Space Being Inspected	10th Floor		
Date and Name of Inspector	March 14, 2024		
HVAC			
August 1 of each year or a year with seasonal shut-up and run-up periods			
1 New Item	Check and adjust pressure of system to correct manufacturer's specifications.	Yes	
1 New Item	Recharge R-134a or R-410A refrigerant to the manufacturer's design point.	Yes	
1 New Item	Use a certified service technician to perform maintenance on all control and safety devices.	Yes	
1 New Item	For units of 10 tons or less, inspect and clean air filters and coils.	Yes	
1 New Item	Inspect the cooling coils for proper operation and clean if necessary.	Yes	
1 New Item	Oil pans, gas valves, and other controls for proper operation.	Yes	
1 New Item	Check electrical controls.	Yes	
1 New Item	Inspect wiring, check motor nameplate for data and voltage.	Yes	

Elimination of Redundancies

DUPLICATES & SCOPE ALIGNMENT

Duplicate Items:

Identify and remove any duplicate or unnecessary items in the BoQ.

Scope Alignment:

Ensure that all items in the BoQ are necessary and align with the project's scope, removing any that are not required.

PROJECT DESIGN & MANAGEMENT



Documentation and Approval

SIGNED OFF & DOCUMENTED

Review and Sign-Off :

The rationalized BoQ should be reviewed by the project team, including the quantity surveyor, project manager, and client, for approval.

Documentation:

Keep a record of all changes made during the rationalization process for future reference and audit purposes.

WORK PROGRAM PLAN

Project Scope Definition

Objectives:

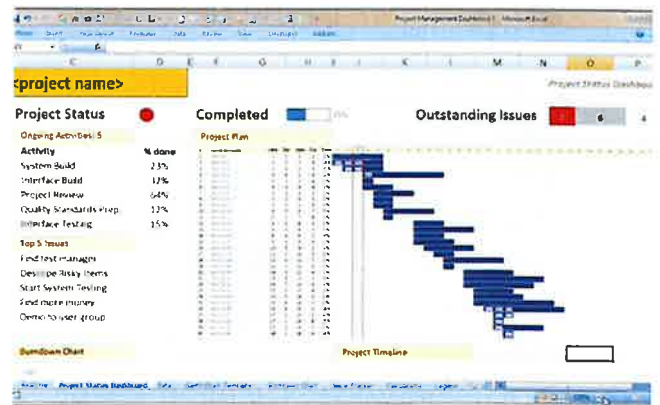
Clearly define the project's goals and what needs to be achieved.

Deliverables:

List the key outputs or products that the project will produce.

Work Breakdown Structure (WBS):

Break down the project into smaller, manageable tasks or work packages, detailing each activity needed to complete the project.



SCHEDULE DEVELOPMENT

Tasks and Dependencies

Activity Sequencing:

Identify the order of tasks and dependencies among them.

Timeline:

Establish a timeline for each task, defining start and end dates.

Gantt Chart:

Use a Gantt chart or other scheduling tools to visualize the project timeline and the relationship between tasks.

Project Process Dependencies with Account and Case Management



PROJECT DESIGN & MANAGEMENT



Risk Management Plan Mitigating Risks

Risk Identification:

Identify potential risks that could affect the project.

Risk Analysis:

Assess the likelihood and impact of each risk.

Mitigation Strategies:

Develop strategies to minimize or eliminate risks.



Resource Allocation

Human and Materials

Human Resources:

Identify the project team members, their roles, and responsibilities.

Material Resources:

List the materials and equipment needed and assign them to specific tasks.

Budget:

Define the budget, detailing costs associated with labor, materials, and other resources.



Communication Plan

Information and Reporting

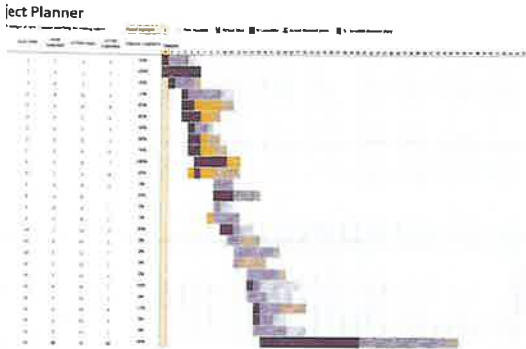
Stakeholder Analysis:

Identify all stakeholders and their information needs.

Reporting Mechanisms:

Establish how and when progress will be reported, including the frequency of meetings, updates, and reports.

PROJECT DESIGN & MANAGEMENT

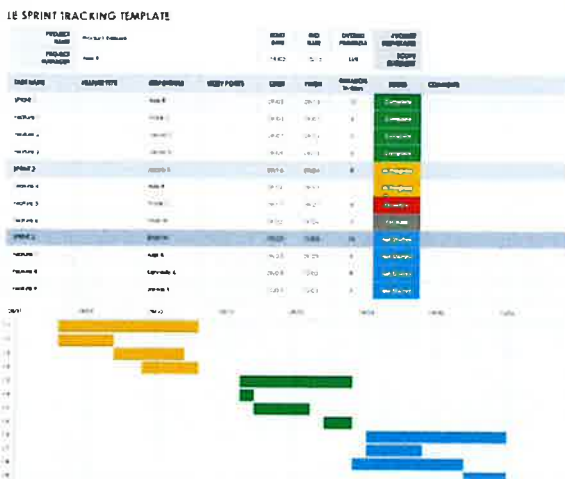


Issues Identified and Resolved Deviations Delays & Control

Variance Analysis: Compare planned vs. actual performance to identify deviations. Analyze the cause of these variances.

Corrective Actions: Implement corrective actions to address any issues or delays. This may involve reallocating resources, adjusting schedules, or modifying the project scope.

Change Control: Manage changes to the project scope, schedule, or budget through a formal change control process to ensure that impacts are understood and approved.



Progress Tracking

Milestone and KPI

Milestone Tracking: Monitor key project milestones to ensure they are achieved on time.

Task Completion: Regularly update the status of tasks, comparing actual progress against the plan.

Performance Metrics: Use Key Performance Indicators (KPIs) to measure the effectiveness and efficiency of the project.



Tools and Techniques

Project Management Software: Tools like MS Project, Primavera, or Asana can help in scheduling, resource management, and progress tracking.

Gantt Charts and Network Diagrams: Visual tools that help in understanding project timelines and task dependencies.

Dashboards and Reports: Real-time dashboards and automated reports for quick insights into project health.

Risk Management Software: Tools to track, assess, and manage risks effectively.

POTENTIAL MARKET

Market size for ACMV is borderless due to natural geographical constraints faced by different countries carrying individual policy in environment and strategy in country development. Therefore, there is a pressing need for resources relocation and redistribution to overcome their respective internal constraints. As a result emerge the strong trending of cross country and/or direct foreign investments and KENWISE's diverse expertise and competency in ACMV tag along well with the current worldwide economic trending.



<p>2024</p> <p>DATA CENTRES</p> <p>Booming strong</p>	<p>2024</p> <p>SEMICONDUCTOR</p> <p>Foreseeable market demand</p>	<p>2024</p> <p>CHEMICAL & OIL&GAS</p> <p>Complementary match well the market needs</p>
---	---	--

DUCTWORK PERFORMANCE

Tight monitoring and controlling of Project Timelines

Project team is closely overseeing and managing the schedule of a project to ensure that tasks and milestones are completed on time. This typically involves regularly tracking progress, identifying any potential delays, adjusting schedules as needed, and making sure that all team members are staying on track with their assigned tasks. The goal is to prevent any schedule slippage and to ensure that the project is completed within the specified timeframe.



MECHANICAL (WORK PROGRAMME)

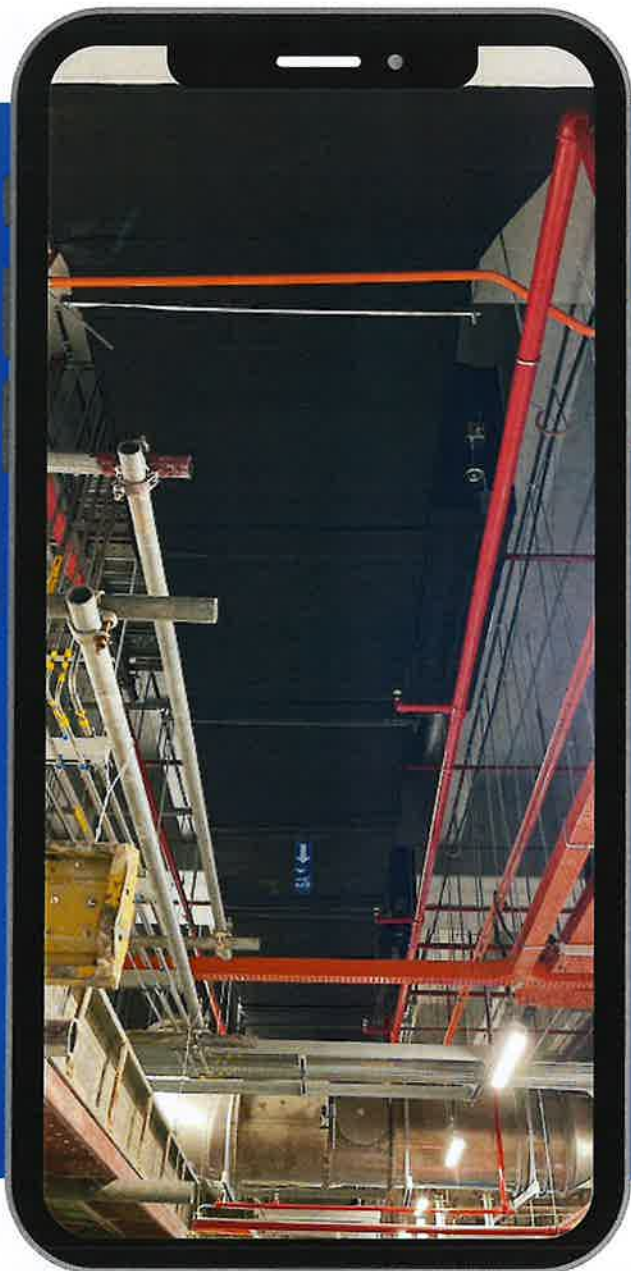
Task Name	Start	End	Duration
MECHANICAL (WORK PROGRAMME)	2023-01-01	2023-01-31	30 Days
MECHANICAL (WORK PROGRAMME)	2023-01-01	2023-01-15	15 Days
MECHANICAL (WORK PROGRAMME)	2023-01-15	2023-01-31	16 Days

PROJECT SCHEDULES

94%

KENWISE TEAM CATCH UP CAPABILITY

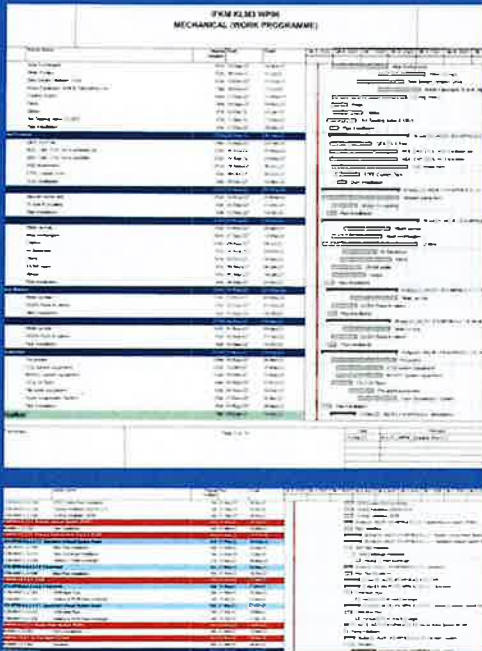
93%



PIPEWORK PERFORMANCE

Effective Work Program planning and implementation

Project team is designing and executing a structured plan of activities or tasks to achieve specific goals within an organization or project by defining clear objectives, establishing a timeline, allocating resources (time, personnel, budget), identifying potential risks and creating contingency plans. And Implementation focuses on executing the plan according to the schedule, coordinating team efforts, monitoring progress and adjusting the plan as necessary to adapt to changing conditions or unforeseen challenges.



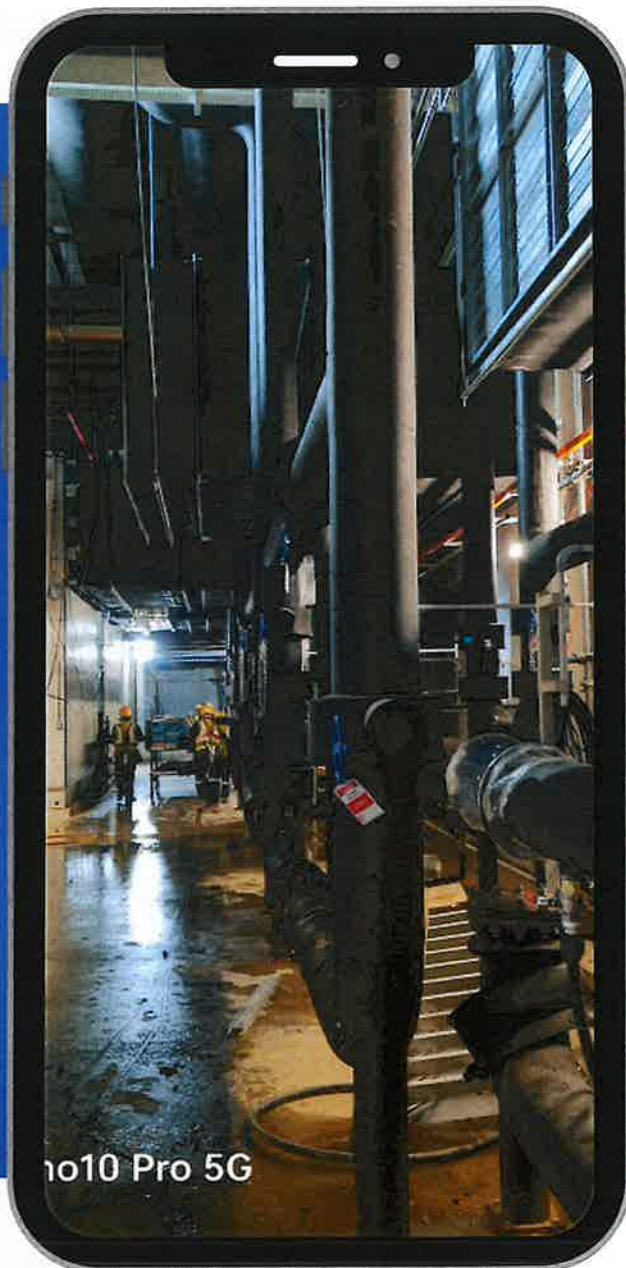
The image shows a tablet displaying two documents. The top document is titled 'PKM KEMAS WIPR MECHANICAL WORK PROGRAMME' and contains a detailed table with columns for 'Activity', 'Start', 'End', and 'Status'. The bottom document is another table with columns for 'Activity', 'Start', 'End', and 'Status', featuring a color-coded background (red and blue) for different rows.

PROJECT SCHEDULES

94%

KENWISE TEAM CATCH UP CAPABILITY

93%



KENWISE'S A-Z EXPERTISE

INTEGRATED competencies of Kenwise Teams in ACMV

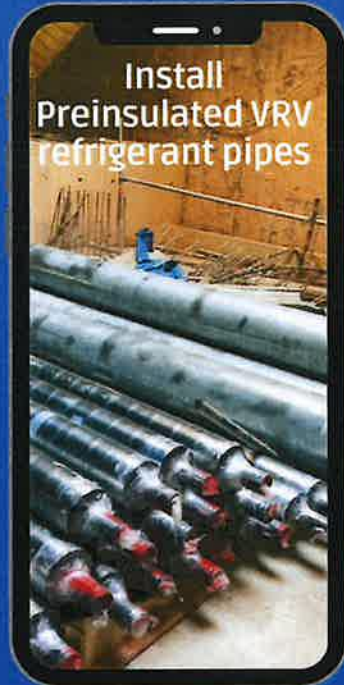
Kenwise has been very good and well recognized at providing A-Z all rounded total solution to our customers. Our competent teams have been effectively carrying out diverse levels of ACMV scope of works to help various categories of customers to achieve respective levels of desired performance expectations.



KENWISE'S A-Z EXPERTISE

INTEGRATED competencies of Kenwise Teams in ACMV

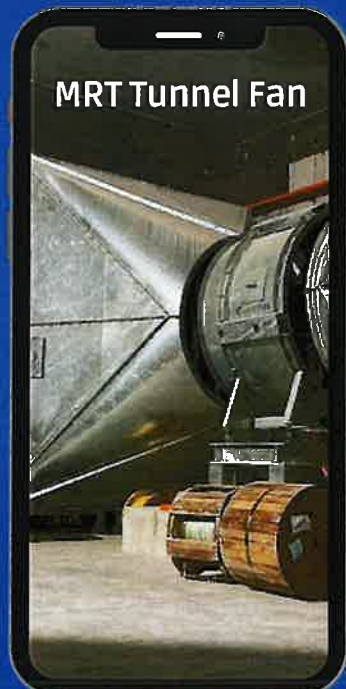
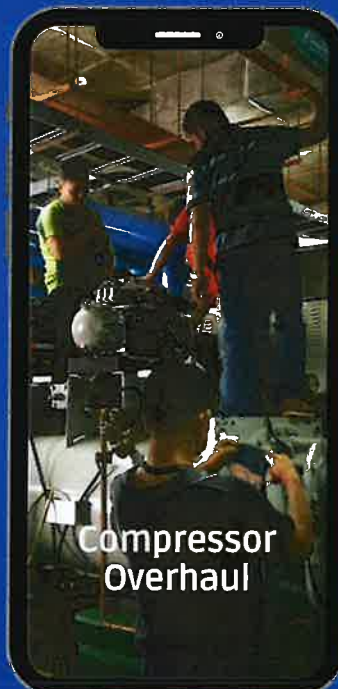
Kenwise has been very good and well recognized at providing A-Z all rounded total solution to our customers. Our competent teams have been effectively carrying out diverse levels of ACMV scope of works to help various categories of customers to achieve respective levels of desired performance expectations.



KENWISE'S SERVICE BACKUP

Total Commitment of Kenwise in Contingency Servicing

Kenwise has been very committed in ensuring customers' peace of mind when facing unforeseeable contingency and emergency needs in overcoming tough operational disruption and our fast response giving our customers full confidence to continue their respective planning in either retrofitting and/or expansion programs.



CREDENTIALS/CERTIFICATES



Certificate of Appreciation
presented to
KOH KEN WENG

for conducting the
One-Day Seminar on "Application of Smartwibe Technology in Ice Thermal Energy Storage and Chiller System Design"
at Kuala Lumpur (12-13 March 2007) at IEM Conference Hall, Petaling Jaya, Selangor

Organized by
Building Services Technical Division
The Institution of Engineers, Malaysia
held on 12 June 2007
2nd Floor, Bangunan Injeneri, Petaling Jaya, Selangor



Certificate of Appreciation

Awarded to
KOH KEN WENG

in recognition for presenting a talk on
"Application of Ice Thermal Energy System and Benefit for use in Air Conditioning"

Organized by
Building Services Technical Division
The Institution of Engineers, Malaysia
held on 12 June 2007
2nd Floor, Bangunan Injeneri, Petaling Jaya, Selangor



Certificate of Appreciation

Awarded to
KOH KEN WENG

in recognition for his Special Lecture delivered at the
One Day Course on APPLICATION OF ICE THERMAL ENERGY SYSTEM AND BENEFIT FOR USE IN AIR CONDITIONING AND HVAC SYSTEM COMPARISONS
(IEM Approved 05/05/07)

Organized by
Mechanical Engineering Technical Division
The Institution of Engineers, Malaysia
held on 29 June 2007
IEM Conference Hall, Bangunan Injeneri, Petaling Jaya, Selangor



Handwritten signature and date: 27 August 2007

How Ice Thermal Storage helps in The Savings Of Electrical Cost and The Importance Of Having A Proper Design and Control

As Speaker for Technical Talk
Mr Bryan Koh Ken Weng

CERTIFICATE OF APPRECIATION
PRESENTED TO



ASHRAE SINGAPORE CHAPTER



CREDENTIALS/CERTIFICATES



CERTIFICATE OF APPRECIATION

This is to certify that

Koh Ken Weng

has participated as a Speaker at the

Seminar on MS1525:2007 Code of Practice on Energy Efficiency and Use of Renewable Energy for Non-Residential Buildings

held on 27 & 28 November 2007 at Best Western Premier Seri Pacific Kuala Lumpur

BAM approved CPD 3 points

BEM approved CPD 16 hours

Puan Jabidah Baharin
 Director General
 Standards Malaysia

Ir. Yap Kok Ming
 President
 Association of Consulting Engineers Malaysia

TRAINING WORKSHOP ON BUILDING MAINTENANCE
 21-23 NOVEMBER 2012 WEDNESDAY TO FRIDAY
 CIDB CONVENTION CENTRE KUALA LUMPUR

Logos: ISTIC, CIBD MALAYSIA, BEMCI

SEATS ARE LIMITED! APPLY BEFORE 12th NOV 2012

Speakers PROFILE

Who should attend?

- BUILDING MAINTENANCE MANAGERS
- ASSETS AND FACILITIES MANAGERS
- MAINTENANCE ENGINEERS
- GOVERNMENT OFFICERS (MAINTENANCE DIVISION)
- BUILDING OWNERS
- LOCAL AUTHORITIES OFFICERS
- MAINTENANCE CONTRACTORS
- ACADEMICIANS

WHO SHOULD ATTEND?

- BUILDING MAINTENANCE MANAGERS
- ASSETS AND FACILITIES MANAGERS
- MAINTENANCE ENGINEERS
- GOVERNMENT OFFICERS (MAINTENANCE DIVISION)
- BUILDING OWNERS
- LOCAL AUTHORITIES OFFICERS
- MAINTENANCE CONTRACTORS
- ACADEMICIANS

PERKUTAJUAN POLARISASI BANGSA PEMBANGUNAN DAN PENGKOMERSIALAN PROJEK INOVASI APPARATUS TO SUPPORT A MECHANICAL DEVICE

2. Aduan dan ucapan terima kasih kepada semua peserta antara lain: Hovner Kapurseran CREATE wakil dari MAMM Perumahan Dan Penyelidikan Masyarakat, Hovner Apparatus To Support A Mechanical Device wakil dari Kemaset Sdn Bhd, Ujain C, CHKWSE, HINAVACAM 1801 dan lain-lain.

SEMINAR ON DISTRICT COOLING AND INTEGRATED ENERGY SYSTEM
 Tuesday Programme, 15th April 2008

8:30 am Registration of Guests and Participants

9:30 am Address by the President of MACRA, Mr. Ho Lay Yang

10:15 am Address by Mr. Ho Lay Yang, President of MACRA, Mr. Ho Lay Yang, President of MACRA, Mr. Ho Lay Yang, President of MACRA

10:45 am Refreshment & TOUR OF PHOTO EXHIBITION by Guest of Honour Mr. Ho Lay Yang

11:30 am Address by Seminar Chairman, Mr. Khor Kay Boon, President of MACRA

12:15 pm LUNCH BREAK

1:45 pm Introduction by Seminar Chairman, Mr. Khor Kay Boon, President of MACRA

2:45 pm "Building Integrated Photo Exhibit" by Seminar Chairman, Mr. Khor Kay Boon, President of MACRA

3:45 pm "Energy Audit for Buildings" by Mr. Ong Cheong Loo, CEO of Green Building Solutions

4:30 pm Questions and Answer Session

5:00 pm END OF SEMINAR

SEMINAR ON DISTRICT COOLING AND INTEGRATED ENERGY SYSTEM
 15th April 2008
 E & O Hotel, 10, Farquhar Street, 10220 Pulau Pinang

Organization: _____
 Address: _____
 Telephone: _____
 Fax: _____

REGISTRATION FEES

MACRA Members (Staff of Major International Firms/Institutes)	RM 200.00
Members of AC/AM/IEE	RM 300.00
Members of the public	RM 350.00
Virtual Discount (to be made available from the organization)	10%

SEMINAR ON DISTRICT COOLING AND INTEGRATED ENERGY SYSTEM
 15th April 2008
 E & O Hotel, 10, Farquhar Street, 10220 Pulau Pinang

Organization: _____
 Address: _____
 Telephone: _____
 Fax: _____

REGISTRATION FEES

MACRA Members (Staff of Major International Firms/Institutes)	RM 200.00
Members of AC/AM/IEE	RM 300.00
Members of the public	RM 350.00
Virtual Discount (to be made available from the organization)	10%

SEMINAR ON DISTRICT COOLING AND INTEGRATED ENERGY SYSTEM
 15th April 2008
 E & O HOTEL, 10, Farquhar Street, 10220 Pulau Pinang

Brought to you by: **MACRA**

Malaysian Air Conditioning and Refrigeration Association

MACRA Members (Staff of Major International Firms/Institutes)

CREDENTIALS/CERTIFICATES

INITIATIVE PROGRAMME & SPEAKERS

Wednesday, Sept 24th 2003 - Day 1

- 7:30 am Registration
- Welcome Address by Organising Chairman Mr Ng Yung Kong
- Speech by President of MASHRAE 2003/2004 Mr Yoo Soon Kah
- Ozone Depleting Substances Phase out Programme & Strategies En Ismail Ithain, Principal Asst. Director, Gen. Ozone Protection Sector, DOE, Ministry of Science, Technology & the Environment, Malaysia
- Phase Presentation by ASHRAE Distinguished Lecturer Mr William J. Coard "The Ethics and Economics of Energy Conservation"
- Improving Indoor Air Quality Efficiently Mr Liming Zhang, Bly Air, Malaysia
- Application of Ice Thermal Storage System and Benefits for Use in Air Conditioning Mr C. Yoo & Mr Kish Kim Wang, Curtin University, Malaysia
- Variable Speed Drives for Application in HVAC System Mr Andrew Cooper, Queensland Australia
- US Federal Standard 209E for Clean Rooms - An Obsolete Document? Mr Lee Hui Chee, Singapore
- Energy Management and the Internet, Mr Alan Marston, Metronics, Singapore
- End of Day 1

Thursday, Sept 25th 2003 - Day 2

- 8:00 am Total Hydraulic Balancing - Speaker from IA Singapore/Hong Kong Saving Air Conditioning Energy with Dehumidification Mr Frank Doh, US
- CFD Modeling of Thermal & Ventilating Aspect in Commercial Buildings Dr Dip Marise, CSIRO Mtg & Co, Australia
- Heat Pumps for Effective Use of Renewable Energy Resources, Dr Abdesslem Hamrouni, University of Malaysia
- Beyond Refrigerant in Chen Zhun Leong, Immediate Past President, Association of Consulting Engineers, Malaysia
- The Importance of System Part Load Value in Evaluating Chiller Plant, Carol USA
- Design Principles of Displacement Ventilation, Speaker from TROX, Germany
- Thermal Energy Storage - Energy Tank System by Dr Yemin Hu via The Future of Industrial Refrigeration - A User's View, Mr Bob Ivers, Nestle
- Internet Based Building Automation by Mr Jho Must Johnson Control
- Variable Speed Technology in Chiller Application Mr D.K. Giam & Mr YL Kong, YORK, Malaysia
- End of Seminar

INTRODUCTION

In conjunction with the International Exhibition on Refrigeration, Air Conditioning, Heating & Ventilation (RAHV) Systems held from 23rd to 26th September 2003, a 3-day Seminar with the theme "Development in RAHV" will be organised.

A distinguished lecturer from ASHRAE (USA) as well as speakers from Suppliers, Manufacturers, Consultants, University Lecturer and End Users have been invited to present current state of the art technology in the air conditioning industry.

WHO SHOULD ATTEND

This is THE SEMINAR for all Consultants, Contractors, Designers, Building Owners, End Users, Government Agencies, Managers and Engineers who are interested in the latest development and energy efficiency saving methods in the air conditioning industry.

REGISTRATION FEE (inclusive of Seminar Material, Light Lunch & Refreshment)

	Early Bird	
	Before 29 th Aug 03	After 29 th Aug 03
Members of IEM/MASHRAE/MACRA	RM 450.00	RM 500.00
Non-Members	RM 550.00	RM 600.00

Attending participants are advised to send their registration as early as possible to avoid disappointment as seating is limited. The Registration Form should be completed and returned together with the fee, made payable to MALAYSIAN CHAPTER OF ASHRAE, and crossed amount payable only to the following address by 29th August 2003 (early bird rate) by 31st September 2003 (regular price).

MALAYSIAN CHAPTER OF ASHRAE
25, Jalan PJU 6, Taman Perindustrian Jaya, Kinross Jaya
47100 Petaling Jaya, Selangor
Tel: 503-7847 4149/503-7847 4061 Fax: 503-7847 4460
Email: mshc@comnet.my Contact Person: Ms. Jesse Ching

The fees paid are non-refundable but substitute participants will be accepted subject to payment being made before the closing date. However, if the above is involved and the attending participants failed to attend the seminar on the date(s) event the fee will have to be forfeited.



LARROBE UNIVERSITY
AUSTRALIA

Koh Ken Weng

Senior Lecturer and principal lecturer of a post graduate diploma program of Technology Management of the Australian Technological Education, Training and Research Authority

MASTERS OF BUSINESS ADMINISTRATION
(TECHNOLOGY MANAGEMENT)

Larrobe University Australia
Institute of Technology Management

Coordinator of the Institute of Technology Management and the Department of Technology Management

Coordinator of the Institute of Technology Management and the Department of Technology Management

Coordinator of the Institute of Technology Management and the Department of Technology Management

The Institution of Engineers, Malaysia

HALF DAY TALK
Application of Ice Thermal Energy Storage and Benefits for Use in Air Conditioning and HVAC System Components
Presented by Charles-Edouard B. G. G. G. G. G.

Time: 9:00 am - 12:00 pm
Venue: Putra World Trade Center, Kuala Lumpur

Registration Fee: RM 100.00 (including lunch and seminar material)

For more information, please contact the Institution of Engineers, Malaysia at Tel: 603-2071 2000

For more information, please contact the Institution of Engineers, Malaysia at Tel: 603-2071 2000

For more information, please contact the Institution of Engineers, Malaysia at Tel: 603-2071 2000

For more information, please contact the Institution of Engineers, Malaysia at Tel: 603-2071 2000

For more information, please contact the Institution of Engineers, Malaysia at Tel: 603-2071 2000

浙江省经济贸易委员会
浙江省发展和改革委员会
浙江省科学技术厅
浙江省财政厅 文件
浙江省建设厅
浙江省旅游局
浙江省电力工业局

浙经管发〔2005〕298号

关于印发加强节约用电工作实施意见的通知

各市经委（经委、贸易委）、计委（计改委）、科技局、财政局、建设局、建管局、规划局、电力局、商检局等单位：
为进一步加强节约用电工作，缓解我省电力供需矛盾，促进我省经济和社会的协调发展，根据浙江省人民政府《关于加强节约用电工作的意见》（浙政发〔2005〕18号），现制定如下实施意见：

金华市能源管理及节能培训会议议程

时间	内容	主讲人	备注
9:00-10:00	报到		
10:00-11:30	1. 金华市能源管理现状与节能工作 2. 金华市能源管理工作的意义 3. 金华市能源管理工作的主要任务 4. 金华市能源管理工作的主要措施	全体参会人员	曹军斌
11:30-12:00	午餐		
13:00-14:30	1. 金华市能源管理工作的意义 2. 金华市能源管理工作的主要任务 3. 金华市能源管理工作的主要措施	全体参会人员	曹军斌
14:30-15:00	会议结束		

- 说明：
1. 会议地点：二楼会议室。
2. 就餐时间：午餐 11:30-12:00，晚餐 5:30。
3. 其他事项：501 房间。

2-day Workshop in Designing and Operating Efficient Air-Conditioning System

Meet Our Experts

- Dr. Yoon Kah
- Dr. Yoon Kah
- Dr. Yoon Kah

Workshops Overview

Who should attend

Date: 19-20 April 2004
Venue: Holiday Villa Subang

TECHNICAL SEMINAR - "Development in RAHV" 24th & 25th September 2003

In conjunction with the International Exhibition on Refrigeration, Air Conditioning, Heating & Ventilation Systems

Name of Organisation: _____
Address: _____
Tel: _____ Fax: _____

No.	Name(s)	Member of	M/tp No. / Grade	Registration Fees
				Total (RM)

Enclosed is a crossed cheque No _____ for the sum of RM _____ issued in favour of "MALAYSIAN CHAPTER OF ASHRAE" and crossed A/C payee only. I/We understand that the fee is not refundable if I/We withdraw after my/our application(s) is/are accepted by the Organising Committee but substitution of participants will be accepted. If I/We fail to attend the seminar, I/We will still settle the registration fee in full.

Contact Person: _____ Signature: _____
Designation: _____ Date: _____

"Development in Refrigeration, Air Conditioning Heating & Ventilation Systems" (RAHV)

In conjunction with the International Exhibition on RAHV on 23rd - 26th September 2003 at PWTC

Date: 24th & 25th September 2003
Venue: Putra World Trade Center, Kuala Lumpur
Time: 8.30 am - 5.15 pm

Supported by:

Building Services Technical Division
The Institution of Engineers, Malaysia

Technical Advisors:

- 1. Ir Yoo Soon Kah
- 2. Ir Prof. Dr. On Chue Sheng
- 3. Ir Chen Tsuan Leong
- 4. Dr Robert Ho

President, MASHRAE
Deputy President, IEM, FASHRAE
ASHRAE Advisor/Imm. Past President, ACEAM
ASHRAE, Taiwan Chapter

Ministry of Science, Technology & the Environment, Malaysia

VENDORS' RECOGNITION

November 21, 2015

DB

To: Mr. Yusoff
Managing Director
KENWISE SDN BHD
No. 27, Jalan Sungai 1/21K,
Bandar Alamraya Subang,
Subang Jaya 14100 Industrial Park,
40150, Selangor,
Malaysia

RE: APPOINTMENT AS DUNHAM-RUP DEALER

Reference is made to the above.

We are pleased to confirm our appointment as an authorized dealer for Dunham-Rup Air Conditioning & Services Sdn Bhd for Dunham-Rup air conditioning, ventilation and dehumidification products in Malaysia effective today. Dunham-Rup incurs one of the Air-Whisper Inverter 300i 3PC in market and the Dunham-Rup products comply to ISO9001:2008. We will provide full after sales support and standard warranty for 12 months and 100,000 hours for 10Y.

We are looking forward to successful long-term cooperation which will bring prosperity to both our companies.

Sincerely yours,

On behalf of Dunham-Rup Sales & Services Sdn Bhd

Tetyana Frohntseva
TETYANA FROHNTSEVA
Director

ACHIEVEMENT AWARD

DB

2019

Sales Achievement Award

for more than

RM 1,000,000

Presented to

KENWISE SDN BHD

LG

Authorized Business Partner

This is to certify that

KENWISE SDN BHD

is an Authorized Business Partner
in Malaysia
for the Chiller Products
manufactured by LG Electronics Inc.

Park-Y S
Yongsu Park
Vice President
Chiller Business Division
LG Electronics Inc.

Contract Number: C2015010989
Period of Validity: 3rd April 2015 to 2nd April 2017

SMART

Certificate of Appointment

This certifies that

KENWISE SDN BHD Sdn. Bhd.
72-19-01, Skudai Office Tower, Jalan Kempas 501/275,
52200 Bandar Sri Damansara, Wilayah Persekutuan Kuala Lumpur,
Tel: +60 (0)3-7942 1122 Fax: +60 (0)3-7945 1332

Is appointed as a

Smartt Chiller Group Regional Partner*

Validity until

31st Dec 2015

For

West Malaysia* (Excluding Penang)

Smartt Chiller Group is the world-wide leader in magnetic-bearing, oil-free chillers. Established in 1999 manufacturing Water Cooled and Air Cooled Chillers the Smartt Chiller Group offers the largest range of oil-free environmentally friendly, clever cooling solutions.

For and on behalf of the Smartt Chiller Group

Sam Ringwaldt
Sam Ringwaldt
Director - Asia Pacific

*This appointment is for the territories, jurisdiction, and region and support of Smartt Chiller Group range of chiller products in the specified region.
*For the exception of Sabah, Kuala Lumpur (KLU) or Kemeritiman (KEMERITIMAN) (KEM) island requires a license.

FUJIAIRE
Your World Made Cooler

Fujiaire Sales & Services Sdn Bhd
is pleased to appoint

KENWISE SDN BHD

as the authorised dealer for the sales and installation of
Fujiaire heating, ventilating & air-conditioning products.

Chief Executive Officer
Fujiaire Sales & Services Sdn Bhd

authorized
dealership
certificate

TOZEN

TOZEN (M) SDN BHD

DAIKIN

Panasonic

GREE

CERTIFICATE of DEALERSHIP

This certificate is proudly presented to

KENWISE SDN BHD

AS
AUTHORIZED AIR CONDITIONERS DEALER
for the year 2019-2020.

Director
EWEINGONG DAVID VINCENT LAM
DIRECTOR

TOZEN

TOZEN (M) SDN BHD

DAIKIN

Panasonic

COMPETITIVE ADVANTAGE

KENWISE is quantitatively & qualitative competitive, technically sound & knowledgeable, installation competent, site analytically skilled and total solution oriented, Our teams are fast, effective & efficient in urgent response to customers' emergency needs. Our pricing strategies are always kept up to date and in pace with latest market rates without compromising any good quality commitment to our valuable customers. The technology of system and products adopted and offered to the market is always contemporary and optimized to achieve the best possible desired outcome of the end users.

Optimized heat load design

We offer computerized heat load calculations and psychometrical design optimization to provide the most effective and competitive equipment selections.

Integrated Equipment Selection

Relationships are a gift because they greatly influence the exposure of our products and services.

Efficient and Prompt

Offers a market advantage that is more focused and alert to respond to urgent and emergency needs of the market

One Stop Responsibility

We offer products or services that are more unique or new to the market than our competitors.

Quality Control

The stringent policy upheld by KENWISE when implementing any projects ensure quality is controlled to the best possible extent and the successful rates are foreseeable to any customers.

Sincerity

Our strong commitment to serve the market is manifested well through our utmost sincere in providing our customers with the best and transparent services.

SUPER TEAM

KENWISE's key thrust of management team comprise the following members in charge of their respective portfolio and leading their respective departmental teams to execute the company's missions and support Bryan Koh achieve the overall company's vision in totality



Bryan Koh
Managing Director



Osmawi Yahya
Chief Operating Officer



Hiew Chee Seng
QS & CONTRACT SPECIALIST



Chooi Kam Foong
Senior Project Manager



Gee Yong Wei
Project Manager



Ray Cheah
Human Resource & Administrative Head

SUPER ESG TEAM TO SERVE MARKET

KENWISE inherently carries many good business core values of noble objectives to serve the market well up to the best of their ability. The ACMV spirit of full commitment inbuilt in the blood of our entire organization is always prepared to benefit our market and society to the best possible outcome. Our super ESG team is ever ready to drive our noble values to achieve the best results in Environmental, Social & Governance as a totality.



The Environment

KENWISE's environman continues strive to create awareness and drive the market towards achieving greenest environment possible by sharing all the best approaches in ACMV to save energy thru optimizing the integrated efficiency as a totality



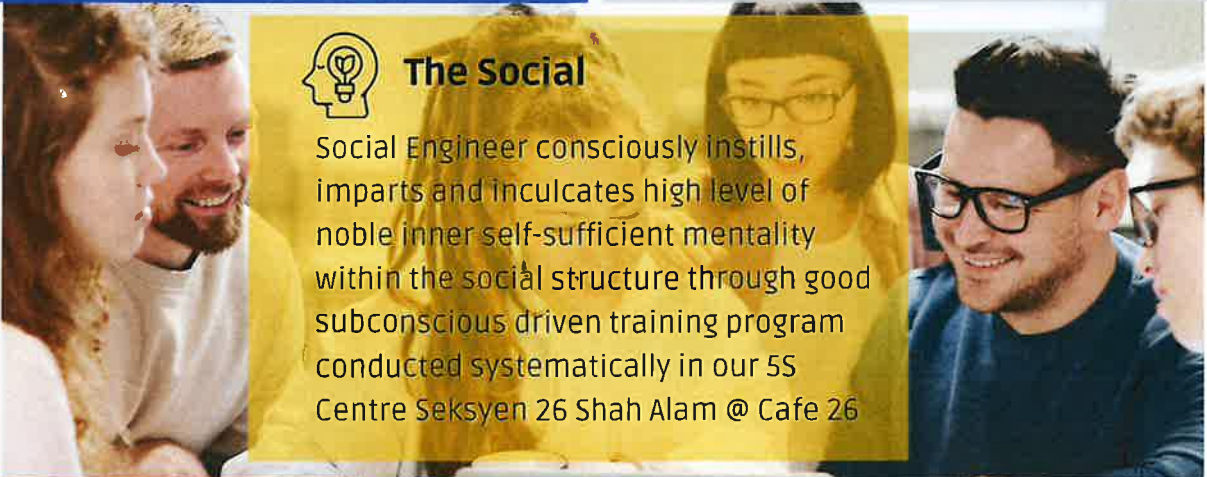
The Governance

Super Leadership strongly builds up abundant good leaders through valuable and informative seminars and talks at diverse professional platforms such as IEM, ASHRAE, MACRA, MasterBuilders and Universities. Good leadership is crucial to harmonize and nurture our market towards a productive society as a whole



The Social

Social Engineer consciously instills, imparts and inculcates high level of noble inner self-sufficient mentality within the social structure through good subconscious driven training program conducted systematically in our 5S Centre Seksyen 26 Shah Alam @ Cafe 26



Bryan Koh
Environman



Irfan Md Ghazaly
Social Engineer



Tee HH
Super Leadership



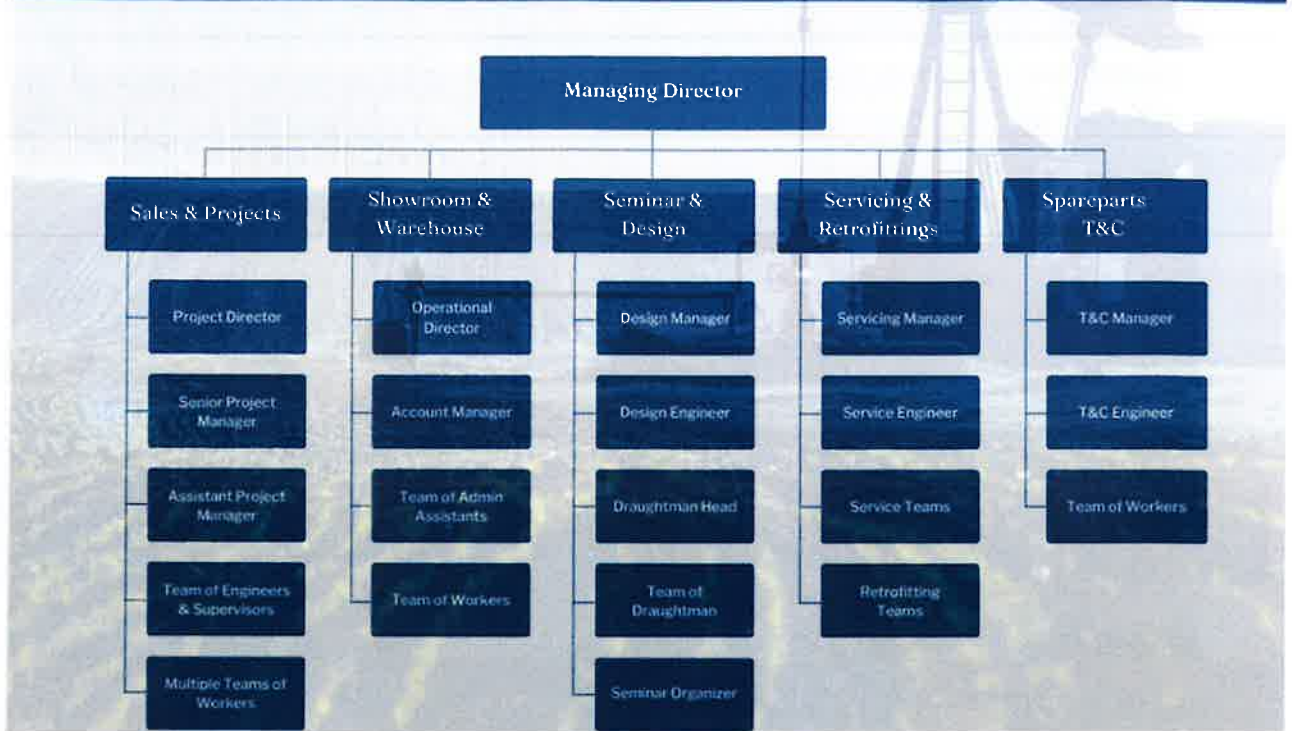
KENWISE SDN BHD Organization Chart

Overall Company
Portfolios

5S CENTER
FUNCTIONAL STRUCTURE

Operational
Heads

Date
30 JUN 2024



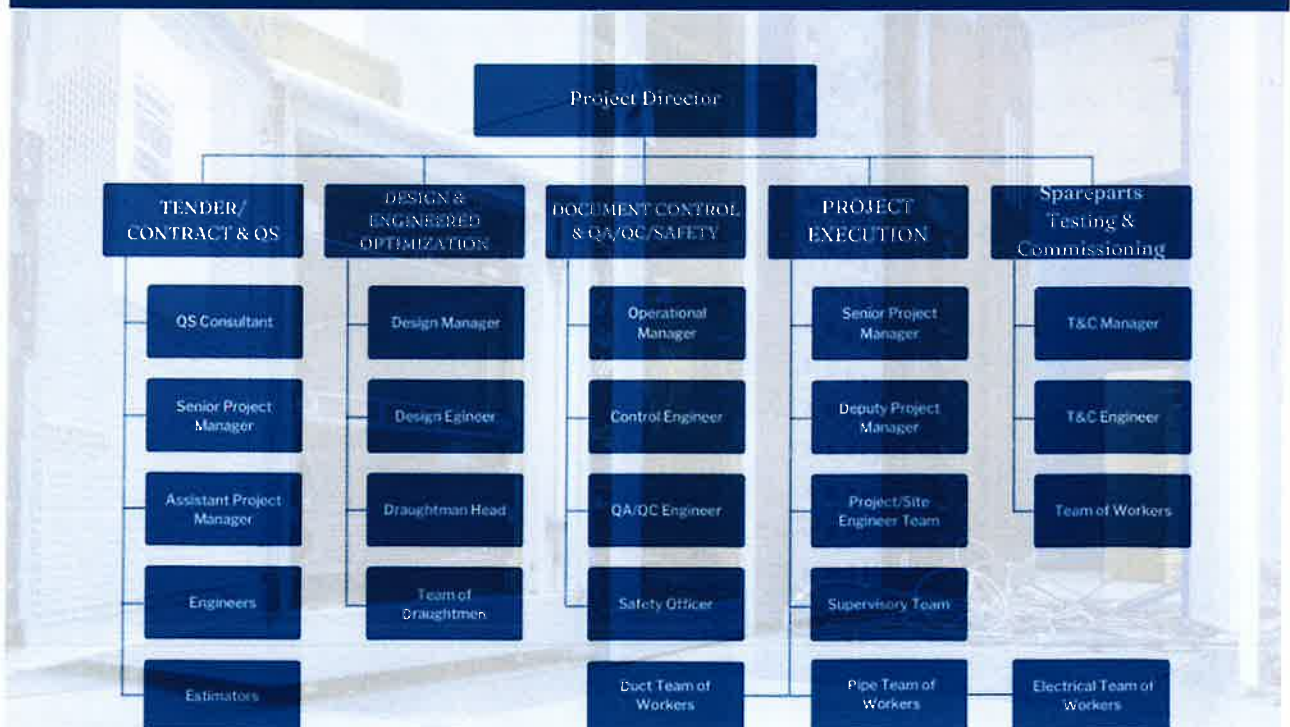
KENWISE SDN BHD Organization Chart

PROJECT MGMT
ORG CHART

SITES
FUNCTIONAL STRUCTURE

Operational
Heads

Date
30 JUN 2024





SITE MANPOWER CHART

Strong Site Manpower Key to Success

KENWISE's workforce strength and availability have been manifested clearly through our capability to employ skilled workers from all trades and categories. The unique business approach will help many projects to overcome urgent needs and follow contingency plan.



PROJECT MANAGER

Team Leader



QS/CONTRACT SPECIALIST



ADMIN/LOGISTIC OFFICER

QA/QC OFFICER

SITE ENGINEERS

SAFETY OFFICER

SUPERVISOR1

SUPERVISOR2

DUCTING TEAM FOREMAN & (20-50) WORKERS

PIPING TEAM FOREMAN & (20-50) WORKERS

ELECTRICAL TEAM FOREMAN & (20-30) WORKERS



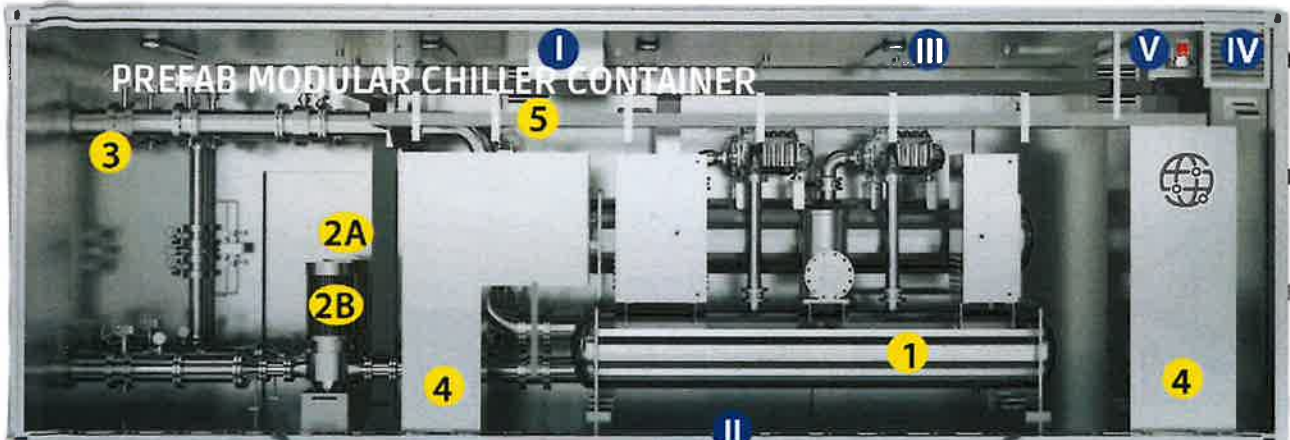


PREFABRICATION FACILITIES



Modular Chiller Package, Prefab Ductings and Pipings for fast track needs

KENWISE's ability to adapt to fast-track project implementation is manifested thru our track records to mobilize our prefab facilities ad hoc to the vicinity of the site location. The inherent strengths have been helping the company to increase a lot the productivities and complete many projects on time.



THANK YOU

Because, we're here to help

KENWISE will always endeavor to the best level to achieve .
Don't forget to thank the company for the opportunity and
convince related parties to support your company.

Address -ADMIN

T-19-08, 8TRIUM OFFICE TOWER, JALAN SD12/5, 52200 BANDAR
SRI DAMANSARA, KUALA LUMPUR WP

Address -OPERATION

NO.39, JLN SERENDAH 26/41, SEKITAR 26, SEKSYEN 26, SHAH
ALAM 40400 SELANGOR D.E.

Telephone

+6012 6616112 / 016 7381951

Website

www.kenwisesb.com