



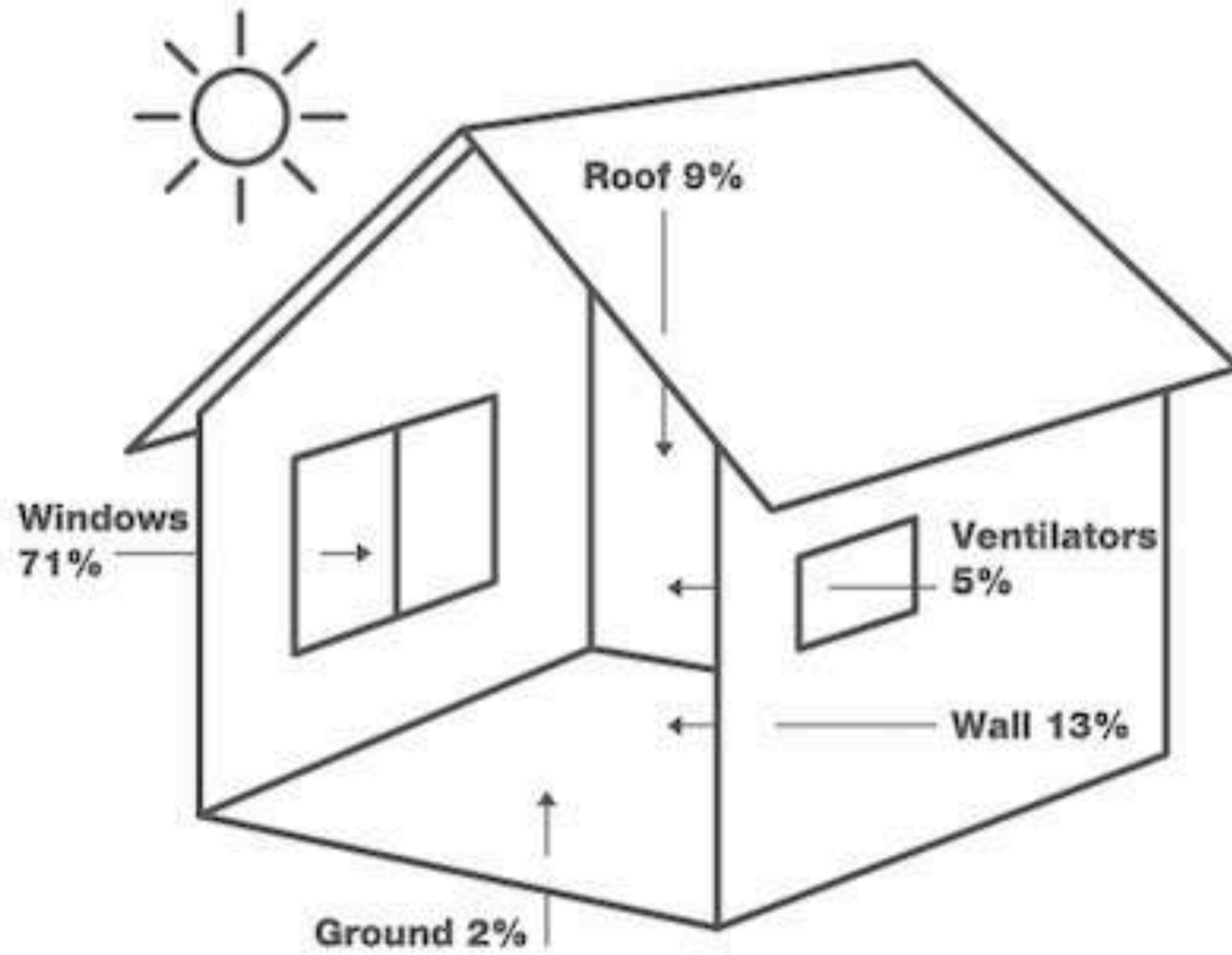
by AKEMIUCHI

TEXTURA

TEXTURA  
HEAT  
RESISTANT

**Effective heat resistance to keep homes cooler for longer**

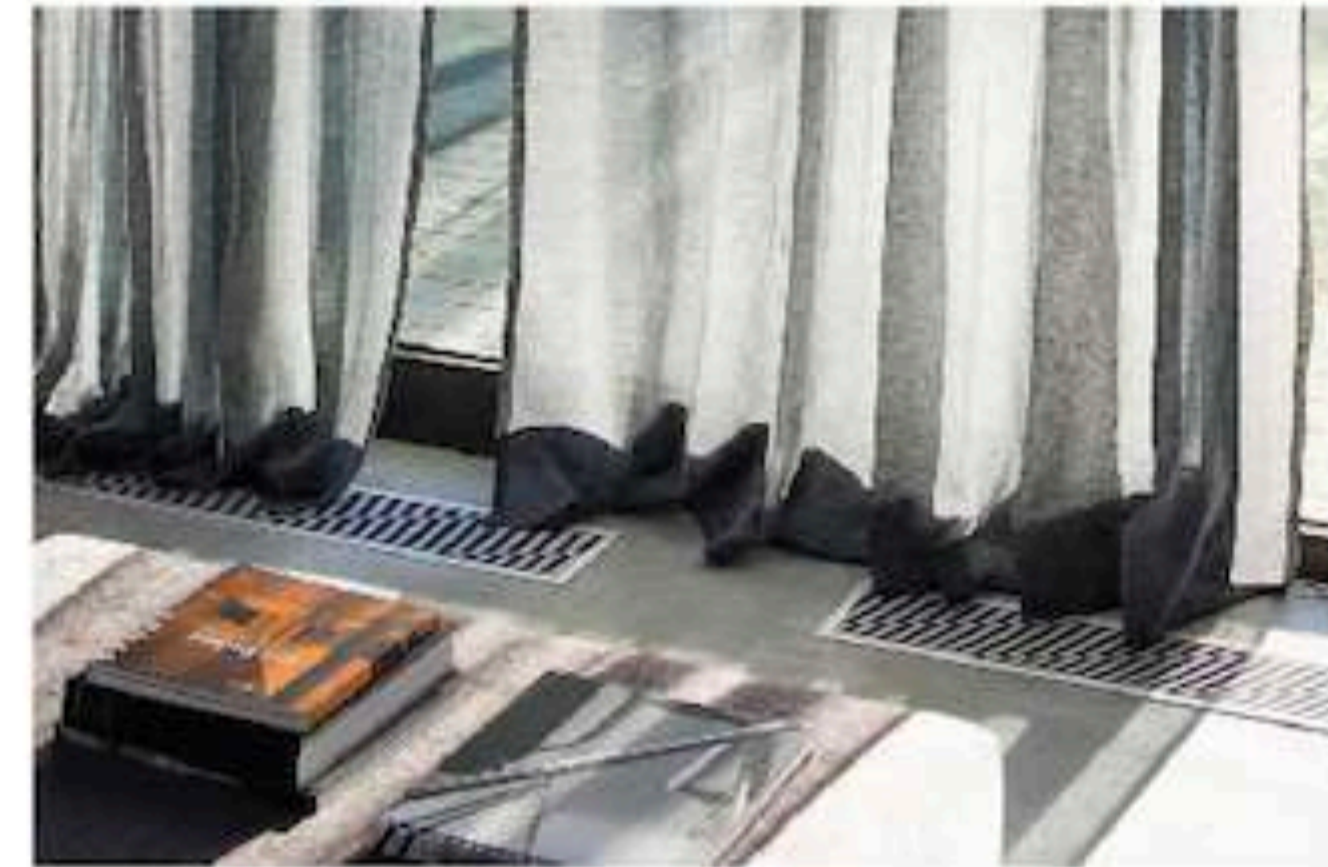
Vigorous sun exposure all year tends to cause some homes to struggle with excessive radiant heat. In addition, overly bright and heated homes may also result in constant disruption to daily comfort especially during sleep. To significantly increase home comfort and quality of living, a simple curtain that zones out excessive heat will do the trick. Keep homes cooler with the Textura Heat Resistant curtains as they effectively insulate your home from higher outdoor temperature while simultaneously blocking sunlight from entering home spaces.



**Where does heat in your home enter from?**

As homes are exposed to sunlight, heat can be transferred in through many ways. Prominently, windows contribute the biggest part to heat accumulation in conventional homes.

With the Textura Heat Resistant curtains in place, homes are kept in more comfortable temperatures as sunlight and excessive heat are blocked from entering home spaces.

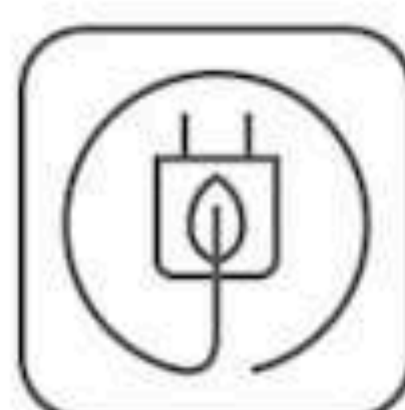


**Tips**

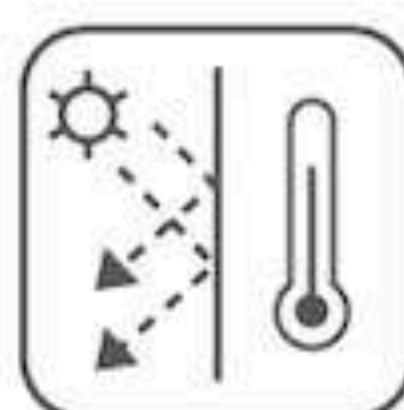
Keep curtains closed before the heat of the day to minimise any heat transfer into home spaces.

<p><b>At a Glance</b></p>	<p>Good thermal insulation to keep room temperatures comfortable</p>	<p>Efficiently blocks all ambient light from the outside</p>	<p>Reduces energy consumption cost</p>	<p>Reflects UV rays from entering the indoors</p>
---------------------------	--	--	--	---

**ATTRIBUTES**



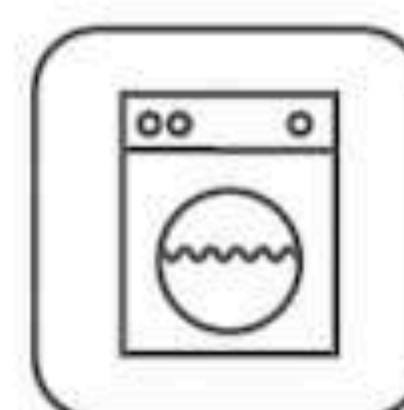
Energy Efficient



Thermal Insulation



Dim Out



Machine Washable



Fire Resistant

CODE GUIDE  
DIM OUT



by AKEMIUCHI

# TEXTURA

Width	320 cm
Composition	100% Polyester
Weight (GSM)	230
Colour & Design	4D6C

## TECHNICAL SPECIFICATIONS

PROPERTY	TEST METHOD	RESULT
Abrasion Resistances	ASTM D4966	40,000

## FASTNESS OF DYE

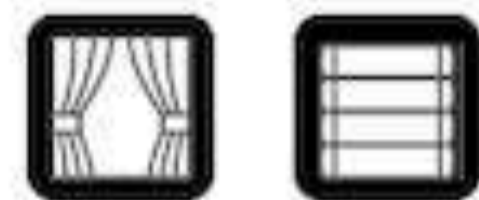
Light	AATCC 16	4.5
Rubbing	AATCC 8	4.5

## FR STANDARDS

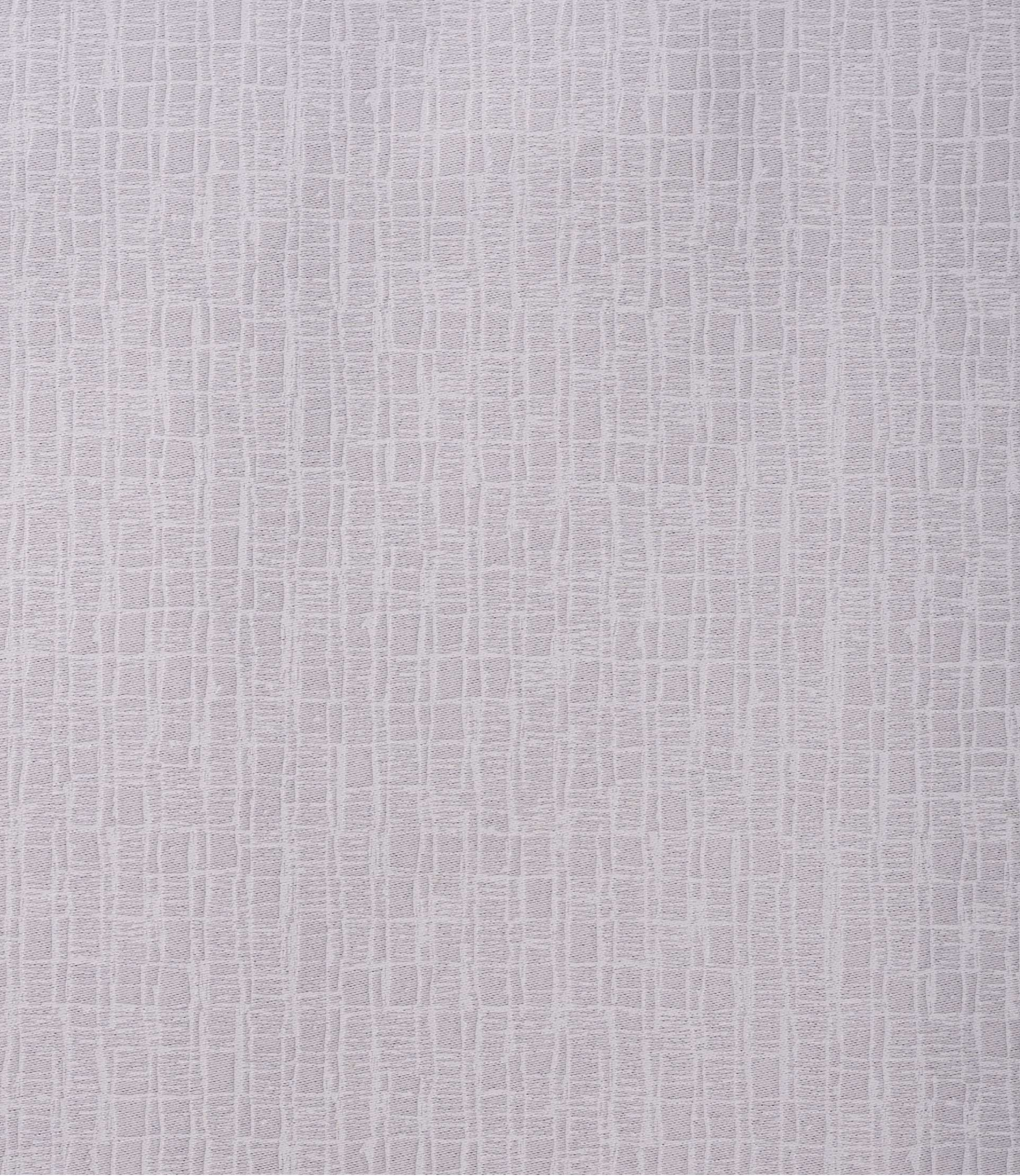
NFPA 701	Pass
NFPA 260 - Class 1	Pass
EN 1102	Pass
16 CFR 1610	Pass
CAL TB 117 - 2013 (Section 1)	Pass



## CARE INSTRUCTIONS



OEKO-TEX®  
CONFIDENCE IN TEXTILES  
**STANDARD 100**  
SHWO 097067 TESTEX  
Tested for harmful substances.  
[www.oeko-tex.com/standard100](http://www.oeko-tex.com/standard100)



### Textura KNIT 001 ROCKS

- Composition: 100% polyester
- Width: 320cm
- Weight: 230gsm
- Abrasion Resistances: 40,000 cycles
- Colour fastness to light passes AATCC 16
- Colour shades may slightly vary from dye-lot to dye-lot

### CODE GUIDE DIM OUT

ER STANDARDS  
Passed the following test:  
NFPA 701  
NFPA 260 - Class 1  
EN 1102  
16 CFR 1610  
CAL TB 117-2013 (Section 1)





## Textura KNIT 002 CHARCOAL GREY

- Composition: 100% polyester
- Width: 320cm
- Weight: 230gsm
- Abrasion Resistances: 40,000 cycles
- Colour fastness to light passes AATCC 16
- Colour shades may slightly vary from dye-lot to dye-lot



### CODE GUIDE DIM OUT

FR STANDARDS  
Passed the following test:  
NFPA 701  
NFPA 260 - Class 1  
EN 1102  
16 CFR 1610  
CAL TB 117-2013 (Section 1)



### Textura KNIT 003 GOBLIN BLUE

- Composition: 100% polyester
- Width: 320cm
- Weight: 230gsm
- Abrasion Resistances: 40,000 cycles
- Colour fastness to light passes AATCC 16
- Colour shades may slightly vary from dye-lot to dye-lot



### CODE GUIDE DIM OUT

ER STANDARDS  
Passed the following test:  
NFPA 701  
NFPA 260 - Class 1  
EN 1102  
16 CFR 1610  
CAL TB 117-2013 (Section 1)



### Textura KNIT 004 BUTTER CREAM

- Composition: 100% polyester
- Width: 320cm
- Weight: 230gsm
- Abrasion Resistances: 40,000 cycles
- Colour fastness to light passes AATCC 16
- Colour shades may slightly vary from dye-lot to dye-lot



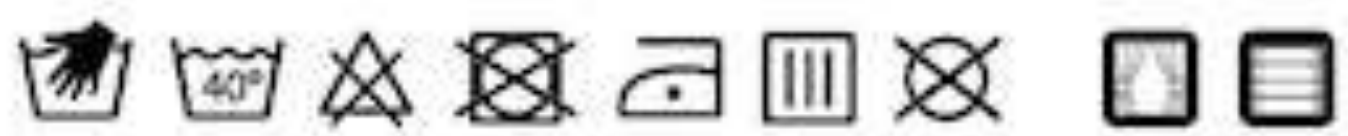
**CODE GUIDE**  
**DIM OUT**

**ER STANDARDS**  
Passed the following test:  
NFPA 701  
NFPA 260 - Class 1  
EN 1102  
16 CFR 1610  
CAL TB 117-2013 (Section 1)



**Textura KNIT 005 PIP**

- Composition: 100% polyester
- Width: 320cm
- Weight: 230gsm
- Abrasion Resistances: 40,000 cycles
- Colour fastness to light passes AATCC 16
- Colour shades may slightly vary from dye-lot to dye-lot



**CODE GUIDE  
DIM OUT**

**FR STANDARDS**  
Passed the following test:  
NFPA 701  
NFPA 260 - Class 1  
EN 1102  
16 CFR 1610  
CAL TB 117-2013 (Section 1)





## Textura KNIT 006 TAUPE

- Composition: 100% polyester
- Width: 320cm
- Weight: 230gsm
- Abrasion Resistances: 40,000 cycles
- Colour fastness to light passes AATCC 16
- Colour shades may slightly vary from dye-lot to dye-lot

### CODE GUIDE DIM OUT

FR STANDARDS  
Passed the following test:  
NFPA 701  
NFPA 260 - Class 1  
EN 1102  
16 CFR 1610  
CAL TB 117-2013 (Section 1)



## Textura REAP 001 CORN SILK

- Composition: 100% polyester
- Width: 320cm
- Weight: 230gsm
- Abrasion Resistances: 40,000 cycles
- Colour fastness to light passes AATCC 16
- Colour shades may slightly vary from dye-lot to dye-lot



### CODE GUIDE DIM OUT

FR STANDARDS  
Passed the following test:  
NFPA 701  
NFPA 260 - Class 1  
EN 1102  
16 CFR 1610  
CAL TB 117-2013 (Section 1)



**Textura REAP 002 ROSE TAN**

- Composition: 100% polyester
- Width: 320cm
- Weight: 230gsm
- Abrasion Resistances: 40,000 cycles
- Colour fastness to light passes AATCC 16
- Colour shades may slightly vary from dye-lot to dye-lot



**CODE GUIDE  
DIM OUT**

FR STANDARDOS  
Passed the following test:  
NFPA 701  
NFPA 260 - Class 1  
EN 1102  
16 CFR 1610  
CAL TB 117-2013 (Section 1)



**Textura REAP 003 WALL**

- Composition: 100% polyester
- Width: 320cm
- Weight: 230gsm
- Abrasion Resistances: 40,000 cycles
- Colour fastness to light passes AATCC 16
- Colour shades may slightly vary from dye-lot to dye-lot

**CODE GUIDE**  
**DIM OUT**

FR STANDARDS  
Passed the following test:  
NFPA 701  
NFPA 260 - Class 1  
EN 1102  
16 CFR 1610  
CAL TB 117-2013 (Section 1)





### Textura REAP 004 HIDDEN COVE

- Composition: 100% polyester
- Width: 320cm
- Weight: 230gsm
- Abrasion Resistances: 40,000 cycles
- Colour fastness to light passes AATCC 16
- Colour shades may slightly vary from dye-lot to dye-lot



### CODE GUIDE DIM OUT

**FR STANDARDS**  
 Passed the following test:  
 NFPA 701  
 NFPA 260 - Class 1  
 EN 1102  
 16 CFR 1610  
 CAL TB 117-2013 (Section 1)



**Textura REAP 005 GOBLIN BLUE**

- Composition: 100% polyester
- Width: 320cm
- Weight: 230gsm
- Abrasion Resistances: 40,000 cycles
- Colour fastness to light passes AATCC 16
- Colour shades may slightly vary from dye-lot to dye-lot

**CODE GUIDE  
DIM OUT**

ER STANDARDS  
Passed the following test:  
NFPA 701  
NFPA 260 - Class 1  
EN 1102  
16 CFR 1610  
CAL TB 117-2013 (Section 1)





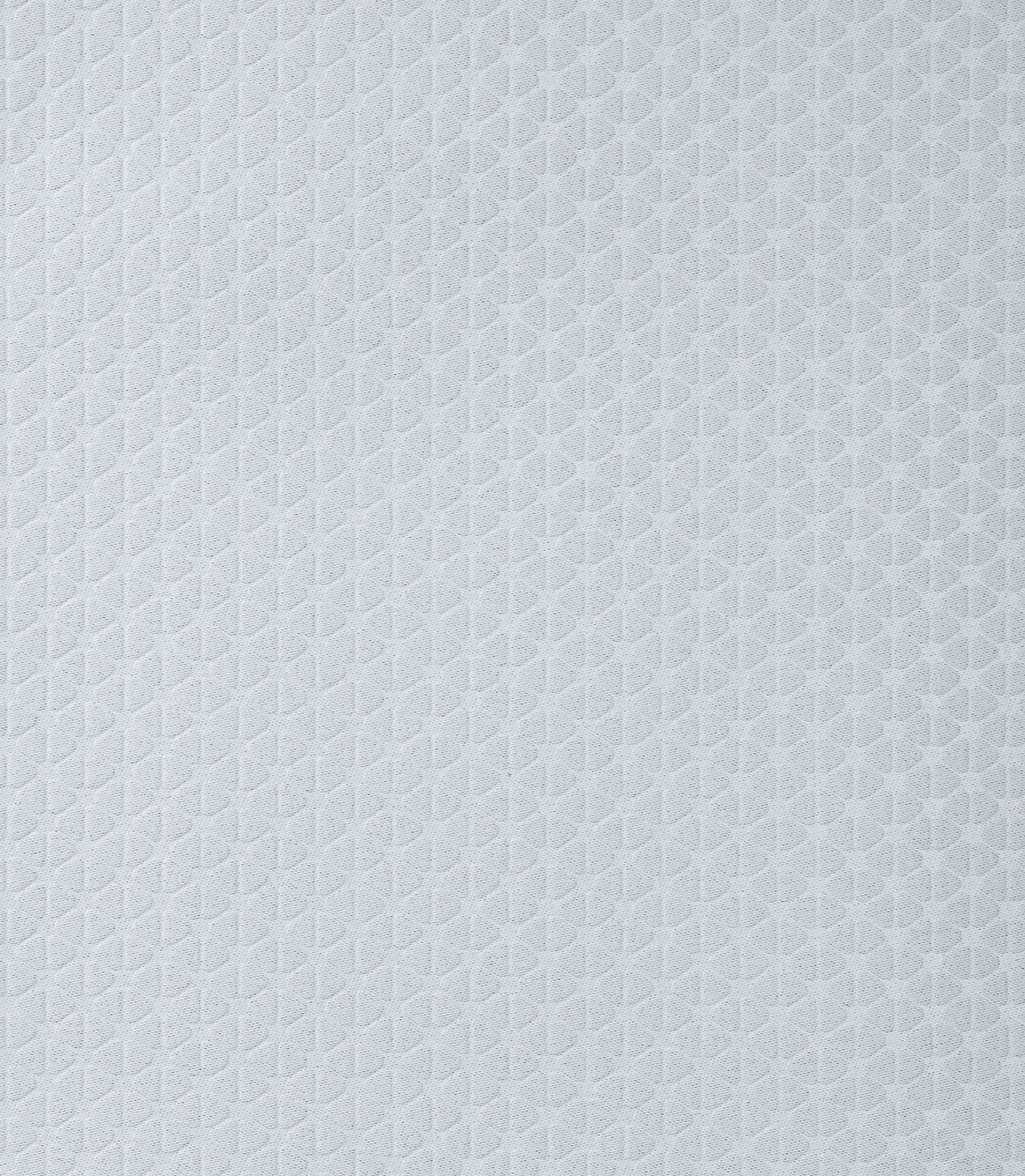
**Textura REAP 006 CHARCOAL GREY**

- Composition: 100% polyester
- Width: 320cm
- Weight: 230gsm
- Abrasion Resistances: 40,000 cycles
- Colour fastness to light passes AATCC 16
- Colour shades may slightly vary from dye-lot to dye-lot



**CODE GUIDE  
DIM OUT**

**FR STANDARDS**  
Passed the following test:  
NFPA 701  
NFPA 260 - Class 1  
EN 1102  
16 CFR 1610  
CAL TB 117-2013 (Section 1)

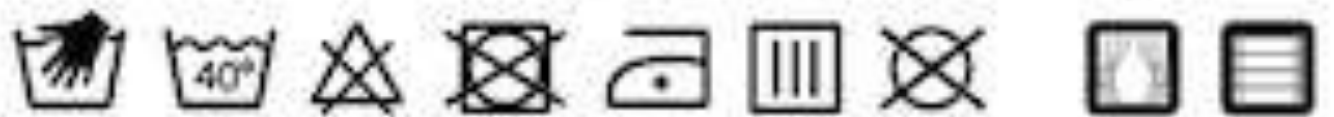


**Textura UNITY 001 AIRY BLUE**

- Composition: 100% polyester
- Width: 320cm
- Weight: 230gsm
- Abrasion Resistances: 40,000 cycles
- Colour fastness to light passes AATCC 16
- Colour shades may slightly vary from dye-lot to dye-lot

**CODE GUIDE  
DIM OUT**

**FR STANDARDS**  
Passed the following test:  
NFPA 701  
NFPA 260 - Class 1  
EN 1102  
16 CFR 1610  
CAL TB 117-2013 (Section 1)







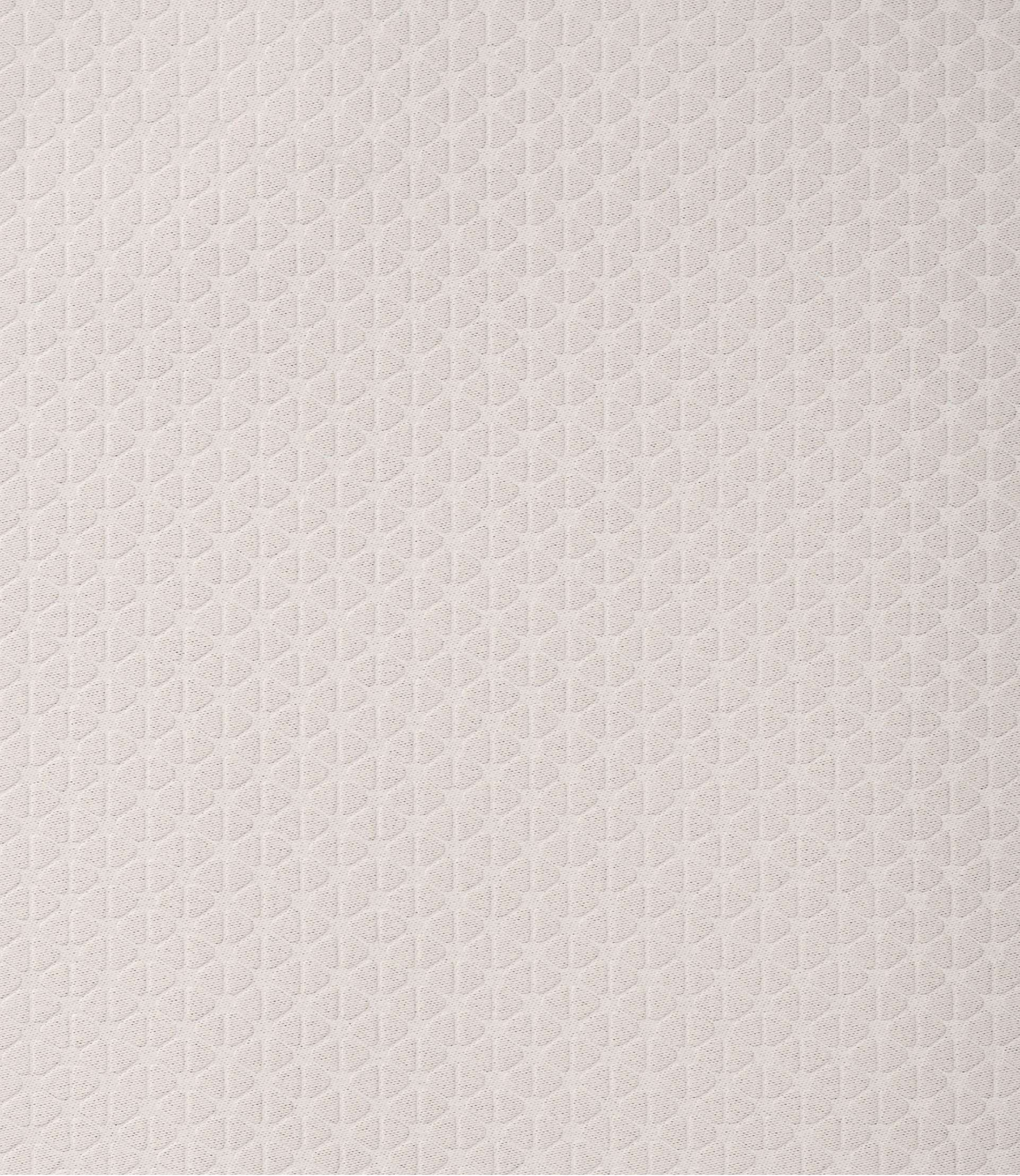
### Textura UNITY 002 CAPE

- Composition: 100% polyester
- Width: 320cm
- Weight: 230gsm
- Abrasion Resistances: 40,000 cycles
- Colour fastness to light passes AATCC 16
- Colour shades may slightly vary from dye-lot to dye-lot

### CODE GUIDE DIM OUT

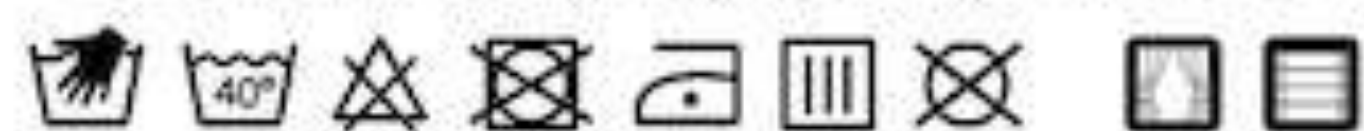
ER STANDARDS  
Passed the following test:  
NFPA 701  
NFPA 260 - Class 1  
EN 1102  
16 CFR 1610  
CAL TB 117-2013 (Section 1)





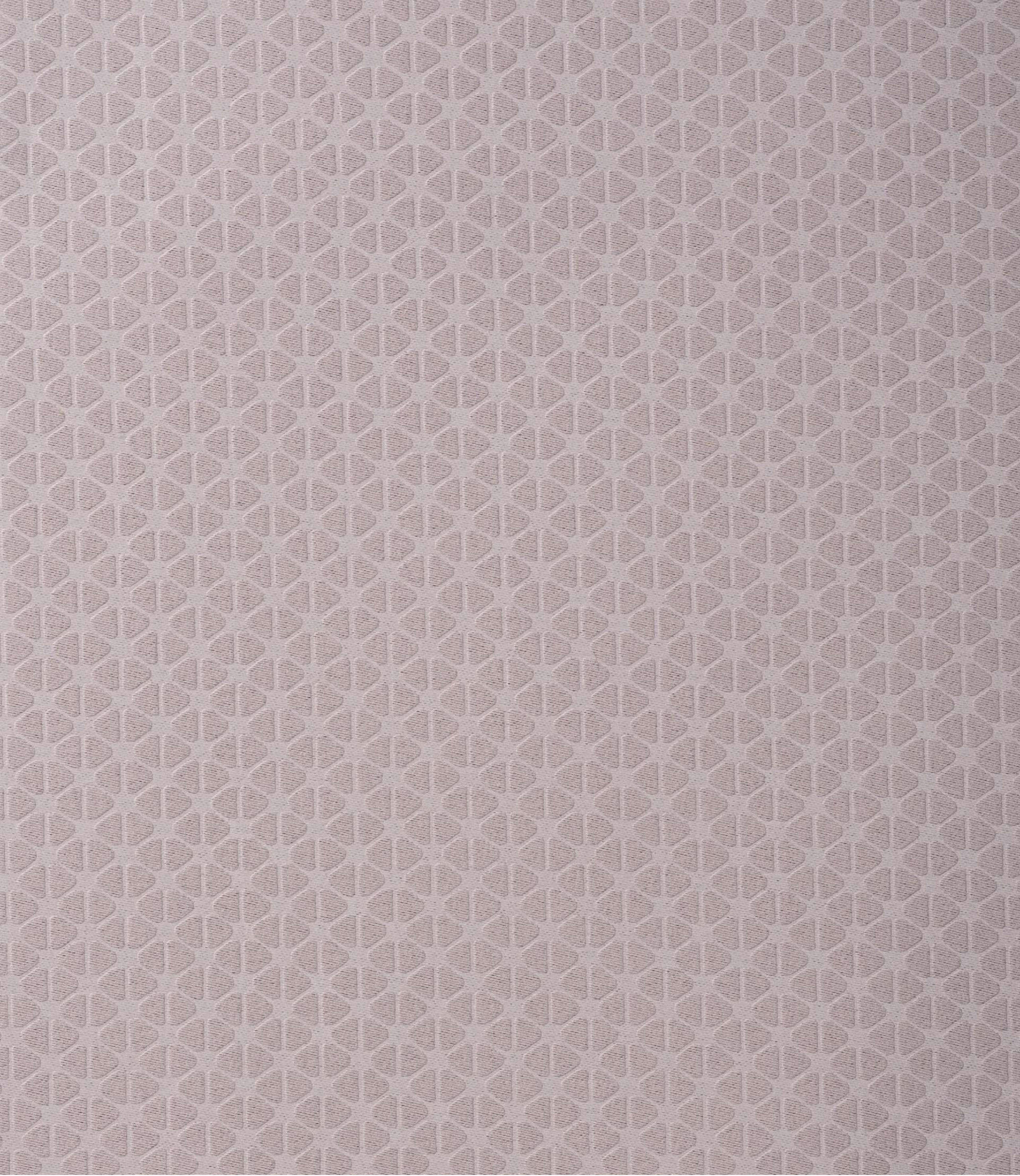
**Textura UNITY 003 REED CREAM**

- Composition: 100% polyester
- Width: 320cm
- Weight: 230gsm
- Abrasion Resistances: 40,000 cycles
- Colour fastness to light passes AATCC 16
- Colour shades may slightly vary from dye-lot to dye-lot



**CODE GUIDE  
DIM OUT**

FR STANDARDS  
Passed the following test:  
NFPA 701  
NFPA 260 - Class 1  
EN 1102  
16 CFR 1610  
CAL TB 117-2013 (Section 1)



### Textura UNITY 004 GREYHERB

- Composition: 100% polyester
- Width: 320cm
- Weight: 230gsm
- Abrasion Resistances: 40,000 cycles
- Colour fastness to light passes AATCC 16
- Colour shades may slightly vary from dye-lot to dye-lot



### CODE GUIDE DIM OUT

FR STANDARDS  
Passed the following test:  
NFPA 701  
NFPA 260 - Class 1  
EN 1102  
16 CFR 1610  
CAL TB 117-2013 (Section 1)





**Textura HAVEN 001 SHOJI WHITE**

- Composition: 100% polyester
- Width: 320cm
- Weight: 230gsm
- Abrasion Resistances: 40,000 cycles
- Colour fastness to light passes AATCC 16
- Colour shades may slightly vary from dye-lot to dye-lot



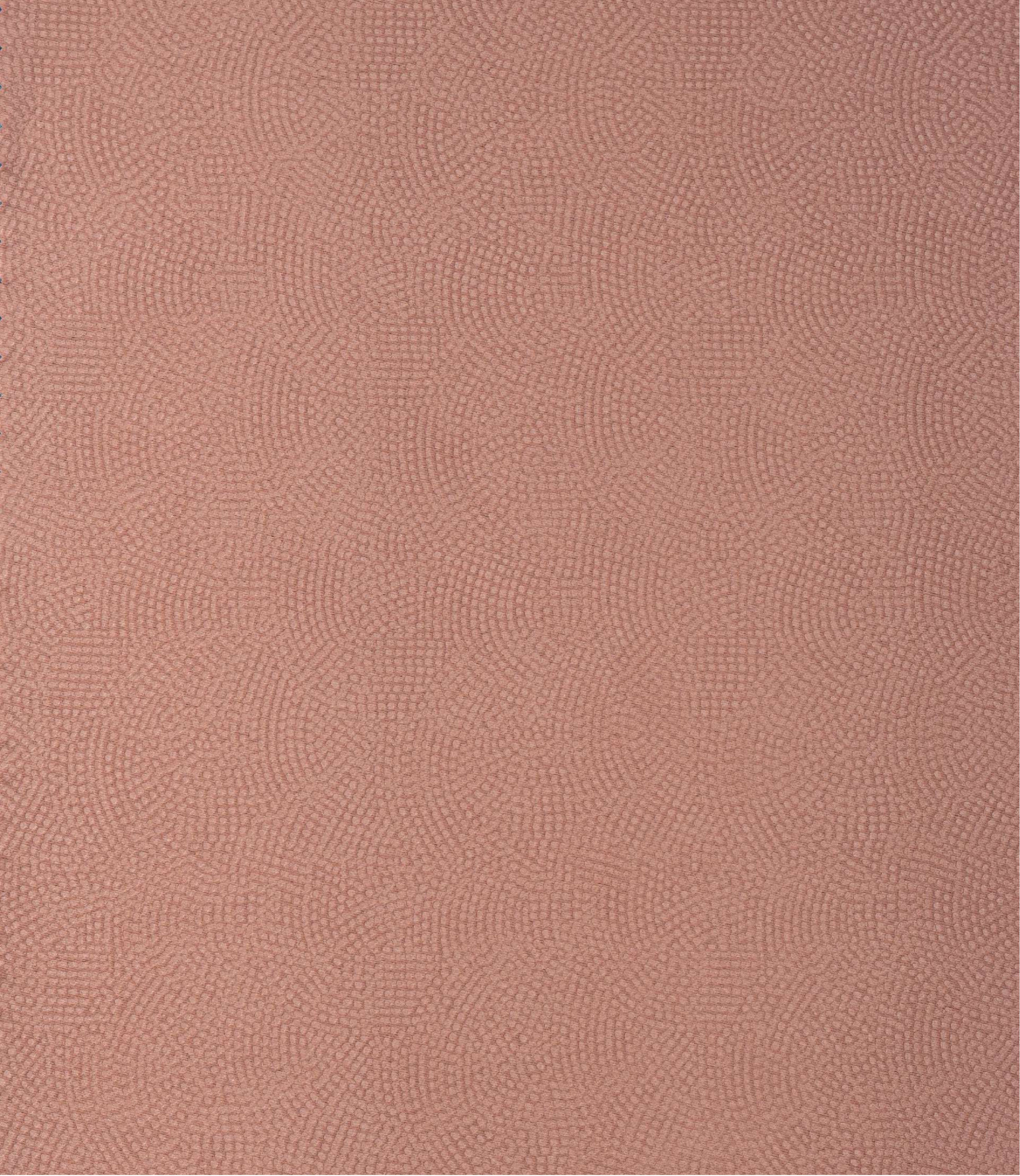
**CODE GUIDE  
DIM OUT**

**FR STANDARDS**  
Passed the following test:  
NFPA 701  
NFPA 260 - Class 1  
EN 1102  
16 CFR 1610  
CAL TB 117-2013 (Section 1)









**Textura HAVEN 004 CHENNA BROWN**

- Composition: 100% polyester
- Width: 320cm
- Weight: 230gsm
- Abrasion Resistances: 40,000 cycles
- Colour fastness to light passes AATCC 16
- Colour shades may slightly vary from dye-lot to dye-lot



**CODE GUIDE  
DIM OUT**

**FR STANDARDS**  
Passed the following test:  
NFPA 701  
NFPA 260 - Class 1  
EN 1102  
16 CFR 1610  
CAL TB 117-2013 (Section 1)



**Textura HAVEN 005 TEMPO TEAL**

- Composition: 100% polyester
- Width: 320cm
- Weight: 230gsm
- Abrasion Resistances: 40,000 cycles
- Colour fastness to light passes AATCC 16
- Colour shades may slightly vary from dye-lot to dye-lot



**CODE GUIDE  
DIM OUT**

**FR STANDARDS**  
Passed the following test:  
NFPA 701  
NFPA 280 - Class 1  
EN 1102  
16 CFR 1610  
CAL TB 117-2013 (Section 1)



### Textura HAVEN 006 MULBERRY PURPLE

- Composition: 100% polyester
- Width: 320cm
- Weight: 230gsm
- Abrasion Resistances: 40,000 cycles
- Colour fastness to light passes AATCC 16
- Colour shades may slightly vary from dye-lot to dye-lot



### CODE GUIDE DIM OUT

FR STANDARDS  
Passed the following test:  
NFPA 701  
NFPA 260 - Class 1  
EN 1102  
16 CFR 1610  
CAL TB 117-2013 (Section 1)