

FS-0120

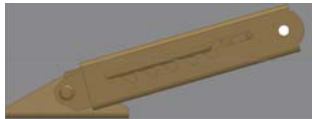


FT-0110

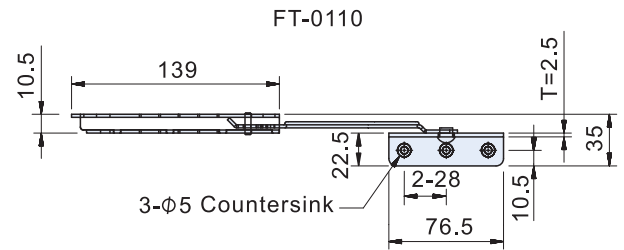
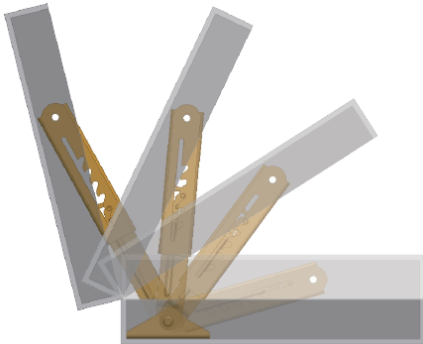


箱體關閉側視圖

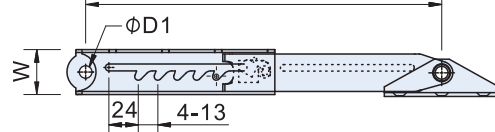
A schematic side view when shut the box.



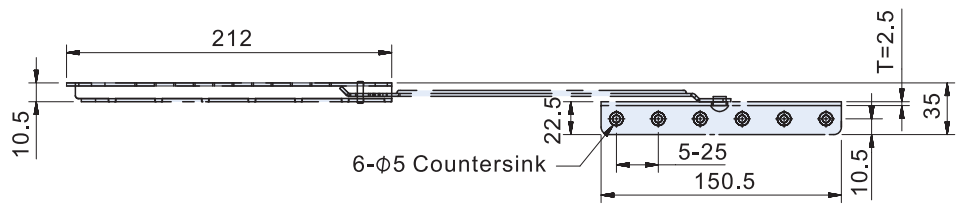
開啓時定位，關閉時拉到底再閉合  
Pulls upwards to the end when the cover closes, then it closes downward.



L1定點最長 L2定點最短 L3閉合長  
The longest L1: positioning stage L2: positioning stage L3: Closed length

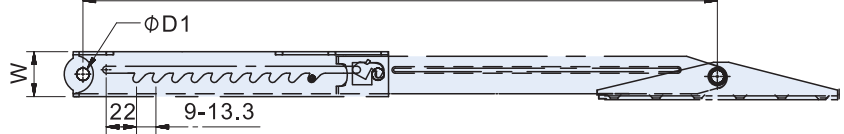


FT-0120



L1定點最長 L2定點最短 L3閉合長

The longest L1: positioning stage L2: positioning stage L3: Closed length



用途

適用開門方式：上開

APPLICATION

Door opening manner: Upward opening.

特徵

- FT-0110、FS-0110：五段式定位。
- FT-0120、FS-0120：十段式定位。
- 開啓時能五段和十段開定位，關閉時一次拉到底再閉合。

FEATURES

- FT-0110、FS-0110：5 positioning stages.
- FT-0120、FS-0120：10 positioning stages.
- Circulating operation procedure, easy to operate. (Open stage by stage → Fully opened → Close)
- Close only after fully opened.

SPECIFICATIONS

Unit:mm

產品編號 Item No.	材質 Material	表面處理 Finish	尺寸 Dimensions					荷重 Loading capacity (kg/pcs)	重量 Weight(g)
			L1	L2	L3	W	D1		
FT-0110	SPCC	五彩 Chromic acid passivated	214	164	140	30	6.5	58	245
FT-0120			355	235	213	30	6.5		397
FS-0110	SUS304	亮面 Vibration ground	214	164	140	30	6.5		245
FS-0120			355	235	213	30	6.5		397