

| 7 | Spring Washer | Carbon Steel | ばね座金 | SWRH | 4 |
|-----|---------------|-------------------|-------|--------------|------|
| 6 | Nut | Carbon Steel | 六角ナット | S25C or S45C | 4 |
| 5 | Bolt | Carbon Steel | 六角ボルト | SCM435 | 4 |
| 4 | Gasket | Non-Asbestos | ガスケット | Non-Asbestos | 4 |
| 3 | Glass | Tempered Glasses | ガラス | 強化ガラス | 2 |
| 2 | Cover | Ductile Cast Iron | ふた | FCD450 | 2 |
| 1 | Body | Ductile Cast Iron | 本体 | FCD450 | 1 |
| No. | Name of Parts | Material | 部品名 | 材質 | Q.TY |

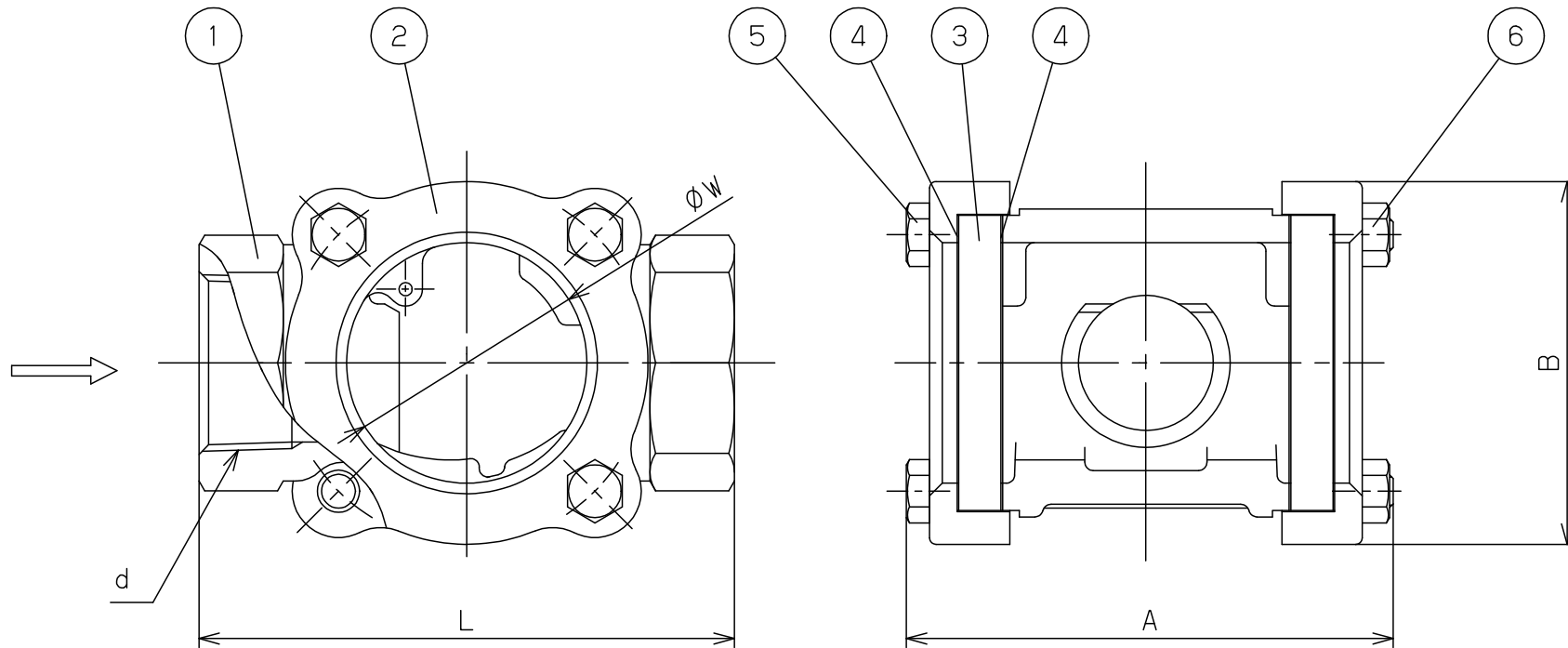
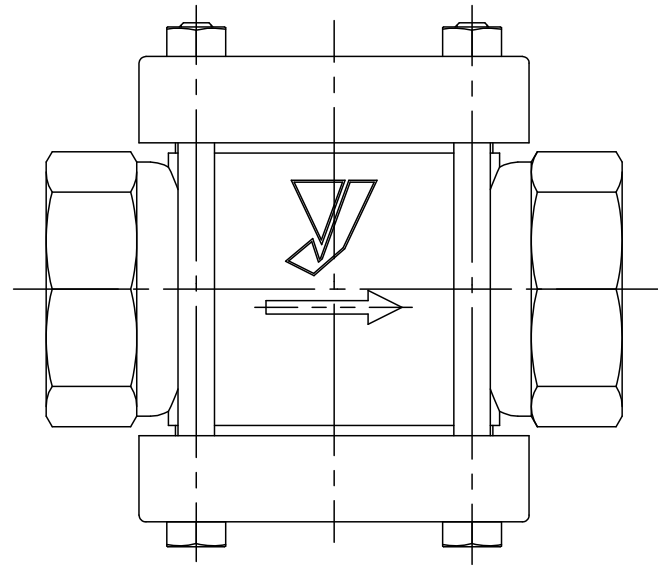
| (mm) | | | | | |
|------|--------|-----|-------|----|------------|
| Size | d | L | A | W | Weight(Kg) |
| 15A | Rc 1/2 | 80 | 79.0 | 35 | 0.7 |
| 20A | Rc 3/4 | 90 | 79.0 | 35 | 0.8 |
| 25A | Rc 1 | 115 | 100.5 | 44 | 1.4 |

| Specification | |
|---------------|-----|
| Fluid | |
| Press. | MPa |
| Temp. | °C |

TYPE SL-1S SIGHT GLASS
サイトグラス

| | |
|-------------|-------------|
| Approval | M. Kume |
| Check | M. Kume |
| Drawing | Y. Aoyama |
| Drawing No. | Y-0829-6501 |
| Date | 1 JUL.2010 |





| | | | | | |
|-----|---------------|-------------------|-------|--------------|-------|
| 6 | Nut | Carbon Steel | 六角ナット | S45C | 4 |
| 5 | Bolt | Carbon Steel | 六角ボルト | SCM435 | 4 |
| 4 | Gasket | Non-Asbestos | ガスケット | Non-Asbestos | 4 |
| 3 | Glass | Tempered Glasses | ガラス | 強化ガラス | 2 |
| 2 | Cover | Ductile Cast Iron | ふた | FCD450 | 2 |
| 1 | Body | Ductile Cast Iron | 本体 | FCD450 | 1 |
| No. | Name of Parts | Material | 部品名 | 材質 | Q. TY |

| Size | d | L | A | B | W | Weight (kg) |
|------|----------|-----|-------|-----|----|-------------|
| 32A | Rc 1 1/4 | 127 | 120.5 | 86 | 57 | 2.1 |
| 40A | Rc 1 1/2 | 140 | 120.5 | 86 | 57 | 2.7 |
| 50A | Rc 2 | 162 | 147 | 114 | 73 | 5.2 |

| Specification | |
|---------------|-----|
| Fluid | |
| Press. | MPa |
| Temp. | ℃ |

TYPE SL-1S SIGHT GLASS
透視式サイトグラス

| | |
|-------------|---------------|
| Approval | H. Iwamoto |
| Check | M. Yoshida |
| Drawing | H. Okumura |
| Drawing No. | Y-829-6501-1A |
| Date | 7 SEP. 2012 |

