

ApeosPort-IV

5070

4070

3070



ApeosPort-IV 5070 / 4070 / 3070

Digital Black and White Multifunction Device

Raise your productivity. Reduce costs.

Stay secure



A better way to get work done

Engineered to make your workgroup more productive. The ApeosPort-IV 5070 / 4070 / 3070 series multifunction devices provide the right tools for the work you do every day, plus advanced capabilities that help you work smarter, cost-effectively and more securely.

The ApeosPort-IV 5070 / 4070 / 3070 series features an open architecture technology that enables personalised and customised document management solutions you can access right from the device's touch screen. These applications can leverage your existing infrastructure and databases, and meet your specific business challenges.

Features at a glance

- Print and copy speeds of up to 35 / 45 / 55 ppm to keep up with even the busiest environments
- Improve the way you work with full colour scanning
- Fax solutions available, including walk-up, Internet Fax and IP faxing
- Innovative 9-inch, colour user interface
- Open architecture technology enables personalised and customised document management solutions



1
Optional
Wing Table



3
Four 500-sheet paper trays
adjustable up to A3



4
Optional integrated
stapler finisher

Environmentally sound

The ApeosPort-IV 5070 / 4070 / 3070 series delivers cutting-edge reductions in energy consumption.



Low energy consumption. The ApeosPort-IV 5070 / 4070 / 3070 series consumes less power in standby, low power and operating modes, resulting in greater energy savings in the office.

Smart Energy Management Technology. Our innovative new Smart Energy Management Technology better manages energy usage by only using what is necessary, when it's necessary. With this new technology, the user interface is ready in just 2 seconds. It's all about using energy only when it's needed – but retaining convenience too.

Power LED Scanner. The LED technology used as the light source for image scanning consumes less energy and gives you ultra-quiet operation.



5

Choose basic features like staple and hole punch (optional), or advanced capabilities to produce saddle-stitched booklets (unfolded)

6

2,000-sheet A4 High Capacity Feeder (optional) can increase total capacity to 5,050 sheets

7

High Capacity Tandem Tray holds up to 3,000 sheets

8

This high performance finisher features automatic stapling, hole-punching, folding and booklet making.

Optimised office efficiency

The highly modular ApeosPort-IV 5070 series multifunction devices give today's fast-paced office environments a critical productivity advantage. The tasks you perform daily become more efficient, while intensive workplace processes are optimised with customisable workflow solutions that easily handle your unique business requirements.

Dramatically increase your workflow efficiency. Cutting-edge scanning functionality opens the door to better ways of getting work done. Scan to Email quickly distributes documents to multiple email addresses. Store files on the device, or in a personal directory. You can also scan documents to network folders, FTP sites and fax servers right from the device.

Scan to Folder feature allows you to scan to a folder on the printer's hard drive to reprint on demand or retrieve via a web browser. Documents stored on the hard drive are displayed as thumbnails and up-close previews on the device touchscreen.

Easy archiving, organising and searching. With scan to searchable PDF*, you can create a fully text-searchable file and integrate it into your workflow process in one easy step.



*Optional Searchable PDF Kit is required

Significantly smaller scan files. The latest scan-export compression technologies reduce traffic on the network and accelerate document delivery.

Introduce new workflows or automate repetitive processes within the office environment by automatically routing documents to predefined locations at the touch of a button.

The speed you need. With ultra-fast copying and printing — choose from 35 ppm up to 55 ppm — there's more than enough speed to meet the needs of any busy department or workgroup.

Multitasking mastery. Scan a job while another job prints. Send a fax while making copies. The powerful 1.2 GHz Freescale processor concurrently processes all jobs received, and performs multiple tasks simultaneously.

9-inch, colour touch screen interface. Provides the comfortable look and feel Fuji Xerox is known for and features bright, intuitive icons and easy access to all major functions directly from the home screen.

Less user intervention means less downtime. More efficient toner lasts longer and can be replaced quickly by any user.

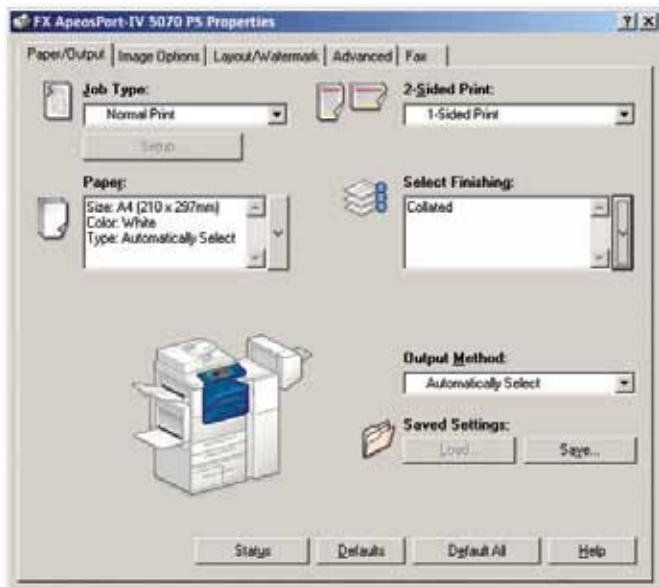
Advanced copy and print features. Plenty of support for specialised print applications, such as Annotation, Bates Stamping, ID Card Copy and tab print capability.

Walk-up simplicity. Print from and scan to any USB memory device for faster document delivery when you're not at your computer.



To speed up copying and faxing an express (simple) copy and fax feature is available that displays only the basic settings. This is provided in addition to the normal features.

WHQL certified PCL and PostScript print drivers* provide a consistent, easy-to-use interface for end-users that can greatly simplify your printing operations.



*WHQL certified drivers will be available from the end of August 2011.

A truly universal print driver. Xerox Global Print Driver® lets IT administrators install, upgrade and manage Fuji Xerox and non-Fuji Xerox devices from a single driver. It provides a consistent, easy-to-use interface for end-users, reducing the number of support calls, and simplifying print services management.

Customise your print driver settings for economy and efficiency. For example, set two-sided printing or choose N-up for printing multiple pages on a single sheet as your default.

Save time by storing the settings of frequently printed documents as favourites in your print driver. Settings include paper sizes, covers, duplexing, finishing and more.

Extensive fax capabilities. Network server fax enablement, Internet fax enablement (to avoid long distance charges), walk-up fax with LAN fax and IP faxing. With fax forward to email feature, incoming faxes can be automatically routed to any valid email address, device folder or network folder to save paper and speed retrieval.

IP faxing or FoIP offers a more cost efficient way of doing business. Faxes are sent and received through an IP-based network such as the internet. Faxes can be routed directly to an email account to conserve on energy and paper.



- 1
USB memory slot (optional)
- 2
Menu button
- 3
9" colour user interface
- 4
Authentication button
- 5
Status display LEDs
- 6
Power-saving button
- 7
Main power LED

Reporting and management tools

CentreWare™ Internet Services software makes it easy for administrators to configure the device, upload address books, monitor usage and consumables remotely and establish auditing capabilities.

Manage colour printing to minimise costs. Control costs by nominating when colour could be used and by whom. This ensures that colour is available to those individuals who truly leverage its power - such as the sales teams and marketing department.

Driverless printing for remote users with CentreWare Internet Services web utility. Any connected computer can immediately output PDF, TIFF and PRN files from any network computer, without using a print driver at all.

Device Setup Tool allows for simplified device configuration and administration, and lets you easily clone configurations to other similar devices on the network.



Security at every level

Secure Print helps prevent unauthorised viewers from seeing documents by holding jobs in the print queue until the user is authenticated.

Image Overwrite security feature clears or “overwrites” all trace of any document image data remaining on the hard drive after a print, copy, scan or fax job (when enabled).

Hard disk encryption helps ensure that unauthorised users can't access stored documents.

IPv6 support includes full enablement of the new IPSec standard.

An internal firewall provides an additional measure of security, providing IP filtering, domain filtering and port blocking.

Network authentication restricts access to scan, email and network fax features by validating user names and passwords before use. Audit Log capabilities let you know who sent what, when.



Extending your capabilities with Apeos Solutions

The transfer of knowledge, data and communication of information is critical to the efficiency and productivity of business today. The office employee also demands true 'ease of use' to ensure this knowledge is distributed efficiently and securely within the business.

Image Gateway for Apeos is the platform delivering integrated office solutions and provides additional capability to enhance your Enterprise productivity, security, streamline processes and reduce costs. Capabilities include: Cost Recovery, Secure Device Authentication via Card ID, Scanning directly into Enterprise Content Management Systems, Rules & Routing, Secure Fax and Workflow.

Cost Recovery – ACCRU

- Secure Release via Card ID/PIN and Cost Recovery of all Print, Copy, Scan and Fax jobs
- Disburse and control print related costs to users / departments and cost centres
- Enterprise level reporting
- Active Directory authentication and SSL Encryption to ensure security

Scan to and print from EDMS

- Tight integration to supported ECM systems with search capabilities providing process improvements and security
- Consolidation of document storage and retrieval
- Collaboration, create, share and review content
- Streamline resource intensive processes with the ability to preview and retrieve documents via the user interface

Image and data capture

- Support for batch scanning (including blank page recognition)
- Extended output file formats and destinations such as Word, Excel and high compression PDF
- Minimise information leakage through MyFolder and MyEmail

Fax communication

- Access the internal fax server module of or connect to the external RightFax server (including support for FoIP)
- Desktop faxing capability
- Follow me faxing (available with ACCRU)



Specifications of ApeosPort-IV 5070 / 4070 / 3070 Series

Copy Function

	ApeosPort-IV 5070	ApeosPort-IV 4070	ApeosPort-IV 3070
Type	Console type		
Memory	2 GB		
HDD	80 GB (Usable space: 40 GB)		
Scanning Resolution	600 x 600 dpi		
Printing Resolution	600 x 600 dpi		
Warm-up Time	30 sec or less (at room temperature 20 degrees C) 10 seconds or less (After exiting low power mode (at 20 C room temperature))		
Original Paper Size	Max: 297 x 432 mm (A3, 11 x 17") for both sheet original and book original		
Output Paper Size	Max: A3, 11 x 17" [For Bypass Tray, Max: A3, 11 x 17"] Min: A5 [For Bypass Tray, Min: Postcard (100 x 148 mm), Envelope (235.0 x 120.5 mm)]		
Output Paper Weight ¹	Tray 1: 60 to 105 gsm, Tray 2 to 4: 60 to 216 gsm, Bypass Tray/HCF: 60 to 216 gsm		
First Copy Output Time	BW: 3.1sec (A4 LEF)		
Continuous Copy Speed	55 ppm	45 ppm	35 ppm
Paper Tray Capacity	Standard: 1,095 sheets: 500 sheets x Tray 1 + 500 sheets (Tray 2) + 95 sheets (Bypass Tray) Optional: Two Tray Model: 2,095 sheets (500 sheets x 2 Tray + 500 sheets x 2 Tray + Bypass 95 sheets) Tandem Tray Model: 3,095 sheets (500 sheets x 2 Tray + 870 sheets x 1 Tray + 1,130 sheets x 1 Tray + Bypass 95 sheets) High Capacity Feeder (HCF): 2,000 sheets Maximum: 5,095 sheets: (Tandem Tray Model + HCF) 500 sheets x 2 Tray + Tandem Tray 2,000 sheets (870 + 1,130 sheets) + HCF 2,000 sheets + Bypass 95 sheets		
Output Tray Capacity	500 sheets		
Power Supply	AC 220 - 240 V, 8 A, 50/60 Hz		
Power Consumption	Maximum: 2.4 kW Sleep mode: 2.2 W or less Standby Mode: 140 W or less		
Dimensions	W 640 x D 693 x H 1,116 mm (With Duplex Automatic Document Feeder)		
Machine Weight	From 73 kg (Main body + Duplex Automatic Document Feeder)		

¹ Performance may vary for heavyweight, coated and special stocks.

Print Function (Optional)

Type	Built-in type
Print Resolution	1,200 / 1,200 dpi, 600 / 600 dpi
PDL	Standard: PCL6, PCL5, ESC/P(K), TIFF, HPGL/HPGL2, KS, KSSM, K55895, XPS, PDF, DocuWorks, Optional: Adobe® PostScript® 3™
Operating System	Standard: Microsoft® Windows® 2000, Microsoft® Windows® XP, Microsoft® Windows Server® 2003, Microsoft® Windows® XP Professional x64, Microsoft® Windows Server® 2003 x64, Microsoft® Windows Vista®, Microsoft® Windows Vista® x64, Microsoft® Windows Server® 2008, Microsoft® Windows Server® 2008 x64, Microsoft® Windows® 7, Microsoft® Windows® 7 x64, Microsoft® Windows Server® 2008 R2, Mac OS® X 10.5/10.6 Adobe® PostScript® 3™ Optional: Microsoft® Windows® 2000, Microsoft® Windows® XP, Microsoft® Windows Server® 2003, Microsoft® Windows® XP Professional x64, Microsoft® Windows Server® 2003 x64, Microsoft® Windows Vista®, Microsoft® Windows Vista® x64, Microsoft® Windows Server® 2008, Microsoft® Windows Server® 2008 x64, Microsoft® Windows® 7, Microsoft® Windows® 7 x64, Microsoft® Windows Server® 2008 R2, Mac OS® 9.2.2, Mac OS® X 10.3.9 - 10.4.11 (except 10.4.7), Mac OS® X 10.5/10.6
Connectivity	Standard: Ethernet 100BASE-TX/10BASE-T, USB2.0, Bidirectional Parallel IEEE1284-B) Optional: 1000BASE-T

Scan Function (Optional)

Type	Colour Scanner
Scanning Speed	BW: 70 ipm, Colour: 70 ipm
Scanning Resolution	600 x 600 dpi, 400 x 400 dpi, 300 x 300 dpi, 200 x 200 dpi
Connectivity	Standard: Ethernet 100BASE-TX/10BASE-T Optional: Ethernet 1000BASE-T
Scan Destinations	Scan to Folder, Scan to PC/Server (using FTP/SMB protocol), Scan to Email and Scan to USB

Fax Function (Optional)

Send Document Size	Max: A3, 11 x 17", Long documents (Max: 600 mm)
Transmission Time	Less than 3 seconds
Transmission Mode	ITU-T G3
No. of Fax Lines	PBX, PSTN, Maximum 3 ports G3-3 port

Duplex Automatic Document Feeder

Capacity	110 sheets		
Original Paper Size	Max: A3, 11 x 17", Min: A5		
Output Paper Weight	38 - 128 gsm (Duplex: 50 - 128 gsm)		
Feeding Speed (A4 LEF)	55 ppm	46 ppm	36 ppm

Descriptions in this material, product specifications and / or appearances are subject to change without prior notice due to improvements. Please note that the product colour appears differently from the actual colour as a result of properties of papers or printing ink. Windows and Windows NT are registered trademarks of Microsoft Corporation. NetWare is a registered trademark of Novell, Inc. in the United States. Macintosh, Mac OS and Ether Talk are trademarks of Apple Computer, Inc. PostScript is a registered trademark of Adobe Systems Incorporated in each country. HP-GL is a registered trademark of Hewlett-Packard Company. Other company names or product names are registered trademarks or trademarks of each company.

Spares for the standard configuration of installed machines is supported for up to 7 years from the date of the end of machine production.

For more information or detailed product specifications, call or visit us at

Fuji Xerox Australia 101 Waterloo Road,
Macquarie Park NSW 2113
Tel. (02) 9856 5000 Fax. (02) 9856 5003

13 14 12

<http://www.fujixerox.com.au>

Finisher-A1 (Optional)²

Paper Size / Paper Weight	Output Tray: A3, 11 x 17", Min: Postcards (100 x 148 mm), 60 - 216 gsm
Stacker Capacity	Output Tray: 500 sheets (A4) [Without Staples] A4: 2,000 Sheets, B4: 250 Sheets, A3 or larger: 200 Sheets, Mixed Size Stacking: 250 Sheets, [With Staples] 30 Sets
Staple	
Capacity	A4: 50 Sheets (Max 90 gsm), B4 or larger: 30 Sheets (Max 90 gsm)
Paper Size	Max: A3, 11 x 17", Min: B5 LEF
Position	Single (Front / Angled Staple)

² The optional Finisher-A1 cannot be installed on ApeosPort-IV 5070

Finisher-B1 (Optional)³

Paper Size / Paper Weight	Max: A3, 11 x 17", Min: B5, 55 - 216 gsm
Stacker Capacity	[Without Staple] A4: 2,000 Sheets, B4: 1,000 Sheets, Mixed Size Stacking: 300 Sheets, [With Staples] A4: 100 Sets or 1,000 Sheets, B4 or larger: 75 Sets or 750 Sheets, Booklet/Fold: 50 Sets or 600 Sheets, Fold: 500 Sheets
Staple	
Capacity	50 Sheets (Max 90 gsm)
Paper Size	Max: A3, 11 x 17" Min: B5 LEF
Position	Single (Front / Angled, Back / Straight), Dual (Parallel)
Punch	
Paper Size	A3, 11 x 17", B4, A4, A4 LEF, Letter (8.5 x 11"), Letter (8.5 x 11") LEF, B5 LEF
Number of Holes	2 Holes or 4 Holes, or US2 or 3 Holes
Paper Weight	60 - 200 gsm
Booklet Finishing	
Capacity	Booklet: 15 sheets, Fold: 5 sheets
Paper Size	Max: A3, 11 x 17", Min: A4, Letter (8.5 x 11")
Paper Weight	Saddle-Stapling: 64 - 80 gsm, Half-Folding: 60 - 105 gsm
Dimensions / Weight	W 643 x D 552 x H 942mm, 28 kg W 643 x D 597 x H 1,058mm, 37 kg (When the Booklet Maker Unit is attached)

³ The optional Finisher-B1 cannot be installed on ApeosPort-IV 5070

Booklet Finisher-C1 (Optional)

Paper Size / Paper Weight	Exit Tray: Max A3, 11 x 17", Min: B5, 60 to 216 gsm Finisher Tray: Max: A3, 11 x 17", Min: B5, 60 to 216 gsm Max: A3, 11 x 17", Min: B5, 60 to 105 gsm 500 Sheets (A4)
Stacker Capacity	Finisher Tray: [Without Staple] A4: 1,500 Sheets, B4 or larger: 1,500 Sheets, Mixed Size Stacking: 300 Sheets, [With Staple] A4: 200 Sets or 1,500 Sheets, B4 or larger: 100 Sets or 1,500 Sheets Booklet Tray: 20 Sets
Staple	
Capacity	50 Sheets Max. 90 gsm
Paper Size	Max: A3, 11 x 17", Min: B5
Position	Single (Front / Back / Angled), Dual (Parallel)
Punch	
Paper Size	A3, 11 x 17", B4, A4, A4 LEF, Letter (8.5 x 11"), Letter (8.5 x 11") LEF, B5 LEF
Number of Holes	2 / 4 holes (Option US 2 / 3 holes)
Paper Weight	60 to 169 gsm
Booklet Finishing	
Capacity	Saddle-Stapling: 15 Sheets, Half-Folding 5 Sheets
Paper Size	Max: A3, 11 x 17", Min: A4, Letter (8.5 x 11")
Paper Weight	Saddle-Stapling: 64 - 90 gsm, Half-Folding: 64 - 105 gsm
Dimensions / Weight	W 876 x D 639 x H 1,058 mm, 90 kg

High Capacity Feeder (Optional)

Paper Size / Paper Weight	A4 LEF, 8.5 x 11" LEF, B5 LEF, 56-216 gsm
Paper Capacity	2,000 sheets (80 gsm)
Dimensions / Weight	W389 x D610 x H380 mm, 29 kg

Customer Expectation Document (CED)

For detailed product specifications, optimum performance parameters and service clearances refer to the Customer Expectation Document.



Reproduction Prohibitions Please note that reproduction of the following is prohibited by law: Domestic and overseas bank notes and coins, government-issued securities, national bonds and local bond certificates. Unused postage stamps and post cards. Certificate stamps stipulated by law. The reproduction of works for copyright purposes (literary works, musical works, paintings, engravings, maps, cinematographic works, photographic works, etc.) is prohibited except when they are reproduced personally, at home or within limited range according to the above. This product is equipped with an anti-counterfeit feature. This feature is not intended to prevent illegal reproduction. Be extremely careful about the management of equipment used.



For Your Safe Use

Before using the product, read the Instruction Manual carefully for proper use. Use the product with an appropriate adequate power source and voltage displayed. Be sure to establish a ground. In the case of a failure or short circuit, an electric shock may result.

