



SUPER PRIMER F1

Multi-functional bonding coat/ primer/ water resistant sealer/ key coat

One-component, specifically design acrylic based primer. Multi-functional primer / water resistant sealer/ key coat to enhance bonding between various substrates such as plaster, renders, spray tiles, brick works, concrete, etc.

SUPER PRIMER F1 can act as a water barrier & a bonding agent on shear walls, concrete walls, etc.

FEATURES/BENEFITS

- ✓ Eco-friendly with Low VOC / Non-toxic formulation
- ✓ Water resistant
- ✓ Enhance bonding between concrete & plasters
- ✓ Reduces hollowness
- ✓ Reduces risk of plasters cracks
- ✓ Chemically & mechanically bonds subsequent plasters to concrete substrates

APPLICATION AREAS

- ✓ Concrete Walls
- ✓ Shear walls
- ✓ Floor screeds
- ✓ Exterior/interior wall plasters
- ✓ Lightweight blocks primer
- ✓ Cement/Gypsum board primer
- ✓ Primer for spray tiles, brick works



DRITECH CHEMICALS SDN. BHD. (1184082-K)

23-3A, Oval Damansara, 685, Jalan Damansara, 60000 Kuala Lumpur, Malaysia

TEL: +603 7735 6015, FAX: +603 7735 6016

Product Data

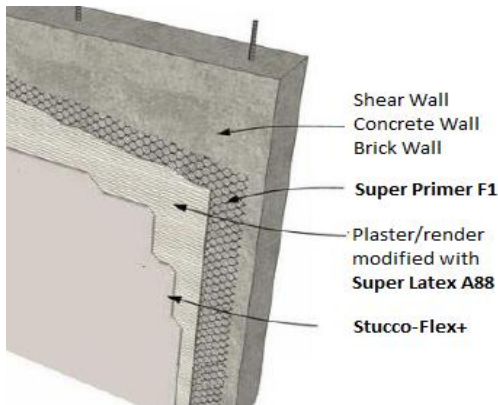
Appearances / Colors	Pink
Packaging	20kg Plastic pails
Storage	12 Months from date of production
Storage Condition	Dry conditions at Temperature between 5-35 Degree Celsius

Technical Data

Origin	Acrylics	
Specific Gravity	1.05 ± 0.05	
Solid Content	~ 45% ± 2%	
Service Temperature	+5°C to +80°C (High build system)	
Water Absorption	~ 0.2%	BS 1881: Part 122
Pull Off Strength	>1.0 N/mm ² (Standard condition)	EN 1348
Viscosity	75-80 KU	
Consumption	75-130 m ² /pail (Depends on substrate quality, flatness, absorption, etc.)	
Thinning	Max. 10% water	

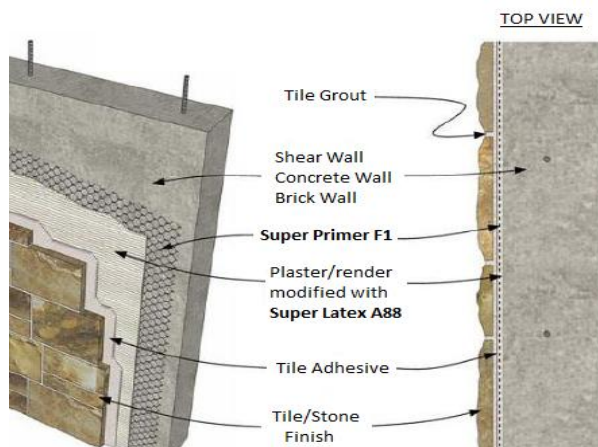
System Build Up

a) Flexible skim coat finish system



Steps	Descriptions
Substrate	Concrete, dry-wall, precast panel, bricks, light weight blocks, etc.
Primer	SUPER PRIMER F1
Plaster/Base Coat (Optional)	Premix render / site mix plaster with SUPER LATEX A88
Finish	Stucco-Flex+

b) Flexible skim coat finish system



Steps	Descriptions
Substrate	Concrete, dry-wall, precast panel, bricks, light weight blocks, etc.
Primer	SUPER PRIMER F1
Plaster/Base Coat (Optional)	Premix render / site mix plaster with SUPER LATEX A88
Tiling	Premix Tile Adhesives with Tiles/Stones

SUBSTRATE

New concrete should be cured for at least 28 days and should have a pull off strength $\geq 1.5 \text{ N/mm}^2$. Cement or mineral based substrates must be prepared mechanically using abrasive blast cleaning or scarifying equipment to remove cement laitance and to achieve an open textured surface. Loose friable material and weak concrete must be completely removed.

APPLICATION

SUPER PRIMER F1 can be apply by brush roll or spray.

❖ **SUPER PRIMER F1** can be used alongside with **SUPER LASTIC S800** for wet areas waterproofing.

TOOLS

Brush: With thick hair brush / Roller: short-piled lamb skin roller / Suitable spray machine

LIMITATIONS

- ❖ Ensure that temperature does not drop below 8°C and that relative humidity does not exceed 80%.
- ❖ Overcoat within 7 days. Dust accumulation over the primer may affect the bonding to the subsequent layers.
- ❖ Do not allow temporary ponding to remain between coats on any horizontal surfaces or until the final coating has totally cured. Brush or mop surface water away during this time.

HEALTH & SAFETY

For information and advice on the safe handling, storage and disposal of chemical products, users shall refer to the most recent Material Safety Data Sheet containing physical, ecological, toxicological and other safety-related data.

LEGAL NOTE

The information, and, in particular, the recommendations relating to the application and end-use of these products, are given in good faith based on current knowledge and experience of the products when properly stored, handled and applied under normal conditions in accordance to the manufacturer recommendations. In practice, the differences in materials, substrates and actual site conditions are such that no warranty in respect of merchantability or of fitness for a particular purpose, nor any liability arising out of any legal relationship whatsoever, can be inferred either from this information, or from any written recommendations, or from any other advice offered. The user of the product must test the product's suitability for the intended application and purpose. The manufacturer reserves the right to change the properties of its products. The proprietary rights of third parties must be observed. All orders are accepted subject to our current terms of sale and delivery. Users must always refer to the most recent issue of the local Product Data Sheet for the product concerned, copies of which will be supplied on request.