

# MCRA

60W, 80W, 100W, 120W, 150W,  
150WS, 200W



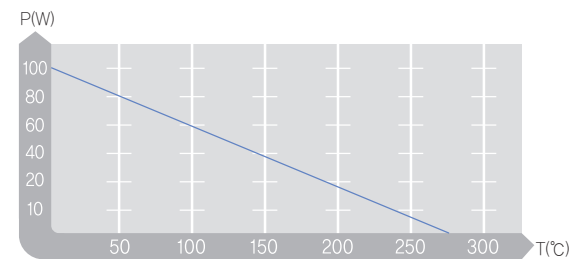
## SPECIFICATIONS

Model	Rated Wattage	Resistance Value(Ω)		Tolerance
		W	N	
MCRA-60	60W	0.1~500	0.1~100	F: ±1% G: ±2% J: ±5%
MCRA-80	80W	0.1~1.0k	0.1~200	
MCRA-100	100W	0.1~1.2k	0.1~350	
MCRA-120	120W	0.1~1.5k	0.1~500	
MCRA-150	150W	0.1~1.5k	0.1~500	
MCRA-150S	150W	0.1~1.5k	0.1~500	
MCRA-200	200W	0.1~2.0k	0.1~1.0k	

## CHARACTERISTICS

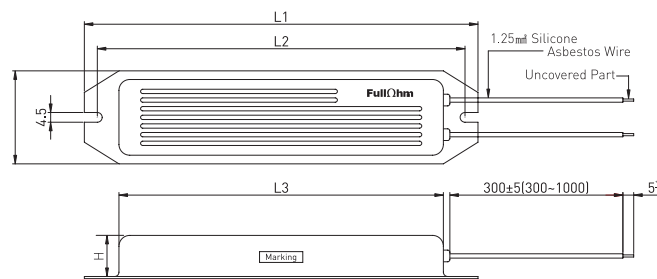
- Temperature range : -55°C ~ 200°C
- Insulation resistance : Over 100MΩ
- Dielectric strength : AC 2,500V / 1 Min
- Temperature coefficient : ±260 ppm/°C max

## POWER DERATING CURVE



※[NOTE] Thermostat sensor included types use 0.5mm<sup>2</sup> silicone asbestos wire.

## DIMENSIONS



Model	L1±0.5	L2±0.5	L3±0.5	W±0.5	H±0.5
MCRA-60	100	90	75	32	12
MCRA-80	150	140	125	35	19
MCRA-100	150	140	125	35	19
MCRA-120	182	172	150	43	20
MCRA-150	182	172	150	43	20
MCRA-150S	182	172	150	43	13
MCRA-200	230	220	200	60	20

## HOW TO ORDER

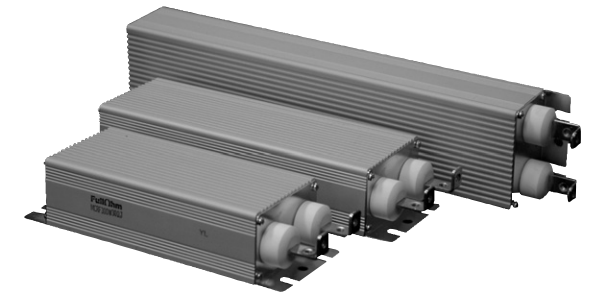
MCRA | 120W | N | 50Ω | J | T145 | 300

| Model | Rated Wattage | For Non-inductive | Resistance Value | Tolerance | Thermostat sensor type | Wire length by(mm) |

- T145 : 145°C
- T200 : 200°C
- - : Not available

# MCRF

300W ~ 2kW



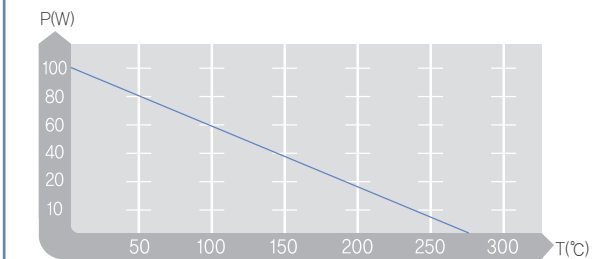
## SPECIFICATIONS

Model	Rated Wattage	Resistance Value(Ω)		Tolerance
		W	N	
MCRF-300	300W	0.1~500	0.1~200	F: ±1% G: ±2% J: ±5%
MCRF-400	400W	0.1~600	0.1~300	
MCRF-500	500W	0.1~600	0.1~300	
MCRF-600	600W	0.1~800	0.1~350	
MCRF-800	800W	0.1~1.0k	0.1~500	
MCRF-1000	1.0kW	0.1~1.5k	0.1~700	
MCRF-1200	1.2kW	0.1~2.0k	0.1~1.0k	
MCRF-1500	1.5kW	0.1~5.0k	0.1~2.0k	
MCRF-2000	2.0kW	0.1~7.0k	0.1~3.0k	

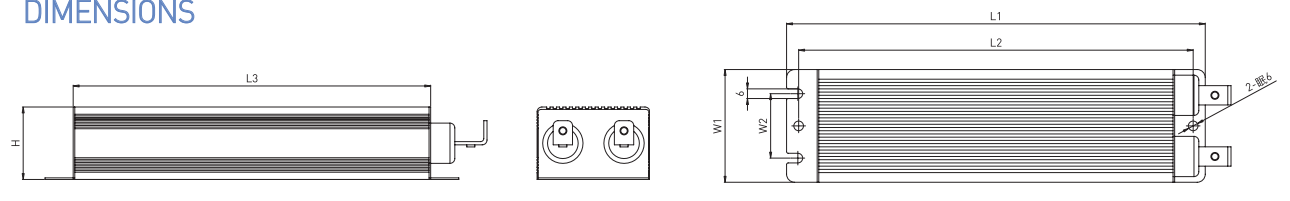
## CHARACTERISTICS

- Temperature range : -55°C ~ 200°C
- Insulation resistance : Over 100MΩ
- Dielectric strength : AC 2,500V / 1 Min
- Temperature coefficient : ±260 ppm/°C max

## POWER DERATING CURVE



## DIMENSIONS



Model	L1±1.0	L2±1.0	L3±1.0	W1±0.5	W2±0.5	H±0.5
MCRF-300	190	175	152	70	39	45
MCRF-400	220	205	182	70	39	45
MCRF-500	240	225	202	70	39	45
MCRF-600	260	245	222	70	39	45
MCRF-800	300	285	262	70	39	45
MCRF-1000	340	325	302	70	39	45
MCRF-1200	400	385	362	70	39	45
MCRF-1500	440	425	402	70	39	45
MCRF-2000	510	495	472	70	39	45

## HOW TO ORDER

MCRF | 300W | N | 50Ω | J | T145

| Model | Rated Wattage | For Non-inductive | Resistance Value | Tolerance | Thermostat sensor type |

- T145 : 145°C
- T200 : 200°C
- - : Not available