

iQSE-06

Quick Solvent Extraction System



*More Intelligent,
More Efficient*

Detelogy was founded in 2011, situated in Guangzhou, China, integrates R&D, manufacture, sales and after-sales maintenance services. It is a high-tech enterprise committed to providing more intelligent and efficient sample pretreatment and analytical equipments for laboratory clients.

We concentrate on laboratory sample pretreatment and develop intelligent equipment with stronger sample processing capability, shorter time and convenient use based on the operator's operating habits, under the background of the vigorous development of high-tech industry, the obvious demand growth of domestic instrument market and the increasing number of sample testing projects. Detelogy has launched Automatic Nitrogen Concentrator, Automatic Intelligent Parallel Concentrator, Quick Solvent Extraction System, Intelligent Graphite Heating Plate, Graphite Digester, Multi-sample Homogenization System, Multi-Vortex Shakers & Mixers and other laboratory sample processing solution to the market and users.

Detelogy intelligent sample pretreatment equipment serve the industries such as food safety, drug analysis, disease control, life science and environmental monitoring. We will keep moving and develop more efficient laboratory solutions and intelligent equipment, therefore more users are able to experience the convenience and efficiency in the sample preparation. We also cooperate with oversea dealers in this industry. And provide laboratory sample pretreatment solutions, share resources, and benefit ourselves and our partners!

We commit ourselves to practicing artificial intelligence in the field of laboratory testing. We have provided high-quality intelligent laboratory products and a full range of services for many users around the world, and have won a certain market and a good reputation at home and abroad.

Mission: Practicing artificial intelligence to achieve a better life in the field of laboratory testing.

Vision: Striving to develop new laboratory technologies to meet the users' demand. Provide global users with smarter and more efficient laboratory products and satisfactory and convenient services!

Values: Devoting ourselves to create value for users; Sincerely cooperating with partners and make the sample preparation easier!

Brand core value: More Intelligent. More Efficient

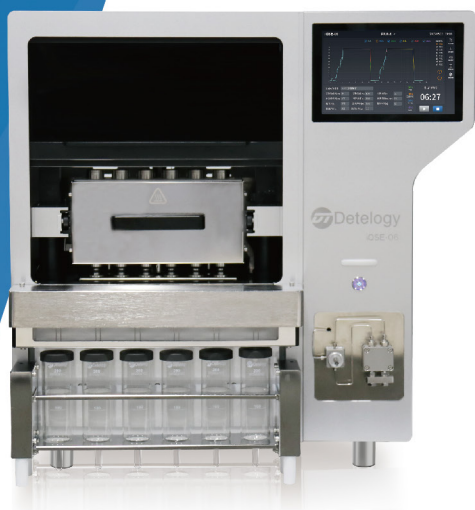
Service concept: customer satisfaction is our motivation!

Quality principle: Detelogy always manufacture high-quality products!

iQSE-06

Quick Solvent Extraction System

Compared with Soxhlet extraction and ultrasonic extraction, iQSE-06 rapidly extracts 6 (semi-)solid samples simultaneously under high temperature and high pressure which ensures good parallelism and greatly reduces processing time and solvent consumption. 10.1" HD control terminal graphically displays real-time temperature and pressure curves. Extraction tanks and collection bottles in different specifications are available for use. Online remote monitoring makes the whole process more intelligent and efficient.



Application Fields



▶ Environmental Monitoring



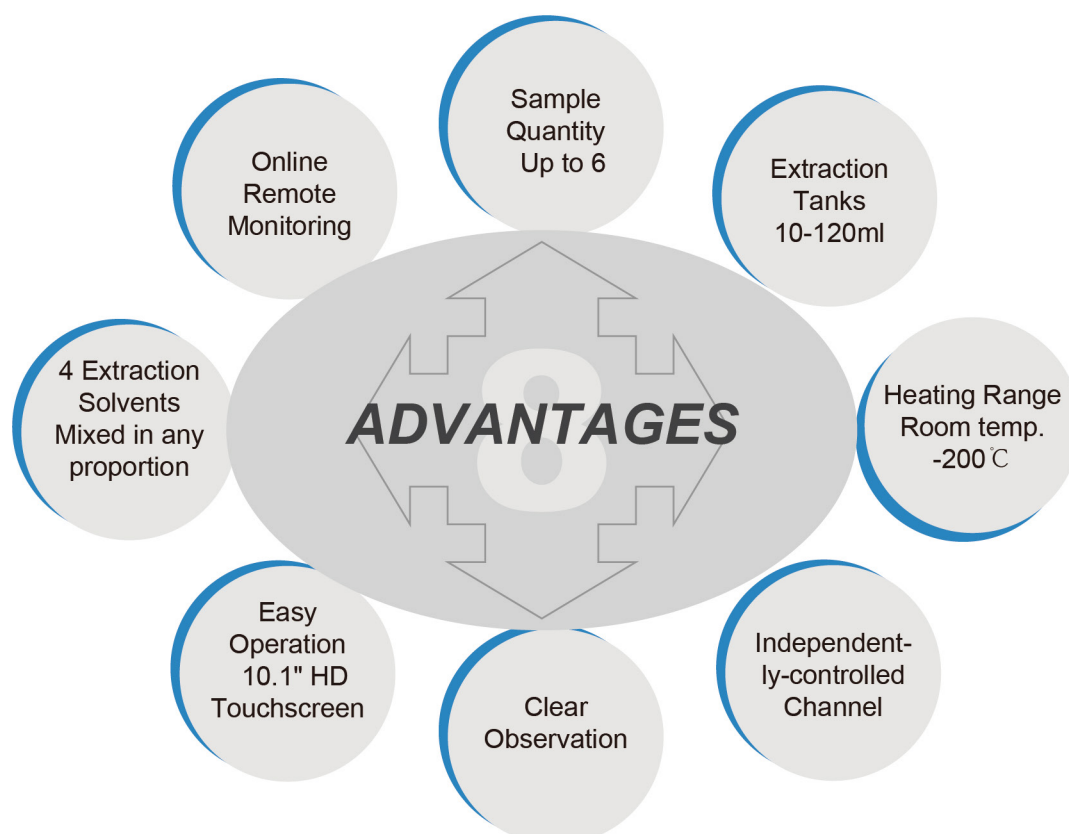
▶ Food Safety



▶ Bio-pharmaceuticals



▶ Chemical Products





1 More Efficient: maximum 6 samples work simultaneously.

2 High Compatibility: 10-120ml extraction tanks are available for different processing needs.

3 Optional Extraction Solvents can be mixed in any proportion.

4 Support General-size Test Tubes: no need to transfer samples before concentration process.

5 Surrounding Heating Design: high thermal conductivity and uniform sample heating. Heating range: room temperature -200℃.

6 Independently-controlled Channel: status of each channel can be checked on control terminal.

7 Clear Observation: front-end window allows to observe the whole extraction process.

8 Multiple Safety Protections: anti-over-temperature, anti-over-pressure, anti-leakage. Powerful exhaust device is equipped for protecting the lab environment.

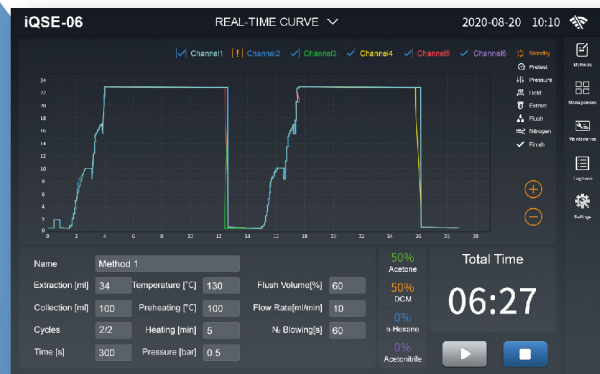
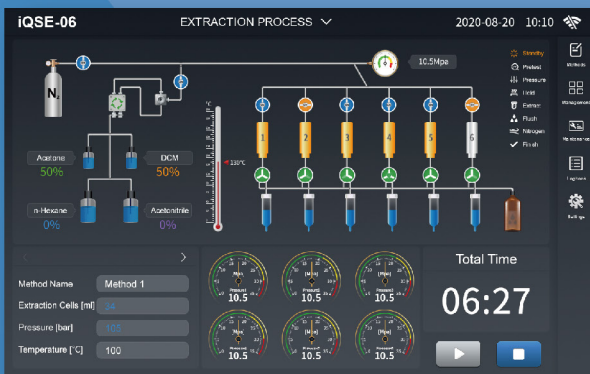
9 10.1" HD colour touchscreen visually displays real-time temperature and pressure curve.

10 Detailed Usage Logbook: access to operation records anytime, e.g. extraction process, leak testing, system cleaning.



Control Software

- ★ Optimal human-computer interaction experience: 10.1" HD color touchscreen visually displays the graphical interface with easy control. Quick switch between Chinese and English interfaces.
- ★ Accessible real-time and saved information: control terminal shows extraction pressure, irrigation volume, etc., 60+ sets of heating parameters are saved and applied anytime. Detailed charts from process report helps analyze extraction results.
- ★ Intelligent Remote Monitoring: support remote monitoring and control of extraction process. Notification messages will be received after the extraction finishes.

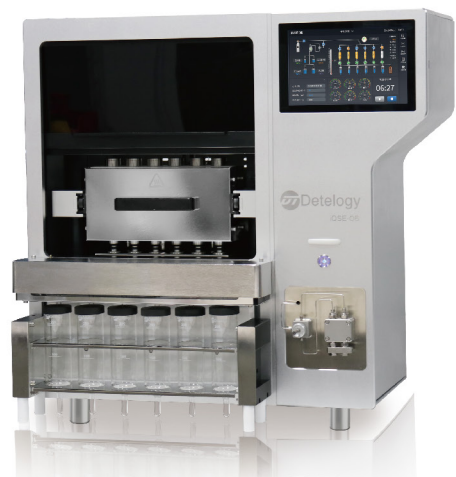
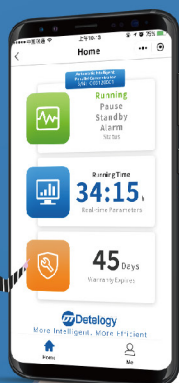


METHOD SETTINGS

Method List	Name	Method 1
Method 1	Extraction(ml)	34
Method 2	Preheating(°C)	100
Method 3	Temperature(°C)	130
Method 4	Heating[s]	300
Method 5	Flush Volume[%]	60
Method 6	Ni Blowing[s]	60
Method 7	Cycles	2
Method 8	Target Channels	Channel 1, Channel 2, Channel 3, Channel 4, Channel 5, Channel 6
Method 9	Solvent Ratio[%]	S1 Acetone 50, S2 DCM 50, S3 n-Hexane 0, S4 Acetonitrile 0
Method 10	Pressure(bar)	105
Method 11	Time[s]	300
Method 12	Flow Rate(ml/min)	30
Method 13	Flow Rate(ml/min)	10
Method 14	N. Blowing[s]	60
Method 15	Pressure (bar)	0.5

USAGE LOGBOOK

No.	Method Name	Date	Time	Status	Action
01	Extraction	2020-08-09	19:59	Normal	See More
02	Leakage Test	--	2020-08-09	Abnormal	See More
03	Leakage Test	--	2020-08-09	Normal	See More
04	Extraction	Method 3	2020-08-09	Normal	See More
05	Flushing	--	2020-08-09	Abnormal	See More
06	Extraction	Method 2	2020-08-09	Normal	See More
07	Leakage Test	--	2020-08-09	Abnormal	See More
08	Extraction	HJ783 OP Pesticides	2020-08-09	Normal	See More
09	Extraction	Method 5	2020-08-09	Normal	See More
10	Flushing	--	2020-08-09	Normal	See More
11	Flushing	--	2020-08-09	Normal	See More



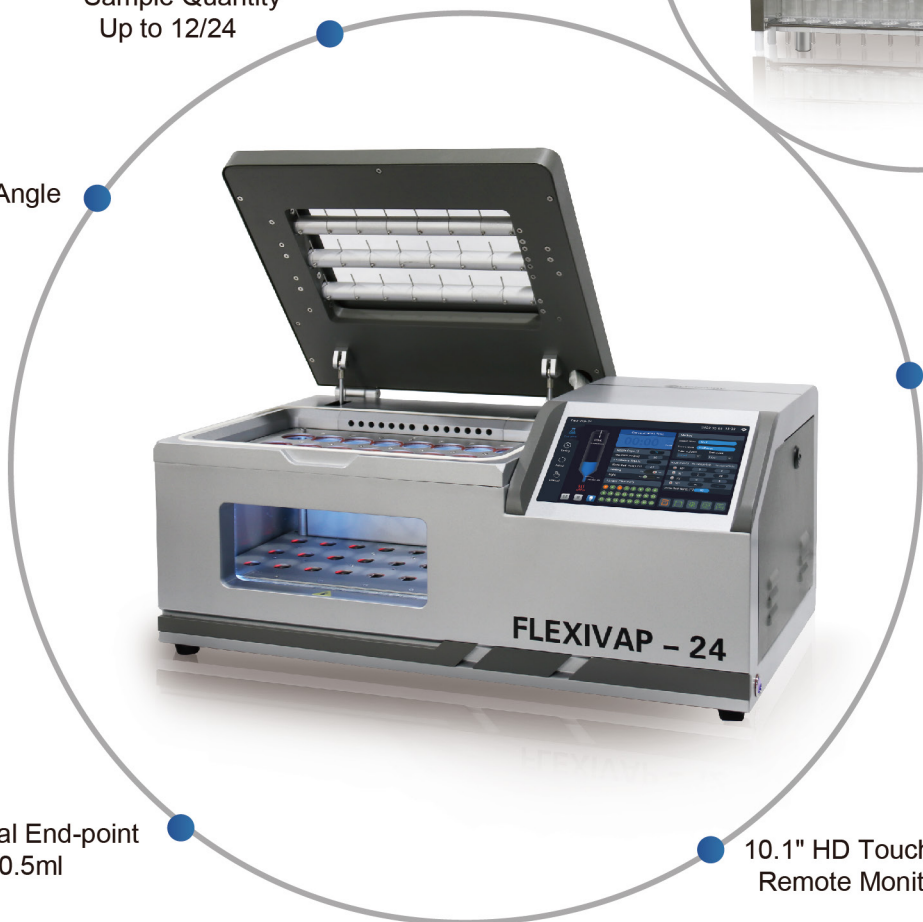
FlexiVap-12/24 Automatic Intelligent Parallel Concentrator

● Matching use of iQSE-06
Reduce sample loss



● Sample Quantity
Up to 12/24

● Flexible
Nozzle Angle
0° - 90°



● Precise Liquid-level
Sensors Detection

● Optional End-point
1ml / 0.5ml

● 10.1" HD Touchscreen
Remote Monitoring

CONTACT US

Guangzhou Detelogy Technology Co.,Ltd.

Headquarter: Room 705, Headquarters Building 25 of Tian'an Hi-Tech Ecological Park, No. 555,

North Panyu Avenue, Panyu District, Guangzhou.

Tel: +86-20-34086606

www.detelogy.com



MAIN PRODUCTS

- Smart Nitrogen Concentrator
- Automatic Nitrogen Concentrator
- Automatic Dual-Mode Nitrogen Concentrator
- Automatic Intelligent Parallel Concentrator
- Multi - Sample Homogenization System
- MultiVortex Shakers & Mixers
- Quick Solvent Extraction System
- Intelligent Solid Phase Extraction Device
- iGBlock-36 Graphite Digester
- iGHP Intelligent Graphite Heating Plate