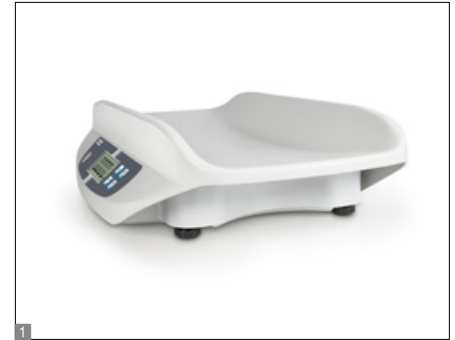


Baby scale KERN MBA



Compact baby scale with special Safe-Guard tray with EC type approval and approval for professional mobile or stationary medical use in medical diagnostics

Features

- Verification class III (verification is optional)
- Approved as a medical device according to 93/42/EEC
- Modern design
- **Safe-Guard tray:** the special, particularly recessed tray with raised side bolsters offers optimum conditions for the safe weighing of babies
- Large, insensitive plastic tray, without corners and edges, therefore particularly hygienic and easy to clean
- Lightweight, compact design, therefore easy to transport and store
- Secure and non-slip positioning with height-adjustable rubber feet
- Easy to use
- Hold function: When patients do not lie completely still, a stable weight is calculated using an average weight and this is then “frozen”. This means that you have sufficient time to attend to the young patient first and then read the weight reading in peace
- Integrated AUTO-OFF function to preserve the batteries

Technical data

- LCD display, digit height 25 mm
- Dimensions of tray WxD 600x260 mm
- Overall dimensions WxDxH 600x360x141 mm
- Batteries included, 6x1.5 V AA, operating time up to 20 h (up to 50 h without using WiFi)
- Net weight approx. 4,6 kg

Accessories

- **Mechanical height rod** to fix to the scale, measuring range 30 cm–80 cm, increments of 0,1 cm, KERN MBA-A01
- WiFi data interface to transfer data from balances to PC or tablet, must be ordered at purchase, (Factory Option) KERN YMI-A01
- Cleaning cloths, alcohol-free cloths for disinfectant wiping, quick acting, based on modern quaternary ammonium compounds and effective against papova viruses. Particularly gentle on materials, and very well suited for disinfecting products which are sensitive to alcohol. Fulfill the legal requirements for occupational safety in accordance with TRGS 525/540. Packaging contents 100 pcs., size 20x22 cm per cloth, KERN MYC-01
- External mains adapter, 100 V – 240 V, Standard EU, CH, UK, KERN YKA-43

STANDARD	OPTION	FACTORY
KCP MOVE BATT 1 DAY	230V	WIFI M +3 DAYS

* Within the EU, official verification is mandatory by law for scales that are intended for use as a medical device. Please add this to your order. We require the location of use and the post code for the verification.

Model	Weighing capacity	Readability	Verification value	Mandatory by law Verification
	[Max] kg	[d] kg	[e] kg	KERN
MBA 10K-3M	15	0,005	0,005	965-128.



Adjusting program CAL:

For quick setting up of the balance's accuracy. External adjusting weight required



Memory:

Balance memory capacity, e.g. for article data, weighing data, tare weights, PLU etc.



Data interface RS-232:

To connect the balance to a printer, PC or network



RS-485 data interface:

To connect the balance to a printer, PC or other peripherals. Suitable for data transfer over large distances. Network in bus topology is possible



Bluetooth* data interface:

To transfer data from the balance to a printer, PC or other peripherals



WIFI data interface:

To transfer data from the balance to a printer, PC or other peripherals



Control outputs

(optocoupler, digital I/O): To connect relays, signal lamps, valves, etc.



Statistics:

using the saved values, the device calculates statistical data, such as average value, standard deviation etc.



PC Software:

to transfer the measurements from the device to a PC



GLP/ISO log:

With date and time. Only with KERN printers



KERN Communication Protocol (KCP):

It is a standardized interface command set for KERN balances and other instruments, which allows retrieving and controlling all relevant parameters and functions of the device. KERN devices featuring KCP are thus easily integrated with computers, industrial controllers and other digital systems



Piece counting:

Reference quantities selectable. Display can be switched from piece to weight



Totalising level A:

The weights of similar items can be added together and the total can be printed out



Weighing units:

Can be switched to e.g. nonmetric units. Please refer to website for more details



Weighing with tolerance range

(Check weighing) Upper and lower limiting can be programmed individually, e.g. for sorting and dosing. The process is supported by an audible or visual signal, see the relevant model



ZERO:

Resets the display to "0"



Hold function:

When patients do not stand, sit or lie completely still, a stable weight is calculated using an average weight



Hold function:

When the weighing conditions are unstable, a stable weight is calculated as an average value



Protection against dust and water splashes IPxx:

The type of protection is shown in the pictogram cf. DIN EN 60529:2000-09, IEC 60529:1989+A1:1999+A2:2013



Suspended weighing:

Load support with hook on the underside of the balance



Battery operation:

Ready for battery operation. The battery type is specified for each device



Rechargeable battery pack:

Rechargeable set



Battery operation rechargeable

Prepared for a rechargeable battery operation



Universal plug-in power supply:

with universal input and optional input socket adapters for
A) EU, CH
B) EU, CH, GB, USA



Plug-in power supply:

230V/50Hz in standard version for EU. On request GB, AUS or USA version available



Integrated power supply unit:

Integrated in balance. 230V/50Hz standard EU. More standards e.g. GB, AUS or USA on request



Weighing principle: Strain gauges

Electrical resistor on an elastic deforming body



Peak hold function:

capturing a peak value within a measuring process



Push and Pull:

the measuring device can capture tension and compression forces



Integrated scale:

In the eyepiece



360° rotatable microscope head



Monocular Microscope:

For the inspection with one eye



Binocular Microscope:

For the inspection with both eyes



Trinocular Microscope:

For the inspection with both eyes and the additional option for the connection of a camera



Abbe Condenser:

With high numerical aperture for the concentration and the focusing of light



Halogen illumination:

For pictures bright and rich in contrast



LED illumination:

Cold, energy-saving and especially long-life illumination



Fluorescence illumination for compound microscopes:

With 100 W mercury lamp and filter



Fluorescence illumination for compound microscopes:

With 3 W LED illumination and filter



Phase contrast unit:

For a higher contrast



Darkfield condenser/unit:

For a higher contrast due to indirect illumination



Polarising unit:

To polarise the light



Infinity system:

Infinity corrected optical system



Automatic temperature compensation:

For measurements between 10 °C and 30 °C



Verification possible:

The time required for verification is specified in the pictogram



Package shipment:

The time required for internal shipping preparations is shown in days in the pictogram



Pallet shipment:

The time required for internal shipping preparations is shown in days in the pictogram

*The Bluetooth® word mark and logos are registered trademarks owned by Bluetooth SIG, Inc. and any use of such marks by KERN & SOHN GmbH is under license. Other trademarks and trade names are those of their respective owners.