

GENERAL PRESSURE GAUGE **A**

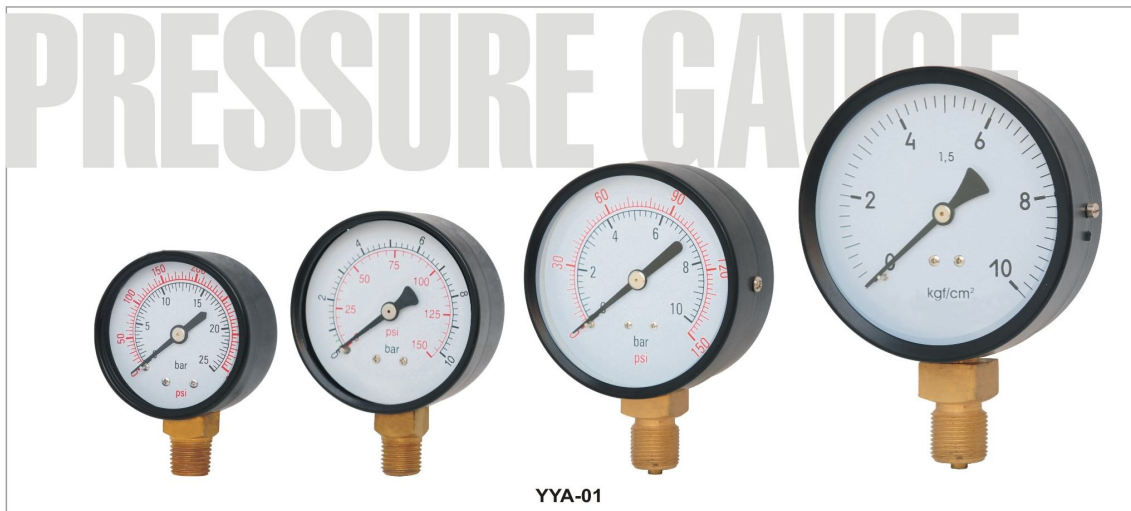
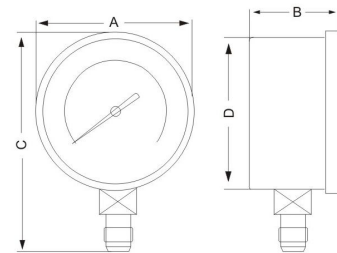
SPECIFICATION

- Diameter: 1-1/2", 2", 2-1/2", 3", 4", 6", 8", 10"
- Case: steel
- Window: glass, acrylic, polycarbonate
- Internal: brass, phosphor bronze, stainless steel
- Inlet thread: 1/8", 1/4", 3/8", 1/2", NPT, BSPT, BSP
- Connection: bottom connection, center back male connection
- Range: 0~10000psi
- Scale: psi, bar, MPa, kPa, kg/cm², Hg single or dual scale or according to customers order.
- Accuracy: 2.5%, 1.6%, 1%



YYA-02

Diameter	A	B	C	D	T.Ambient
10"	252	52	288	249	20°C—60°C
8"	200	48.5	242	203	
6"	150	43	180	147.6	
4 1/2"	113	35	141.2	111.7	
4"	100	37	135	98	
3 1/2"	94	31.4	116	92	
3"	77	35	103	75.3	
2 1/2"	63	30	85	60.6	
2"	52.5	30	72	51.3	
1 1/2"	42	24	57.2	41	



YYA-01