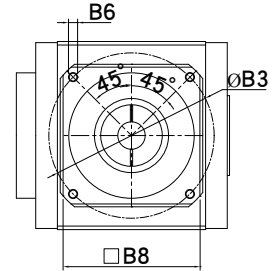
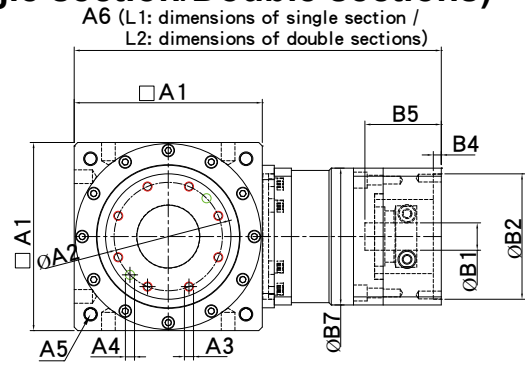
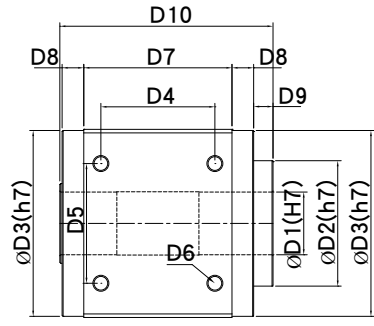
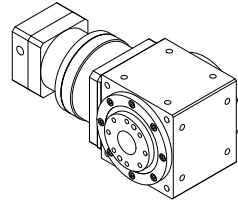


# RXW-AS series: RF Hollow turntable models (Dimensions of L1/L2: Single section/Double sections)



A6 (L1: dimensions of single section /  
L2: dimensions of double sections)

Spec	RXW045AS	RXW070AS	RXW080AS	RXW110AS	RXW135AS	RXW135BS	RXW165AS	RXW165BS	RXW200AS	RXW200BS	RXW250AS
D1	9	16	*16/20	*25/30	*35/40	*35/40	*50/55	*50/55	*65/80	*65/80	75
D2	20	38	45	65	85	85	110	110	140	140	140
D3	43.2	60	78	106	133	133	163	163	195	195	245
D4	36	41.43	49.5	68	86	78	106	100	141	129	176.78
D5	26	41.43	49.5	65	83	83	105	105	130	130	176.78
D6	4-M4*P0.7	4-M5*P0.8	4-M6*P0.8	4-M8*P1.25	4-M10*P1.5	4-M10*P1.5	4-M14*P2.0	4-M14*P2.0	4-M14*P2.0	4-M14*P2.0	4-M20*P2.5
D7	54	70	67	90	120	102	142	130	182	155	227
D8	10.5	6.25	13	15	10	19	13	19	8.5	22	21
D9	3.5	8.25	7	9.5	9.5	9.5	17	17	22	22	15
D10	80	92.25	102	131.5	151.5	151.5	187	187	223	223	284
A1	46	70	80	110	138	135	168	165	200	200	250
A2	15.5	30	36	50	70	70	95	95	124	124	124
A3	6-M3*P0.5	6-M5*P0.8	8-M5*P0.8	8-M5*P0.8	8-M8*P1.25	8-M8*P1.25	8-M8*P1.25	8-M8*P1.25	12-M8*P1.25	12-M8*P1.25	12-M10*P1.5
A4(H7)		2-φ5	2-φ5	2-φ5	2-φ8	2-φ8	2-φ8	2-φ8	2-φ8	2-φ8	2-φ10
A5	P.C.D φ 53 4-M5*P0.8	P.C.D φ 75 4-M5*P0.8	P.C.D φ 93 4-M6*P1.0	P.C.D φ 130 4-M8*P1.25	P.C.D φ 160 4-M10*P1.5	P.C.D φ 160 4-M10*P1.5	P.C.D φ 193 4-M12*P1.75	P.C.D φ 193 4-M12*P1.75	P.C.D φ 240 4-M16*P2.0	P.C.D φ 240 4-M16*P2.0	P.C.D φ 300 4-M30*P2.5
A6 (L1: single section dimension)	121	159	170	227	290	251	344	312	425	378	467
A6 (L2: single section dimension)			192	254	321	289	391	343	476	425	520
B1	5,6,35,8	6.35,8,9 11,14	6.35,8,9 11,14, 16,19	11,14,16 19,22,24	14,16,19 22,24,28 32,35	11,14,16 19,22,24	19,22,24 28,32,35 38,42	14,16,19 22,24,28 32,35	22,24,28 32,35,38 42,55	19,22,24 28,32,35 38,42	32,35,38 42,55
B2	22,30,38.1	30,38.1 40,50,60	30,36,38.1 40,50 60,70	50,60,70 80,95,110	70,80,95 110,114.3 130	50,60,70 80,95,110	95,110 114.3,130 180	70,80,95 110,114.3 130	110,114.3 130,165 180,200	95,110 114.3,130 180	110,114.3 130,165 180,200
B3	43.8,45,46 66.7,70.7	45,46,66.7 70,70.7,75	45,46,66.7 70,70.7 75,90	70,75,90 100,115 130,145	90,115,130 145,165 200	70,75,90 100,115 130,145	115,130 145,165 200,215	90,115,130 145,165 200	130,145 165,200 215,235	115,130 145,165 200,215	165,200 215,235 250
B4	3	4	4,5	5,7	7	5,7	7	7	10	7	10
B5	≤ 28	≤ 31	≤ 41	≤ 62	≤ 80	≤ 62	≤ 86	≤ 80	≤ 117	≤ 86	≤ 125
B6	M3,M4	M3,M4 M5	M3,M4 M5,M6	M4,M5 M6,M8	M6,M8 M10,M12	M4,M5 M6,M8	M6,M8 M10,M12	M6,M8 M10,M12	M8,M10 M12	M6,M8 M10,M12	M10,M12 M14,M16 M20
B7	46	60	60	90	120	90	142	120	182	142	200
B8	46	62,80	62,80,90	90,115,120	120,140,180	90,115,120	142,180,200	120,140,180	182,200,220	142,180,200	200,220,250

- (\*) additional bore of hollow shaft (mm)
- Actual dimensions are according to the 2D/3D drawings.
- Continued use for 12 hr/day and longer will decrease the lifespan by 1/2.