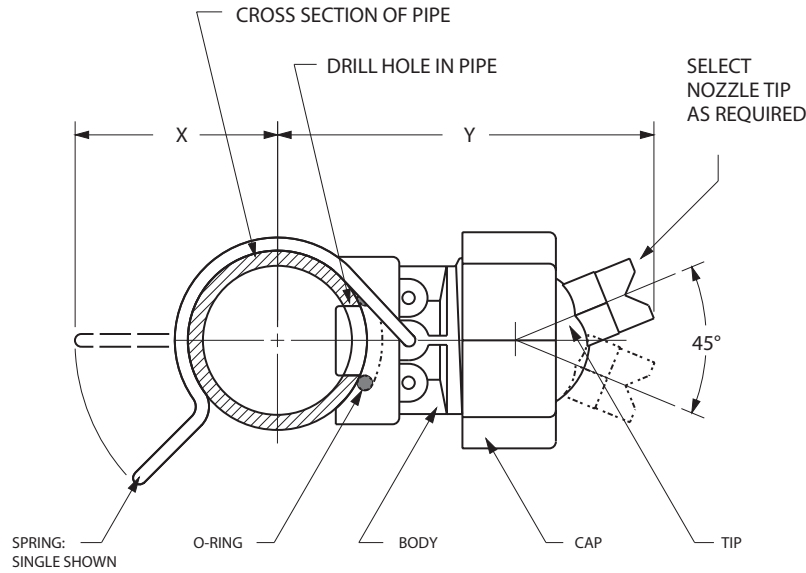


# ADJUSTABLE NOZZLE ASSEMBLY



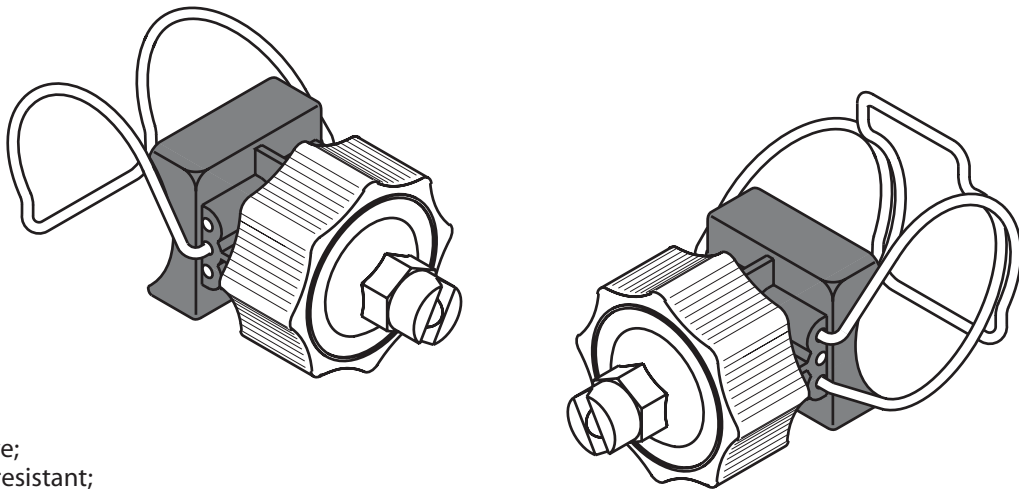
Major Dimensions

(inch)		X	Y
1"	Pipe	1.70	3.21
1-1/4"	Pipe	1.89	3.43
1-1/2"	Pipe	2.02	3.56
2"	Pipe	2.25	3.75

(mm)		X	Y
25 mm	Pipe	43.2	81.5
32 mm	Pipe	48.0	87.1
40 mm	Pipe	51.3	90.4
50 mm	Pipe	57.2	95.3

ALSO AVAILABLE WITH DOUBLE SPRINGS  
FOR PRESSURES FROM 60 TO 150 PSI  
(4.1 TO 10.3 BAR)



## Features:

- inexpensive;
- corrosion resistant;
- impervious to most chemicals;
- good heat resistance;
- injection molded from custom blended polypropylene;
- standard with Single Spring Clamp;
- optional Double Spring Clamps for pressures over 60 psi (4.0 bar);
- resists clogging;
- directional adjustment of nozzle tip anywhere within 45°;
- tips available in Full Cone, Hollow Cone or Flat Spray configurations;
- tips available with threaded ball Connection in 1/8, 1/4, 3/8 and 1/2 inch NPT or BSP threads;
- nozzle bodies available in three spigot sizes to fit either 21/32", 9/16" or 19mm diameter holes on the riser.

# EASY-FIT NOZZLE



## Clip-eyelet designed special nozzle for easy-fit

### SPRAY FEATURES

- ★ Designed for easy installation and fast, easy, no-tool maintenance.
- ★ Assembly simply to the header by the spring-grade stainless steel clamps.
- ★ Secured with a hand twist of the cap.
- ★ Fits onto 1", 1-1/4", 1-1/2" pipe with Ø15(14.3-15m/m), Ø17(16.4-17m/m), and Ø20(19.0-20m/m) diameter drilled hole.
- ★ Made of a chemically coupled, glass reinforced polypropylene and can withstand high temperatures and resist corrosion.
- ★ Adjustable ball- type nozzle allows a quick change of the spray's direction.
- ★ Providing consistent spray patterns, even coverage and chemical resistance suitable for cleaning, conversion coating and rinsing.
- ★ Suitable for Electronics, Food, Iron & Steel, Paper & Pulp, Automotive & Chemical Industries.

#### Base & Clip

EB



#### Easy-Fit Thread Ball Nozzle

EB + TB + Nozzle



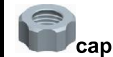
#### Easy-Fit Flat Ball Nozzle

EB +HB



#### Easy-Fit Blank Ball Nozzle

EB +BB



SERIES EASY-FIT

#### EB Type

- ★ Cap can be removed by hand twist.
- ★ Special clip design, nozzle can be easily fixed onto the pipe just by drilling a hole on the pipe, no other tools necessary.

#### Construction:

- ★ Body assembly connections with Ø15 (14.3-15m/m), Ø17 (16.4-17m/m), and Ø20 (19.0-20m/m)

#### TB Type

- ★ With 1/4", 3/8" Female thread, TB can further be installed all kinds of tips
- ★ An economical way to assemble.

#### Materials:

- ★ Made of PP/ Fiberglass materials.

#### HB Type

- ★ Uniform distribution fan shaped spray.
- ★ Available spray angles of 65° & 80° at 3Kg pressure.
- ★ Round hollow tip, elevates resistibility to clogging.
- ★ Nozzle bodies are color-coded by spray capacity for easy identification.

#### Materials:

- ★ Made of PP/ Fiberglass materials.

#### BB Type Features:

- ★ No-hole design tip can be used to stop spray from coming-out.




#### Materials:

- ★ Made of PP/ Fiberglass materials.

drilled holes pipe  
 ★ Fits onto 1", 1-1/4", 1-1/2" pipe  
**Materials:**  
 ★ Body and cap are all made of PP/ Fiberglass materials.  
 ★ Clamp is made of 316SS material.

**Application:**  
 ★ HB applies in coating industry, washing mechanism.

**CAPACITY CHART**

Model No	Nozzle Color	Diam (m/m)	Flow Range (l/Min) Pressure (kg/cm <sup>2</sup> )						
			0.5 kg/cm <sup>2</sup>	0.7 kg/cm <sup>2</sup>	1.0 kg/cm <sup>2</sup>	1.2 kg/cm <sup>2</sup>	1.5 kg/cm <sup>2</sup>	2.0 kg/cm <sup>2</sup>	3.0 kg/cm <sup>2</sup>
HB 10		2.0	1.60	1.89	2.26	2.47	2.76	3.19	3.91
HB 20		2.8	3.19	3.78	4.52	4.95	5.53	6.39	7.82
HB 30		3.6	4.79	5.67	6.77	7.42	8.29	9.58	11.73
HB 35		3.8	5.59	6.61	7.90	8.66	9.68	11.17	13.69
HB 40		4.0	6.39	7.56	9.03	9.89	11.06	12.77	15.64
HB 50		4.4	7.98	9.44	11.29	12.37	13.82	15.96	19.55
HB 60		4.8	9.58	11.33	13.55	14.84	16.59	19.16	23.46

**SERIES EASY-FIT**