

# TUCSON







Pictures are for illustration purposes only. Actual units may differ. Terms & conditions apply.

# Step in, Stand out.

The all-new TUCSON signals the start of a new day, and a new way of driving. Rejecting the ordinary, the all-new TUCSON pushes the boundaries of the segment to reinvent just about everything. Outside, TUCSON is designed to impress while inside, you'll discover a level of roominess, comfort and versatility that exceeds all expectations.



Parametric radiator grille



MFR LED headlamps



LED rear combination lamps\*



Smart tailgate system\*



19" Alloy Wheels\*\*

\*Only available on the Max variant.\*\*Only available on Plus and Max variants.



# Experience that open feeling.

A feeling of openness welcomes you the moment you step into TUCSON's cabin. The open-type cluster is a major innovation in design that establishes a premium, high-tech atmosphere that makes you feel safe, relaxed, and confident. Hidden out of sight, the innovative multi-air mode system diffuses cold or warm air gently and indirectly so it's not as harsh on your skin.



Full Digital 10.25-inch TFT LCD + RHEOSTAT\*



Ventilated front seats\*



Heated front seats\*

\*Only available on the Max variant.



Pictures are for illustration purposes only. Actual units may differ. Terms & conditions apply.

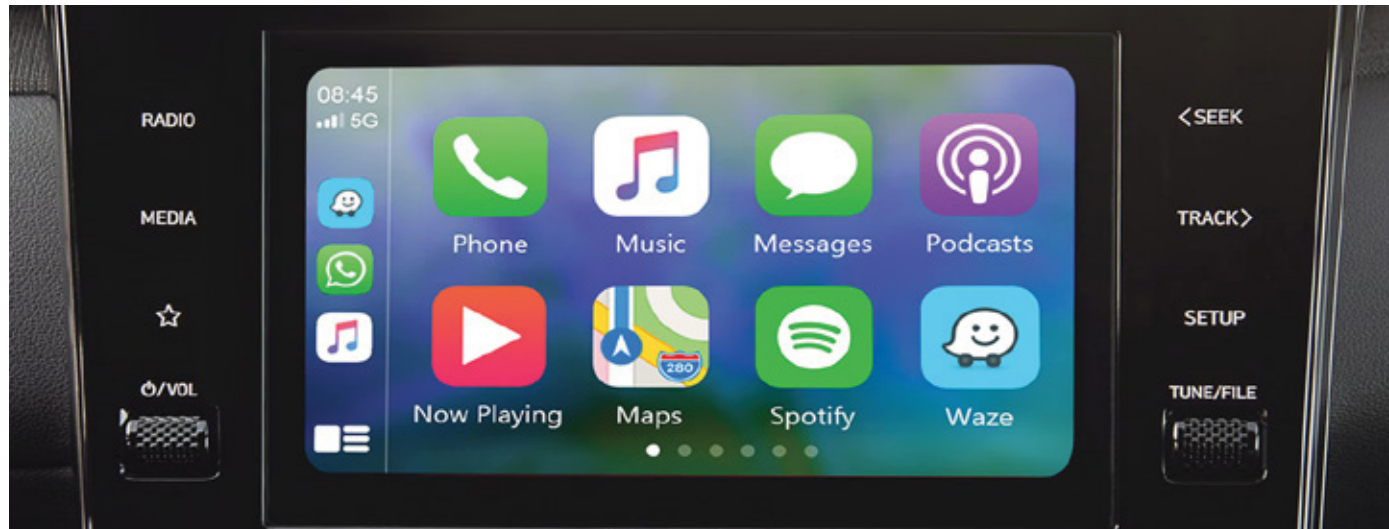




Pictures are for illustration purposes only. Actual units may differ. Terms & conditions apply.

# Your digital journey starts here.

Whatever the journey, time seems to fly by when you have a reliable travel companion along for the ride like TUCSON's 8-in infotainment system and the touchscreen is easy to operate and syncs effortlessly with your smartphone to provide you some entertainment and information you need while on the road. And with Smart Cruise Control, highway driving is a lot more convenient.



8-inch touchscreen infotainment system with wireless Apple CarPlay®, Android Auto™ and Voice Recognition



Smart Cruise Control (SCC) with Stop & Go\*



Dual Zone Auto with Rear Aircond Vent\*

\*Only available on the Max variant.



# Live for the moment.

Whether it's a solo adventure or a long weekend excursion with the entire family, TUCSON offers you exceptional versatility like the rear seat folding feature that provides 1,903 litres of flat storage space. The passenger space is equally accommodating with abundant amounts of room to keep everyone seated comfortably.







Pictures are for illustration purposes only. Actual units may differ. Terms & conditions apply.





Pictures are for illustration purposes only. Actual units may differ. Terms & conditions apply.



# You set the tempo.

Press the accelerator pedal and your pulse rate quickens as TUCSON responds with a surge of smooth, quiet power made possible by Smartstream, Hyundai's latest engine technology.

## Smartstream Engines

### 2.0 Lite

Gasoline 2.0 MPi + 6-Speed Automatic (Lever Type)

156 Maximum power  
PS/6,200rpm

192 Maximum torque  
Nm/ 4500rpm

### 1.6T Plus and Max

Gasoline 1.6T-GDi + 7-Speed Dual Clutch Transmission (E-Shift)

180 Maximum power  
PS/5,500rpm

265 Maximum torque  
Nm/ 1500 - 4500rpm



7-Speed Dual Clutch Transmission (E-Shift)\*



### Drive mode

With Drive mode, you get to pick the style suits you best: NORMAL is for relaxed everyday driving while ECO gives you optimal fuel efficiency. SPORT is for quicker acceleration, and SMART automatically adjusts gear shift intervals based on an analysis of your recent driving patterns.

\*Only available on Plus and Max variants.

# Hyundai SmartSense™



## Forward Collision-Avoidance Assist (FCA, Junction Turning)\*

FCA capabilities have been expanded to include Junction Turning function. While driving if there is a risk of collision with an oncoming vehicle while turning right at an intersection, the function automatically assists with emergency braking.



## Blind-Spot Collision-Avoidance Assist (BCA)\*

BCA uses rear corner radar to monitor both of your blind spots. If a vehicle is detected in the blind spot while the turn signal is flashing, BCA will automatically apply differential braking during your attempted lane change thus helping you avoid an unsafe lane change and a potential collision.



## Rear Occupant Alert (ROA)

This standard feature sounds an alert to remind of rear seat occupants when exiting the vehicle.

\*Only available on the Max variant.





**Lane Following Assist (LFA)\***

LFA keeps you centered within the lane using its front view camera to monitor lane markers.



**Smart Cruise Control (SCC)\***

SCC maintains the set speed while keeping a set distance away from the vehicle ahead without ever requiring any additional inputs from the driver.



**Rear Cross-Traffic Collision-Avoidance Assist (RCCA)**

When backing out, RCCA warns the driver of the approach of a vehicle crossing his rearward path; if necessary, the emergency braking is automatically applied to avoid a collision.



**Forward/Reverse Parking Distance Warning (PDW)**

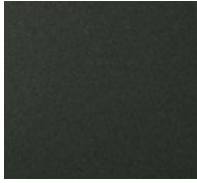
If your car is too close to an obstacle, PDW warns you by using ultrasonic sensors in the bumpers. So you can avoid scratches and park safely.

\*Only available on the Max variant.

# Exterior colours



Creamy White Pearl



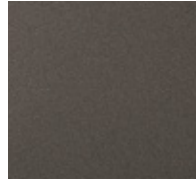
Amazon Gray Metallic



Phantom Black Pearl



Crimson Red Pearl\*

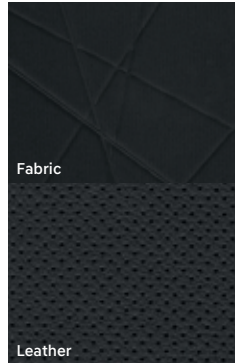


Silky Bronze Metallic\*

# Interior colours



Black Interior



Fabric

Leather



Front Wheel Tread - 1,615

Overall Width - 1,865



Wheelbase - 2,755

Overall Length - 4,630

Overall Height  
(Including roof rack)

1,665



Rear Wheel Tread - 1,622

\*Only available on Plus and Max variants.



# Specifications

Type	2.0 Lite	1.6T Plus	1.6T Max
<b>Drivetrain</b>			
Engine	Smartstream G2.0 MPI	Smartstream G1.6 T-GDi	
Displacement (cc)	1,999	1,598	
Bore x Stroke (mm)	81.0 x 97.0	75.6 x 89.0	
Compression Ratio	10.8	10.5	
Max Power (PS/rpm)	156 PS / 6,200 rpm	180 PS / 5,500 rpm	
Max Torque (Nm/rpm)	192 Nm / 4,500 rpm	265 Nm / 1,500–4,500 rpm	
Max Speed (km/h)	181	201	
Acceleration (0-100km/h) (sec)	11.4	8.8	
Transmission	6 Speed Automatic (Lever Type)	7 Speed Dual Clutch Transmission (E-Shift)	
Drive System	2 Wheel Drive (FWD)		
<b>Dimension</b>			
O.A.L (mm)	4,630		
O.A.W (mm)	1,865		
O.A.H (mm)	1,665		
Wheelbase (mm)	2,755		
Ground Clearance (mm)	181		
<b>Suspension</b>			
Front	MacPherson Strut		
Rear	Multi Link		
<b>Brakes</b>			
Front Brake Type	Ventilated Disc 16"		
Rear Brake Type	Ventilated Disc 16"		
Electronic Parking Brake	Equipped with Auto Hold		
<b>Wheels &amp; Tyres</b>			
Wheels	Alloy 17"	Alloy 19"	
Tyres	235 / 65R17	235 / 55 R19	
Spare Tyre	Full Size Alloy (235/65R17)	Full Size Alloy (235/55 R19)	
<b>Hyundai SmartSense™</b>			
Cruise Control (CC)	Conventional		Smart Cruise Control (SCC) w/ Stop & Go
Forward Collision-Avoidance Assist (FCA)	-		Equipped (Vehicle / Pedestrian / Cyclist)
Forward Collision-Avoidance Assist (FCA-JT) - Junction	-		Equipped
Lane Keeping Assist (LKA)	-		Equipped
Lane Following Assist (LFA)	-		Equipped
Driver Attention Warning (DAW)	-		Equipped
Leading Vehicle Departure Alert (LVDA)	-		Equipped
High Beam Assist (HBA)	-		Equipped
Blind-Spot Collision-Avoidance Assist (BCA)	-		Equipped
Blind-Spot Collision Warning (BCW)	Equipped		
Safe Exit Warning (SEW)	Equipped		
Rear Occupant Alert (ROA)	Equipped		Equipped with Motion Sensor

Type	2.0 Lite	1.6T Plus	1.6T Max
<b>Steering</b>			
Steering Type	Rack & Pinion (C-MDPS)		
Tilt & Telescopic	Equipped (Manual)		
<b>Exterior</b>			
Headlamps	LED MFR		
Tail lamps	Equipped		
LED Daytime Running Light	Bulb	LED Combination	
Roof Rack (Aluminum)	-	Equipped	
<b>Interior</b>			
Seat Material	Fabric	Leather	
Seat Adjustment	Manual Adjustment	Driver Seat 8-Way (with Lumbar Support) + Manual Passenger Seat	Driver Seat 8-Way (with Lumbar Support) + 8-Way Power Passenger Seat
Heated & Ventilated Front Seats (3-Stage)	-		Equipped
Leather Steering Wheel	Leather		
Supervision Cluster	Supervision 4.25 inch TFT LCD + RHEOSTAT		Full Digital 10.25 inch TFT LCD + RHEOSTAT
Power Window	Front (Auto Up/Down with Safety)		Front + Rear (Auto Up/Down with Safety)
Boot Space- VDA (ℓ)	582 (Seat-up) / 1,903 (Folded)		
<b>Audio</b>			
Audio System & Connectivity	8" Touchscreen with MP3 playback, AUX-in, USB, Wireless Android Auto & Apple CarPlay with Voice Recognition		
Speakers	4 Speakers + 2 Tweeter		
Steering Wheel Audio Control	Equipped		
Bluetooth Connectivity	Equipped		
<b>Comfort &amp; Convenience</b>			
Smart Key with Push Start Button	Equipped		
Remote Start Function	Equipped		
Drive Mode Select	Eco, Normal, Sport, Smart		
Rear-View Camera	Equipped with Dynamic Parking Guide		
Power Outlet	2 (Center Console, Luggage Side)		
USB Port	3 (1 x connectivity, 2 x charging)		
Navigation	Waze/Google Map (Android Auto/Apple CarPlay)		
Air Conditioner	Manual Temp. Control		Dual Zone Auto with Rear Aircond Vent
Power Tailgate	-	Equipped	
Electronic Chromic Mirror (ECM)	-	Equipped	
Auto Wiper	-	Equipped	
Wireless Charging	-	Equipped	
Paddle Shift	-	Equipped	
Tyre Pressure Monitoring System (TPMS)	-	Equipped	
<b>Safety &amp; Security</b>			
Airbag	7 (Driver, Front Passenger, Front Thorax, Side & Curtain)		
Anti-lock Braking System (ABS)	Equipped		
Electronic Stability Control (ESC)	Equipped		
Hill-Start Assist Control (HAC)	Equipped		
Child Lock	Manual		
ISOFIX	2-Rear Right & Left		
Parking Assist System	Reverse		Forward & Reverse

Pictures are for illustration purposes only. Actual units may differ. Terms & conditions apply.

Dealer stamp