

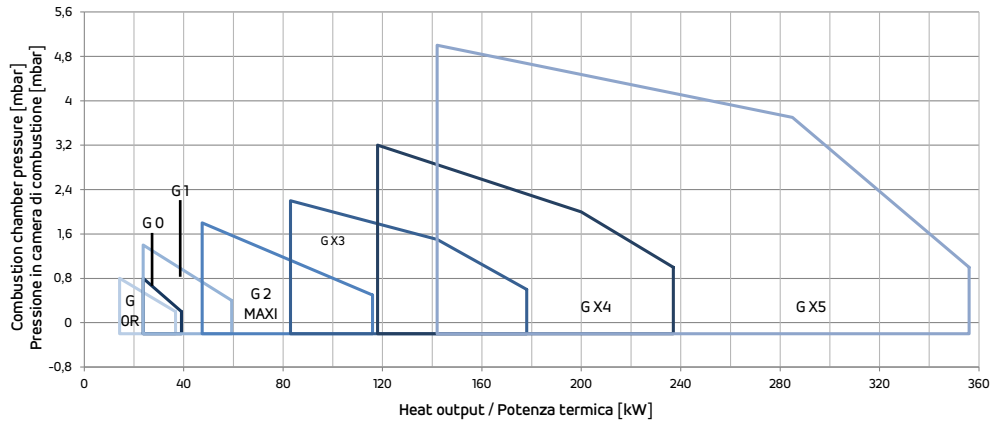
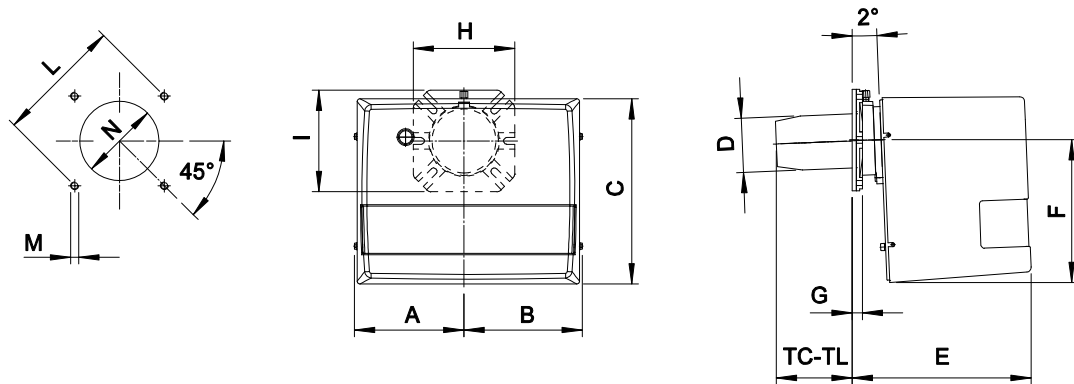


| 1 STAGE MONOSTADIO | kg/h | | kW | | ⚡ |
|---|------|-----|------|------|----|
| | min | max | min | max | |
| G 0S 2001/2003* - G 0H 2001 | 2 | 3,3 | 23,7 | 39,1 | 1F |
| G 0SR 2001/2003* - G 0HR 2001 | 1,2 | 3,1 | 14,2 | 36,7 | |
| G 1S 2001/2003* ° - G 1H 2001 - G 1R 2001/2003* | 2 | 5 | 23,7 | 59,3 | |
| G 2S MAXI ° - G 2H MAXI | 4 | 9,8 | 47,4 | 116 | |
| G X3S ° - G X3H | 7 | 15 | 83 | 178 | |
| G X4S ° - G X4H | 10 | 20 | 118 | 237 | |
| G X5S ° - G X5H | 12 | 30 | 142 | 356 | |

* Available also in Low NOx version
* Disponibili anche in versione Low NOx

° Available also in special version 24 Volts
° Disponibili anche in versione speciale 24 Volts

FIRING RATES / OVERALL DIMENSIONS (mm) - CAMPO DI LAVORO / DIMENSIONI (mm)



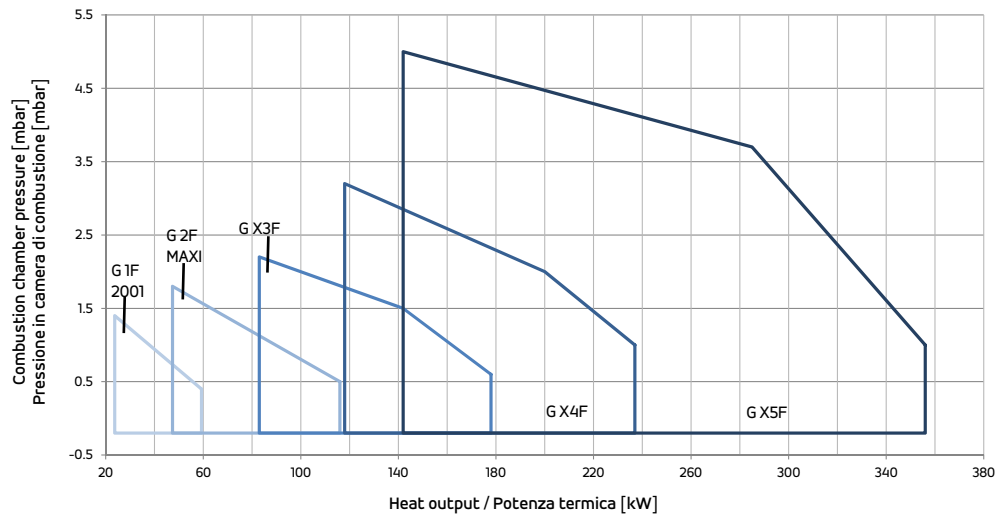
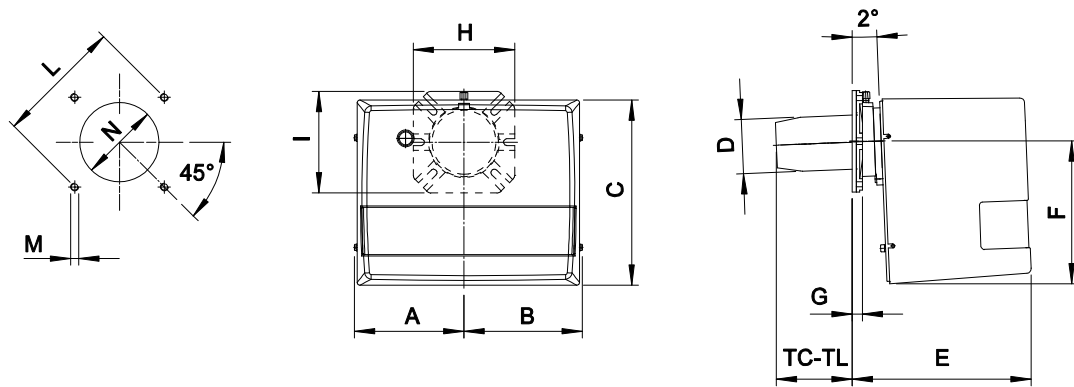
| MODEL MODELLO | A | B | C | D | E | F | G | H | I | L min | L * | L max | M | N min | N * | N max | TC | TL |
|------------------|-----|-----|-----|-----|-----|-----|----|-----|-----|-------|-----|-------|-----|-------|-----|-------|-----|-----|
| G 0... 2001 | 137 | 137 | 240 | 80 | 223 | 169 | 15 | 150 | 150 | 130 | 150 | 170 | M8 | 90 | 110 | 130 | 112 | 152 |
| G 0...2003 ** | 137 | 137 | 240 | 83 | 223 | 169 | 15 | 150 | 150 | 130 | 150 | 170 | M8 | 90 | 110 | 130 | 112 | 152 |
| G 1... 2001 | 157 | 170 | 275 | 80 | 265 | 210 | 15 | 150 | 150 | 130 | 150 | 170 | M8 | 90 | 110 | 130 | 112 | 152 |
| G 1...2003 | 157 | 170 | 275 | 83 | 265 | 210 | 15 | 150 | 150 | 130 | 150 | 170 | M8 | 90 | 110 | 130 | 112 | 152 |
| G 2...MAXI | 157 | 170 | 275 | 90 | 265 | 210 | 15 | 150 | 150 | 130 | 150 | 170 | M8 | 100 | 110 | 130 | 107 | 147 |
| G X3... | 182 | 192 | 318 | 110 | 306 | 248 | 17 | 200 | 200 | 160 | 170 | 226 | M10 | 120 | 130 | 140 | 130 | 250 |
| G X4... | 182 | 192 | 318 | 124 | 306 | 248 | 17 | 200 | 200 | 170 | 205 | 226 | M10 | 130 | 140 | 160 | 130 | 250 |
| G X5... | 210 | 218 | 400 | 130 | 461 | 310 | 18 | 200 | 200 | 205 | 220 | 226 | M10 | 140 | 150 | 180 | 215 | 335 |

* Suggested/Consigliato
** TxC = 77



| 1 STAGE for bakery ovens MONOSTADIO per forni da pane | kg/h | | kW | | ⚡ |
|--|------|-----|------|------|----|
| | min | max | min | max | |
| G 1 F 2001 | 2 | 5 | 23,7 | 59,3 | 1F |
| G 2 F MAXI | 4 | 9,8 | 47,4 | 116 | |
| G X3 F | 7 | 15 | 83 | 178 | |
| G X4 F | 10 | 20 | 118 | 237 | |
| G X5 F | 12 | 30 | 142 | 356 | |

FIRING RATES / OVERALL DIMENSIONS (mm) - CAMPO DI LAVORO / DIMENSIONI (mm)



| MODEL MODELLO |
|------------------|
|------------------|

* Suggested/Consigliato

| | A | B | C | D | E | F | G | H | I | L min | L * | L max | M | N min | N * | N max | TC | TL |
|------------|-----|-----|-----|-----|-----|-----|----|-----|-----|-------|-----|-------|-----|-------|-----|-------|-----|-----|
| G 1 F | 157 | 170 | 275 | 80 | 265 | 210 | 15 | 150 | 150 | 130 | 150 | 170 | M8 | 90 | 110 | 130 | 112 | 152 |
| G 2 F MAXI | 157 | 170 | 275 | 90 | 265 | 210 | 15 | 150 | 150 | 130 | 150 | 170 | M8 | 100 | 110 | 130 | 107 | 147 |
| G X3 F | 182 | 192 | 318 | 110 | 306 | 248 | 17 | 200 | 200 | 160 | 170 | 226 | M10 | 120 | 130 | 140 | 130 | 250 |
| G X4 F | 182 | 192 | 318 | 124 | 306 | 248 | 17 | 200 | 200 | 170 | 205 | 226 | M10 | 130 | 140 | 160 | 130 | 250 |
| G X5 F | 210 | 218 | 400 | 130 | 461 | 310 | 18 | 200 | 200 | 205 | 220 | 226 | M10 | 140 | 150 | 180 | 215 | 335 |