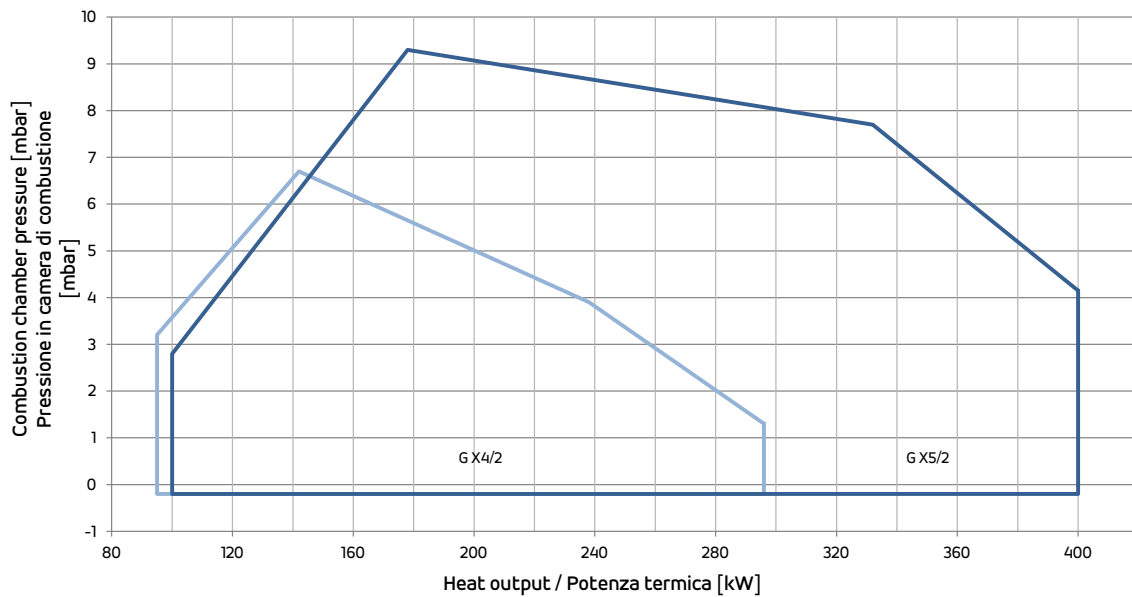
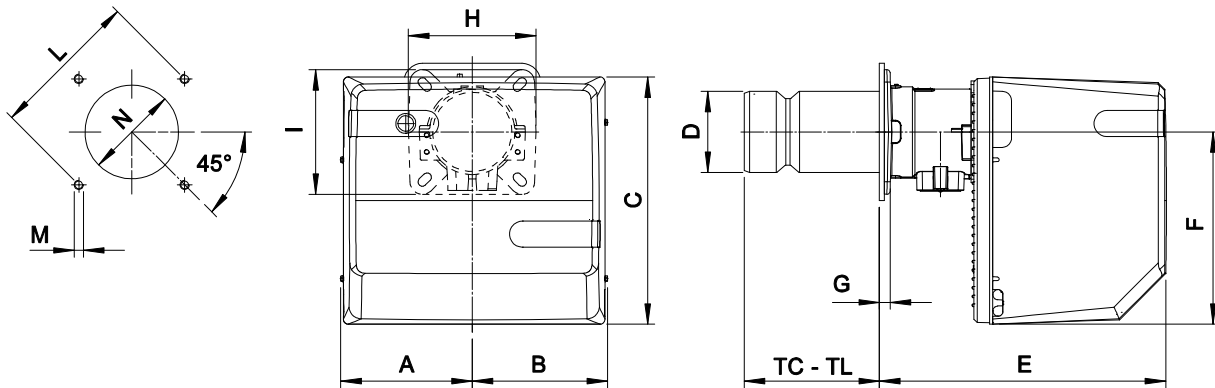




2 STAGES BISTADIO	kg/h		kW		1F
	min	max	min	max	
GX 4/2	8/12	25	94,9/142	296	
GX 5/2	8,5/15	33,7	101/178	400	

FIRING RATES / OVERALL DIMENSIONS (mm) - CAMPO DI LAVORO / DIMENSIONI (mm)



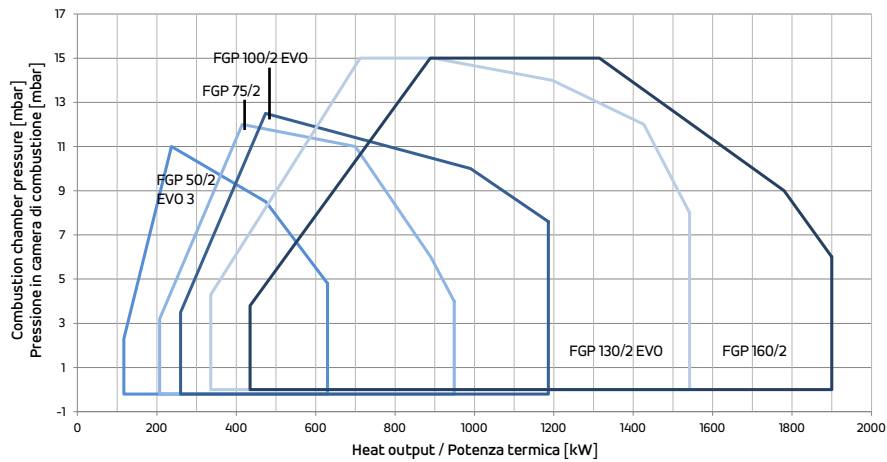
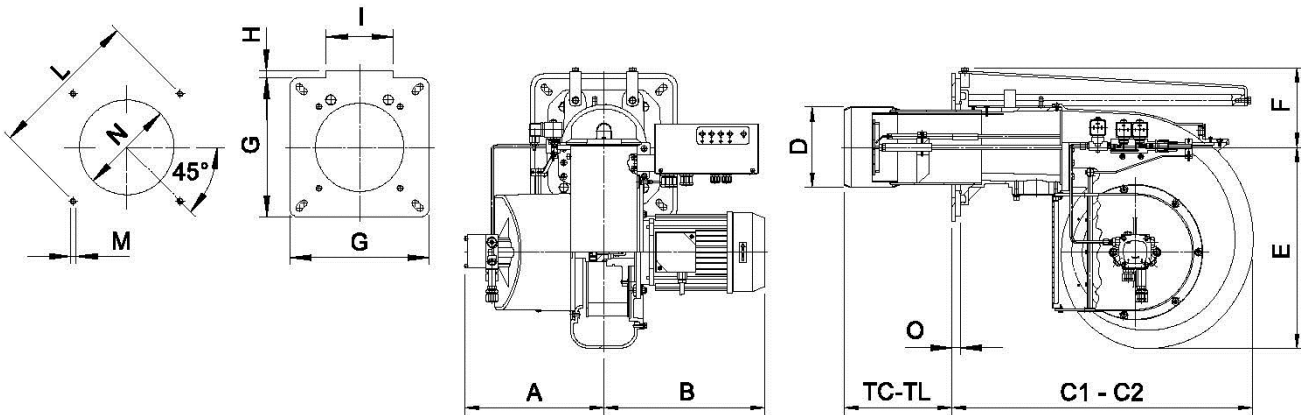
MODEL MODELLO	* Suggested/Consigliato																	
	A	B	C	D	E	F	G	H	I	L min	L*	L max	M	N min	N*	N max	TC	TL
GX4/2	182	192	318	124	306	248	17	200	200	170	205	226	M10	130	140	160	130	250
GX5/2	210	218	400	130	461	310	18	200	200	205	220	226	M10	140	150	180	215	335



2 STAGES BISTADIO	kg/h		kW		
	min	max	min	max	
FGP 50/2 EVO 3	9,9/20	53	117/237	630	3F
FGP 75/2 *	17,5/35	80	207/415	949	
FGP 100/2 EVO *	21,8/40	100	258,6/474,4	1186	
FGP 130/2 EVO	28,3/60	130	336/712	1542	
FGP 160/2	36,7/75	160	435/889	1900	

* Available also in Low NOx version
* Disponibili anche in versione Low NOx

FIRING RATES / OVERALL DIMENSIONS (mm) - CAMPO DI LAVORO / DIMENSIONI (mm)



* Suggested/Consigliato

C2= overall dimension with the burner out in position of maintenance
C2= ingombro a bruciatore arretrato in posizione di manutenzione

MODEL MODELLO	A	B	C1	C2	D	E	F	G	H	I	L min	L max	M	N min*	N max	O	TC	TL
FGP 50/2 EVO 3	187	314	558	-	150	417	100	200	0	0	205	226	M10	160	180	20	250	335
FGP 75/2	250	310	660	1060	165	327	171	300	10	144	310	368	M12	180	250	18	250	335
FGP 100/2 EVO	300	350	670	1170	175	438	173	300	0	0	340	368	M12	190	250	18	235	370
FGP 130/2 EVO	350	380	820	1400	212	438	213	320	40	183	340	368	M14	230	250	23	200	400
FGP 160/2	350	380	820	1400	212	438	213	320	40	183	340	368	M14	230	250	23	200	400