

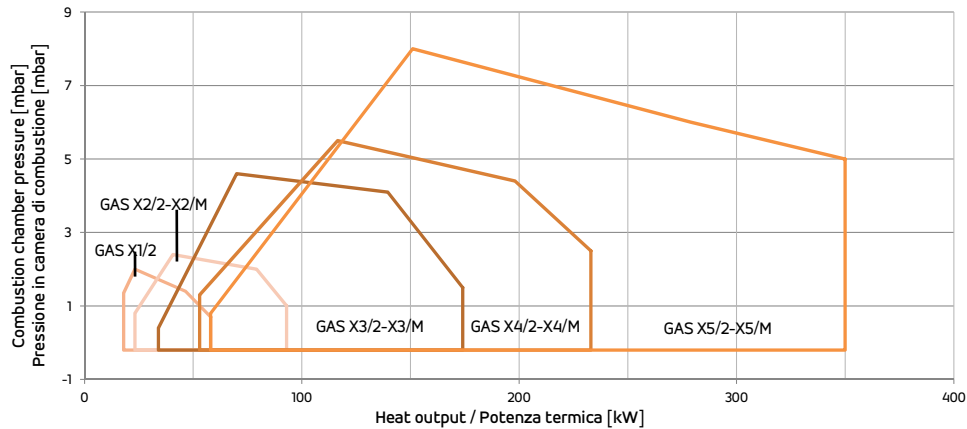
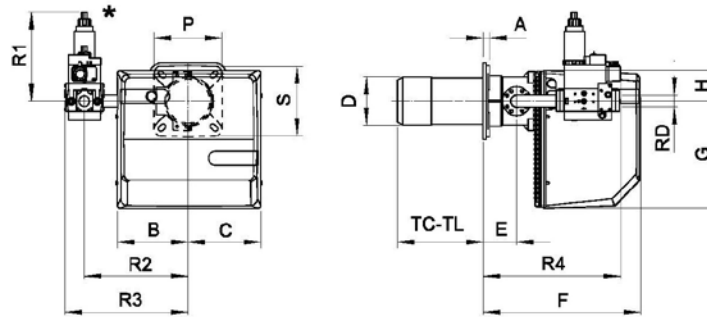


2 STAGES BISTADIO	PROGRESSIVE & MODULANTING Progressivi e modulanti	kcal/h		kW		⚡
		min	max	min	max	
GAS X 1/2	-	20.000	50.000	18/23,2	58,1	1F
GAS X 2/2 *	GAS X 2/M *	35.000	80.000	24,4/40,7	93	
GAS X 3/2 *	GAS X 3/M *	60.000	150.000	34,9/69,8	174	
GAS X 4/2 *	GAS X 4/M *	100.000	200.000	64/116	232	
GAS X 5/2 *	GAS X 5/M *	130.000	300.000	81,4/151	349	

* Available also in Low NOx version
* Disponibili anche in versione Low NOx

FIRING RATES / OVERALL DIMENSIONS (mm) - CAMPO DI LAVORO / DIMENSIONI (mm)

GAS X5/2



MODEL MODELLO	* Suggested/Consigliato																							
	A	B	C	D	E	F	G	H	L	L*	L	M	N	N*	N	P	S	TC	TL	R1	R2	R3	R4	RD
GAS X 1/2 CE - D1/2" S	15	162	175	90	45	313	210	65	130	150	170	M8	100	110	130	150	150	90	150	132	200	275	258	1/2"
GAS X2/2 CE - D3/4" FS25	15	162	175	90	45	313	210	65	130	150	170	M8	100	110	130	150	150	90	150	138	220	351	275	1"
GAS X3/2 CE - D1" S	16	185	195	108	52	340	248	70	150	170	170	M8	120	130	140	200	160	130	250	152	280	337	291	1"
GAS X4/2 CE - D1" S	20	185	195	125	78	368	248	70	170	205	226	M10	130	140	160	200	200	160	280	158	280	337	315	1"
GAS X5/2 CE - D1" S	20	207	213	138	98	462	310	90	205	205	226	M10	150	150	180	200	205	250	335	255	305	362	363	1"
GAS X5/2 CE - CT D1" S	20	207	213	138	98	462	310	90	205	205	226	M10	150	150	180	200	205	250	335	255	305	480	403	1"
GAS X5/2 CE - D1" 1/4 S	20	207	213	138	98	462	310	90	205	205	226	M10	150	150	180	200	205	250	335	255	305	362	363	1" 1/4
GAS X5/2 CE - CT D1" 1/4 S	18	207	213	138	98	462	310	90	205	205	226	M10	150	150	180	200	205	250	335	255	305	480	450	1" 1/4
GAS X2/M CE - D3/4" S	15	162	200	90	45	305	211	65	130	150	170	M8	100	110	130	150	150	90	150	178	220	262	346	3/4"
GAS X3/M CE - D1" S	20	185	224	108	56	344	248	70	150	170	170	M8	120	130	140	200	160	130	250	212	280	338	300	1"
GAS X4/M CE - D1" S	20	185	224	125	80	371	248	70	170	205	226	M10	130	140	160	200	200	160	280	218	280	338	323	1"
GAS X5/M CE - D1" S	20	207	213	138	98	462	310	165	205	205	226	M10	150	150	180	200	205	250	335	160	305	362	515	1"
GAS X5/M CE - D1" 1/4 S	20	207	213	138	98	462	310	165	205	205	226	M10	150	150	180	200	205	250	335	160	305	362	515	1" 1/4



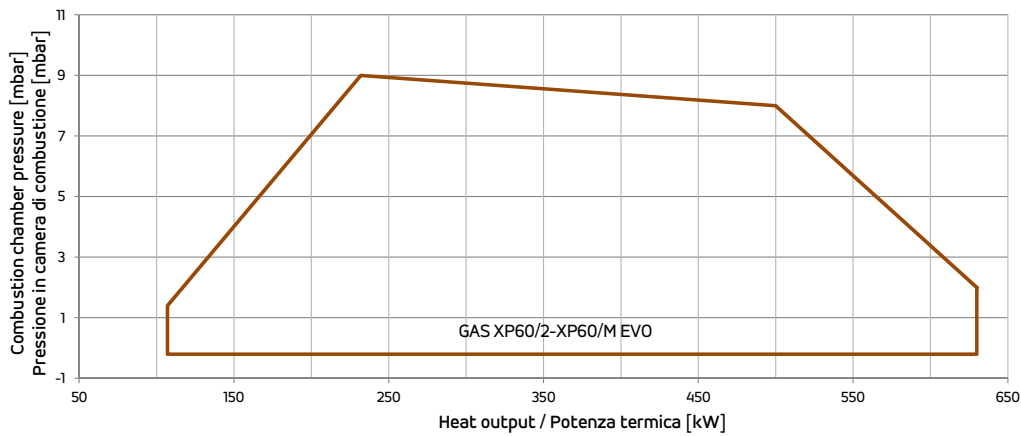
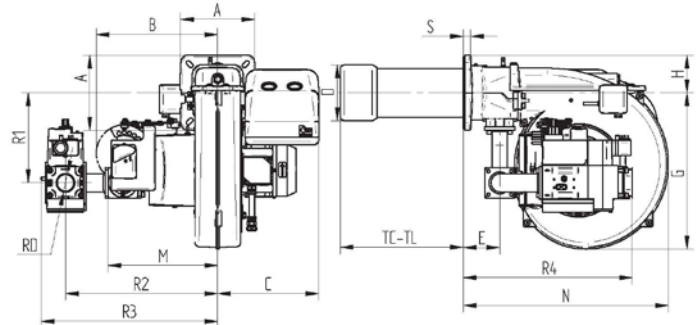
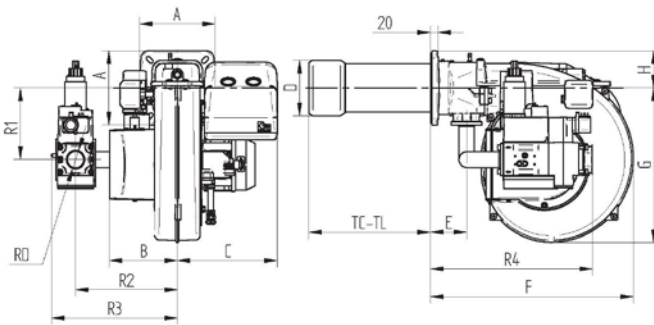
2 STAGES BISTADIO	PROGRESSIVE & MODULATING PROGRESSIVI E MODULANTI	kcal/h		kW		
		min	max	min	max	
-	GAS XP 40/M *	130.000	300.000	64/151	348	1F
GAS XP 60/2 EVO *	GAS XP 60/M EVO *	200.000	542.000	116/232	630	3F

* Available also in Low NOx version
* Disponibili anche in versione Low NOx

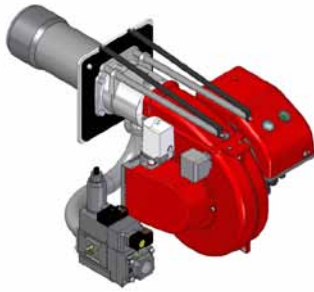
FIRING RATES / OVERALL DIMENSIONS (mm) - CAMPO DI LAVORO / DIMENSIONI (mm)

MOD. GAS XP 60/2 EVO

MOD. GAS XP 60/M EVO



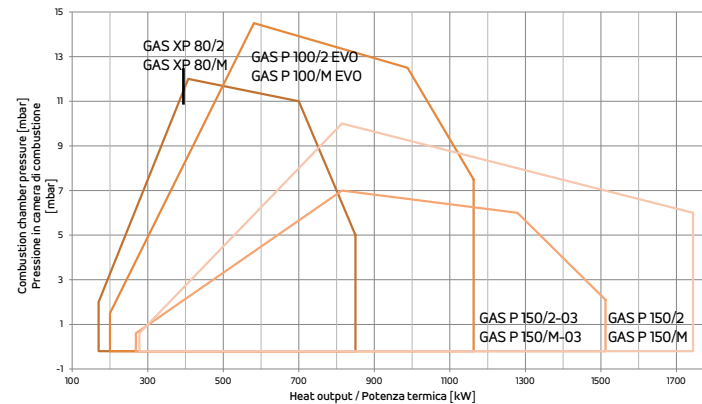
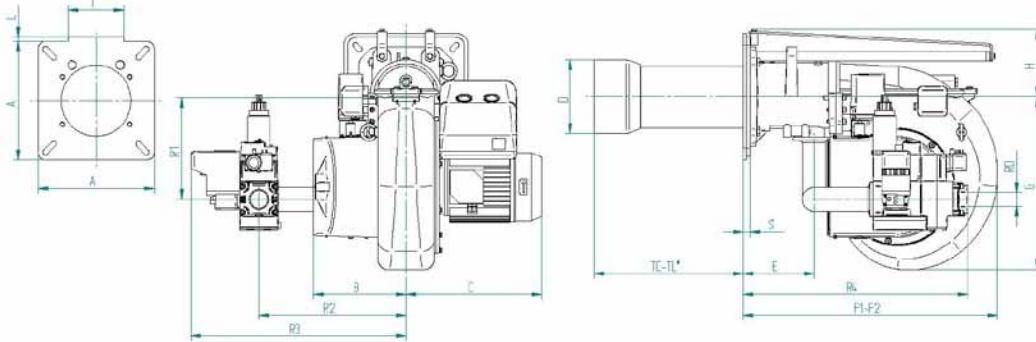
MODEL MODELLO	* Suggested/Consigliato																		
	A	B	C	D	E	F	G	H	L min*	L max	N min*	N max	TC	TL	R1	R2	R3	R4	RD
GAS XP 40/M - D1" - S	200	298	275	138	98	500	327	110	160	180	205	226	250	335	202	414	468	459	1"
GAS XP 40/M - D1" 1/4 - S	200	298	275	138	98	500	327	110	160	180	205	226	250	335	202	414	468	459	1" 1/4
GAS XP 40/M - D1" 1/2 - S	200	298	275	138	98	500	327	110	160	180	205	226	250	335	202	414	468	459	1" 1/2
GAS XP 60/2 CE EVO - D1" - S	200	188	276	150	99	558	416	100	160	180	205	226	250	335	193	280	338	431	1"
GAS XP 60/2 CE EVO - D1" 1/4 - S	200	188	276	150	99	558	416	100	160	180	205	226	250	335	193	280	338	431	1" 1/4
GAS XP 60/2 CE EVO - D1" 1/2 - S	200	188	276	150	99	558	416	100	160	180	205	226	250	335	193	280	346	446	1" 1/2
GAS XP 60/M CE EVO - D1" - S	200	330	275	150	99	558	417	100	160	180	205	226	250	335	240	414	472	444	1"
GAS XP 60/M CE EVO - D1" 1/4 - S	200	330	275	150	99	558	417	100	160	180	205	226	250	335	240	414	472	444	1" 1/4
GAS XP 60/M CE EVO - D1" 1/2 - S	200	330	275	150	99	558	417	100	160	180	205	226	250	335	240	414	480	460	1" 1/2



2 STAGES BISTADIO	PROGRESSIVE & MODULATING PROGRESSIVI E MODULANTI	kcal/h		kW		3F
		min	max	min	max	
GAS XP 80/2 *	GAS XP 80/M *	350.000	650.000	170/407	850	
GAS P 100/2 EVO *	GAS P 100/M EVO *	500.000	1.000.000	200/581	1163	
GAS P 150/2 *	GAS P 150/M *	700.000	1.500.000	279/814	1744	

* Available also in Low NOx version
* Disponibili anche in versione Low NOx

FIRING RATES / OVERALL DIMENSIONS (mm) - CAMPO DI LAVORO / DIMENSIONI (mm)



F2= overall dimension with the burner out in position of maintenance
F2= ingombro a bruciatore arretrato in posizione di manutenzione

MODEL MODELLO	A	B	C	D	E	F1	F2	G	H	I	L	M	N min	N max	O min*	O max	TC	TL	S	R1	R2	R3	R4	RD
GAS XP 80/2 CE - D1" 1/4 - S	300	188	276	175	168	660	1100	327	171	144	10	M12	310	368	185	250	250	385	18	260	380	438	549	1" 1/4
GAS XP 80/2 CE - D1" 1/2 - S	300	188	276	175	168	660	1100	327	171	144	10	M12	310	368	185	250	250	385	18	260	380	430	564	1" 1/2
GAS XP 80/2 CE - D2" - S	300	188	276	175	168	660	1100	327	171	144	10	M12	310	368	185	250	250	385	18	260	380	430	564	2"
GAS P 100/2 CE EVO - D1" 1/4 - S	300	238	350	185	184	660	1160	438	173	0	0	M12	340	368	195	250	250	385	18	260	380	438	549	1" 1/4
GAS P 100/2 CE EVO - D1" 1/2 - S	300	238	350	185	184	660	1160	438	173	0	0	M12	340	368	195	250	250	385	18	260	380	430	564	1" 1/2
GAS P 100/2 CE EVO - D2" - S	300	238	350	185	184	660	1160	438	173	0	0	M12	340	368	195	250	250	385	18	260	380	430	564	2"
GAS P 150/2 CE - D1" 1/2 - S	320	238	376	209	193	800	1380	438	213	183	40	M14	340	368	220	250	280	400	23	284	380	556	589	1" 1/2
GAS P 150/2 CE - D2" S	320	238	376	209	193	800	1380	438	213	183	40	M14	340	368	220	250	280	400	23	284	380	552	600	2"
GAS XP 80/M CE - D1" 1/4 - S	300	331	362	175	168	660	1100	327	171	144	10	M12	310	368	185	250	250	385	18	260	415	473	513	1" 1/4
GAS XP 80/M CE - D1" 1/2 - S	300	331	362	175	168	660	1100	327	171	144	10	M12	310	368	185	250	250	385	18	260	415	465	528	1" 1/2
GAS XP 80/M CE - D2" - S	300	331	362	175	168	660	1100	327	171	144	10	M12	310	368	185	250	250	385	18	260	415	465	528	2"
GAS P 100/M CE EVO - D1" 1/4 - S	300	382	376	185	184	660	1160	438	173	0	0	M12	340	368	195	250	250	385	18	260	460	520	529	1" 1/4
GAS P 100/M CE EVO - D1" 1/2 - S	300	382	376	185	184	660	1160	438	173	0	0	M12	340	368	195	250	250	385	18	260	460	512	544	1" 1/2
GAS P 100/M CE EVO - D2" - S	300	382	376	185	184	660	1160	438	173	0	0	M12	340	368	195	250	250	385	18	260	460	512	544	2"
GAS P 100/M CE EVO - DN65-FS65	300	382	376	185	184	660	1160	438	173	0	0	M12	340	368	195	250	250	385	18	260	500	592	580	DN65
GAS P 150/M CE - D2" - S	320	382	376	209	193	800	1380	438	213	183	40	M14	340	368	220	250	280	400	23	228	510	685	540	2"
GAS P 150/M CE - DN65-FS65	320	382	376	209	193	800	1380	438	213	183	40	M14	340	368	220	250	280	400	23	228	510	688	590	DN65
GAS P 150/M CE - DN80-FS80	320	382	376	209	193	800	1380	438	213	183	40	M14	340	368	220	250	280	400	23	228	550	741	630	DN80