

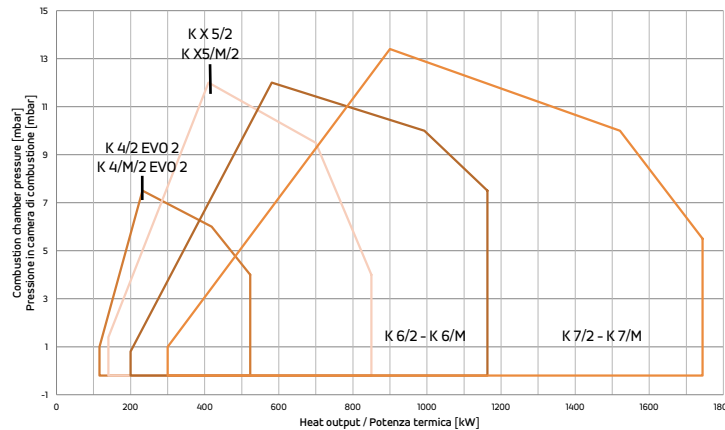
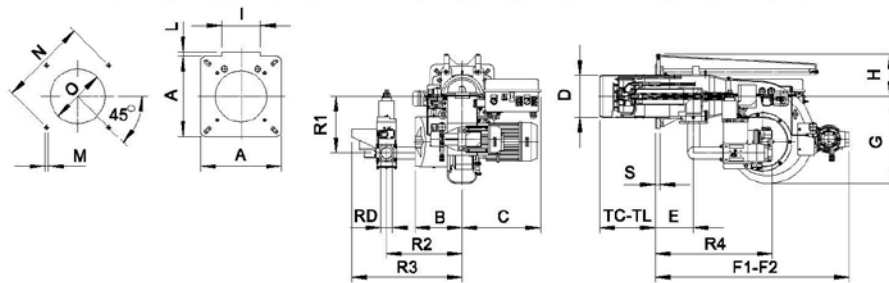
Gas/Light Oil - Gas/Gasolio



2 STAGES BISTADIO	PROGRESSIVE & MODULATING	kcal/h		kW		
		min	max	min	max	
K 3/2	-	100.000	200.000	63,9/116	232	1F
K 4/2 EVO 2	K 4/M/2 EL EVO 2	200.000	450.000	116/232	523	3F
K X 5/2 *	K X 5/M/2 EL *	350.000	730.000	140/410	850	
K 6/2	K 6/M	500.000	1.000.000	200/581	1163	
K 7/2	K 7/M *	774.000	1.500.000	300/900	1744	

\* Available also in Low NOx version  
 \* Disponibili anche in versione Low NOx

FIRING RATES / OVERALL DIMENSIONS (mm) - CAMPO DI LAVORO / DIMENSIONI (mm)

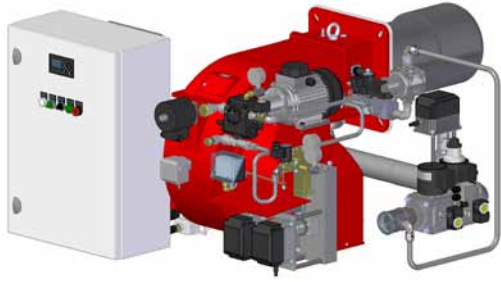


\* Suggested/Consigliato

MODEL MODELLO	A	B	C	D	E	F1	F2	G	H	I	L	M	N min	N max	O min*	O max	TC	TL	S	R1	R2	R3	R4	RD
K 3/2 - D1" - S	200	188	358	138	98	493	-	327	110	0	0	M10	205	226	150	-	250	350	18	171	280	411	354	1"
K 4/2 EVO 2 - D1" S	200	188	345	150	99	734	-	416	110	0	0	M10	205	226	160	-	250	350	20	193	280	338	431	1"
K 4/2 EVO 2 - D1" 1/4 - S	200	188	345	150	99	734	-	416	110	0	0	M10	205	226	160	-	250	350	20	193	280	338	431	1" 1/4
K 4/2 EVO 2 - D1" 1/2 - S	200	188	345	150	99	734	-	416	110	0	0	M10	205	226	160	-	250	350	20	193	280	346	446	1" 1/2
K 4/2 EVO 2 - D2" S	200	188	345	150	99	734	-	416	110	0	0	M10	205	226	160	-	250	350	20	193	280	346	446	2"
K X 5/2 - D1" - S	300	236	365	175	168	840	1280	327	171	144	10	M12	310	368	185	250	250	315	18	260	380	438	548	1"
K X 5/2 - D1" 1/4 - S	300	236	365	175	168	840	1280	327	171	144	10	M12	310	368	185	250	250	315	18	260	380	438	548	1" 1/4
K X 5/2 - D1" 1/2 - S	300	236	365	175	168	840	1280	327	171	144	10	M12	310	368	185	250	250	315	18	260	536	430	576	1" 1/2
K X 5/2 - D2" - S	300	236	365	175	168	840	1280	327	171	144	10	M12	310	368	185	250	250	315	18	260	536	430	576	2"
K 6/2 - D2" - S	320	238	393	210	193	980	1560	438	213	183	40	M14	340	368	220	250	280	400	23	283	552	615	2"	
K 7/2 - D2" - S	320	238	393	210	193	980	1560	438	213	183	40	M14	340	368	220	250	280	400	23	283	552	615	2"	
K 6/M - D2" - FS50	320	380	393	209	193	1037	1617	438	267	183	40	M14	340	368	220	250	280	400	23	228	510	673	552	2"
K 6/M - DN65 - FS65	320	380	393	209	193	1037	1617	438	267	183	40	M14	340	368	220	250	280	400	23	228	510	665	586	DN65
K 6/M - DN80 - FS80	320	380	393	209	193	1037	1617	438	267	183	40	M14	340	368	220	250	280	400	23	228	550	720	626	DN80
K 7/M - D2" - FS50	320	380	393	209	193	1037	1617	438	267	183	40	M14	340	368	220	250	280	400	23	228	510	673	552	2"
K 7/M - DN65 - FS65	320	380	393	209	193	1037	1617	438	267	183	40	M14	340	368	220	250	280	400	23	228	510	665	586	DN65
K 7/M - DN80 - FS80	320	380	393	209	193	1037	1617	438	267	183	40	M14	340	368	220	250	280	400	23	228	550	720	626	DN80

F2= overall dimension with the burner out in position of maintenance  
 F2= ingombro a bruciatore arretrato in posizione di manutenzione

## Gas/Light Oil - Gas/Gasolio

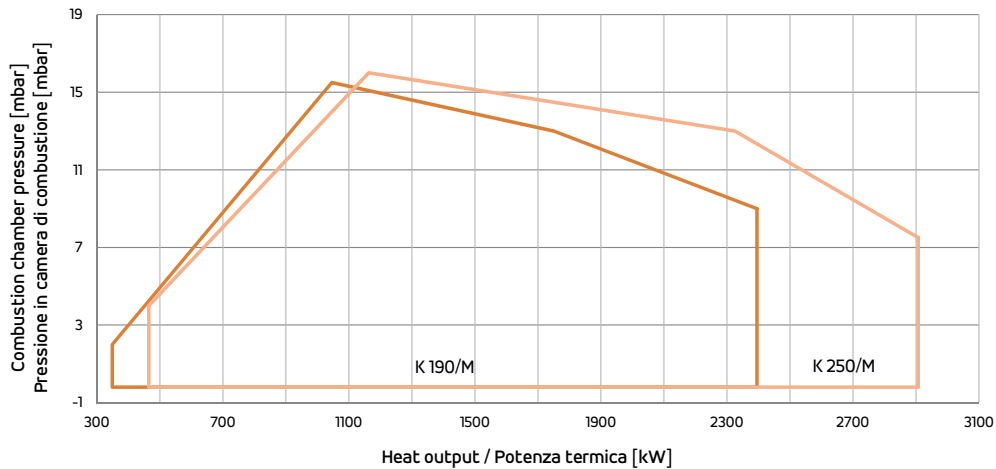
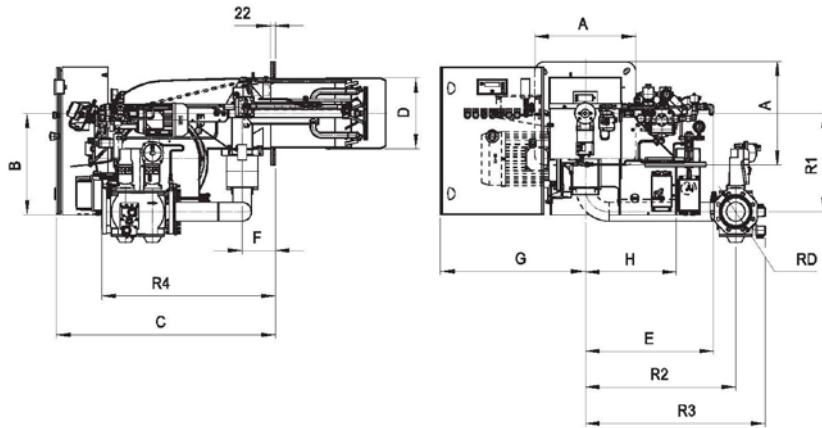


PROGRESSIVE & MODULATING PROGRESSIVI E MODULANTI	kcal/h		kW		3F
	min	max	min	max	
K 190/M EL * °	900.000	2.060.000	349/1046	2395	
K 250/M EL * °	1.000.000	2.500.000	465/1163	2907	

\* Available also in Low NOx version  
\* Disponibili anche in versione Low NOx

° Available also special versions with INVERTER  
° Fornibili anche in versioni speciali con INVERTER

### FIRING RATES / OVERALL DIMENSIONS (mm) - CAMPO DI LAVORO / DIMENSIONI (mm)



MODEL MODELLO	* Suggested/Consigliato																			
	A	B	C	D	TL	F	G	H	I min	I*	I max	M	N min	N*	N max	R1	R2	R3	R4	RD
K 190/M EL - D2" - FS50	360	460	900	265	481	145	545	363	280	280	320	M14	396	424	438	600	610	700	254	2"
K 190/M EL - DN65 - FS65	360	460	900	265	481	145	545	363	280	280	320	M14	396	424	438	688	630	730	254	DN65
K 190/M EL - DN80 - FS80	360	460	900	265	481	145	545	363	280	280	320	M14	396	424	438	708	630	745	254	DN80
K 190/M EL - DN100 - FS100	360	460	900	265	481	145	545	363	280	280	320	M14	396	424	438	748	630	752	254	DN100
K 250/M EL - D2" - FS50	360	460	900	265	481	145	545	363	280	280	320	M14	396	424	438	600	610	700	254	2"
K 250/M EL - DN65 - FS65	360	460	900	265	481	145	545	363	280	280	320	M14	396	424	438	688	630	730	254	DN65
K 250/M EL - DN80 - FS80	360	460	900	265	481	145	545	363	280	280	320	M14	396	424	438	708	630	745	254	DN80
K 250/M EL - DN100 - FS100	360	460	900	265	481	145	545	363	280	280	320	M14	396	424	438	748	630	752	254	DN100

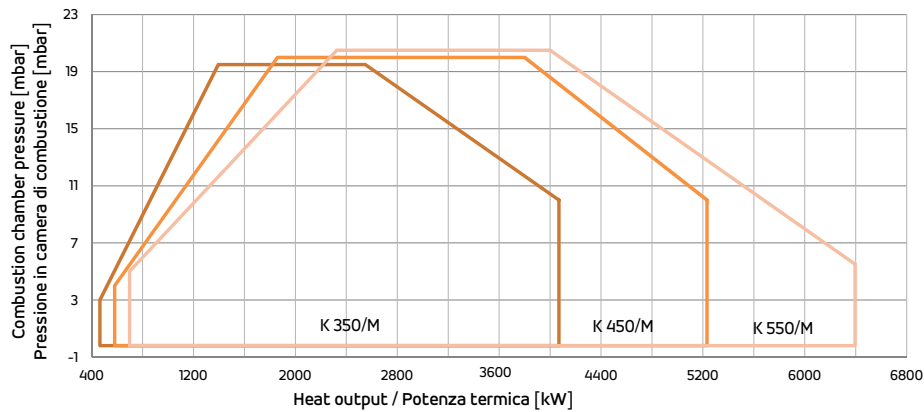
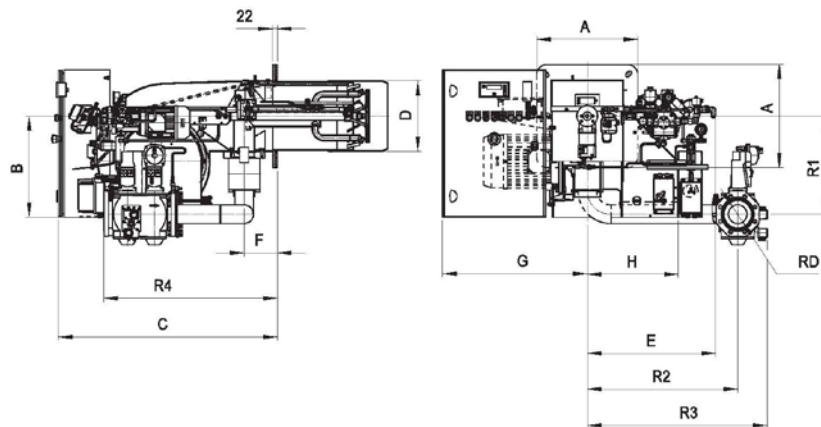
## Gas/Light Oil - Gas/Gasolio



PROGRESSIVE & MODULATING PROGRESSIVI E MODULANTI	kcal/h		kW		⚡
	min	max	min	max	
K 350/M EL * °	1.200.000	3.500.000	465/1395	4070	3F
K 450/M EL * °	1.600.000	4.500.000	581/1860	5232	
K 550/M EL * °	2.000.000	5.500.000	698/2325	6395	

- \* Available also in Low NOx version
- \* Disponibili anche in versione Low NOx
- ° Available also special versions with INVERTER
- ° Fornibili anche in versioni speciali con INVERTER

### FIRING RATES / OVERALL DIMENSIONS (mm) - CAMPO DI LAVORO / DIMENSIONI (mm)



MODEL MODELLO	A	B	C	D	TL	F	G	H	I min	I*	I max	M	min	N*	max	R1	R2	R3	R4	RD
	K 350/M EL - D2" - FS50	490	481	1090	334	535	160	600	440	350	350	450	M14	552	552	580	740	795	935	317
K 350/M EL - DN65 - FS65	490	481	1090	334	535	160	600	440	350	350	450	M14	552	552	580	780	795	965	317	DN65
K 350/M EL - DN80 - FS80	490	481	1090	334	535	160	600	440	350	350	450	M14	552	552	580	800	795	980	317	DN80
K 350/M EL - DN100 - FS100	490	481	1090	334	535	160	600	440	350	350	450	M14	552	552	580	838	795	1010	317	DN100
K 450/M EL - D2" - FS50	490	481	1090	380	560	160	600	440	390	390	450	M14	552	552	580	740	795	935	317	D2"
K 450/M EL - DN65 - FS65	490	481	1090	380	560	160	600	440	390	390	450	M14	552	552	580	780	795	965	317	DN65
K 450/M EL - DN80 - FS80	490	481	1090	380	560	160	600	440	390	390	450	M14	552	552	580	800	795	980	317	DN80
K 450/M EL - DN100 - FS100	490	481	1090	380	560	160	600	440	390	390	450	M14	552	552	580	838	795	1010	317	DN100
K 550/M EL - D2" - FS50	490	481	1090	380	560	160	661	440	390	410	450	M14	552	552	580	740	795	935	317	D2"
K 550/M EL - DN65 - FS65	490	481	1090	380	560	160	661	440	390	410	450	M14	552	552	580	780	795	965	317	DN65
K 550/M EL - DN80 - FS80	490	481	1090	380	560	160	661	440	390	410	450	M14	552	552	580	800	795	980	317	DN80
K 550/M EL - DN100 - FS100	490	481	1090	380	560	160	661	440	390	410	450	M14	552	552	580	838	795	1010	317	DN100

\* Suggested/Consigliato

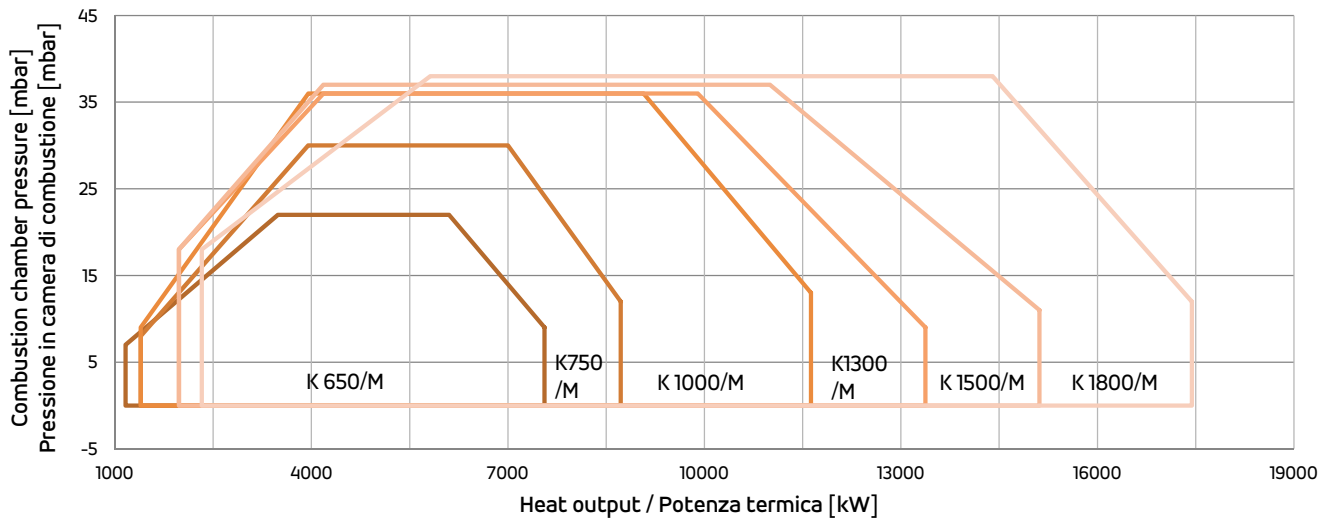
## Gas/Light Oil - Gas/Gasolio



PROGRESSIVE & MODULATING PROGRESSIVI E MODULANTI	kcal/h		kW		
	min	max	min	max	
K 650/M EL *	3.000.000	6.500.000	1163/3488	7558	3F
K 750/M EL *	3.400.000	7.500.000	1395/3953	8721	
K 1000/M EL *	3.400.000	10.000.000	1395/3953	11628	
K 1300/M EL *	3.600.000	11.500.000	1977/4186	13372	
K 1500/M EL *	3.600.000	13.000.000	1977/4186	15116	
K 1800/M EL *	5.000.000	15.000.000	2325/5815	17442	

\* Available also versions with INVERTER  
 \* Fornibili anche in versioni speciali con INVERTER

### FIRING RATES - CAMPO DI LAVORO



Please contact our Technical & Sales Offices for detailed technical data.

Vi invitiamo a contattare i ns. Uffici Tecnico-Commerciali per i dati tecnici di dettaglio.