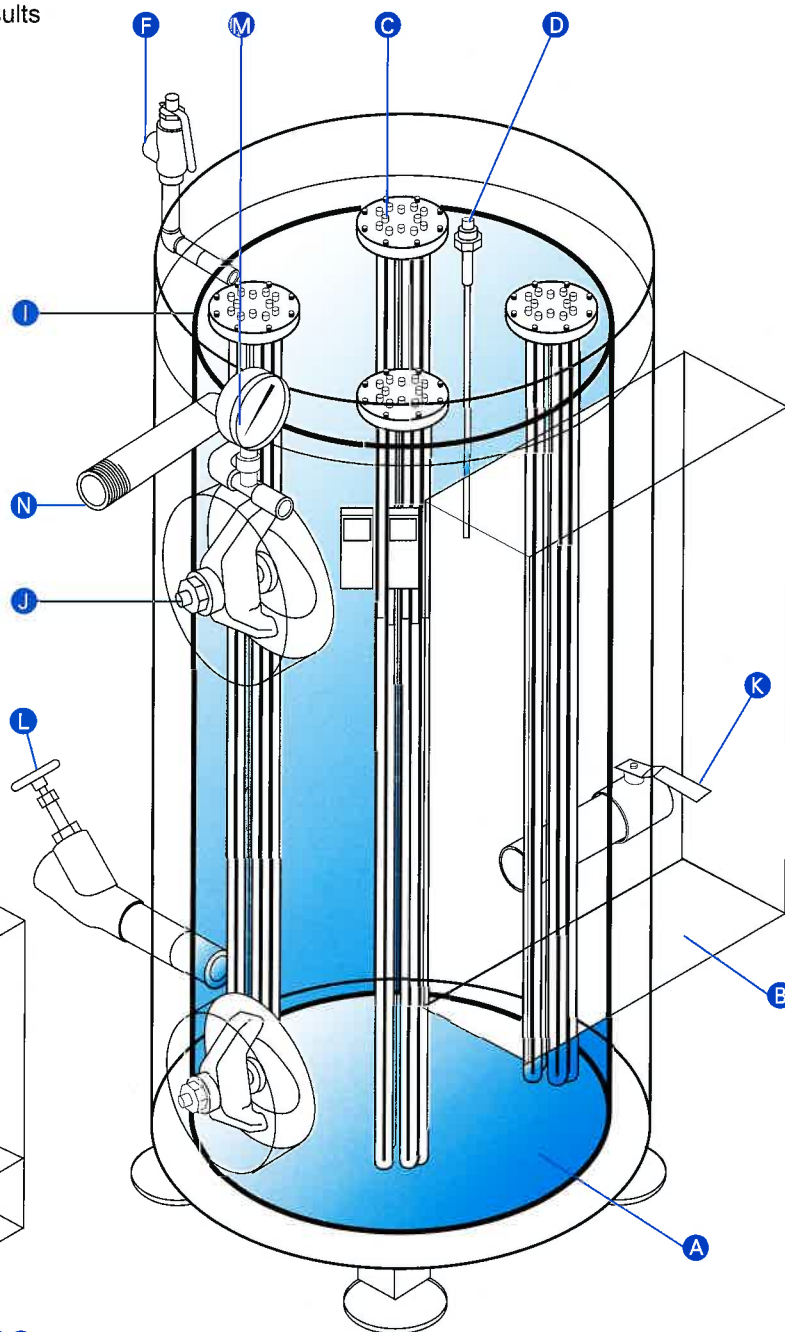


Component locations of the Fulton 12 to 1960 kW (1.2 to 196BHP) Hot Water Boilers

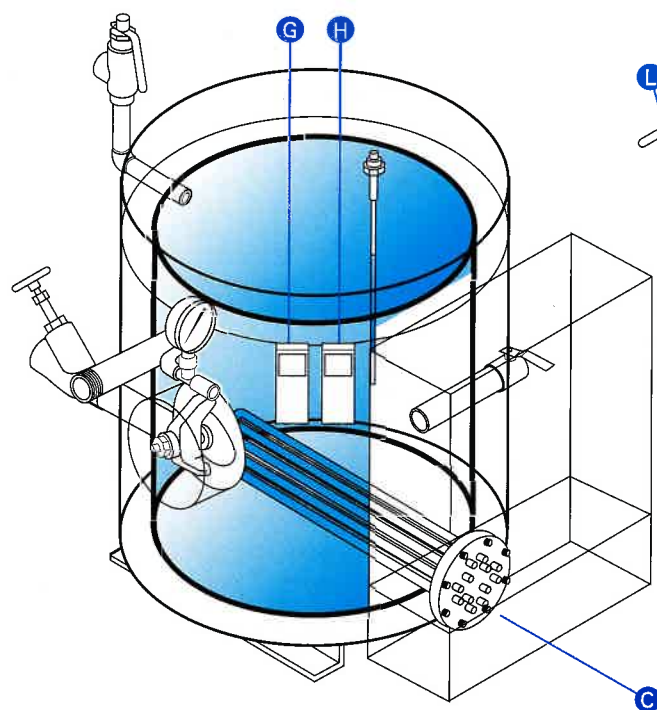
Operating Principle

The Fulton Electric Hot Water Boiler is designed for completely controlled forced circulation and even heating of water by multiple stainless steel low watt density elements. Forced even circulation of water is achieved by inducing incoming water to spin upward within the water vessel. The spinning water is evenly heated, eliminating stratification. This unique circulation method achieves an even flow of water across the elements. This results in low flux temperatures and long element life.

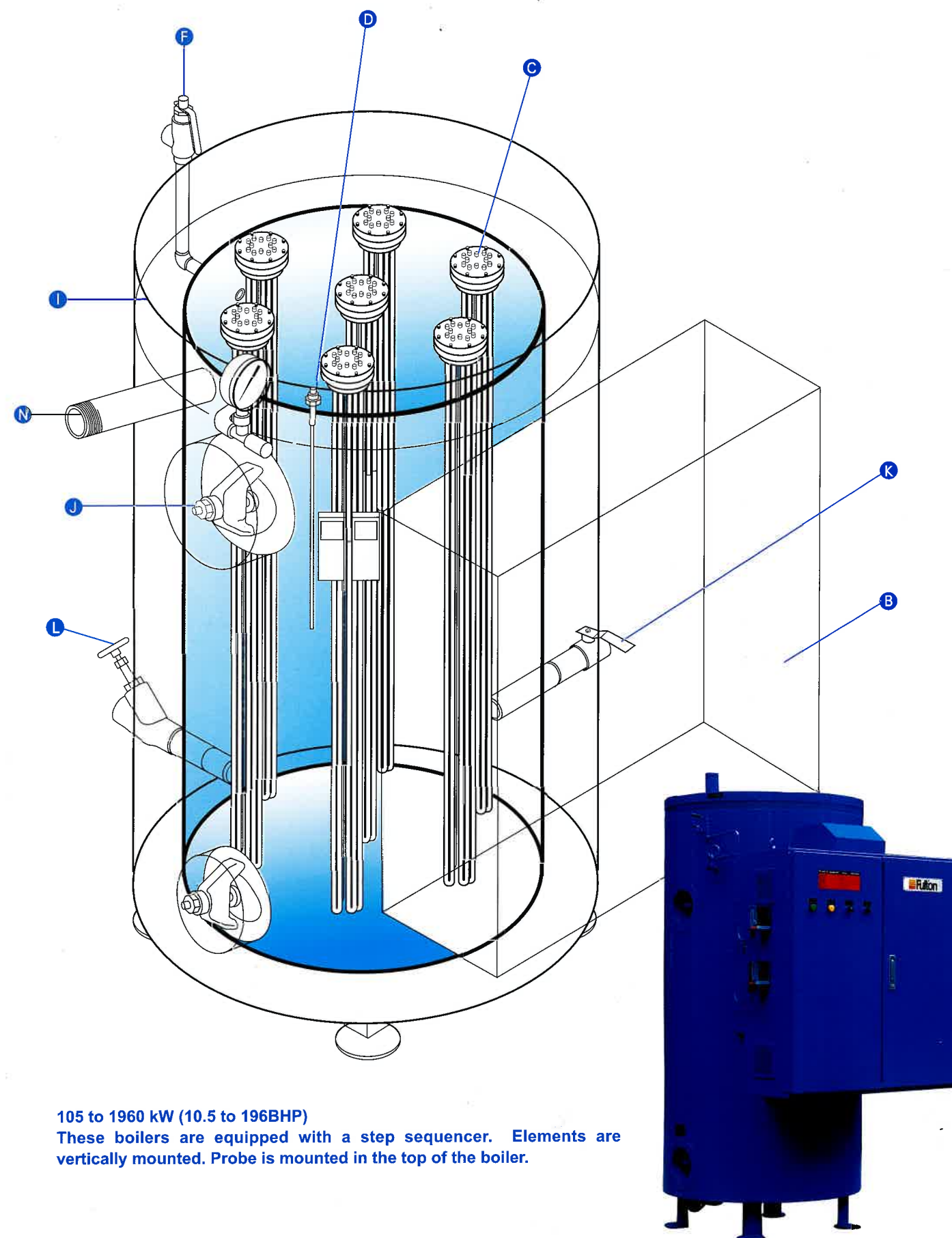
- A) Pressure Vessel Is Built To ASME Code
- B) Electric Control Panel Box
- C) Electric Heating Elements
- D) Low Water Cut Off Probe
- F) Safety Valve
- G) Operating temperature control
- H) High limit temperature control (w/manual reset)
- I) High Temperature Insulation Surrounds The Pressure Vessels
- J) Large (3"x 4") Easily Access Handholes
- K) Return Water Inlet
- L) Blowdown Valve
- M) Temperature gauge
- N) Water outlet



50-70 kW (5 to 7BHP)
Elements are vertically mounted.
Probe is mounted in the top of the boiler.



12 to 36 kW (1.2 to 3.6BHP)
Element(s) are horizontally mounted at the bottom of pressure vessel.
Probe is mounted in the top of the boiler.

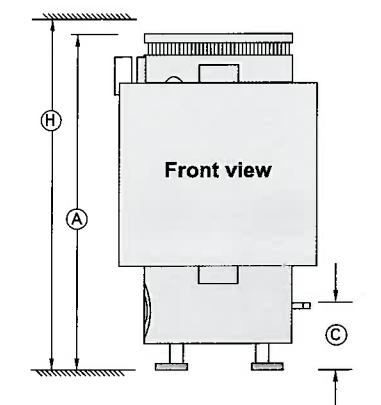
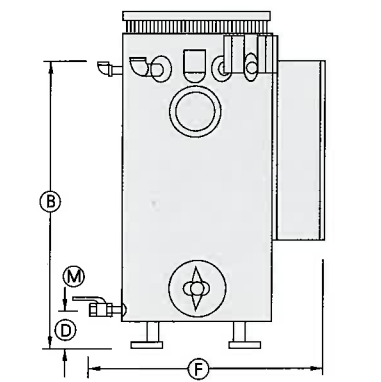
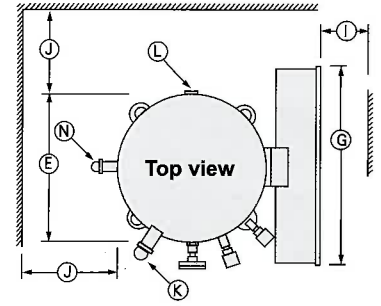


105 to 1960 kW (10.5 to 196BHP)
These boilers are equipped with a step sequencer. Elements are vertically mounted. Probe is mounted in the top of the boiler.

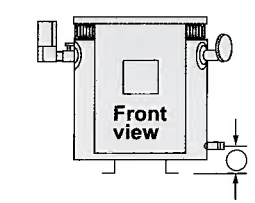
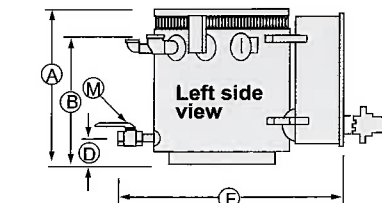
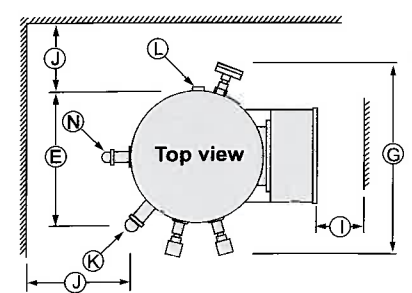
Fulton FB-W Hot Water Dimensions

Model FB-W		012	030	070	105	175	210	280	350	420	490	560	630	700	770	840	910	980	1140	1260	1400	1540	1680	1820	1960		
Unit size	kW	12	30	70	105	175	210	280	350	420	490	560	630	700	770	840	910	980	1140	1260	1400	1540	1680	1820	1960		
	HP	1.2	3.0	7.0	10.5	17.5	21	28	35	42	49	56	63	70	77	84	91	98	114	126	140	154	168	182	196		
Height																											
(A) Boiler Overall	inch	24	24	55	55	55	55	55	55	55	55	55	55	55	75	75	75	75	90.25	90.25	90.25	90.25	90.25	90.25	90.25	90.25	
	mm	610	610	1400	1400	1400	1400	1400	1400	1400	1400	1400	1400	1400	1905	1905	1905	1905	2292	2292	2292	2292	2292	2292	2292	2292	
(B) Hot Water Outlet	inch	18.25	18.25	40.50	40.50	40.25	45.30	45.30	45	45	44.75	44.75	44.50	44.50	58.25	58.25	58.25	58.25	64.25	64.25	64.25	63.25	63.25	63.25	63.25		
	mm	464	464	1156	1156	1149	1149	1149	1143	1143	1137	1137	1130	1130	1480	1480	1480	1480	1631	1631	1631	1606	1606	1606	1606		
(C) Return water Inlet	inch	4	4	9.5	9.5	9.5	9.5	9.5	9.5	9.5	9.5	9.5	9.5	9.5	11.25	11.25	11.25	11.25	13.75	13.75	13.75	13.75	13.75	13.75	13.75		
	mm	100	100	241	241	241	241	241	241	241	241	241	241	241	286	286	286	286	349	349	349	349	349	349	349		
(D) Blowdown Outlet	inch	4	4	6	6	6	6	6	6	6.5	6.5	6.5	7	7	6.5	6.5	6.5	6.5	11.25	11.25	11.25	11.25	11.25	11.25	11.25		
	mm	100	100	150	150	150	150	150	150	165	165	165	180	180	165	165	165	165	286	286	286	286	286	286	286		
Width & Depth																											
(E) Boiler Diameter	inch	20	20	17	24	28	28	36	40	40	44	44	50	50	63	63	63	63	74	74	74	74	74	74	74		
	mm	508	508	430	610	710	710	915	1015	1015	1120	1120	1270	1270	1600	1600	1600	1600	1880	1880	1880	1880	1880	1880	1880		
(F) Overall Depth Electric Panel to Blowdown	inch	49	49	41	41	48	48	60	64	64	68	68	74	74	83	83	83	83	90	90	90	102	102	102	102		
	mm	1245	1245	1041	1041	1219	1219	1524	1626	1626	1727	1727	1880	1880	2108	2108	2108	2108	2286	2286	2286	2591	2591	2591	2591		
(G) Boiler Width Overall	inch	32	32	40	40	44	44	48	72	72	72	72	72	72	73	73	73	73	73	73	73	84	84	84	84		
	mm	813	813	1016	1016	1118	1118	1219	1828	1828	1828	1828	1828	1828	1854	1854	1854	1854	1854	1854	1854	2134	2134	2134	2134		
Minimum Clearances																											
(H) Floor to Ceiling to remove elements	inch	NA	NA	95	95	95	95	95	95	95	95	95	95	95	119	119	119	119	139	139	139	139	139	139	139		
	mm	NA	NA	2415	2415	2415	2415	2415	2415	2415	2415	2415	2415	2415	3022	3022	3022	3022	3531	3531	3531	3531	3531	3531	3531		
(I) Front of Boiler	inch	24	24	32	32	34	34	36	36	36	36	36	36	36	36	36	36	36	36	36	36	36	36	36	36		
	mm	610	610	815	815	865	865	915	915	915	915	915	915	915	915	915	915	915	915	915	915	915	915	915	915		
(J) Sides & Rear of Boiler	inch	24	24	24	24	24	24	24	24	24	24	24	24	24	24	24	24	24	24	24	24	24	24	24	24		
	mm	610	610	610	610	610	610	610	610	610	610	610	610	610	610	610	610	610	610	610	610	610	610	610	610		
Boiler connection sizes																											
(K) Hot Water Outlet	inch	1.25	1.25	1.50	1.50	2	2	2	2.50	2.50	3	3	3	3	4	4	4	4	4	4	4	6	6	6	6		
	mm	32	32	40	40	50	50	50	65	65	75	75	75	75	100	100	100	100	100	100	100	152.4	152.4	152.4	152.4		
(L) Return water Inlet	inch	1.25	1.25	1.50	1.50	2	2	2	2.50	2.50	3	3	3	3	4	4	4	4	6	6	6	6	6	6	6		
	mm	32	32	40	40	50	50	50	65	65	75	75	75	75	100	100	100	100	152.4	152.4	152.4	152.4	152.4	152.4	152.4		
(M) Blowdown Outlet	inch	1	1	1	1	1.25	1.25	1.25	1.25	1.50	1.50	1.50	2	2	2	2	2	2	2	2	2	2	2	2	2		
	mm	25	25	25	25	32	32	32	32	40	40	40	51	51	51	51	51	51	51	51	51	51	51	51	51		
(N) Safety Valve	inch	1.25	1.25	1.25	1.25	1.25	1.25	1.25	1.25	1.25	2	2	2.5	2.5	2.5	2.5	2.5	2.5	2.5	2.5	2.5	2	2	2	2		
	mm	32	32	32	32	32	32	32	32	32	51	51	65	65	65	65	65	65	65	65	65	51	51	51	51		
Weight																											
Approx Shipping Weight	LB	420	450	580	950	1225	1225	1380	1850	1850	2000	2150	2300	2300	2561	2561	2561	2561	2800	2800	2800	4500	4500	4500	4500		
	KG	191	204	263	386	556	556	623	839	839	908	977	1043	1043	1164	1164	1164	1164	1273	1273	1273	2040	2040	2040	2040		
Specifications																											
Output	1000BTU/HR	41	101	235	359	585	717	938	1195	1406	1672	1876	2150	2344	2627	2866	3105	3344	3821	4300	4777	5254	5732	6210	6688		
	1000KCAL/HR	10	25	59	90	147	179	236	299	354	418	472	538	590	662	722	783	842	963	1084	1204	1324	1445	1565	1686		
Number of Elements		1	2	2	3	5	6	4	5	6	7	8	9	10	11	12	13	14	16	18	20	22	24	26	28		
Electrical Power Requirements (In Amps)**																											
208V, 50/60Hz, 3 phase		34	84	194	292	485	583	780	971	1166	1360	1555	1748	1944	2138	2333	2528	2722	3164	3500	3888	4278	4667	5056	5444		
240V, 50/60Hz, 3 phase		29	73	169	252	420	505	676	842	1012	1179	1349	1515	1686	1855	2024	2193	2361	2274	3036	3373	3711	4048	4386	4723		
380V, 50/60Hz, 3 phase		18	45	107	160	266	319	426	532	639	744	852	957	1065	1171	1278	1384	1491	1734	1917	2130	2343	2555	2738	2981		
Water Capacity	GALLONS	13	13	20	50	66	66	133	133	133	180	180	213	213	360	360	360	360	617	617	617	880	880	880	880		
	KG	49	49	75	189	249	249	503	503	503	681	681	806	806	1360	1360	1360	1360	2332	2332	2332	3330	3330	3330	3330		

Dimensions are approximate. We reserve the right to change specifications.
 Panel Box size may change depending on voltage.
 --Indicates not available.



FB-070-W-FB-1960-W
 Electrical Hot Water Boilers



FB-012-W-FB-030-W
 Electrical Hot Water Boilers