

4

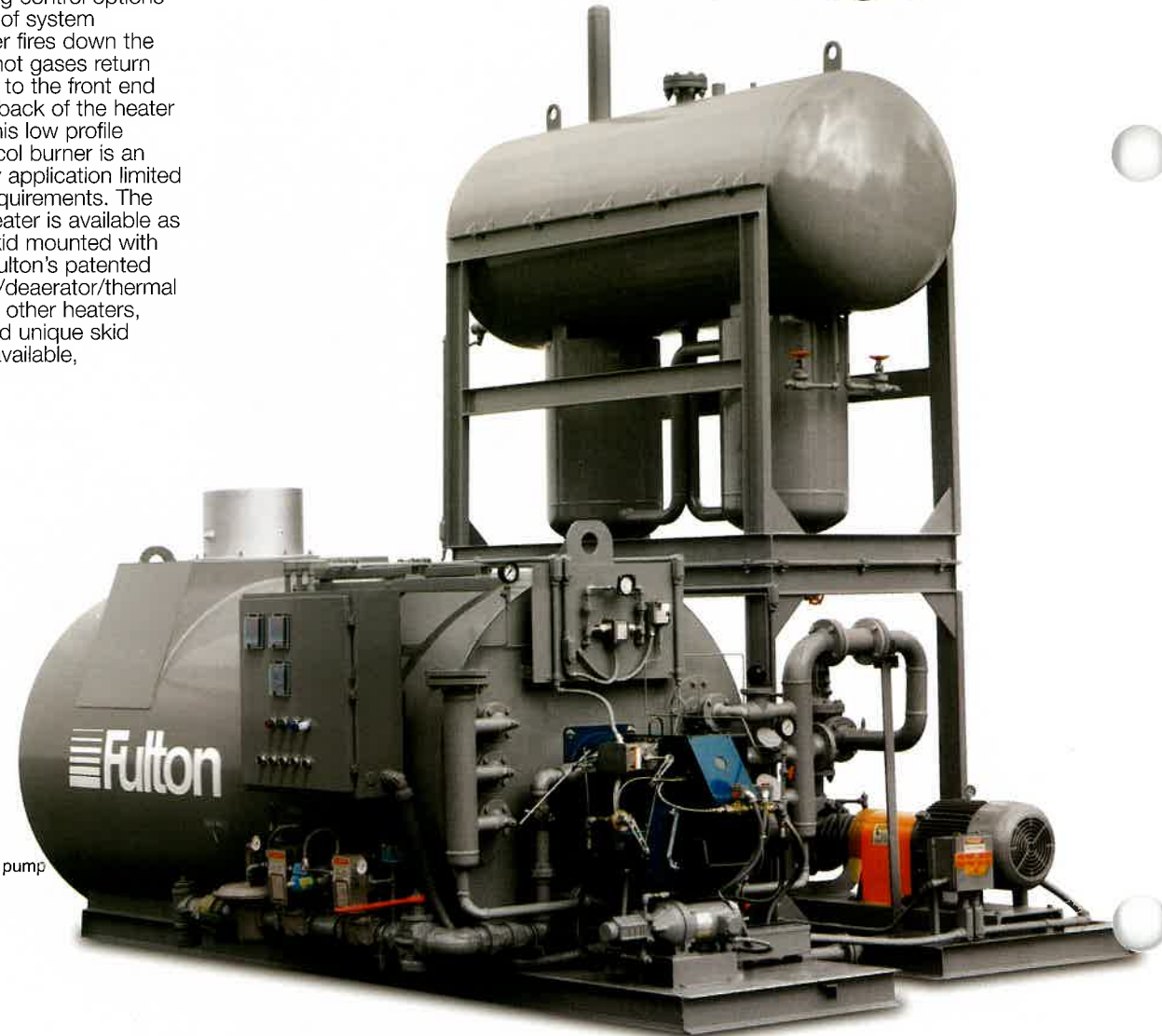
Horizontal Coil Design Thermal Fluid Heaters

Fulton's compact horizontal coil design heater features a 3-pass design with capacities from 2.4 million to 12 million BTU/Hr and maximum operating temperatures to 650°F.

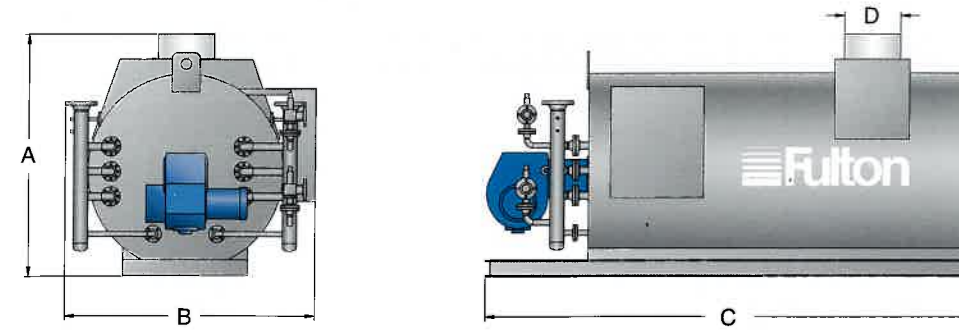
Choice of fuels includes #2, #4, and #6 oil, gas (propane, natural or custom) or a combination. Modulating control options provide precise control of system temperature. The burner fires down the center of the coil. The hot gases return back between the coils to the front end plate and return to the back of the heater and exit out the flue. This low profile heater with open protocol burner is an excellent choice for any application limited height or unique fuel requirements. The horizontal coil model heater is available as a stand alone unit or skid mounted with circulating pump and Fulton's patented combination expansion/deaerator/thermal buffer tank. As with our other heaters, customized controls and unique skid mounted systems are available.



FT-0600-HC Horizontal thermal fluid heater



FT-0600-HC heater skid mounted with circulation pump and combination expansion/deaerator/thermal buffer tank.



Specifications: Model FT-HC		0240	0400	0600	0800	1000	1200
Heat Output	1000 BTU/HR	2400	4000	6000	8000	10000	12000
	1000 KCAL/HR	600	1000	1500	2000	2500	3000
Thermal Fluid Content	GAL.	75	115	190	264	325	508
	LITERS	284	435	719	998	1230	1921
Recommended Flow Rate	GPM	150	300	400	600	850	1000
	M3/HR	35	69	91	137	193	227
Typical Circulating Pump Motor	HP	15	25	30	50	60	75
	KW	11.2		22.5	37.3	45	56.3
Typical Burner Motor	HP	2	5	7.5	10	15	15
	KW	1.5	3.7	5.6	7.5	11.2	11.2
Fuel Consumption @ Full Output #2 Oil	GPH	23	39	58	77	96	115
	LITER/HR	88	148	220	292	364	436
Fuel Consumption @ Full Output Natural Gas	FT3/HR	3200	5340	8000	10700	13340	16000
	M3/HR	91	152	227	304	378	454

Dimensions: Model FT-HC		0240	0400	0600	0800	1000	1200
Heater Inlet/Outlet Connections	IN	2.5	3	4	4	6	6
	MM	65	80	100	100	150	150
A: Overall Height	IN	64	68	78	98	107	125
	MM	1626	1727	1981	2489	2718	3175
B: Width	IN	62	62	80	92	107	124
	MM	1575	1575	2032	2337	2718	3150
C: Overall Depth	IN	134	136	157	157	153	170
	MM	3404	3455	3988	3988	3886	4318
D: Flue Diameter	IN	12	14	18	20	20	22
	MM	305	356	457	508	508	559
Approximate Dry Weight	LB	5000	7500	9500	12500	19250	21700
	KG	2272	3409	5455	5682	8750	9864

- 1 Thermal Fluid Inlet - The thermal fluid enters here and continues on to the coils.
- 2 Panel Box - All controls are located in one central control panel.
- 3 Flue (exhaust) Outlet
- 4 Burner & Air Inlet
- 5 Thermal Fluid Outlet - The thermal fluid is pumped through the coils to the fluid outlet, then continues on through the entire system to the users.
- 6 High Density, High Temperature Insulation
- 7 Thermal Coils

