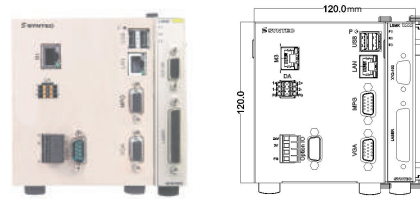


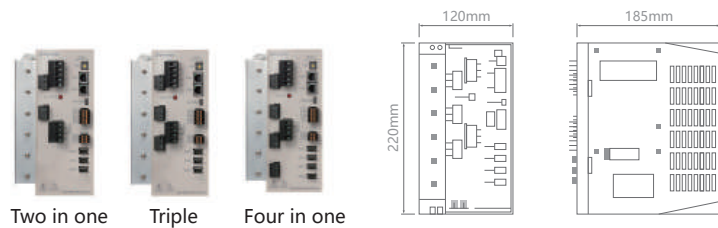
# Specification

## 710SA Controller



Specification	
Interface Signals	XY2-100
Laser source interface	25 pin DSUB
Axial Control (Std./Max)	2/5
Servo Interface	Mechatrolink-III/EtherCAT
IO Extension	Optional Add IO Module(up to 4096 I/O)
Input Voltage	24V 1A
USB	2
Data Sharing Interface	LAN USB RS485

## Series Servo Driver



Specification	SMD-22B	SMD-23B	SMD-24B
Axial Control	2	3	4
Support Encoder Model	Nikon-Tamagawa-Sankyo-Panasonic-Hiwin		
IO Extension	21 / 20		
Servo Communication	Mechatrolink-III		
Input Voltage	220V		

## TAIWAN

### Taiwan (Hsinchu)

SYNTEC Technology Co., Ltd  
ADD : No.25, Yanfa 2nd Rd., East Dist.,  
Hsinchu City 300, Taiwan (R.O.C.)  
TEL : +886-3-6663553  
FAX : +886-3-6663505  
EMAIL : sales@syntecclub.com.tw

### Taichung

SUN-CNC Co., Ltd  
ADD : No. 22, Lane 428, Section 1, Fengyuan  
Boulevard, Fengyuan District  
TEL : +886-4-25337731  
TAX : +886-4-25349224

TANLU-CNC Co., Ltd  
ADD : No. 42, Jingming Road, Xitun District,  
Taichung City, Taiwan (R.O.C.)  
TEL : +886-4-23102526  
TAX : +886-4-23102636

### Tainan

ADD : No. 218, Denan Road, Rende District,  
Tainan City, Taiwan (R.O.C.)  
TEL : +886-6-2795707  
TAX : +886-6-2795705

## AROUND THE WORLD

### Malaysia

ADD : No.2, Jalan Astana 1D,41050 Shah Alama,  
Selangor, Malaysia.  
TEL : +603-33115887/+617-674 3282  
EMAIL : otis.slah@syntecclub.com.tw;  
yenearn.teoh@syntecclub.com.tw

### Thailand

ADD : 78/38 Kheha Romkiao Rd., Khlong Song Ton Nun,  
Lat Krabang Bangkok, 10520  
TEL : +662-006-6738  
EMAIL : thanawal@syntecclub.com.tw

### Vietnam

ADD : 3F, No. 36, A4 Street, Ward 12, Tan Binh District,  
Ho Chi Minh City, VietNam  
TEL : +84939332829  
FAX : +842822535556  
EMAIL : andyngo@vnsyntec.com.vn

### Turkey

ADD : Kücükbakkalkoy Mah. Vedat Günyol Cd. Defne Sok.  
No:1 D:1502 Flora Residence,34750 Atasehir/Istanbul, Türkiye  
TEL : +90-216-2662475  
EMAIL : daisy.cheng@syntecclub.com.tw

### USA (South California)

ADD : 766 Pinefalls Ave.Walnut,CA 91789  
TEL : +1909-551-0187  
EMAIL : info@syntecamerica.com

### Indonesia

PT. OTOMASI BERSAMA INDONESIA  
ADD : Ruko Arcadia Mataram Blok B, No 15, Kelurahan  
Cibatu, Kecamatan Cikarang selatan, 17530, Indonesia  
TEL : +6221 2210 4832  
EMAIL : yulius@otomasi.co

### India (Distributor)

Luna Technologies Pvt. Ltd.  
ADD : W-200, TTC Industrial Estate , Khairne ,  
Thane Belapur Road , Navi Mumbai -400708  
TEL : +91-22- 61788110  
E-mail : sales@lunabearings.com

## CHINA

### Jiangsu

SYNTEC Equipment Co.,Ltd.  
ADD : Building B, Kejiyuan, Xindai, No. 9, Chunhui Road,  
Suzhou Industrial Park  
TEL : 0512-69008860  
FAX : 0512-65246029

Jiangsu-Suzhou  
Suzhou Huaxin Numerical Control Technology  
Development Co.,Ltd.  
ADD : Building A, Kejiyuan, Xindai, No. 9, Chunhui Road,  
Suzhou City Industrial Park  
TEL : 0512-69008860  
FAX : 0512-69560818

### Nantong

Suzhou New Generation CNC Equipment Co., Ltd.  
Nantong Branch (NTST)  
ADD : Building A, Kejiyuan, Xindai, No. 9, Chunhui Road,  
Suzhou City Industrial Park  
TEL : 0513-89077025

### Jiangsu-Nanjing

The Suzhou new generation of CNC Equipment  
Co., Ltd. Chongqing Branch  
ADD : Room 104, Unit 2, Building 6, Jiulonghu Villa, No. 188,  
Qingshuting West Road, Jiangning District, Nanjing City  
TEL : 025-52717710  
FAX : 025-52717702

### Anhui Hefei

Suzhou new generation numerical control  
equipment Co., Ltd. Hefei branch  
ADD : Hefei Binhu Baoshe District Century City  
Fu Hui Yuan T4-2202map  
TEL : 0551-63814183

### Shaanxi

Shaanxi Xi'an  
The Suzhou new generation of CNC Equipment  
Co., Ltd. Xi'an Branch  
ADD : Room 11328, Unit 1, Building 4, Duhui, I, Yicuiyuan,  
No. 10, Tangyan South Road, Gaoxin District, Xian City  
TEL : 029-88287423  
FAX : 029-88287423

### Wuxi

Suzhou Huaxin CNC Technology Development  
Co., Ltd. Wuxi Office  
ADD : B906, Yiyue Network Building, No. 68, Tansuo Road,  
Huishan District, Wuxi  
TEL : 15295664580

### Guangdong

Suzhou SYNTEC Equipment Co.,Ltd. Guangdong  
Branch  
ADD : 2F, Building 6, Dongguan-Taiwan Biotechnology  
Incubation Center, No. 1, Taiwan High-Tech Park, Songshan  
Lake  
TEL : 0769-22249073  
FAX : 0769-22210012

### Guangdong Dongguan

Suzhou SYNTEC Equipment Co.,Ltd. Dongguan  
Branch Co., Ltd. Chongqing Branch  
ADD : Zone B, 3F, Building 1, No.522,  
Chain-An East Rd., Changan Townmap  
TEL : 0769-81660318  
FAX : 0769-81660328

### Guangdong Guangzhou

Suzhou SYNTEC Equipment Co.,Ltd. Guangzhou  
Branch  
ADD : 2T1404, Zhiqi, No. 8, Luolia Village Section, Fuyi Road,  
Dalong Street, Panyu District, Guangzhou City  
TEL : 020-34583040  
FAX : 020-34583220

### Changping

The Suzhou new generation of CNC Equipment  
Co., Ltd. Chongqing Branch  
ADD : Floor 5, Huilong Building, No. 8, Qianyi Road, Banshi  
Village, Changping Town, Dongwan City  
TEL : 0769-82826802  
FAX : 0769-82826820

### Shenzhen

Shenzhen branch  
ADD : 5F, Building C, Sunshine Technology Park, Gin-Long  
2nd Rd., BaoLong Industrial Zone, Shenzhen Longgang District  
TEL : 0755-84320380  
FAX : 0755-84559490

### Jiangmen

Suzhou New Generation CNC Equipment Co., Ltd.  
Jiangmen Branch (JMST)  
ADD : Room 02, Floor 7, Huoju Building, Gaoxin District, No. 288,  
Jinou Road, Jianghai District, Jiangmen City,Guangdong  
Province  
FAX : 0750-3771824

### Changzhou

Syntec Technology (Suzhou) Co., Ltd. Nanjing  
Branch Changzhou Office  
ADD : Room 2217, Yatai Fortune Center, No. 1, Huayuan  
Street, Hutang Town, Wujin District, Changzhou City  
TEL : 18168828572

### Xiamen

Suzhou SYNTEC Equipment Co.,Ltd. Xiamen  
Branch  
ADD : No. 100,B Chuang Chang Fang 3F East,Jin-Fu Road,  
Tong An District,Xiamen City, Fujian Province, China  
TEL : +86-592-7191901  
FAX : +86-592-7220536

### Zhejiang

Zhejiang Hangzhou  
Suzhou SYNTEC Equipment Co.,Ltd. Hangzhou  
Branch  
ADD : Room1202 Unit2 Building1, Edifice DiKai , Jincheng  
Road, Beigan Street,Xiaoshan District , HangzhouCity,Zhejiang  
Province, China  
TEL : 0571-82751187  
FAX : 0571-82751186

### Zhejiang Ningbo

Suzhou SYNTEC Equipment Co.,Ltd. Ningbo  
Branch  
ADD : Room 12-07, No.262,416 Alley, Zhaohui Road,  
Jiangdong District, Ningbo City.  
TEL : 0574-87750305  
FAX : 0574-87750306

### Zhejiang Wenling

The Suzhou new generation of CNC Equipment  
Co., Ltd. Wenling Branch  
ADD : Room 1206, Department A, Zhenxing Plaza,Taijing  
Subdistrict, Wenling Citymap  
TEL : 0576-86138372  
FAX : 0576-86119106

### Luoyang

Henan Luoyang  
The Suzhou new generation of CNC Equipment  
Co., Ltd. Luoyang Company  
ADD : 1-1-704, Runsheng Building, Cross of Sanshan Road  
and-Heluo Road, Hi-and-New Tech Park of Luoyang  
TEL : 0379-65110352  
FAX : 0379-65110352

### Xuzhou

Syntec Technology (Suzhou) Co., Ltd. Xuzhou  
Branch  
ADD : Room -1503, Linghaibangonglounan, No. 66, Kunpeng  
Road, Jingji Development Area, Xuzhou City, Jiangsu Province  
TEL : 13656201020

### Chongqing

Suzhou New Generation CNC Equipment Co., Ltd.  
Chongqing Branch (CQST)  
ADD : Block B, Dongli International, 11-6, Building 2, No. 62,  
Taishan Boulevard East Section, Bu New District, Chongqing City  
TEL : 023-67913296  
FAX : 023-67634382

### Tianjin

The Suzhou new generation of CNC Equipment  
Co., Ltd. Tianjin Branch  
ADD : No. 37, A District, Huayuan, Qiaorufeng, No. 7,  
Waihuan West Road, Xiqing District, Tianjin City  
TEL : 022-23739192-801  
FAX : 022-23739192

### Shandong

Shandong Jinan  
Suzhou SYNTEC Equipment Co.,Ltd. Jinan  
Branch  
ADD : Flyover District of Ji nan Three Bridge Street No. 28  
Luneng Cambridge 9 Building 3 unit 101 room  
TEL : 0531-85907208  
FAX : 0531-85905708

### Hubei

Hubei Wuhan  
Suzhou new generation of CNC Equipment Co.,  
Ltd. Wuhan Branch  
ADD : Room 2003-2006, A Guanggogooji, No.456,  
Luoyu East Road, Hongshan District , Wuhan, China  
TEL : 027-87638876  
FAX : 027-87204137

### Liaoning

Shenyang  
Suzhou new generation of CNC Equipment Co.,  
Ltd. Wuhan Branch  
ADD : 22-1, C61-, Diycheng, No. 1, 1Jia1, Qigong Street, Xiexi  
District, Shenyang City, Liaoning Province  
TEL : 18698806526

### Jinan

Syntec Technology (Suzhou) Co., Ltd. Jinan  
Branch  
ADD : 502, Unit 3, Building 11, Kangqiao, Luneng, No. 28,  
Sankongqiao Street, Tianqiao District, Jinan  
TEL : 0531-85907208  
FAX : 0531-85905708

**SYNTEC**  
新代科技股份有限公司

SYNTEC Technology Co., Ltd.  
No.25, Yanfa 2nd Rd., East Dist., Hsinchu City  
300, Taiwan (R.O.C.)

☎ 886-3-6663553  
☎ 886-3-6663505

✉ sales@syntecclub.com.tw

Suzhou SYNTEC Equipment Co.,Ltd.  
No. 9th, Chun Hui Road, Suzhou Industrial Park,  
Jiangsu Province

☎ 86-512-69008860  
☎ 86-512-65246029

✉ service@syntecclub.com.cn



http://www.syntecclub.com.tw  
Catalog NO. 202208rev.3



 **SYNTEC**

**SYNTEC LASER  
MARKING  
CONTROLLER**

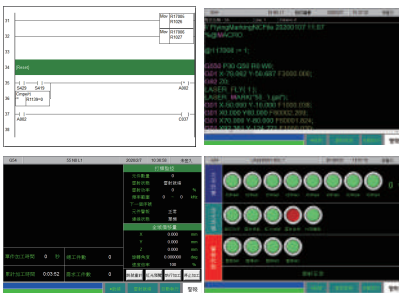
# Laser Marking System



## Software Feature

### 01 Automation Application

- Offer secondary development tool. Create brand features.
- Built-in PLC, suitable for automation applications.



### 02 Marking without PC

- Suitable for production line.



### 03 Motion Control Expert

- Easily integrates axial control base on CNC motion.



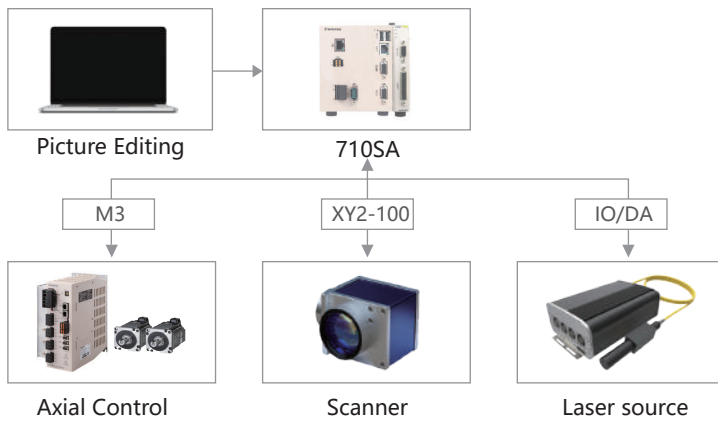
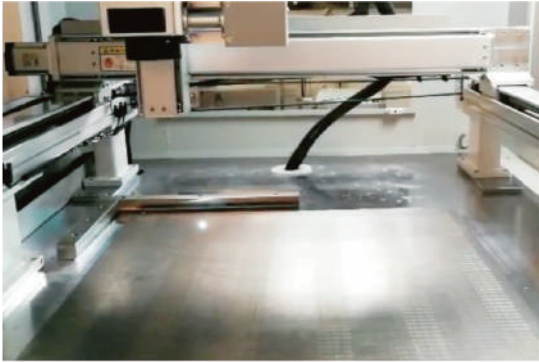
### 04 Easy Connect

- Connect with other device, such as robot and vision.
- Offer cloud service.



# Large Area Synchronous Laser Marking

Laser marking system could expand working area through synchronously controlling scanner and mechanical axes when workpiece is larger than scan area.

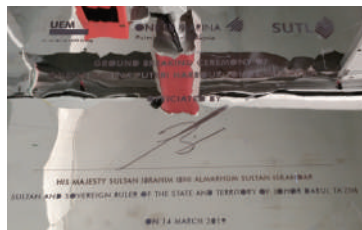


- Marking region is unlimited because of synchronous control axes and galvo scanner. Solve large area marking problem.
- Provide laser energy control function. Solve large laser energy at corner, start point and end point.
- Offer connection blur function, lower difficulties to adjust stitching errors.
- Offer total solution by combining motion, galvo scanner and laser control.

## Garnish Trim



## Metal Nameplate



## Metal Firm Cutting



## Glass Film Remover



## Fabric Cutting



## Ruler





# Automatic Applications

- Customization- Offer specialized layout and process.
- Vision- Positioning and scanning code.
- Expandable- Support axial controlling, IO module.
- Built-in PLC- Reduce cost.
- Communication- Connect with other device and upload information to cloud.

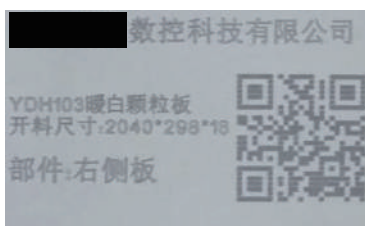


## Motor rotor auto serial number

- Stable and make information steam!
- Total solution: mark+barcode read and check+report
- Specialized interface, fool-proof design



## Board Laser Marking



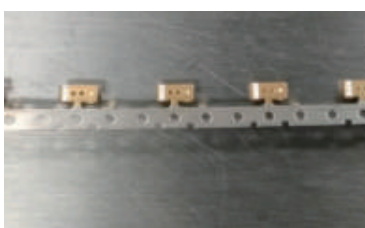
## Wire Marking



## Flying Marking



## Metal Removal



## Rotation marking



## Glass Drilling

