



SYNTEC
TECHNOLOGY CO.,LTD.

SyntecFS Server Manual.

匯出日期：2022-08-05
修改日期：2022-04-13


 中文版 Mandarin Version : SyntecFS Server 操作手册

Table of Contents

- Introduction
- Operating Environment
- Precautions
- Operation Procedure
 - Step 1. Download Software
 - Step 2. Create Shared Directory
 - Step 3. Run SyntecFS Server
 - Step 4. Set Shared Directory on Controller
 - Step 5. Reboot Controller to Establish Connection
- Auto-Run at PC Startup
- Shared Folder Advanced Setting
- Troubleshooting

SYNTEC

1 Introduction

SyntecFS Server is a **File Server Service** developed by Syntec, which performs similar to the Microsoft Network Neighborhood.

But unlike Microsoft Network Neighborhood's complicated setup procedure, users only need to run SyntecFS Server to enable File Server Service, and controllers under same domain that want to connect to this server, can establish connection and conduct file transfer application.



SYNTEC

2 Operating Environment

- Software Version (include and above) :
 - 10.118.28H, 10.118.33



SYNTEC

3 Precautions

- For Single-core controllers, the connection will first try to establish through "SyntecFS Server", if the server doesn't exist, then will it try out "Microsoft Network Neighborhood".
For Dual-core controllers, the connection will only be establish through "SyntecFS Server".
- "SyntecFS Server" only supports the connection with WinCE controller.
- "SyntecFS Server" currently does not support WinCE installation.
- Version Regulation
 - 1.0.2 version of **SyntecFS Server** has to be used with 10.118.28H/10.118.33 version of software.
 - 1.0.3 and above version of **SyntecFS Server** has to be used with 10.118.28I/10.118.34 and above version of software.
- For versions below 10.118.44D, 10.118.46D, 10.118.48O, 10.118.52I, 10.118.56C, 10.118.58: please start SyntecFS Server on PC before power-on the controller to establish the connection.



SYNTEC

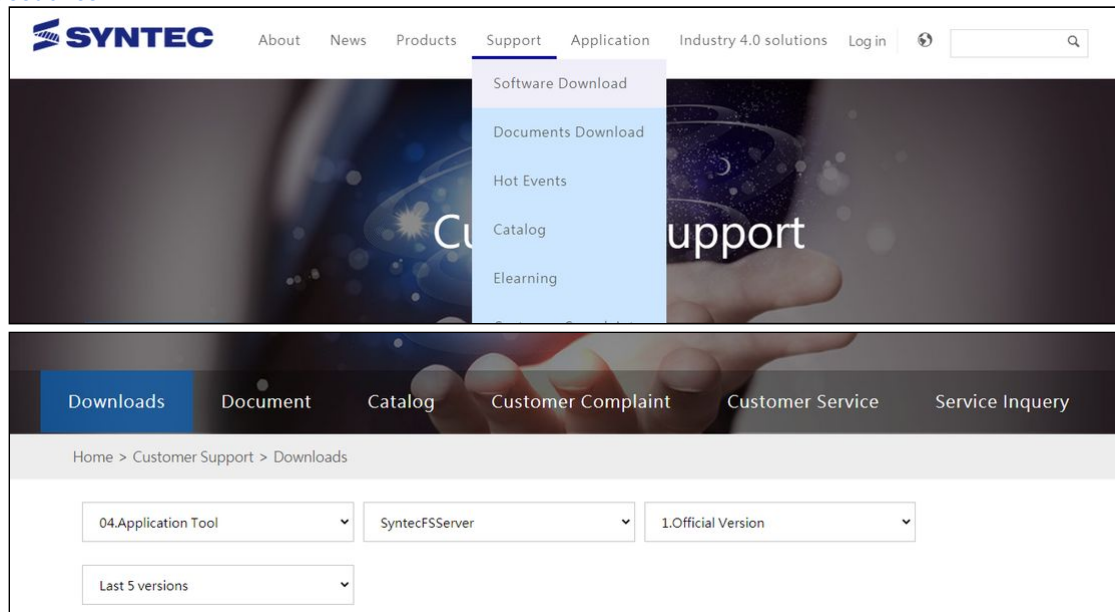
4 Operation Procedure

4.1 Step 1. Download Software

✓ Please download the software from Syntec official site :

- link : <http://www.syntecclub.com/Download.aspx>
- location : Support → Software Download → 04. Application Tool → SyntecFS Server

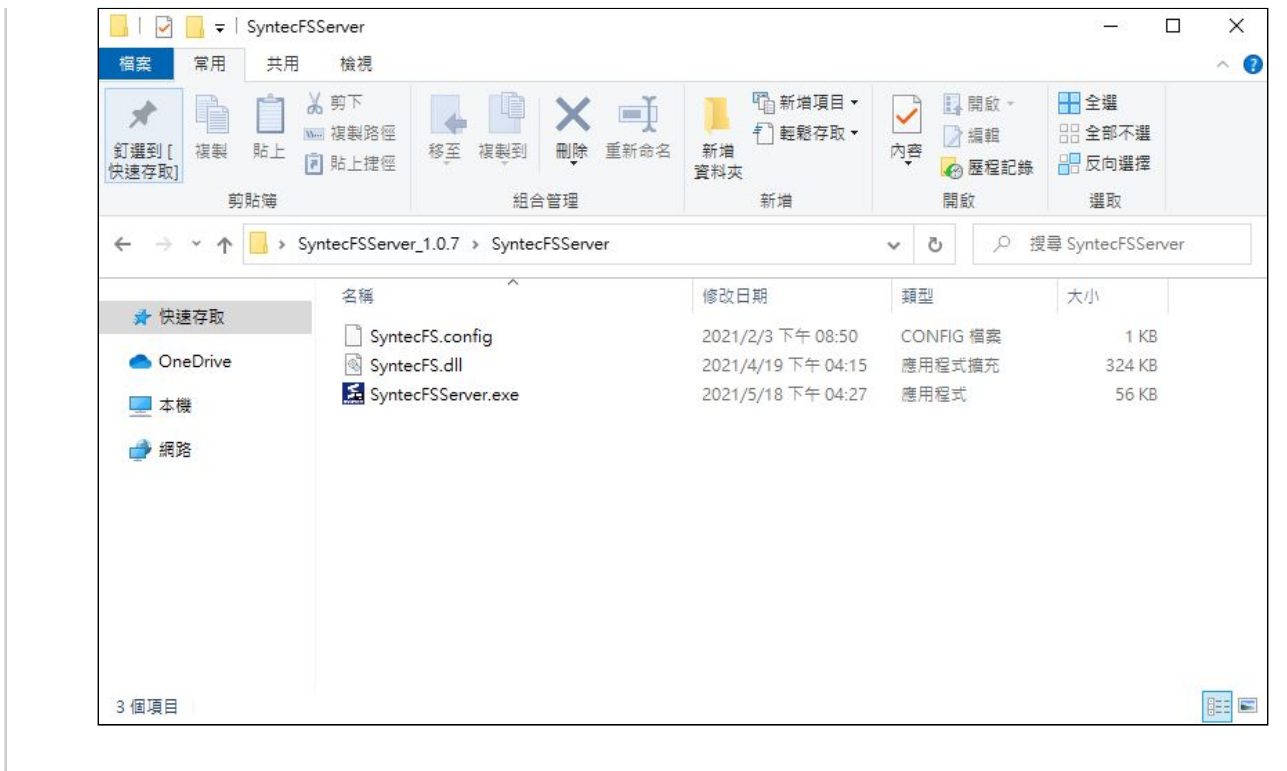
Procedures



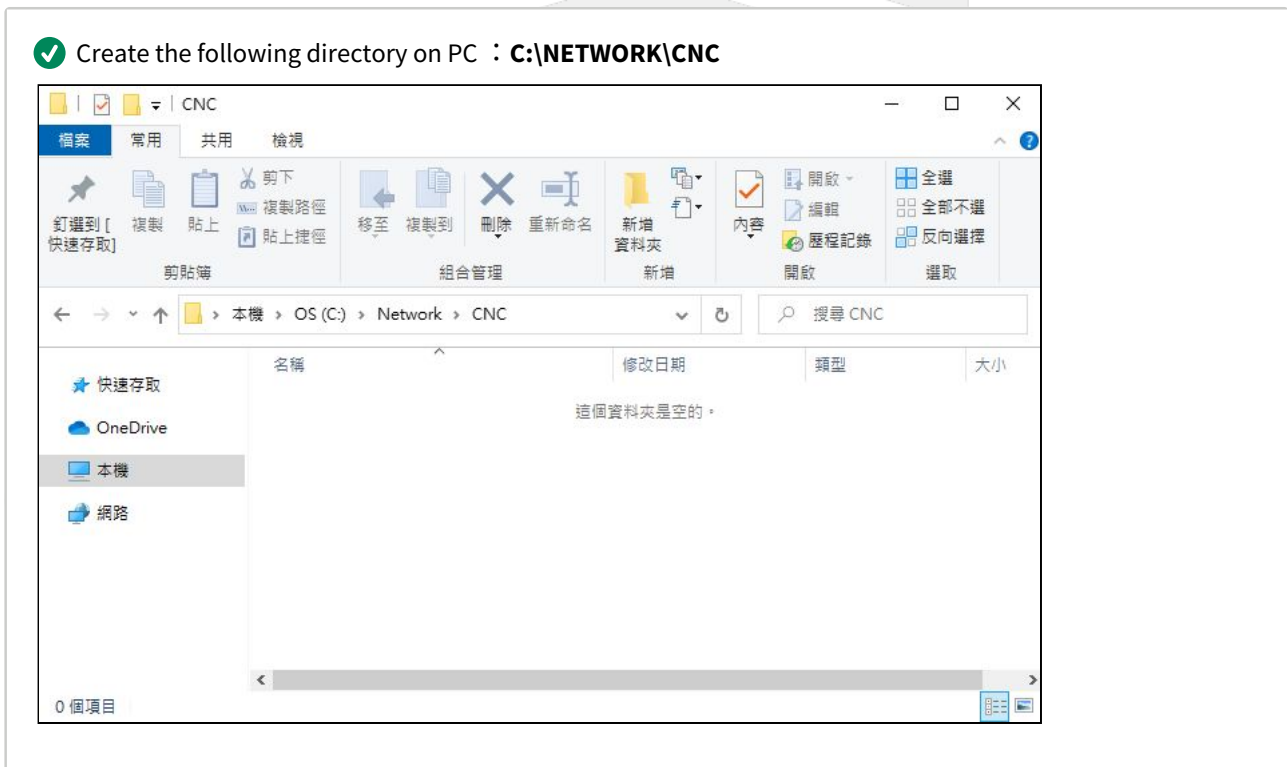
✓ Unzip the downloaded folder. The folder will contain following files :

- Configuration file : SyntecFS.config
- Dynamic link library : SyntecFS.dll
- Execution file : SyntecFS Server.exe

SYNTEC



4.2 Step 2. Create Shared Directory

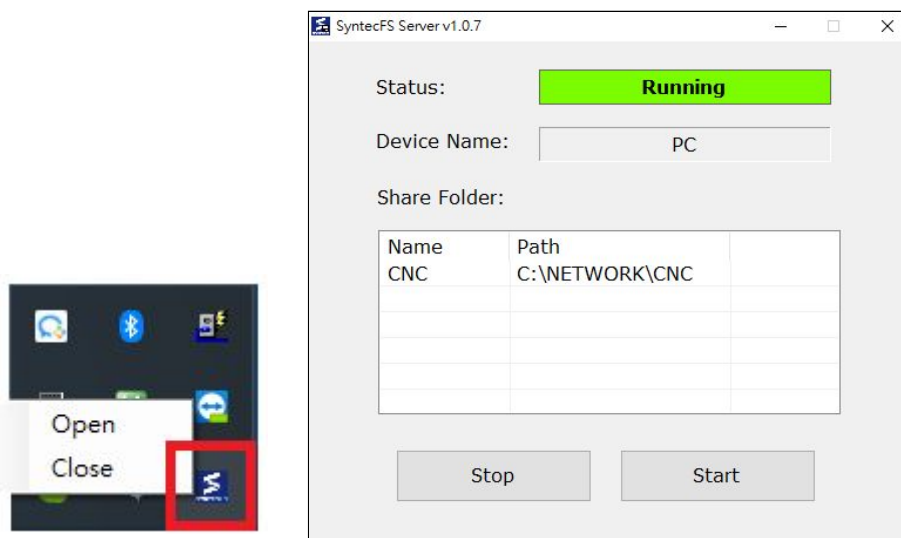


4.3 Step 3. Run SyntecFS Server

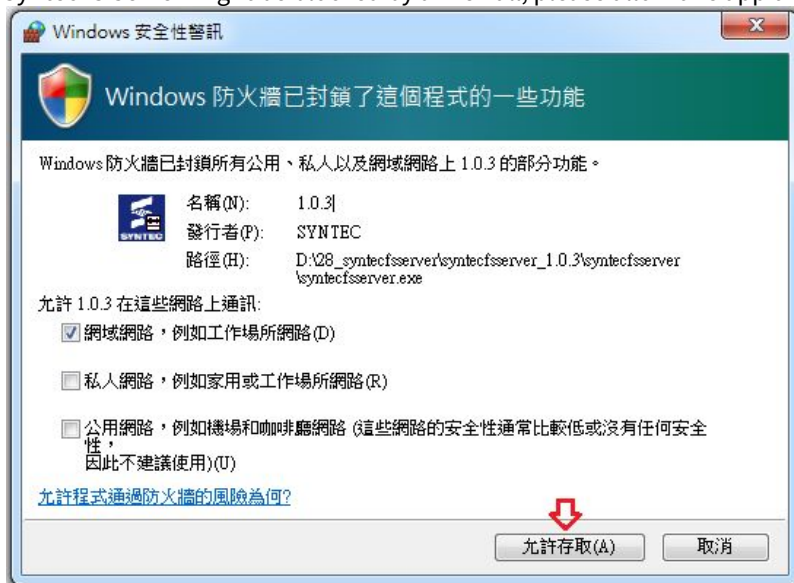
Version 1.0.7 Version after 1.1.0

✔ Start SyntecFS Server.

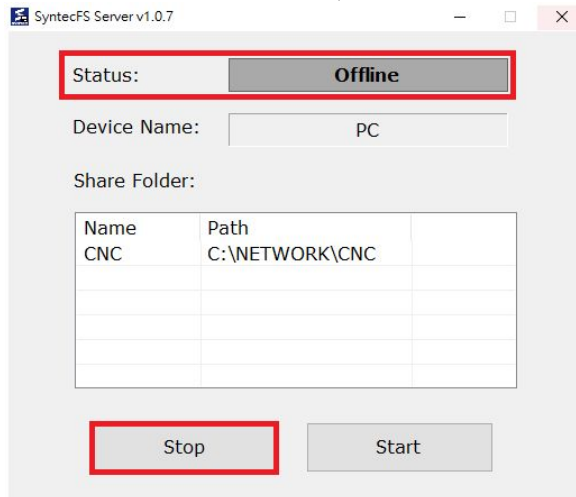
- Execute SyntecFSServer.exe to start a file server service.
Please note that after being executed, this program will be hidden inside the tool bar located at down-right corner by default.
User can double click the SyntecFS Server icon, or right-click icon and choose "Open" to show application.



- SyntecFS Server might be blocked by a firewall, please allow this app through firewall.



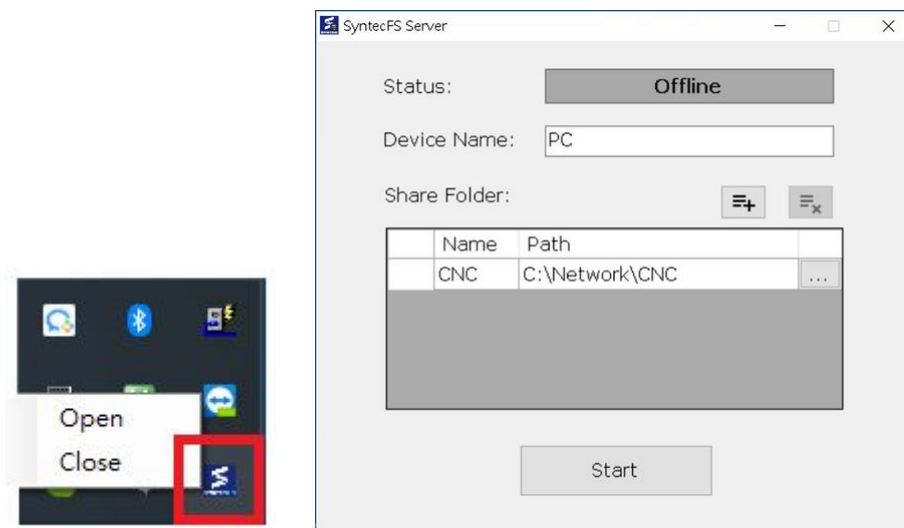
- Stop server :
 - If user wants to stop a file server service, please click on "Stop" button, the service will be turned off within a few second, and the status will be switch to offline.



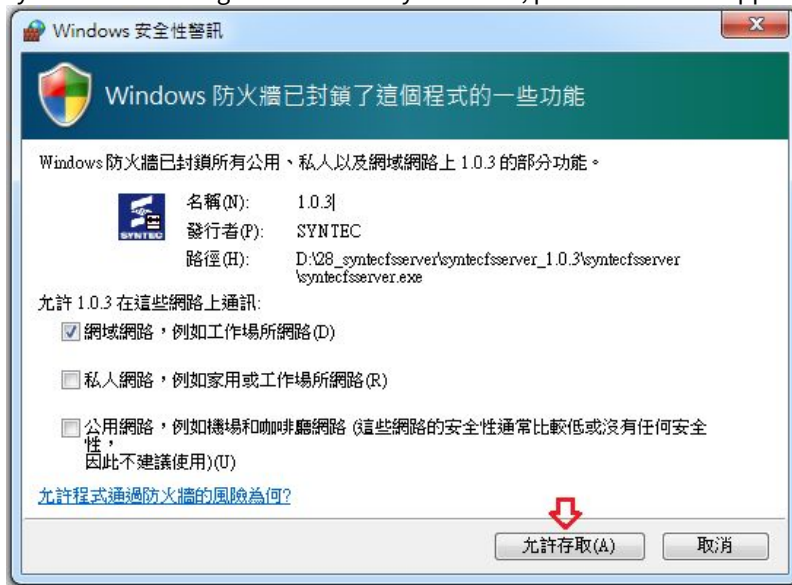
Version 1.0.7 [Version after 1.1.0](#)

✓ Start SyntecFS Server.

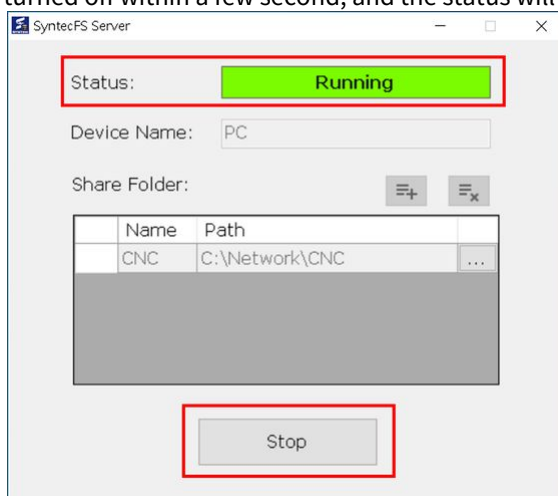
- Execute SyntecFSServer.exe to start a file server service.
Please note that after being executed, this program will be hidden inside the tool bar located at down-right corner by default.
User can double click the SyntecFS Server icon, or right-click icon and choose "Open" to show application.



- SyntecFS Server might be blocked by a firewall, please allow this app through firewall.



- Stop server :
 - If user wants to stop a file server service, please click on "Stop" button, the service will be turned off within a few second, and the status will be switch to offline.



4.4 Step 4. Set Shared Directory on Controller

✔ Setup on Controller

- Enter "Network Setting" page.
 - Assign "PC Name" as **PC**.
 - Assign "Dir Name" as **CNC**.

G54	0000 N0 L1	et Kernel Serve	2021/5/21	09:43:26	Admin
IP Address Parameter 1 / 2					
IP Address Setting	Obtain an IP Address via DHCP ▼				
IP Address	10.10.40.78	Name Server Parameter			
Subnet Mask	255.255.255.0	Primary DNS	10.10.1.231		
Default Gateway	10.10.40.254	Primary WINS	10.10.1.10		
Network DiskRemote Host Path					
PC Name	PC	Dir Name	CNC		
User Name		Password			
Net Status	SyntecFS Connected.				
Resource Shared					
Shared Folder Path					
		Not Rdy	Auto	Alarm	
Save Setting	Cancel			Set Kernel Server	Wifi Module Setting
				Syntec EagleEye	

- ✓ Click on "Save Setting".

4.5 Step 5. Reboot Controller to Establish Connection

- ✓ Reboot the Controller.
- ✓ Enter "Network Setting" page to check connection status.

SYNTEC

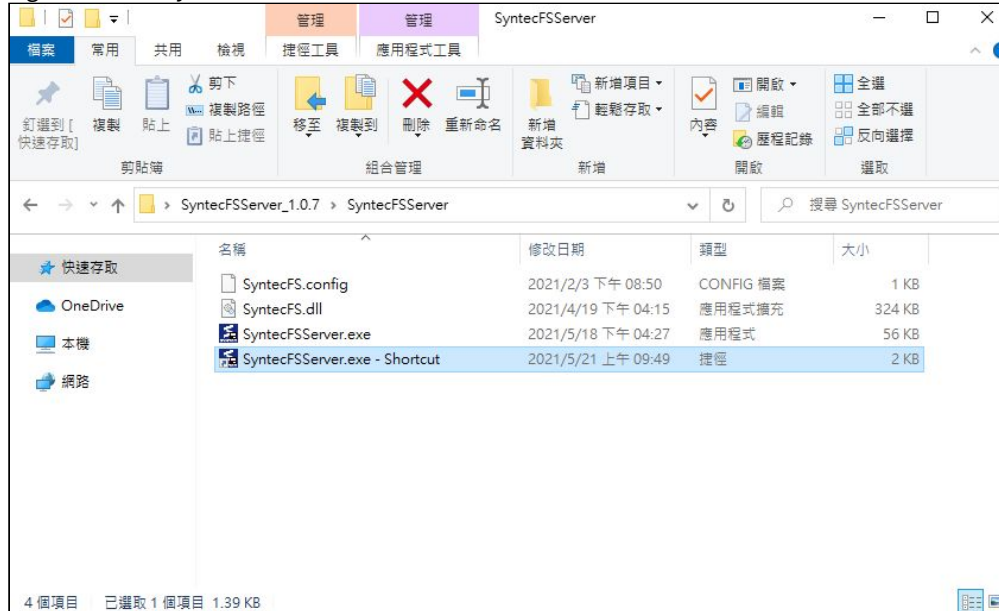
- If success, the "Net Status" will display SyntecFS Connected.

G54	0000 N0 L1	let Kernel Serve	2021/5/21	09:43:26	Admin
IP Address Parameter 1 / 2					
IP Address Setting	Obtain an IP Address via DHCP ▼				
IP Address	10.10.40.78	Name Server Parameter			
Subnet Mask	255.255.255.0	Primary DNS	10.10.1.231		
Default Gateway	10.10.40.254	Primary WINS	10.10.1.10		
Network DiskRemote Host Path					
PC Name	PC	Dir Name	CNC		
User Name		Password			
Net Status	SyntecFS Connected.				
Resource Shared					
Shared Folder Path					
		Not Rdy	Auto	Alarm	
Save Setting	Cancel		Set Kernel Server	Wifi Module Setting	Syntec EagleEye

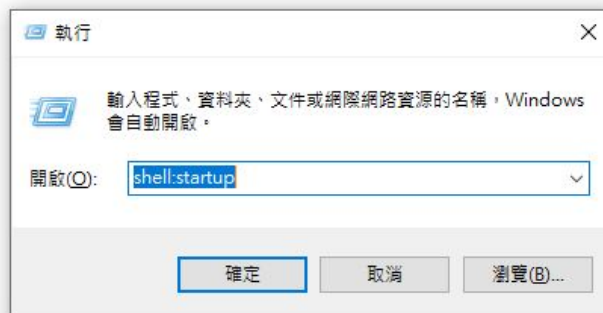


5 Auto-Run at PC Startup

1. Open the folder which contains SyntecFSServer.exe
Right-click on SyntecFSServer.exe to create a shortcut.

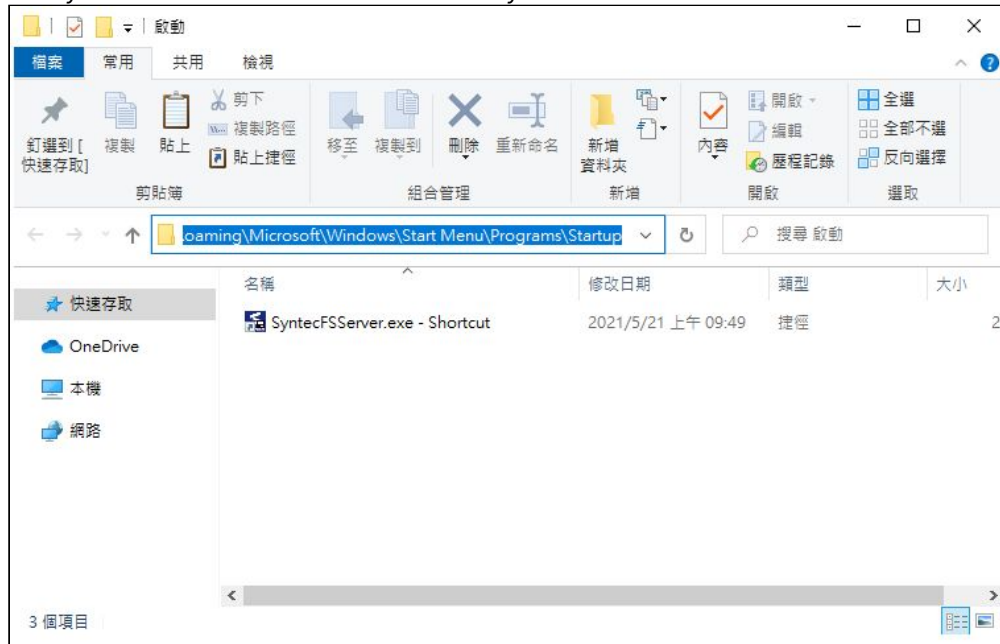


2. Open "Run" window (Window key+R)
Enter **shell:startup** command to open a Startup folder.



SYNTEC

- Cut the SyntecFSServer.exe - shortcut created from step 1 and paste it to the Startup folder. The SyntecFSServer.exe will run automatically after each reboot.



SYNTEC

6 Shared Folder Advanced Setting

Version 1.0.7 Version after 1.1.0

- Use any text editor to open the "SyntecFS.config".
"DeviceName", "Name", "Path" can be adjust according to user's requirement.
For example :

i Requirement :

- Establish a service with DeviceName called **LENOVO-PC**.
- Share a directory **D:\NETWORK\CNC** with a codename called **SHARE**.
(that is, for connection, the codename **SHARE** stands for **D:\NETWORK\CNC**)

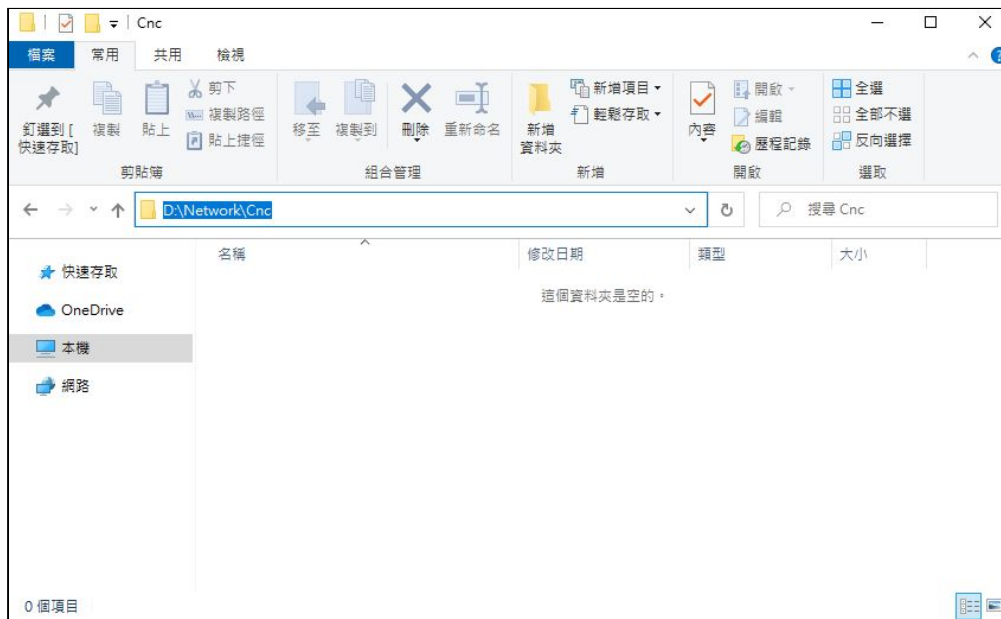
i Result :

```
<Setting>
<DeviceName>LENOVO-PC</DeviceName>
<Folder>
<Name>SHARE</Name>
<Path>D:\NETWORK\CNC</Path>
</Folder>
</Setting>
```

i Details :

- Device Name
 - Node : **<Device Name>**
 - Usage : File Server Service's device name. A Controller will connect to a specific service using this name.
 - Suggestion :
 - Only support English.
 - Use a unique **Device Name** under same domain to avoid connection conflict.
- Shared Directory
 - Node : **<Folder>**
 - Usage : A directory that the File Server Service can share.
 - Content :
 - Shared Directory Codename **<Name>** : While trying to connect to a shared directory, a controller will use this codename to obtain the actual shared directory from "SyntecFS.config".
 - Actual Shared Directory **<Path>** : An actual shared directory.

i PC Environment :



i Controller's Setting :

G54	0000 N0 L1et Kernel Serve	2021/5/21	10:42:39	DEFAULT
IP Address Parameter 1 / 2				
IP Address Setting	Obtain an IP Address via DHCP			
IP Address	10.10.40.78	Name Server Parameter		
Subnet Mask	255.255.255.0	Primary DNS	10.10.1.231	
Default Gateway	10.10.40.254	Primary WINS	10.10.1.10	
Network DiskRemote Host Path				
PC Name	LENOVO-PC	Dir Name	SHARE	
User Name		Password		
Net Status	SyntecFS Connected.			
Resource Shared				
Shared Folder Path				
		Not Rdy	Auto	Alarm
Save Setting	Cancel	Set Kernel Server	Wifi Module Setting	Syntec EagleEye

- Additional Information : User can set multiple shared directory by repeating entire <Folder> node and assigning respective value.

```
<Setting>
<DeviceName>LENOVO-PC</DeviceName>
```



```

<Folder>
<Name>SHARE</Name>
<Path>D:\NETWORK\CNC</Path>
</Folder>
<Folder>
<Name>MYNcFiLes</Name>
<Path>D:\NETWORK\MYNcFiLes</Path>
</Folder>
</Setting>

```

Version 1.0.7 [Version after 1.1.0](#)

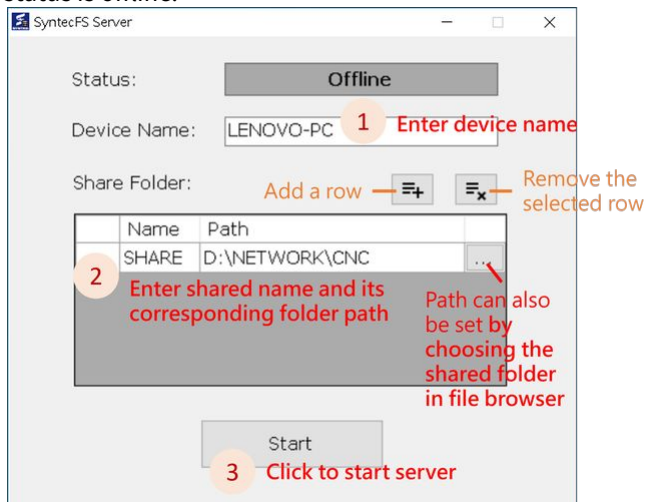
- Edit device name and shared folder list in "SyntecFS Server" program, as the example below.

i Requirement :

- Establish a service with DeviceName called **LENOVO-PC**.
- Share a directory **D:\NETWORK\CNC** with a codename called **SHARE**.
(that is, for connection, the codename **SHARE** stands for **D:\NETWORK\CNC**)

i Steps :

! **Shared settings can not be edited when server is running!** Please make sure server status is offline.



i Details :

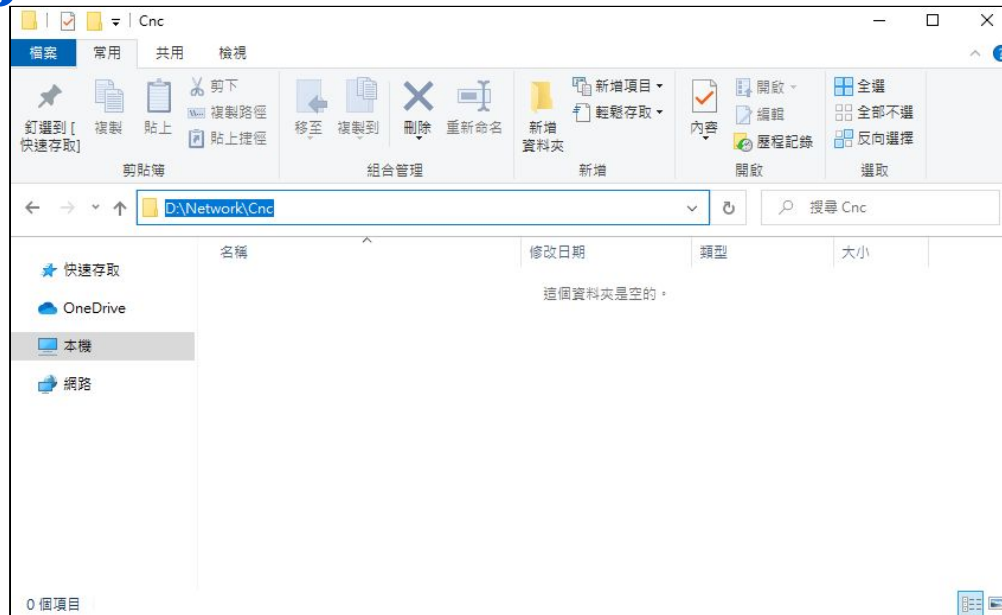
- Device Name
 - Usage : File Server Service's device name. A Controller will connect to a specific service using this name.
 - Suggestion :
 - Only support English.
 - Use a unique **Device Name** under same domain to avoid connection conflict.
- Shared Directory
 - Usage : A directory that the File Server Service can share.
 - Content :

- **Name** - Shared Directory Codename : While trying to connect to a shared directory, a controller will use this codename to obtain the actual shared directory.
- **Path** - Actual Shared Directory : An actual shared directory.
- **Additional Information** : User can set multiple shared directory, each row in list represent a shared position.

Click the buttons in the upper right corner to add a row or remove

selected row.

PC Environment :



Controller's Setting :

SYNTEC

G54	0000 N0 L1	et Kernel Serve	2021/5/21	10:42:39	DEFAULT
IP Address Parameter 1 / 2					
IP Address Setting	Obtain an IP Address via DHCP ▼				
IP Address	10.10.40.78	Name Server Parameter			
Subnet Mask	255.255.255.0	Primary DNS	10.10.1.231		
Default Gateway	10.10.40.254	Primary WINS	10.10.1.10		
Network DiskRemote Host Path					
PC Name	LENOVO-PC	Dir Name	SHARE		
User Name		Password			
Net Status	SyntecFS Connected.				
Resource Shared					
Shared Folder Path					
		Not Rdy	Auto	Alarm	
Save Setting	Cancel			Set Kernel Server	Wifi Module Setting
				Syntec EagleEye	

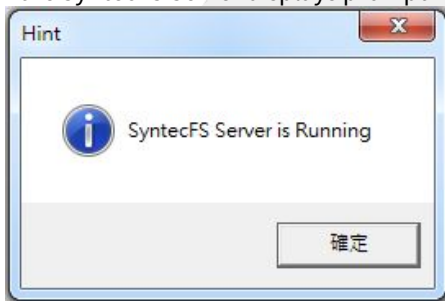


7 Troubleshooting

Version 1.0.7 Version after 1.1.0

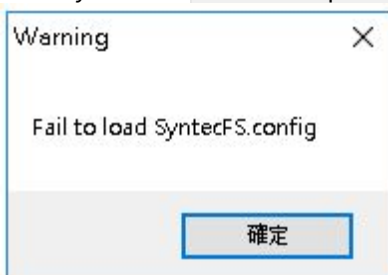
1. Cannot connect to the SyntecFS Server
 - a. Troubleshooting
 - i. Check whether the controller's version is under support.
 - ii. Check whether the IP of both controller and PC are under same domain, and can Ping each other.
 - iii. Check whether the SyntecFS Server is outdated.
 - iv. Restart the SyntecFS Server; Restart the controller and check whether the connection is success.

2. Run the SyntecFS Server displays prompt message 「SyntecFS Server is Running」

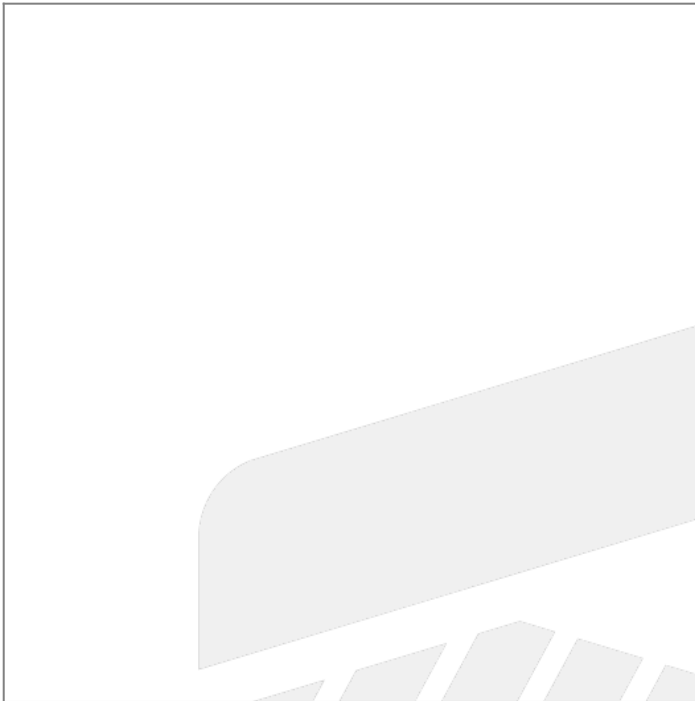


- a. If there already has a service running, execute the SyntecFS Server repeatedly will prompt this message.
(Please check the tool bar located at down-right corner, if there is an existing service still running)
- b. If there is no service running, open task manager, search for SyntecFSServer.exe and terminate the application.

3. Run the SyntecFS Server causes prompt message 「Fail to load SyntecFS.config」



- a. Check whether SyntecFS.config exists or not.
 - b. Check whether SyntecFS.config has any unsupported format.
4. Run the SyntecFS Server causes prompt message 「Following folder(s) do not exist. Please check SyntecFS.config.」



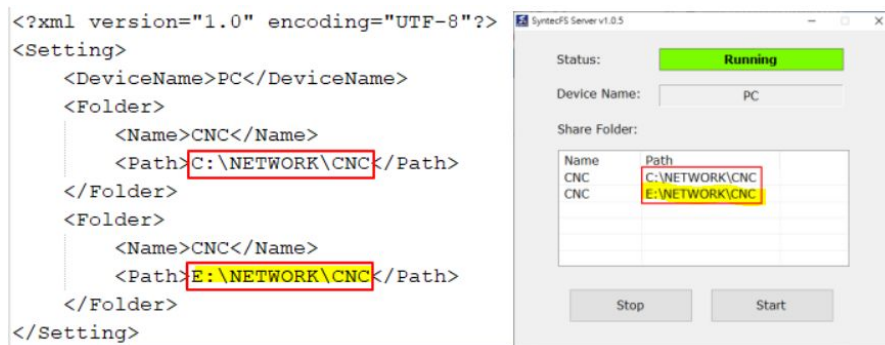
- a. Check whether directories declared inside the SyntecFS.config exist or not.

5. Run the SyntecFS Server causes prompt message 「Folder name conflict! Please check SyntecFS.config.」



- a. Check whether codenames in the SyntecFS.config are repeated.
If codenames are repeated, connection will use the last one

SYNTEC



6. If there has multiple PC running SyntecFS Server, it is possible that a controller will fail to connect to the designated PC, or miss-connect to another PC.

Troubleshooting :

- a. Modify SyntecFS Server on PC

Use any text editor to open "SyntecFS.config", and assign <DeviceName> with a unique name which is not being used.

The following example shows the result of changing the <DeviceName> value to **LENOVO-PC** :

```
<Setting>
<DeviceName>LENOVO-PC</DeviceName>
<Folder>
<Name>CNC</Name>
<Path>C:\NETWORK\CNC</Path>
</Folder>
</Setting>
```

SYNTEC

b. Modify "PC Name" on a controller

G54	0000 N0 L1	et Kernel Serve	2021/5/21	10:42:39	DEFAULT
IP Address Parameter 1 / 2					
IP Address Setting	Obtain an IP Address via DHCP ▼				
IP Address	10.10.40.78	Name Server Parameter			
Subnet Mask	255.255.255.0	Primary DNS	10.10.1.231		
Default Gateway	10.10.40.254	Primary WINS	10.10.1.10		
Network DiskRemote Host Path					
PC Name	LENOVO-PC	Dir Name	SHARE		
User Name		Password			
Net Status	SyntecFS Connected.				
Resource Shared					
Shared Folder Path					
		Not Rdy	Auto	Alarm	
Save Setting	Cancel		Set Kernel Server	Wifi Module Setting	Syntec EagleEye

7. Changing the "PC Name" or "Dir Name" on controller, the screen still display previous setting after pressing "Save Setting",

a. Troubleshooting:

- i. Reboot the controller and the setting will be updated.

SYNTEC

8. Net Status shows "SyntecFS shared folder doesn't exist."

G54	0000 N0 L1	et Kernel Serve	2022/2/17	16:27:54	DEFAULT	
IP Address Parameter 1 / 2						
IP Address Setting	Specify an IP Address ▼					
IP Address	192.168.1.10	Name Server Parameter				
Subnet Mask	255.255.255.0	Primary DNS	0.0.0.0			
Default Gateway	192.168.1.1	Primary WINS	192.168.1.1			
Network DiskRemote Host Path						
PC Name	PC	Dir Name	Cnc			
User Name		Password				
Net Status	SyntecFS shared folder doesn't exist.					
Resource Shared						
Shared Folder Path						
				Not Rdy	Auto	Alarm
Save Setting	Cancel		Set Kernel Server	Wifi Module Setting	Syntec EagleEye	

- a. Check whether the "Dir Name" matches any codename in the SyntecFS.config.
 - Note that "Dir Name" is case-sensitive.

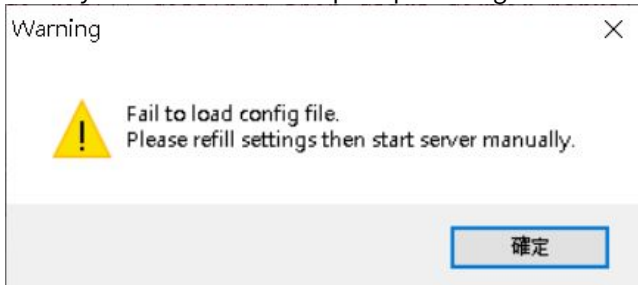
Version 1.0.7 [Version after 1.1.0](#)

1. Cannot connect to the SyntecFS Server
 - a. Troubleshooting
 - i. Check whether the controller's version is under support.
 - ii. Check whether the IP of both controller and PC are under same domain, and can Ping each other.
 - iii. Check whether the SyntecFS Server is outdated.
 - iv. Restart the SyntecFS Server; Restart the controller and check whether the connection is success.
2. Run the SyntecFS Server displays prompt message 「SyntecFS Server is Running」



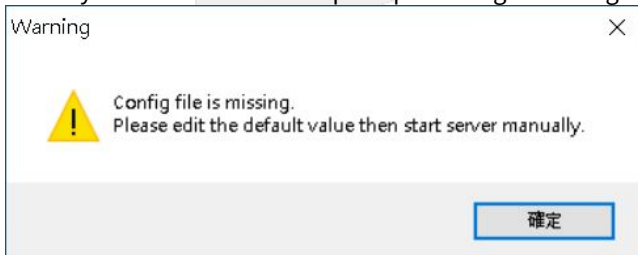
- a. If there already has a service running, execute the SyntecFS Server repeatedly will prompt this message.
(Please check the tool bar located at down-right corner, if there is an existing service still running)
- b. If there is no service running, open task manager, search for SyntecFSServer.exe and terminate the application.

3. Run the SyntecFS Server causes prompt message 「Fail to load SyntecFS.config」



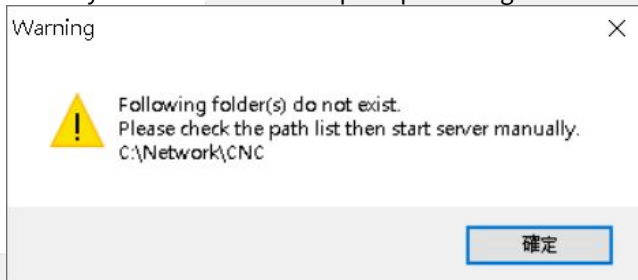
- a. Fail to load config file, please edit shared settings refer to the steps above.

4. Run the SyntecFS Server causes prompt message 「Config file is missing.」



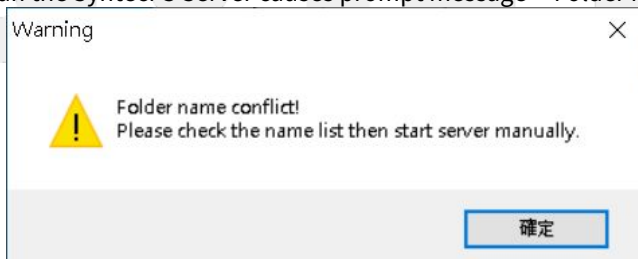
- a. Config file is missing, program will regenerate a new file with default value. Please confirm each setting value.

5. Run the SyntecFS Server causes prompt message 「Following folder(s) do not exist.」

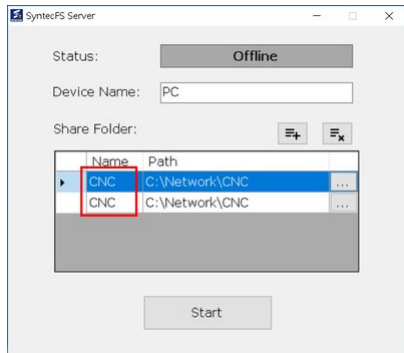


- a. Check whether directories declared in shared folder list exist or not.

6. Run the SyntecFS Server causes prompt message 「Folder name conflict!」



- a. Check whether codenames in the shared folder list are repeated.

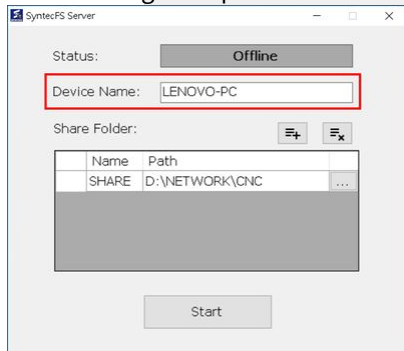


- 7. If there has multiple PC running SyntecFSServer, it is possible that a controller will fail to connect to the designated PC, or miss-connect to another PC.

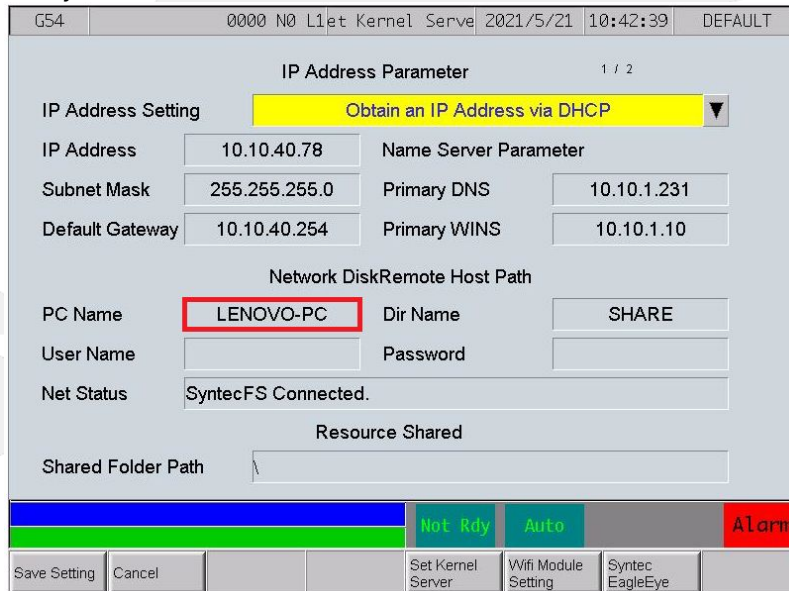
Troubleshooting :

- a. Modify the device name to a unique name which is not being used.

The following example shows the result of changing the value to **LENOVO-PC** :



- b. Modify "PC Name" in the controller as same as the device name above.



8. Changing the "PC Name" or "Dir Name" on controller, the screen still display previous setting after pressing "Save Setting",
 - a. Troubleshooting:
 - i. Reboot the controller and the setting will be updated.
9. Net Status shows "SyntecFS shared folder doesn't exist."

G54	0000 N0 L1et Kernel Serve	2022/2/17	16:27:54	DEFAULT	
IP Address Parameter 1 / 2					
IP Address Setting	Specify an IP Address ▼				
IP Address	192.168.1.10	Name Server Parameter			
Subnet Mask	255.255.255.0	Primary DNS	0.0.0.0		
Default Gateway	192.168.1.1	Primary WINS	192.168.1.1		
Network DiskRemote Host Path					
PC Name	PC	Dir Name	Cnc		
User Name		Password			
Net Status	SyntecFS shared folder doesn't exist.				
Resource Shared					
Shared Folder Path					
			Not Rdy	Auto	Alarm
Save Setting	Cancel		Set Kernel Server	Wifi Module Setting	Syntec EagleEye

- a. Check whether the "Dir Name" matches any codename in the shared folder list of SyntecFS Server.
 - Note that "Dir Name" is case-insensitive.

SYNTEC