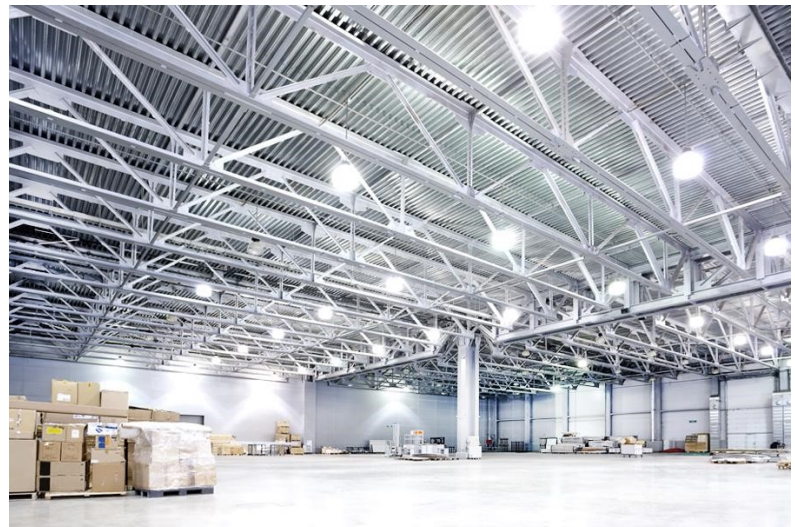


COSGO

UPGRADE YOUR LIGHTSTYLE
BY ELEGANT

LED HIGHBAY

- * Highbay body material made out of aluminium, reflector is designed to cover wide surface areas
- * Input voltage of AC90-265V 50/60Hz, power factor of 0.95, with 98% power saving and CRI \geq 80
- * Working environment temperature between -30°C to 55°C, humidity of 25 60%RH
- * Working lifetime of 30000Hrs
- * Applicable instalments for indoor warehouse, factory, large area to light up the whole place



Specifications:

Model	CSG-100HB	CSG-150HB	CSG-200HB
LED Power Consumption	100W	150W	200W
Lumen Output	10000lm	15000lm	20000lm
Installation Height	4-5m	5-6m	5-6m
CCT	Daylight - 6500K	Daylight - 6500K	Daylight - 6500K
Size Dimension (mm)	445mm*445mm*300mm	445mm*445mm*310mm	500mm*500mm*330mm