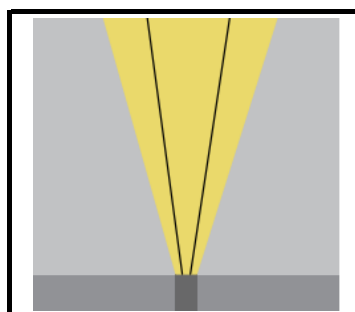
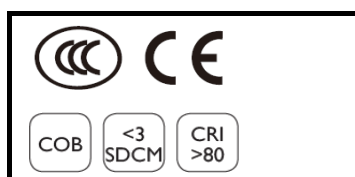
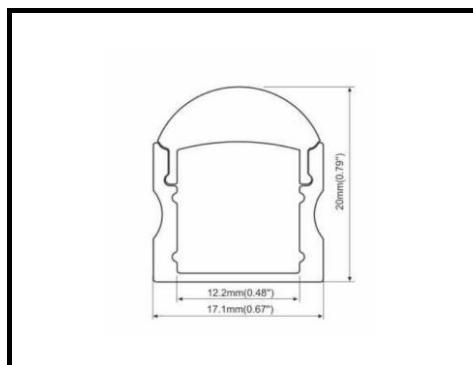
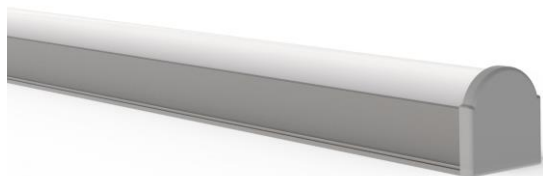


UNDERLINE-WASHER17



UNDERLINE-WASHER17

LED CCT AVAILABLE

2700K

3000K

4000K

6000K

RED (620-630nm)

GREEN (520-530nm)

BLUE (465-475nm)

YELLOW (585-590nm)

RGB

LED RECOMMEND

DOTLESS EFFECT

-FLEXi-COB 5/10/15W

-FLEXi-28 10/15W



Product Description

Silicone Profile;

High IP Rated Protection;

LED Flexible Neon;

2 cable entries. Through

wiring possible. (DC24)

LED module: High Efficiency

SMD LED

Protection mode IP65/67

Weight: 0.5kg

Beam Angle: 30/45/60/

20*45deg

Standard Length: 2000mm

Cut: 17mm

Technical data

| | |
|-------------------|---------------------------|
| Model | UNDERLINE-WASHER17 |
| Luminous flux | 500/1000/1500/2400lm |
| Power Consumption | 5W/10W/15W/24W |
| Lumen Output | >100lm/W |
| Lifetime | 50K Hours |
| Power Factor | > 0.9 |
| Color Rendering | > 80 / 90 |
| SDCM | < 3 |
| UGR | < 19 |
| Lamp Type | Flexi Wall Wash Luminaire |
| Beam Angle | 30/45/60/20*45 deg |
| Housing Material | Aluminium Profile; |
| Housing Color | Anodized Silver |
| Dimension | 2000mm * 17.1mm * 20mm |
| Dimmable | Available ON / OFF |

Optional: 0-10V/ DALI / TRIAC

WETRONIC.