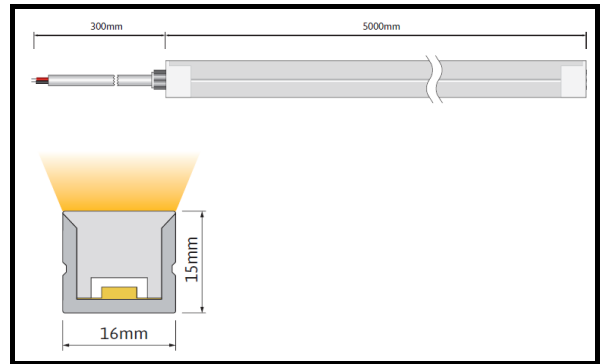
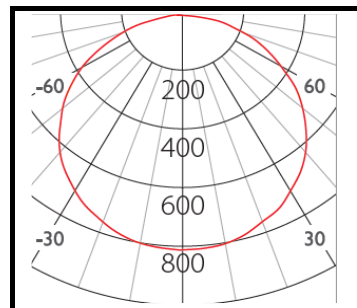
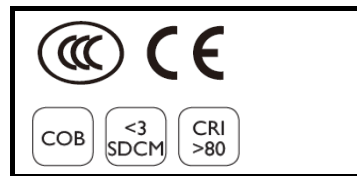


# FLEXiLINE-16T

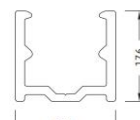
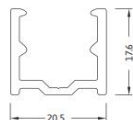
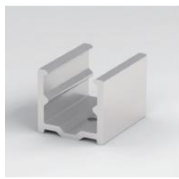
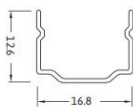


**FLEXiLINE-16T**  
 LED CCT AVAILABLE  
 2700K  
 3000K  
 4000K  
 6000K  
 RED (625-630nm)  
 GREEN (520-530nm)  
 BLUE (465-475nm)  
 YELLOW (585-590nm)  
 RGB

**Product Description**  
 Silicone Profile;  
 High IP Rated Protection;  
 LED Flexible Neon;  
 2 cable entries. Through wiring possible. (DC24)  
 LED module: High Efficiency SMD LED  
 Protection mode IP44/IP67  
 Weight: 0.5kg  
 Beam Angle: 120deg  
 Cut: 50mm



**Bending Direction**  
 TOP-Bend (Max R150mm)



## Technical data

Model	FLEXiLINE16T-W15-24V
Luminous flux	300/600/900lm
Power Consumption	5W/10W/15W
Lumen Output	>60lm/W
Lifetime	50K Hours
Power Factor	> 0.9
Color Rendering	> 80 / 90
SDCM	< 3
UGR	< 19
Lamp Type	NEON Linear;
Beam Angle	120deg
Housing Material	Silicone Profile;
Housing Color	Aluminium
Dimension	5000mm * 16mm * 15mm
Dimmable	Available ON / OFF

Optional: 0-10V/ DALI / TRIAC

**WETRONIC.**