

Lab Master LGH5000 Series

5.0 Purity Header Rail Assemblies



Left handed configuration shown

The **Lab Master** range of header rail assemblies are designed for use with non-corrosive or toxic, high purity gases up to grade 5.0 purity (99.999%). They are intended for use in conjunction with our gas control panels integrated within gas management and distribution systems.

- **LGH5011** Series | Tech Master Universal Left Hand Header, FKM Seal
- **LGH5012** Series | Tech Master Universal Left Hand Header, EPDM Seal
- **LGH5021** Series | Tech Master Universal Right Hand Header, FKM Seal
- **LGH5022** Series | Tech Master Universal Right Hand Header, EPDM Seal

★ FEATURES

- 3 Inlet & 1 Outlet Ports
- Left or Right Hand Configuration
- 1/4" NPT Male Connection
- Supplied with 2 off 1/4" NPT Plugs
- Flat Face 'O' Ring Seal

📖 MATERIAL

- **Bracket** Stainless Steel
- **Body** Nickel Plated Brass Barstock
- **Connecting Tube** Cupro-Nickel
- **Connections** Nickel Plated Brass Barstock

👍 SPECIFICATION

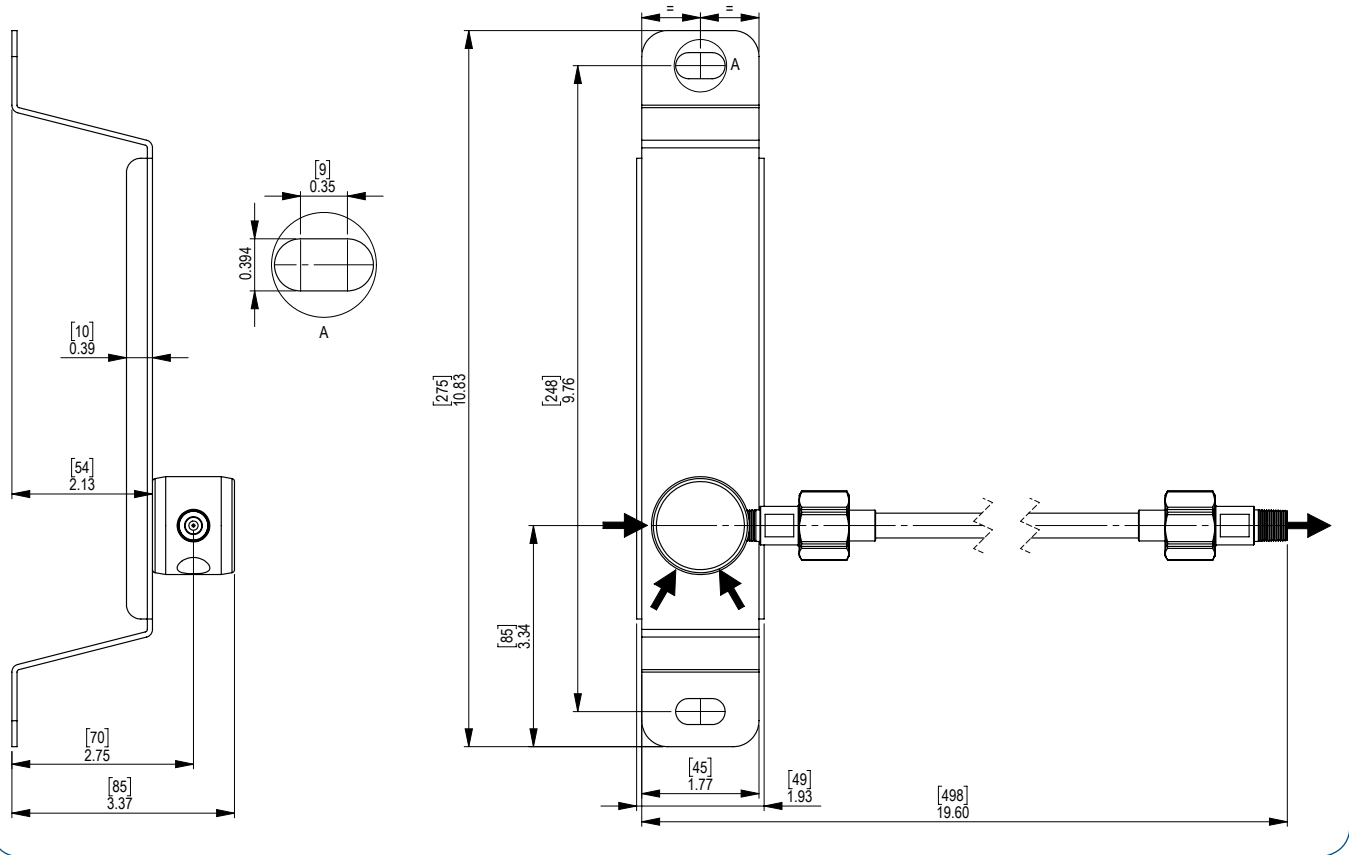
- **Maximum Inlet Pressure** 300 bar (4350 PSI)
- **Ports** 1/4" NPT Female
- **Temperature Range** -20° C to +60° C (-4° F to +140° F)
- **Weight** 0.6 kg (1.32 lb) maximum

1 2 3 MODEL NO. SELECTOR GUIDE

Example for a Model No. for LGH5000 Series

Product Type	Inlet Pressure Bar [PSI]	Options
LGH5011	04 300 [4350]	A No Options Selected
LGH5012		K Certificate of Conformity
LGH5021		X Special Instruction
LGH5022		

DIMENSIONS



CONTROL PANEL WITH HEADER INSTALLATION GUIDE

