



PRODUCTS CATALOGUE



Environmentally friendly product



Pentens ECO AMBASSADOR
DATUK WIRA LEE CHONG WEI

GO GREEN

DJI International (the Group), established in 1989, is one of the leading manufacturers and distributes specialist in building material for all industry which include raised floor system, water-based resin, water resistant floor, low pressure cracks, silicon-rubber waterproofing paint, soft resin mortar for waterproofing and high strength epoxy flooring.

The key vision of the Group is through dynamic and innovative management while teamwork to improve quality of products and services in order to commit excellences. On top of that, our team of architects and engineers are constantly searching for new innovative ideas and processes. Therefore, the group is assured of superior quality, versatility, durable and reliable products.

The Group believes that trust is the most important key in business activities and recognizes improvement in the quality of products and services will gain more consumers' and customers'. Besides that, the Group also aims for a better living society and a wholesome environment.

In parallel with the industrial growth in Malaysia, the Group has diversified into designing and manufacturing of various kinds of industrial building materials. These manufacturing activities have significantly contributed to the role of import substitutions. With the achievement of ISO 9002, recognition in its manufactured products, the Group is presently exporting its manufactured products to 6 countries in Asia Pacific and 4 countries in Middle East.

DJI International is currently establishing distribution centers in other ASEAN countries according to their cost competitiveness and resources, e.g. Dong Ji (M) Sdn. Bhd. (since year 2000).

The Group has also increased its research and development activities in all facets of product design and process innovation, gearing it to move towards the production of greater value-added products as well as improving current production techniques and process based in Taiwan.

Through its globalization plan, the Group seeks to continuously provide quality products and engineering services to all level of industries in Malaysia. Simultaneously, the Group also looks forward to position Taiwan industrial products to be recognized in the international market.

Our Mission

- 🍃 Environmentally Friendly
- 🍃 Clean, Aesthetic, Flexibility
- 🍃 Comfortable and Eternal Quality

Why Choosing PENTENS Green Waterproofing...

- Low VOC.
- A long-term warranty against defects.
- Over 20 years relevant specialist in waterproofing experience.
- Regional manufacturing facility.
- Excellent quality, service and competitive price.



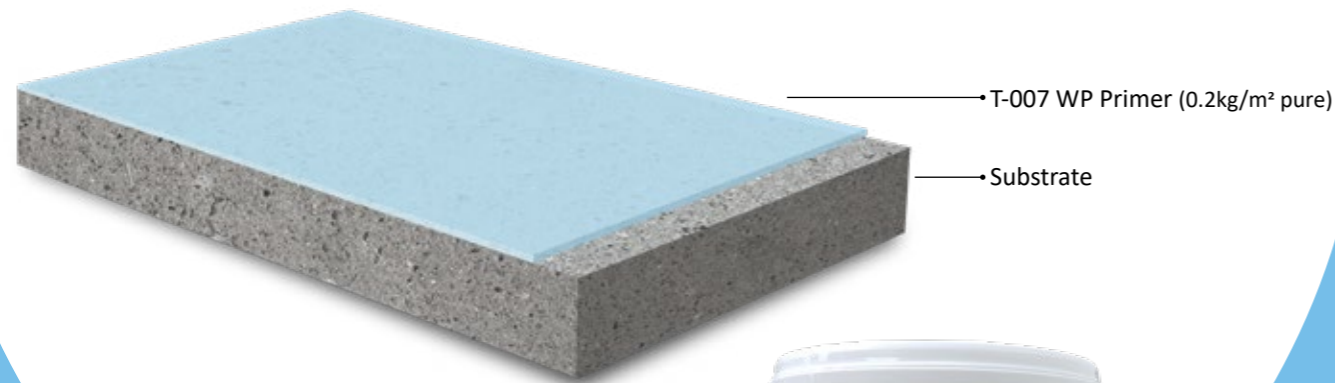
CONTENTS

T-007 Cement Modifier	04	PU-101 & PU-300 High-Pressure PU Grouting Injection Systems	40
T-100 Water-based PU Bituminous Waterproofing Membrane	06	WATERPLUG T-800 Rapid Setting Mortar for Plugging Leaks	42
BITUFLEX 101 Water-based Bituminous Protective Coating	08	DR. WALL Anti-Fungal Compound Coating	44
AB-BOND Cementitious Waterproofing Coating	10	T-801 Polymer Patching Repair Mortar	46
T-305 Cementitious Waterproofing Coating	12	GROUT T-805 Standard Non-Shrink Grout	48
AB-BRUSH Cementitious Waterproofing Slurry	14	Q-SET Plasticising Accelerator	50
EASYCOAT WP1+ One Component Water-based Flexible Cementitious Waterproofing	16	SLATE-SEAL 820 Transparent Protecting Acrylic Coating	51
FLESEAL T-200 Heating Resistant Waterproofing Coating	18	DRAIN CLOG-FREE RENOVATOR Concentrate	52
EASYSOV WP5+ L-210 Synthetic Rubber Based, Waterproof Thermal Insulation Coating	20	E-GROUT Epoxy Putty Adhesive	53
SOLAR FLEX T-202 Solar Reflective Ceramic Coating	22	PENTENS SEAL Self-adhesive Rubberized Asphalt	54
WATERPROF Integral Liquid Waterproofing Admixture	24	PUTTYFILLA Cellulose Filler	55
CIM-WATERPROOFER Concrete And Mortar Waterproofing Admixture	26	PENTENS FLEX 609 Single Component Polyurethane Joint Sealant	56
LATEX 108 Multi-function Bonding Agent	28	PENTENS WOODFILLA Ready-mixed Filler for Interior Woodwork and Furniture	57
AD-BOND LATEX Latex Additives Waterproofing	30	PENTENS AC-1 AWNING CAULK Weather Proof Outstanding Durability Bond Most Material	58
TA FLEX M888 Bonding Agent & Adhesive Strength Additive	32	PENTENS PT-606 SUPER NAILS Construction Adhesive Sealant	59
TA FLEX F1000 High Performance Mortar Adhesive Strength Additive	34	PENTENS 603 Acetic Cure Silicone Sealant	60
TA SUPERFLEX S1000 Super High Performance Mortar Adhesive Strength Additive	36	PENTENS 605 Neutral Cure Silicone Sealant	61
TA-BOND 888 Tile Adhesive Floor And Wall Thin-set Mortar	38	PENTENS 607 Acrylic Cure Silicone Sealant	62
		PROJECT REFERENCES	63

PENTENS

T-007

Cement Modifier



ADVANTAGES

- Good mechanical and chemical properties.
- Strengthen the water resistance and anti-impact
- Enable the filling element with good compatibility and dispersibility.
- Low bubbling.
- Anti-freezing.
- Less dusting.
- Superb adhesive strength.
- Can be apply directly on damp or wet surfaces.
- Flexural strength.
- Non-corrosive.
- Non-flammable.
- Non-toxic.

Areas of application include:

- Waterproofing primer
- Bonding agent
- Manhole liners
- Repair mortar
- Angle fillets
- New and old concrete bonding agent
- Multi-purpose adhesive

PENTENS T-007 is a 100% acrylic cement modifier based on a proven 100% acrylic polymer designed to improve the chemical, corrosion, moisture and salt resistance of cement renders. It is superior compared to most PVA and SBR-based modifiers because of its superior durability and resistance to hydrolysis. It has been specially formulated for use in high alkaline cement environments. Cement mortars based on PENTENS T-007 will adhere to a wide range of materials such as metals, timber, insulation foams as well as new and old concrete.

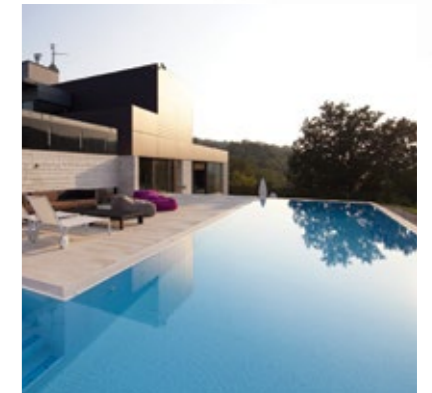
Method of Statement



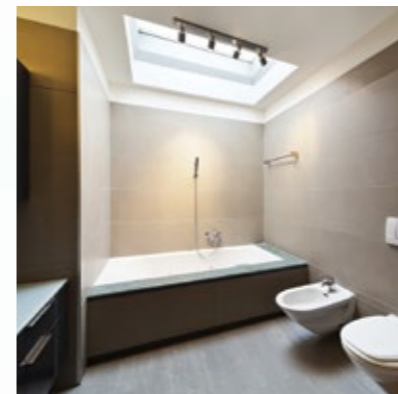
1 Add 1 litre of T-007 & 3 litres water to mix container.



2 Apply T-007 as a primer layer.



Suitable for swimming pool.



Suitable for bathroom.



Suitable for green roof.



Suitable for lift area.

Technical & Physical Data

Form	Emulsion
Appearance	Milky
Density (kg/ltr)	1.01
Solid Content (%)	>45
Viscosity (Brookfield), (cP)	3000 (approx.)
Mixing Ratio :	
PENTENS T-007	1
Water	3
Shelf Life	1 year when unopened and undamaged

Storage Condition	Store in a dry, cool place
Packaging	4kg /pail 20kg /pail

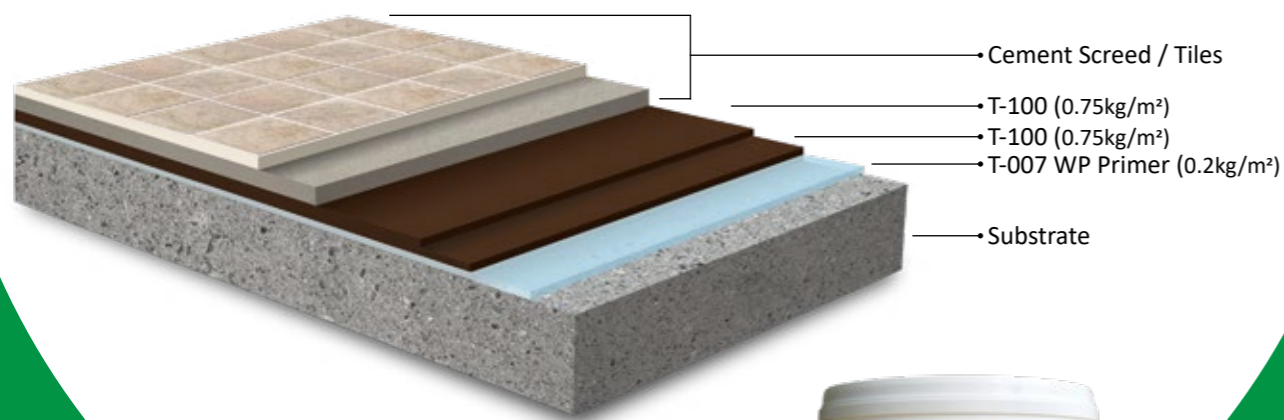


Environmentally friendly product

PENTENS



Water-based PU Bituminous Waterproofing Membrane



ADVANTAGES

- Low VOC & Non-formaldehyde.
- Environmentally friendly.
- High elasticity.
- Will bond to most surface.
- Does not run or creep under heat.
- Resists to wide range of acids and alkalis.
- Can be applied directly on damp or wet surfaces.
- Odourless and produces no fumes.
- Non-toxic.

Areas of application include:

- Basement
- RC flat roof
- Floor slabs
- Patios
- Terraces
- Balconies
- Internal wet area
- RC gutter
- RC planter box
- Lift pit
- Retaining walls
- Swimming pool
- Fountain

PENTENS T-100 is a single component, newly developed polymer of MMA, natural rubber, and polyurethane combined with asphalt and then modified and further emulsified to form an elastic waterproof membrane. PENTENS T-100 is an environmentally friendly and low VOC material.

Method of Statement



1 Apply T-007 as a primer layer.



2 Open the cover of T-100.



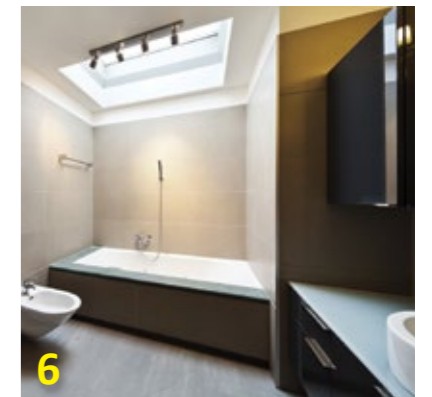
3 Mix thoroughly.



4 Apply directly to construction surface by using brush, roller or spray method.



5 Finish with cement screed or tile.



6 Finish with cement screed or tile.

Technical & Physical Data

Form	Liquid
Colour	Black coffee
Solid Content (%) (SS 133:1987 Appendix D)	73.90
Shore A Hardness (ASTM D2240:2005)	57
Crack Bridging (ASTM C 835:00)	2mm
Tensile Strength (N/mm ²) (ASTM D 412-98)	3.1
Elongation at Break (%) (ASTM D 412-98)	1128.6
Tear Strength (kgf/cm ²) (CNS 6986, CNS 6988)	14.7
Water Penetration (DIN 1048 Part 5:1991)	0

Water Vapour Transmission of Materials (ASTM E96/ E96M:2005)	18 g/m ² /24 hrs
Puncture (kgf) (ASTM E154)	19
Chemical Resistance (10% HCOOH, 60°C, 24 hrs)	No Changes on the surface of the sample
Shelf Life	1 year when unopened and undamaged
Storage Condition	Store in a dry, cool place
Packaging	5kg / pail 20kg / pail

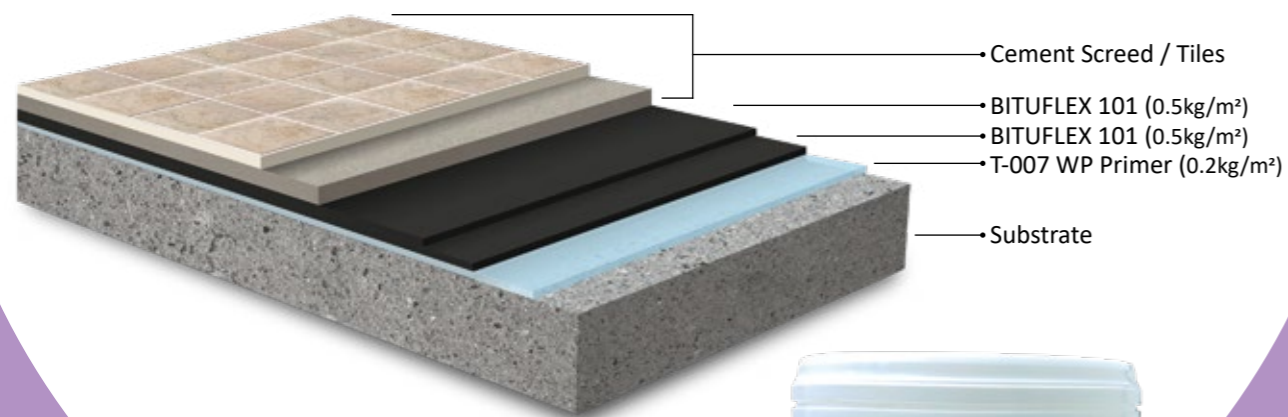


Environmentally friendly product

PENTENS BITUFLEX

101

Water-based Bituminous Protective Coating



ADVANTAGES

- Easy to apply and flexible.
- Chemical resistant.
- Single component.
- Superb adhesive strength.
- Can apply directly on damp or wet surfaces.
- Efficient curing agent.
- Abrasion resistant.
- Good waterproofing properties.
- Resistant to any bubbling or side osmosis.
- Phenomenon even submerge in water for a long time.
- Capable of re-application.
- Quick drying.
- Non-toxic.

Areas of application include:

- Damp proof courses
- Suspended floors
- Terraces and balconies
- Corrosion protective to metal surface
- Bathrooms
- RC gutters and planter boxes
- Linings to tanks and pipes
- Below ground concrete protection
- Basements and fountains
- Retaining walls

PENTENS BITUFLEX 101 is a low viscosity blend of water-based bituminous specially formulated to produce a tough and durable bituminous film when dry. It is a single-component newly-developed polymer of MMA, natural rubber and polyurethane combined with asphalt and then modified and further emulsified to form an elastic waterproof membrane.

Method of Statement



1 Apply T-007 as a primer layer.



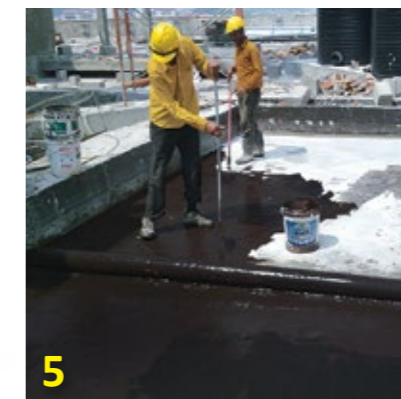
2 Open the cover of BITUFLEX 101. Add 0.7kg clean water to mix container.



3 Mix thoroughly.



4 Apply directly to construction surface by using brush, roller or spray method.



5 Apply first layer of BITUFLEX 101.



6 Cover with cement screed after 2nd layer.

Technical & Physical Data

Form	Liquid
Color	Black
Density (CNS 6986, CNS 6988)	1.02
Full Dry Time	24 hours
Tack Free Time	30 - 60 mins
Overcoating	8 hours
Tear Strength (kgf/cm ²) (CNS 6986, CNS 6988)	11
Chemical Resistance (10% HCOOH, 60°C, 24hrs)	No changes in the surface of the sample
Shelf Life	1 year when unopened and undamaged
Storage Condition	Store in a dry, cool place
Packaging	5kg /pail 18kg /pail

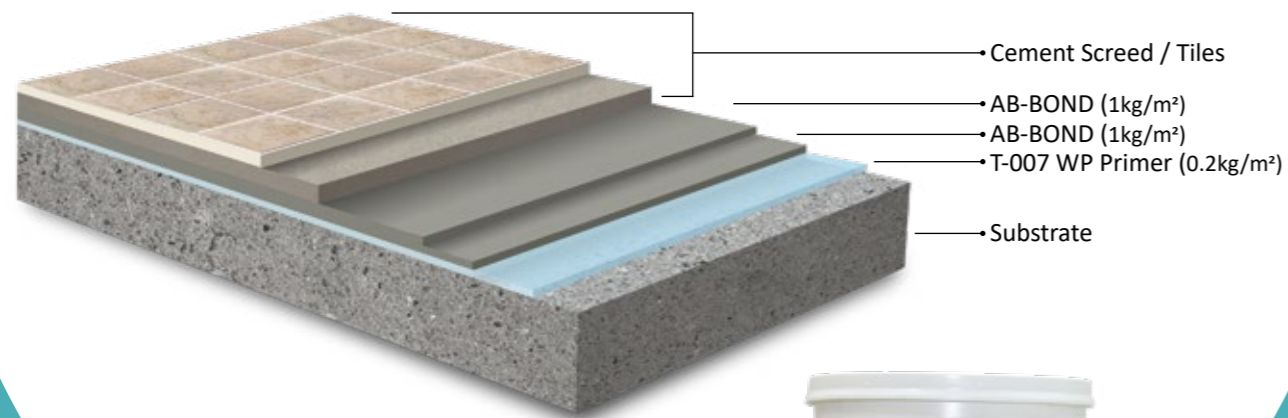


Environmentally friendly product

PENTENS

AB-BOND

Cementitious Waterproofing Coating



ADVANTAGES

- Low VOC.
- Environmentally friendly.
- Pre-batched and ready for used.
- High workability.
- Good adhesive to sound substrate.
- Can be applied directly on damp or wet surface.
- Impermeable.
- Frost and salt resistance.
- Resist carbon dioxide penetration.
- Slightly flexible.
- Capable of re-application.
- Non-toxic.

Areas of application include:

- Potable water tanks
- Terraces and balconies
- RC gutters
- Bathroom floors and walls
- Basements
- Retaining walls
- Seawalls

PENTENS AB-BOND is cement based waterproofing coating incorporates 2 polymer components. Apply directly to concrete and mortar to prevent water infiltration.

Method of Statement



1 Apply T-007 as a primer layer.



2 Open the cover of AB-BOND. (have 1kg pail resin inside)



3 Add resin (part A) to a empty pail. Add 0.7kg clean water to mix container.



4 Mix with cement powder.



5 Mix thoroughly.



6 Apply directly to construction surface by using brush or roller.

Technical & Physical Data

Tensile Strength (kgf/cm ²) (ASTM D412 (Die C))	8.3	Abrasive Test (g) Taber CS-17, 1000g, 1000 Cycles (ASTM C501)	0.043
Elongation (%) (ASTM D412(Die C))	24.30	Puncture (kgf)	9
Tear Strength (kgf/cm) (ASTM D624)	7.20	Compressive strength @28 days (n/mm ²)(ASTM E154)	>40
Hardness (Shore A) (ASTM D2240)	54	Pot Life	30 min at 30°C and will be shortened at higher temperatures
100% Modulus of Elasticity (kgf/cm ²) (ASTM D412 (Die C))	5.80	Shelf Life	12 months when unopened
Shear Strength (kgf/cm ²) (ASTM D1002)	4.70	Storage Condition	Store in a dry cool place
Water Vapor Transmission of Material		Packaging	Part A: 1kg / 4kg Part B: 5kg / 20kg
i. WVT(g/hxm ²)(23°C,50%)- ASTM E96	37		
ii. Permeance (g/sxm ² xPa)- Method B	1.98 x 10 ⁻⁵		

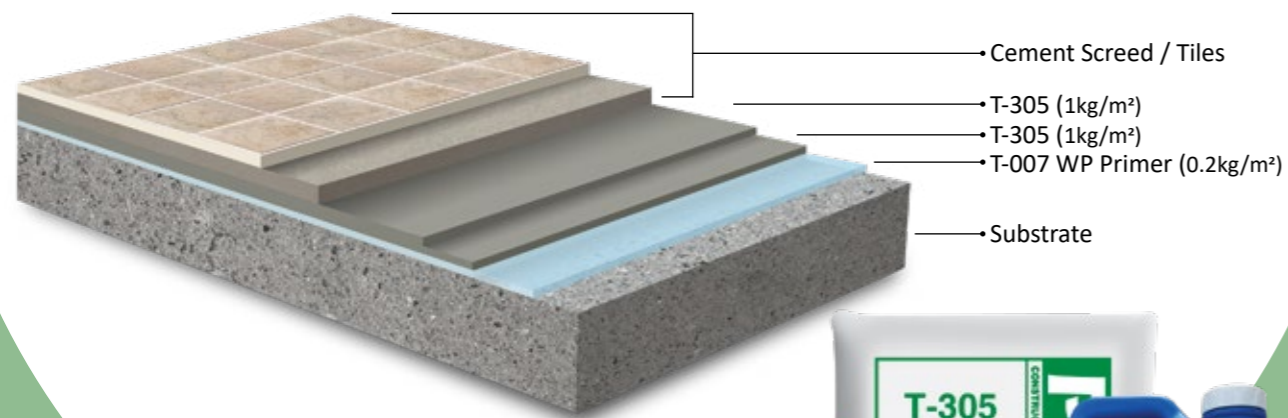


Environmentally friendly product

PENTENS

T-305

Cementitious Waterproofing Coating



ADVANTAGES

- Low VOC.
- Environmentally friendly.
- Pre-batched and ready for used.
- High workability.
- Good adhesive to sound substrate.
- Can be applied directly on damp or wet surface.
- Impermeable.
- Frost and salt resistance.
- Resist carbon dioxide penetration.
- Slightly flexible.
- Capable of re-application.
- Non-toxic.

Areas of application include:

- Potable water tanks
- RC gutters
- Bathroom floors and walls
- Basements
- Seawalls

PENTENS T-305 is a cement-based waterproofing coating which incorporates two polymer components. It is applied directly to concrete and mortar to prevent water infiltration.

Method of Statement



1 Apply T-007 as a primer layer.



2 Add resin (part A) to a empty pail.



3 Add powder (part B) to mix container.



4 Mix thoroughly.



5 Apply directly to construction surface by using brush, roller or spray method.



6 After 2 layers cover with cement render.

Technical & Physical Data

Tensile Strength (kgf/cm ²) (ASTM D412 -98a)	22.9	Abrasive Test (g) – Taber CS-17, 500g, 10000 Cycles (ASTM D4060-01)	1.0021
Elongation (%) (ASTM D412 (Die C)	24.30	Puncture (kgf)	9
Tear Strength (kgf/cm) (ASTM D624)	7.2	Compressive Strength @28 days (n/mm ²) (ASTM E154)	>40
Hardness (Shore A) (ASTM D2240)	54	Pot Life	30 min at 30°C and will be shortened at higher temperatures
Pull-off Strength (psi) (ASTM D4541)	306	Shelf Life	12 months when unopened
Water Absorption (%) (BS 1881-122:1983)	0.42	Storage Condition	Store in a dry, cool place
Water Vapor Transmission of Material (ASTM E96)	1.9 g/h.m ²	Packaging	
		• T-305A	9kg /pail
		• T-305B	25kg /bag

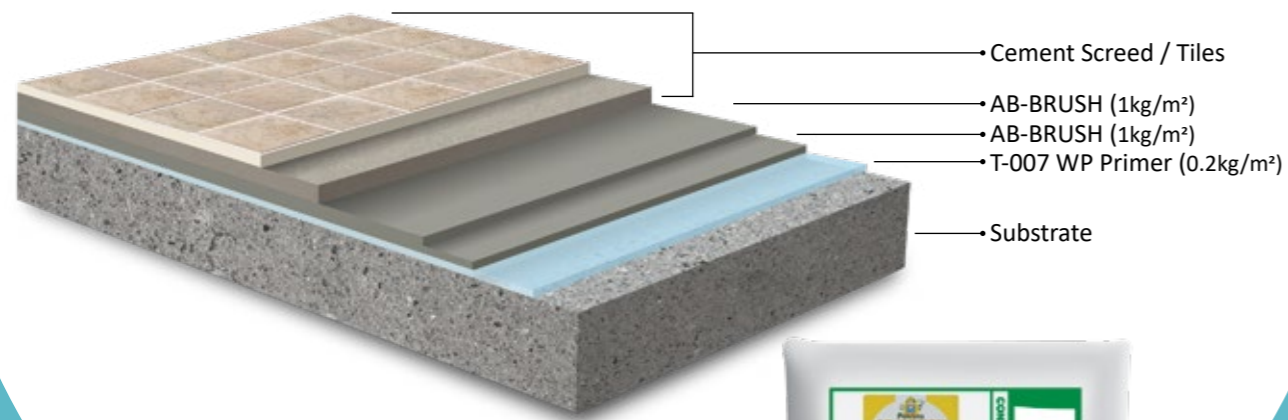


Environmentally friendly product

PENTENS

AB BRUSH

Cementitious Waterproofing Slurry



ADVANTAGES

- Low VOC.
- Environmentally friendly.
- Pre-batched and ready for used.
- High workability.
- Good adhesive to sound substrate.
- Can be applied directly on damp or wet surface.
- Impermeable.
- Frost and salt resistance.
- Resist carbon dioxide penetration.
- Slightly flexible.
- Capable of re-application.
- Non-toxic.

Areas of application include:

- Potable water tanks
- Basements
- Retaining walls
- Seawalls
- Terraces and balconies
- RC gutters
- Bathroom floors and walls
- Swimming pool

PENTENS AB BRUSH is cement based waterproofing coating incorporates 2 polymer components. Apply directly to concrete to prevent water infiltration.

Method of Statement



1 Apply T-007 as a primer layer.



2 Add resin (part A) to an empty pail.



3 Add powder (part B) to mix.



4 Mix thoroughly.



5 Apply directly to construction surface by using brush, roller or spray method.



6 After 2 layers cover with cement render.

Technical & Physical Data

Tensile Strength (kgf/cm ²) (ASTM D412 (Die C))	8.3
Elongation (%) (ASTM D412(Die C))	20
Tear Strength (kgf/cm) (ASTM D624)	7.20
Hardness (Shore A) (ASTM D2240)	54
100% Modulus of Elasticity (kgf/cm ²)(ASTM D412 (Die C))	5.80
Shear Strength (kgf/cm ²) (ASTM D1002)	4.70

Compressive strength @ 28 days (n/mm ²)(ASTM E154)	>40
Pot Life	30 min at 30°C and will be shortened at higher temperatures
Shelf Life	12 months when unopened
Storage Condition	Store in a dry cool place
Packaging	
• Part A	5.5kg /pail
• Part B	17kg /bag

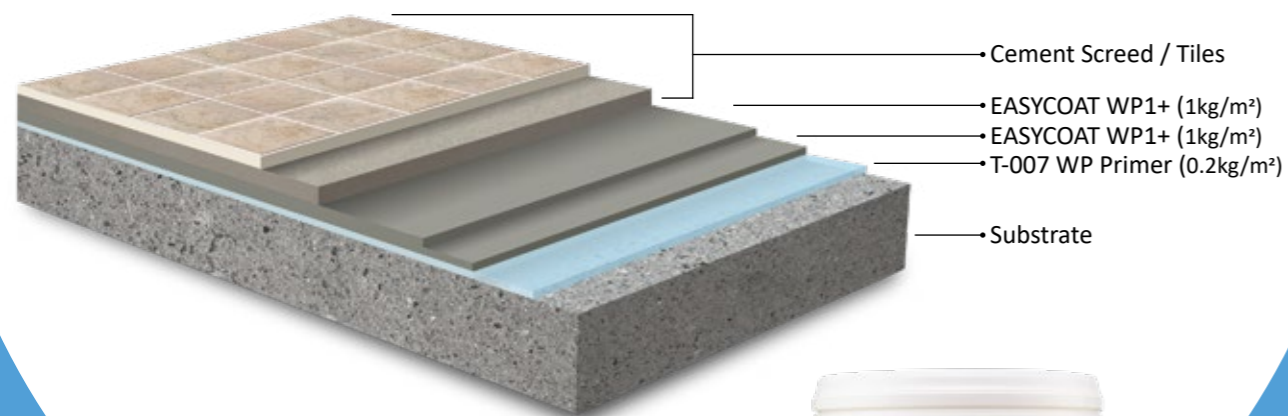


Environmentally friendly product

PENTENS EASYCOAT

WP1+

One Component Water-based Flexible Cementitious Waterproofing



ADVANTAGES

- Easy to apply, can be directly coated on the damp surface.
- High flexibility.
- High water resistance.
- Low water absorption.
- Non-toxic.
- Excellent adhesion to brick work, concrete / masonry, other cement bound surface.
- Permeable to water vapor.
- Ultimate weather resistance.

Areas of application include:

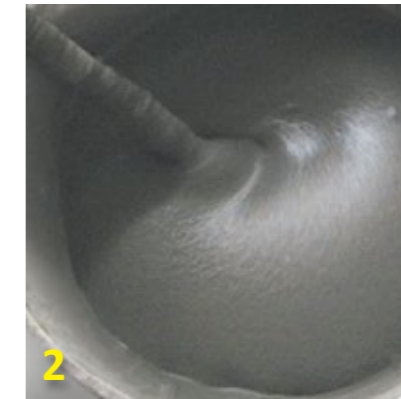
- Bathrooms, toilets and kitchens
- Roofs and balconies
- Water tanks
- Suspended floors
- RC gutters
- Floor slabs
- Basements and fountains
- Retaining walls
- Swimming pools and fountains
- Crack sealer
- Protective coating

PENTENS EasyCoat WP1+ is a one-component water-based, flexible, and easy-to-apply cementitious waterproofing system. It can be applied as the intermediate coating of waterproof material. It has a leveling effect on work surfaces that are uneven or with cracks and gaps. It also increases the thickness of the waterproofing layer and strengthens the work surface.

Method of Statement



1 Apply T-007 as a primer layer.



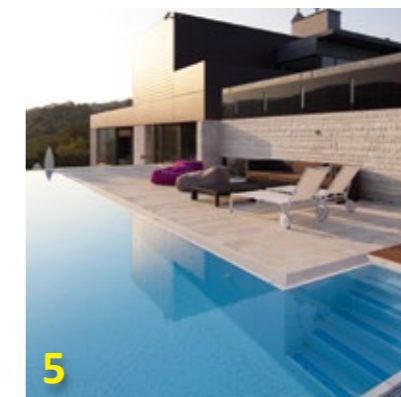
2 Mix thoroughly. (Can add 3-5% clean water to mix container)



3 Apply directly to construction surface by using brush, roller or spray method.



4 Finish with cement screed or tile.



5 Complete.



6 Complete.

Technical & Physical Data

Tensile Strength (kgf/cm) (ASTM D412 (Die C))	>13
Elongation (%) (ASTM D412 (Die C))	>150
Tear Strength (kgf/cm) (ASTM D624)	>10
Hardness (Shore A) (ASTMD624)	>4
100% Modulus of Elasticity (kgf/cm) (ASTM D412 (Die C))	13
Shear Strength (kgf/cm) (ASTM D1002)	7.2
Water Absorption (%) (ASTM D1002)	<0.50

Puncture (kgf)	9
Shelf Life	12 months when unopened
Storage Condition	Store in a dry, cool place
Color	Cement Grey
Application Temperature Range (°C)	5 to 45
Service Temperature Range (°C)	5 to 50
Packaging	6kg /pail 11.5kg /pail 22.5kg /pail

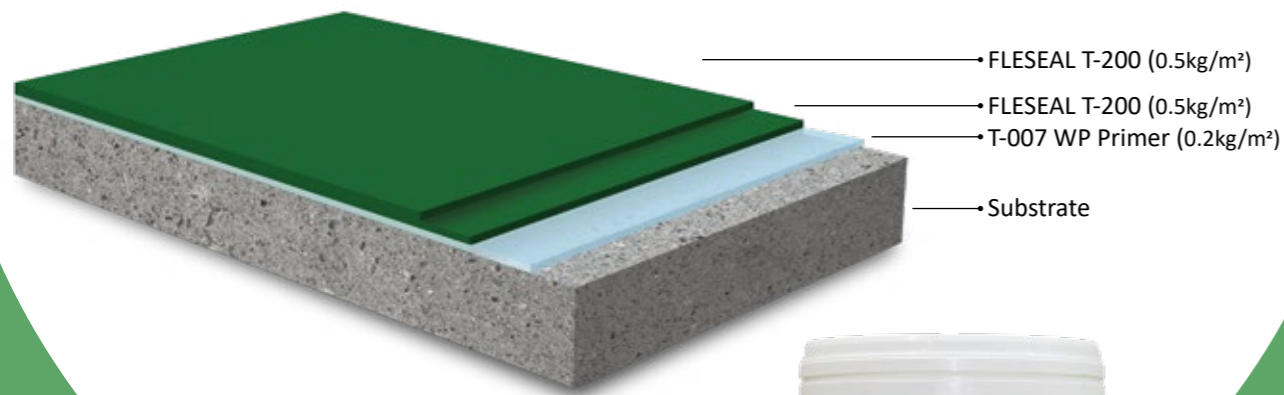


Environmentally friendly product

PENTENS FLESEAL

T-200

Heating Resistant Waterproofing Coating



ADVANTAGES

- Low VOC.
- Water based and non-formaldehyde.
- UV protection.
- No blistering, cracking and peeling.
- Chemical resistant and waterproof.
- User friendly, suitable use on any surface.
- Adheres well over, galvanized and metal roofs, wood, asphalt or aluminium coatings, polystyrene foam insulation, polyester plastic panels, precast flat concrete and barrel cement tiles and many roofing materials.
- Prevention of ravages of acid rain, freeze-thaw, cycles, sunlight, bacteria and fungus.

Areas of application include:

- RC gutter
- RC planter boxes
- Floor slabs
- External decks, landscaped area
- External wall
- Wood siding / fences
- RC flat roof
- Metal / steel roof
- New / old masonry and concrete
- Terraces, balconies and services yards

PENTENS FLESEAL T-200 is based on a newly developed acrylic polymers which dramatically reduces solar heat absorption in either air-conditioned or non-air conditioned buildings. PENTENS FLESEAL T-200 is an environmentally friendly and low VOC material. It takes the majority of the heat load off a building's exterior walls and reduces temperature to approximately that of outside shade.

Method of Statement



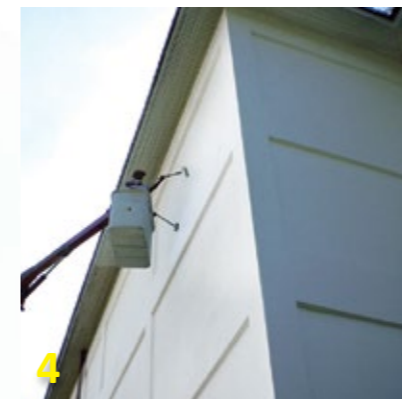
1 Apply T-007 as a primer layer.



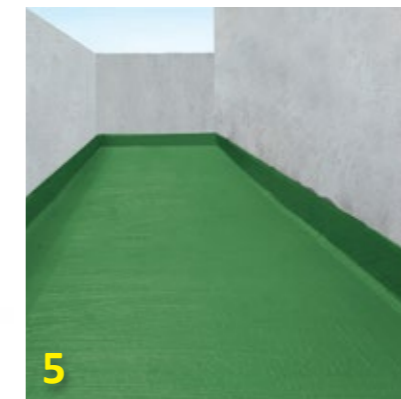
2 Open the cover of FLESEAL T-200 and mix thoroughly. (Can add 0.3kg clean water to mix container.)



3 Apply directly to construction surface by using brush, roller or spray method.



4 Also can use to internal or external wall. (white colour finishing)



5 Green colour finishing.



6 Grey colour finishing.

Technical & Physical Data

Form	Liquid
Colour	Grey, white, green
Resin	Acrylic
Density	1.30 kg/litre
Solid Content	>60% by weight
Elongation (ASTM D412)	197.4%
Tensile Strength (ASTM D412)	3.5 N/mm ²
Reflectivity (Light Color)	>75%
QUV Accelerated Weathering	No cracking
Application Temperature	5°C to 50°C
Service Temperature	5°C to 100°C
Shelf Life	At least 1 year when unopened and damaged

Storage Condition	Store in a dry, cool place
Packaging	1.5kg /pail 5kg /pail 20kg /pail

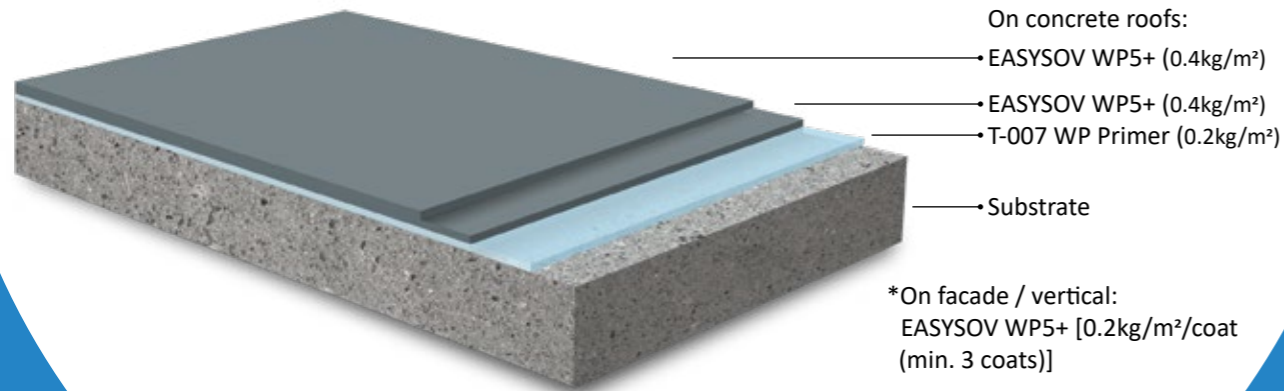


Environmentally friendly product

PENTENS EASYSOV

WP5⁺

L-210 Synthetic Rubber Based,
Waterproof Thermal Insulation Coating



ADVANTAGES

- The cured resilient film presents fine resistance to water, corrosion, thermal, acoustic and abrasion.
- Great workability, strength and durability.
- Good adhesion to concrete, metal and plastic.
- UV blockers, weather resistant.
- No blistering, cracking and peeling.
- User friendly, suitable use on any surface.
- Can withstand foot traffic.
- Water-based, can be applied on damp surface.

Areas of application include:

- Sealing
 - Cracks and joint on RC roof
 - Wall and ceiling
- Waterproofing
 - Roof
 - Wall
 - Gutter
 - Zinc
 - Metal Roof
 - Planter boxes

PENTENS EasySov WP5+ is a state-of-the-art 5-in-1 multifunctional synthetic rubber-based waterproofing product. The use of ultra-high pressure water jet cutting process in treating recycled rubber granules to replace the greater part of conventional fillers and aggregates in the product formulation (up to 40% of the total product weight) making PENTENS EasySov WP5+ an eco-friendly coating with extraordinary physical properties.

Method of Statement



1 Apply T-007 as a primer layer.



2 Open Pentens EasySov WP5+ and mix thoroughly. (Can add 0.3kg clean water to mix container)



3 Apply directly to construction surface by using brush or spray.



4 Apply directly to construction surface by using roller.



5 Apply second layer after 4 hours.



6 Complete.

Technical & Physical Data

Form	High viscosity paste
Colour	Greyish-white
Resin	100% acrylic
Solid Content (%)	>80
Water Absorption (%) (BS1881-122:1983)	0.78
Elongation (%) (ASTM D412-06ae2)	>60
Tensile Strength at Peak (ASTM D412-06ae2)	1.6 N/mm ²
Thermal Transmission (W/mK)	<0.1
Corrosion Resistance (ASTM G8-96 60 days)	No peeling, cracking, blistering
Shelf Life	1 year when unopened and damaged

Storage Condition	Store in a dry, cool place
Packaging	5kg /pail 20kg /pail

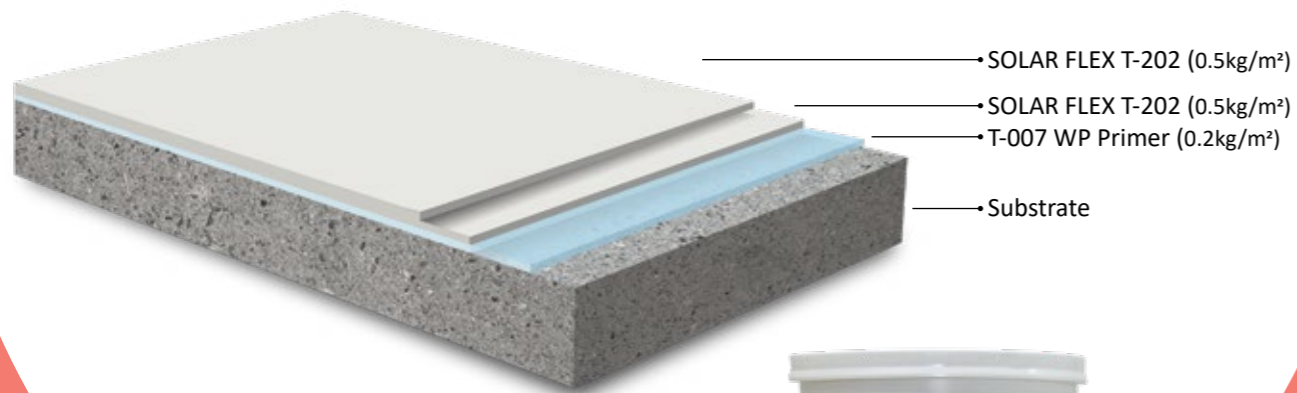


Environmentally friendly product

PENTENS SOLAR FLEX

T-202

Solar Reflective Ceramic Coating



ADVANTAGES

- Low VOC.
- Environmentally friendly.
- Excellent adhesion and durability.
- Excellent weather resistance.
- Excellent abrasion resistance.
- Good impact strength.
- Good flexibility.
- Freeze-thaw resistant.

Areas of application include:

- Prepared concrete
- Masonry
- Steel structure

PENTENS SOLAR FLEX T-202 is a single component, water-based, ready-mixed, acrylic-based, coarse-textured decorative and protective finishing coat that can be applied over prepared concrete, masonry and steel structures.

Method of Statement



1 Apply T-007 as a primer layer.



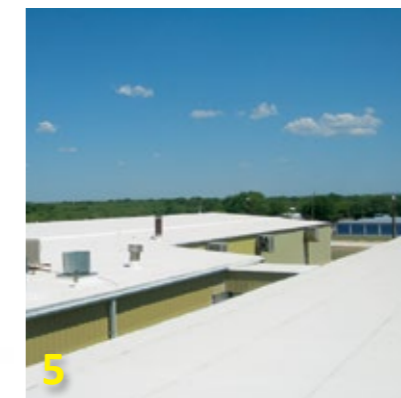
2 Open & mix thoroughly. (Can add 10% clean water to mix container)



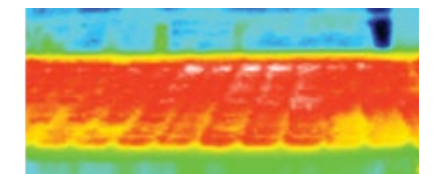
3 Apply directly to construction surface by using brush, roller or spray method.



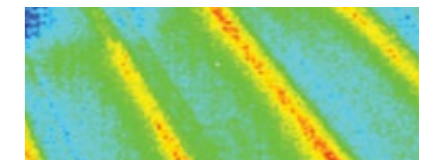
4 Apply second layer after 4 hours.



5 Complete.



Uncoated 46.7°C (Surface temp.)



Coated 38.4°C (Surface temp.)

Technical & Physical Data

Form	Thick Liquid	Solar Reflectance Index (SRI) - at 0.12 W/m ² K	110
Colour	White (Custom colors are available upon request)	Reflectance (%)	87.5
Resin	100% Acrylic	Thermal Emittance	0.84
Density	1.50±0.1 kg/litre	Touch Dry	1 to 2 hours
Solid Content	>65% by weight	Recoat Time	1 to 2 hours
Elongation (CNS 3553)	>60%	Full Cure	5 days
Tensile Strength (CNS 3553)	>12 kgf/cm ²	Application Temperature	5°C to 40°C
Tear Strength	>10 kgf/cm ²	Service Temperature	0°C to 80°C
(CNS 3559 Type B)		Shelf Life	At least 1 year when unopened and undamaged
Adhesive Strength		Storage Condition	Store in a dry, cool place
- Steel (CNS 5606)	>4 kgf/cm ²	Packaging	4kg /pail 16kg /pail
- Concrete (CNS 10142)	>40 kgf/cm ²		
Thermal Transmission (mean temperature: 30±50°C) (ASTM C518)	<0.12 W/m ² K		



Environmentally friendly product

PENTENS WATERPROF

Integral Liquid Waterproofing Admixture



ADVANTAGES

- Reduces surfaces absorption.
- Improved workability and plasticity.
- Minimizes cracking and plastic shrinkage.
- Minimizes bleeding and segregation.
- Provides integral protection, ensuring reduced permeability throughout the concrete.
- Integral protection is maintained even if surface damage occurs.
- Lower water: cement ratio improves compressive strength at same workability.

Areas of application include:

- Potable water tanks
- RC gutters
- Bathroom floors and walls
- Basement
- Terraces and balconies

PENTENS WATERPROF is an integral waterproofing system specially designed for the complete and permanent waterproofing of mass and reinforced structures, ready-mixed and precast concrete, etc.

Method of Statement



1 Mix together 50kg cement & 150kg sand.



2 Add 15 litres clean water to mix container.



3 Add 4 litres Pentens Waterproof in cement sand.



4 Mix thoroughly.



5 Then evenly pour the material on the construction surface.



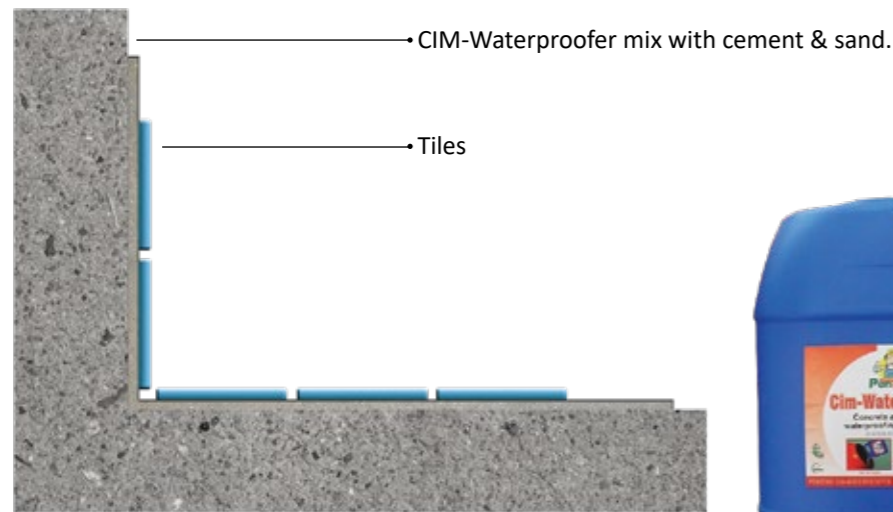
6 Complete.

Technical & Physical Data

Form	Liquid
Appearance	Milky
Specific Gravity	Typical 1.10 at 20°C
Freezing Point	Approximately -4°C
Shelf Life	12 months in unopened original pail and when stored in a dry cool place.
Packaging	4L /pail 20L /pail

PENTENS CIM-WATERPROOFER

Concrete And Mortar Waterproofing Admixture



ADVANTAGES

- Reduces surfaces absorption.
- Improved workability and plasticity.
- Minimizes cracking and plastic shrinkage.
- Minimizes bleeding and segregation.
- Provides integral protection, ensuring reduced permeability throughout the concrete.
- Integral protection is maintained even if surface damage occurs.
- Lower water: cement ratio improves compressive strength at same workability.

Areas of application include:

- Potable water tanks
- RC gutters
- Bathroom floors and walls
- Basement
- Terraces and balconies

PENTENS CIM-WATERPROOFER is concrete and mortar waterproofing admixture. Modified polymer liquid admixture that acts as a highly efficient plasticiser and waterproofing agent.

Method of Statement



1 Mix together 50 kg cement & 150 kg sand.



2 Add 15 litres clean water to mix container.



3 Add 4 litres Pentens CIM-Waterproofer in cement sand.



4 Mix thoroughly.



5 Apply directly to construction surface by using brush, roller or spray method.



6 Complete.

Technical & Physical Data

Form	Liquid
Appearance	Black Coffee
Specific Gravity	Typical 1.10 at 20°C
Freezing Point	Approximately -4°C
Shelf Life	12 months in unopened original pail and when stored in a dry cool place.
Packaging	4L /pail 20L /pail

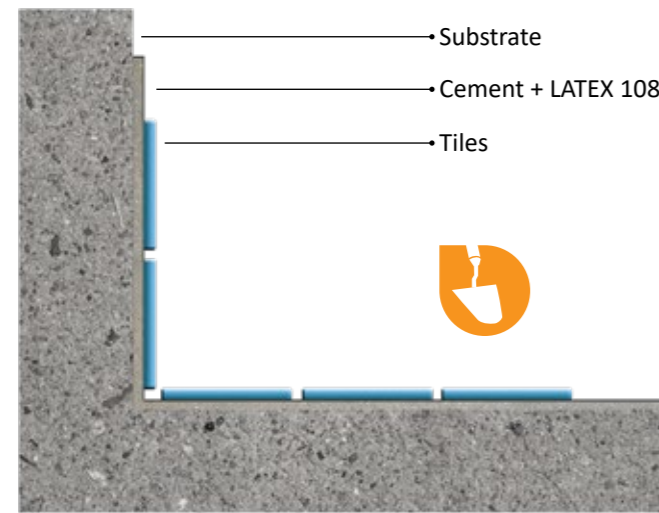


Environmentally friendly product

PENTENS LATEX

108

Multi-function Bonding Agent



ADVANTAGES

- Easy to use, only mix with cement on the job site.
- Excellent adhesion and durability.
- Crack resistance.
- Good flexural strength.
- Good impact strength.
- Freeze-thaw resistance.
- Vapor permeable.
- Low alkalinity.
- Excellent water resistance.

Areas of application include:

- As a base coat for floor screeds
- As a flexible adhesive for tiling, glazing
- As a flexible patching mortars
- As a concrete repair mortars
- As a abrasion resistant linings

Method of Statement



1 Mix together 50 kg cement & 150 kg sand.



2 Add 15 litres clean water to mix container.



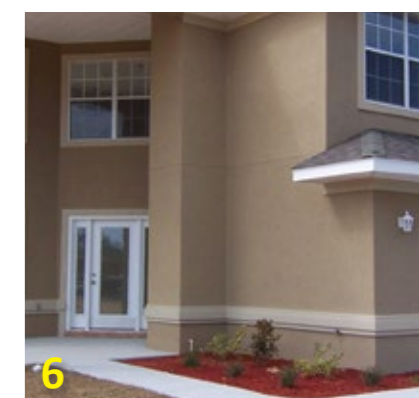
3 Add 4 litres Pentens Latex 108 in cement sand.



4 Mix thoroughly.



5 Apply directly to construction surface by using cement knife.



6 Complete.

Technical & Physical Data

Form	Liquid
Colour	Milky white
Density	1.02
(CNS 6986, CNS 6988)	
Mixing Ratio : (by weight)	
Latex 108	1
Cement	1
Working Time (at 25°C)	40 minutes
Dry Time (at 25°C)	6 hours
Curing Time (at 25°C)	24 hours
Bond Strength (7 days)	
- on Concrete	10 kgf/cm ²
- on Polystyrene Board	2.0 kgf/cm ²

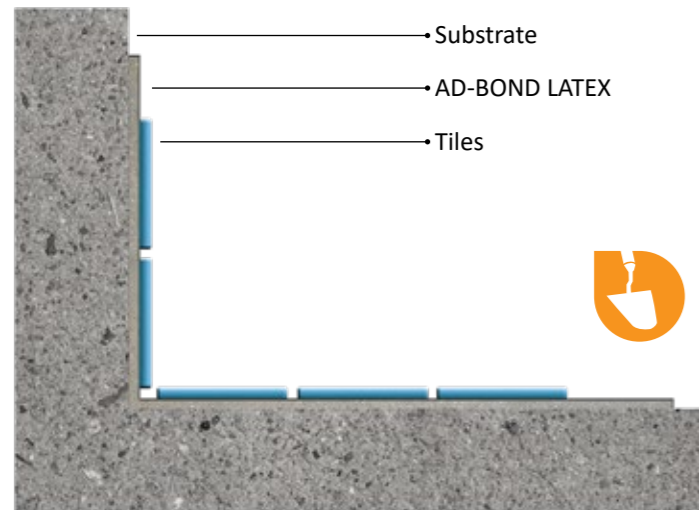
Shelf Life	1 year when unopened and undamaged
Storage Condition	Store in a dry, cool place
Packaging	4L /pail 18L /pail



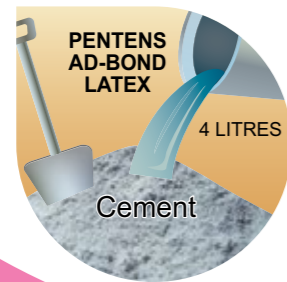
Environmentally friendly product

PENTENS AD-BOND LATEX

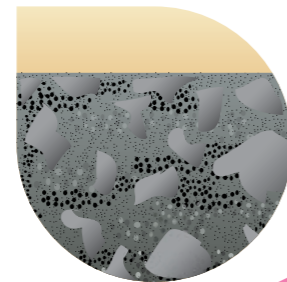
Latex Additives Waterproofing



Easy to use



Increase compressive



ADVANTAGES

- Easy to use, only mix with cement on the job site.
- Excellent adhesion and durability.
- Crack resistance.
- Good flexural strength.
- Good impact strength.
- Freeze-thaw resistance.
- Vapor permeable.
- Low alkalinity.
- Excellent water resistance.

Areas of application include:

- As a base coat for floor screeds
- As a flexible adhesive for tiling, glazing
- As a flexible patching mortars
- As a concrete repair mortars
- As a abrasion resistant linings

PENTENS AD-BOND LATEX is a one-component, copolymer of styrene, being modified from MMA and butadiene. When added to cement and mortar, it will permeate in to the gap between cement and its aggregate that will create finer texture in cement and mortar to further enhance waterproofing.

Method of Statement



1 Mix together 50 kg cement & 150 kg sand.



2 Add 15 litres clean water to mix container.



3 Add 4 litres Pentens AD-Bond Latex in cement sand.



4 Mix thoroughly.



5 Apply directly to construction surface by using cement knife.



6 Complete.

Technical & Physical Data

Form	Liquid
Colour	Milky white
Density	1.03-1.05
(CNS 6986, CNS 6988)	
Mixing Ratio : (by weight)	
AD-Bond Latex	1
Cement	1
Working Time (at 25°C)	40 minutes
Dry Time (at 25°C)	6 hours
Curing Time (at 25°C)	24 hours
Bond Strength (7 days)	
- on Concrete	14 kgf/cm ²
- on Polystyrene Board	3.0 kgf/cm ²

Shelf Life	1 year when unopened and undamaged
Storage Condition	Store in a dry, cool place
Packaging	4L /pail 20L /pail



Environmentally friendly product

PENTENS TA FLEX

M888

Bonding Agent & Adhesive Strength Additive



Packaging:
• 5L /pail
• 20L /pail

ADVANTAGES

- Easy to use, only mix with cement on the job site.
- Excellent adhesion and durability.
- Crack resistance.
- Good flexural strength.
- Good impact strength.
- Freeze-thaw resistance.
- Vapor permeable.
- Low alkalinity.
- Excellent water resistance.

Areas of application include:

- Mix with cement based adhesive for fixing ceramic tiles, marble, slate and natural stone onto concrete, cement render and rendered brickwork surfaces.
- Mix with neat cement and sand as a slurry bond coat to fix rendered or bed tiles over uneven concrete.
- For plastering works. Also aid in bonding prior to application of self-leveling compounds.
- As a primer, seals surface dust, improves water resistance & acts as bonding agent prior to fixing tiles.

PENTENS TA FLEX M888 is a cement modifier, consisting of latex polymer emulsion for enhancing the adhesion strength of mortar, tile adhesive cement, plastering cement, cement / sand screed, render repair mortar, grouting cement and etc.

Method of Statement



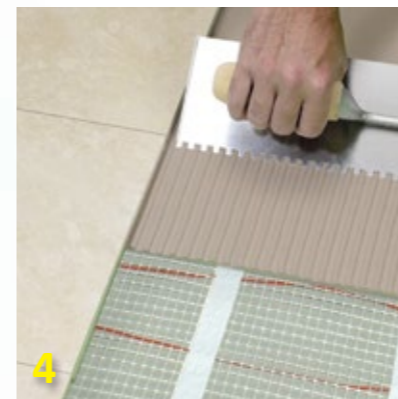
1 Add 6.5L TA FLEX M888 to mix.



2 Add 25kg tile adhesive to mixed.



3 Mix thoroughly.



4 Apply directly to construction surface by using cement knife.



5 Tiles completely apply on wall area.

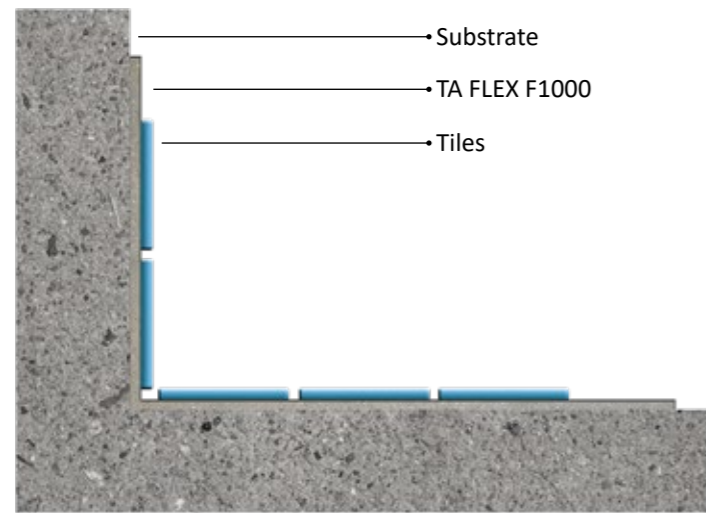


6 Tiles completely apply on floor area.

PENTENS TA FLEX

F1000

High Performance Mortar Adhesive Strength Additive



Packaging:
• 5KG /pail
• 20KG /pail



ADVANTAGES

- Easy to use, only mix with cement on the job site.
- Excellent adhesion and durability.
- Crack resistance.
- Good flexural strength.
- Good impact strength.
- Freeze-thaw resistance.
- Vapor permeable.
- Low alkalinity.
- Excellent water resistance.

Areas of application include:

- Mix with cement based adhesive for fixing ceramic tiles, pavers, marble, slate and natural stone onto concrete, cement render, rendered brickwork surfaces and existing tiles.
- Mix with neat cement and sand as a slurry bond coat to fix rendered or bed tiles over uneven concrete.

PENTENS TA FLEX F1000 is a cement modifier, is belonged to the copolymer for enhancing the adhesion strength of mortar, tile adhesive cement, plastering cement, cement / sand screed, render repair mortar, grouting cement and etc.

Method of Statement



1 Pour in 3.5L clean water into a pail.



2 Add 3kg TA FLEX F1000 to mix.



3 Add 25kg tile adhesive to mixed.



4 Mix thoroughly.



5 Apply directly to construction surface by using cement knife.

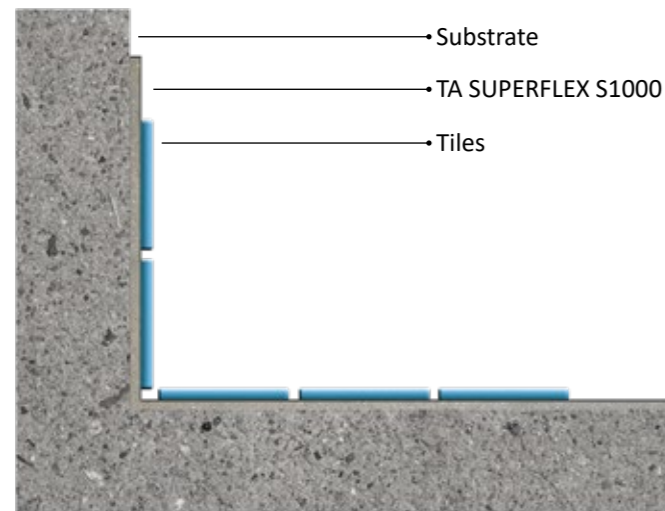


6 Complete.

PENTENS TA SUPERFLEX

S1000

Super High Performance Mortar
Adhesive Strength Additive



Packaging:
• 5KG / pail
• 20KG / pail



ADVANTAGES

- Easy to use, only mix with cement on the job site.
- Excellent adhesion and durability.
- Crack resistance.
- Good flexural strength.
- Good impact strength.
- Freeze-thaw resistance.
- Vapor permeable.
- Low alkalinity.
- Excellent water resistance.

Areas of application include:

- Mix with cement based adhesive for fixing ceramic tiles, pavers, marble, slate and natural stone onto concrete, cement render, rendered brickwork surfaces and existing tiles.
- Mix with neat cement and sand as a slurry bond coat to fix rendered or bed tiles over uneven concrete.

PENTENS TA SUPERFLEX S1000 is a cement modifier, consisting of Ethylene-Vinyl Acetate copolymer (EVA) emulsion for enhancing the adhesion strength of mortar, tile adhesive cement, plastering cement, cement/sand screed, render repair mortar, grouting cement and etc. TA SuperFlex S1000 and TA-Bond tile adhesive system can be used for affixing new tiles over old tiles.

Method of Statement



1 Pour in 4.5L clean water into a pail.



2 Add 2kg TA SUPERFLEX S1000 to mix.



3 Add 25kg tile adhesive to mixed.



4 Mix thoroughly.



5 Apply directly to construction surface by using cement knife.

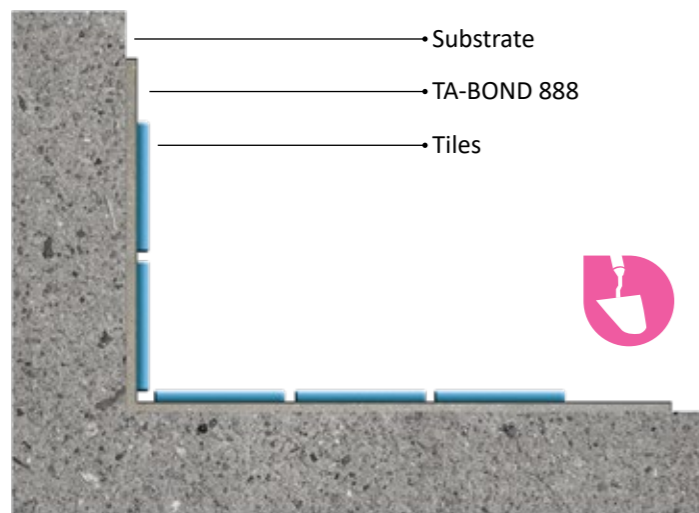


6 Complete.

PENTENS TA-BOND

888

Tile Adhesive Floor And Wall Thin-set Mortar



ADVANTAGES

- Good bonding strength.
- Easy installation / User friendly.
- Excellent water and impact resistance.
- Non-flammable.
- Non-toxic.

Suitable for bonding ceramic tiles, homogeneous tiles, mosaics etc. on:

- Both wall and floor
- Internal and external areas
- Conventional cement-sand screeds and renders

PENTENS TA-BOND 888 is water resistant cement-based, thin or medium bed adhesive, suitable for fixing ceramic tiles, etc. to wall and floor, dry or wet interior and exterior areas with very good adhesion strength.

Method of Statement



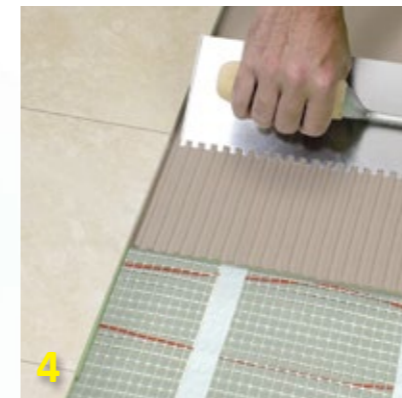
1 Add 6 - 6.5 litres clean water & TA-BOND 888, mix thoroughly.



2 Apply the adhesive layer on the wall.



3 Laying the tiles on the wall or floor area.



4 Apply directly to construction surface by using cement knife.



5 Tiles completely apply on wall area.



6 Tiles completely apply on floor area.

Technical & Physical Data

Product Type	Powder
Pot Life	Approx. 2 hours
Open Time	Approx. 15 - 20 mins
Adjustability Time	Up to 30 minutes
Pull-out Strength (28 Days) Immersed in water (ISO 13007-1)	1.23N/mm ²
Pull-out Strength (28 Days) Immersed in air (ISO 13007-1)	1.46N/mm ²
Cure Time	24 hours
Colour	Cement Grey

Shelf Life	12 months when unopened
Storage Condition	Store in a dry, cool place
Application Temperature Range (0°C)	5 to 45
Service Temperature Range (0°C)	5 to 50
Packaging	25kg /bag



Environmentally friendly product

PU-101 & PU-300

High-Pressure PU Grouting Injection Systems



High-Pressure Injection Pump

Flow Output : 1.0l/min
 Maximum Pressure : 0 ~ 6000 Psi
 Maximum Hose Length : 7M
 Offer Copco Drill Electronic : 560 watt
 Circult Required : 220 vac (Malaysia) / 110 vac
 Weight : 4.5kg



Injection Packer
 10cm length / 13mm diameter
 8cm length / 10mm diameter



Packaging:
 · 4KG /pail
 · 20KG /pail

Packaging:
 · 4KG /pail
 · 20KG /pail

Technical & Physical Data

Pentens PU-101

Form	Single part liquid
Colour	Transparent
Solubility in Water	Hydrophilic
Solids (ASTM D 1010)	100%
Density, g/ml (ASTM D 3800-79)	1.12
Viscosity, cps (ASTM D 2196)	160-200
Max. Expansion	30 times
Induction Time, 20°C/68°F	10 Sec
Gel. Time, 20°C/68°F	30 Sec
Elongation at Break (%) (ASTM D 412-98)	>30
Strength (Sand Filled)	2000 Psi
Appearance	White polyurethane foam
Corrosiveness	Non-corrosive
Chemical Resistance	Resistant to most organic solvent, mild acids, alkali and other chemicals.
Shelf Life	1 year when unopened and undamaged
Storage Condition	Store in a dry, cool place
Packaging	4kg /pail, 20kg /pail

Technical & Physical Data

Pentens PU-300

Form	Single part liquid
Colour	Dark brown
Solubility in Water	Hydrophobic
Max. Expansion, %	3000
Induction Time, 20°C/68°F	30 Sec
Gel. Time, 20°C/68°F	40 Sec
Elongation at Break (%) (ASTM D 412-98)	>20
Unconfined Compressive Strength (Sand Filled)	2000 Psi
Corrosiveness	Non-corrosive
Chemical Resistance	Resistant to most organic solvent, mild acids, alkalis, etc.
Shelf Life	1 year when unopened and undamaged
Storage Condition	Store in a dry, cool place
Packaging	4kg /pail, 20kg /pail

PENTENS PU-101 & PU-300 are one-part hydrophilic polyurethane grouting material, specially designed for construction joints and cold joints. All of these unwanted openings in concrete structures may cause serious problems in water leakage.

Most of these problems can be solved by utilising PENTENS Pressure Injection Systems. It has been proven to stop water leakage permanently. Slabs on grade, construction or control joints, parking garages, manholes, tanks, dams and many other structures can now be fixed permanently.

Skill Technical:

- Easy for repair and maintain with our special design spare part.
- Simple repair system and reliable product to reduce more cost.
- Main body 4.5kg easy for hand carry.

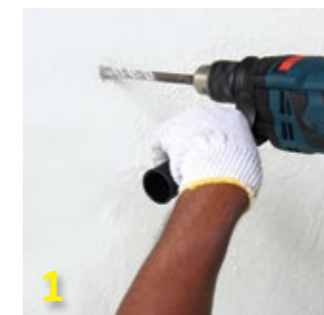
ADVANTAGES

- Underwater injection approved.
- Good elastic strength, tolerant of movement inert after curing, constant volume, no shrinkage.
- Foam increase in volume to fill cavities and voids.
- Excellent bond to wet surfaces.
- Negative side application possible.
- Deep penetration into very small cracks.
- Does not create new cracks.
- Non-toxic.

Areas of application include:

- Retaining walls
- Bathrooms
- Floor slabs
- Water tanks
- Terraces and balconies
- Patios
- RC gutters and planter boxes
- Swimming pools
- Suspended floors
- Basements and fountains

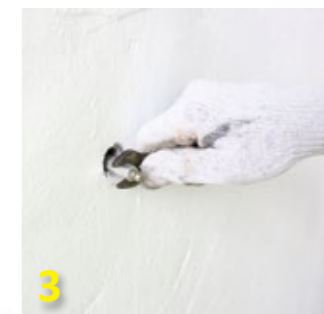
Method of Statement



1 Drill into the RC slab or wall.



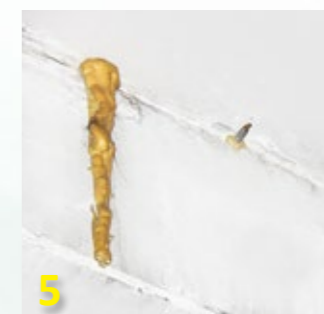
2 Insert the packers into the RC slab or wall.



3 Fix & tight the packers.



4 Fix the grouting hose into the packers and start grouting.



5 The grout will start to solidify.



6 Remove the packer and cover with paint.



PENTENS WATERPLUG

T-800

Rapid Setting Mortar for Plugging Leaks



ADVANTAGES

- Easy to use.
- Non-shrink.
- Non-toxic.
- Rapid strength development.
- Extended working time.
- Good adhesive properties.
- Excellent bond strength.
- Iron and chloride free.
- Low permeability and dense.

Areas of application include:

- Stopping leaks
- Patching mortar and concrete
- Crack and joint on RC roof, wall & ceiling

PENTENS WATERPLUG T-800 is a ready-to-use rich blend of special cements and chemical in single-part dry powder form that needs only the addition of clean water to produce an ultra fast setting mortar.

Method of Statement



1 Open the cover of WATERPLUG T-800.



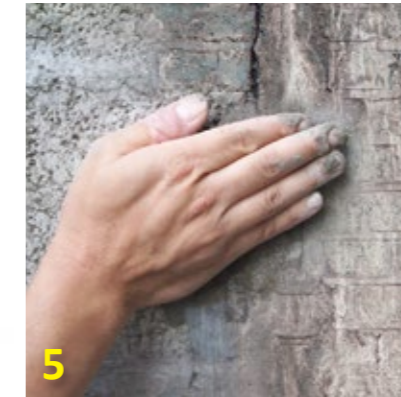
2 Add 1 litre water : 4kg powder to mix container.



3 Mix thoroughly and make it to round shape.



4 Put onto leaking area.



5 Put onto and press about few minute.



6 Complete.

Technical & Physical Data

Form	Premixed Powder	Hardening Time	20 seconds
Colour	Grey	Mixing Ratio (by weight)	
Compressive Strength (N/mm ²) (ASTM C942-81)		Powder	4
1 Hour	8	Water	1
1 Day	>12	Shelf Life	12 months in unopened bags
7 Days	>25	Storage	Stored in a dry, cool place
28 Days	>35	Packaging	1kg /pail
Water Absorption(%) (ASTM C 413)	<0.5		4.5kg /pail
PH Value	± 11		20kg /pail
Mixed Density (kg/ltr)	± 2		

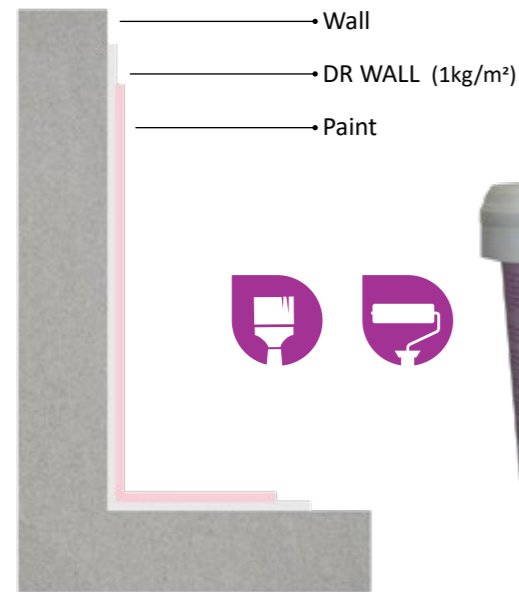


Environmentally friendly product

PENTENS

DR. WALL

Anti-Fungal Compound Coating



Packaging:
• 1KG /pail
• 4.5KG /pail

ADVANTAGES

- Easy to apply, can be directly coated on the damp surface.
- High water resistance.
- Suitable to apply on both sides concrete structures.
- Non-toxic.

Areas of application include:

- Concrete or cement substrate

PENTENS DR. WALL is a rich combination of organic and inorganic chemical composition plus specific modification of quartz sand, cement and concrete. A special formula design for the construction surface layer (paint layer).

Method of Statement



1 Remove debris from the structure completely.



2 Open the cover of Dr. Wall.



3 Add 1 litre water: 3kg powder to mix container.



4 Mix thoroughly.



5 Apply directly to construction surface by using brush or roller.



6 After that apply to soil painting.



Environmentally friendly product

PENTENS

T-801

Polymer Patching Repair Mortar



ADVANTAGES

- Fast and easy to apply to clean substrates in layers up to 20mm thick.
- One component system requiring only addition of clean water.
- Compatible with the thermal expansion properties of concrete.
- Chloride free.
- Non-corrosive to reinforcing steel.
- Non-toxic, suitable for potable water.
- Contains fibers to prevent micro crack.
- Non-shrink.
- Excellent freeze / thaw resistance.
- Good resistance to long term water immersion.

Areas of application include:

- Fast repairs to horizontal or vertical concrete, mortar surfaces above and below ground level.
- Filling / repair mortar for voids, honeycombed areas, etc.
- Repair of spalled concrete caused by reinforcement corrosion.
- Repairs with improve resistance to oil, sewage, chemicals, etc.

PENTENS T-801 is a one component, thixotropic, polymer-modified, cementitious mortar which contains silica fume. Cured product produces waterproof and high strength mortar that enhances polymeric properties. PENTENS T-801 exhibits high bonding strength with greatly reduced water and carbon dioxide permeability and improved resistance against oil and chemicals.

Method of Statement



1 Add around 3.5 litres clean water.



2 Add powder to mix container.



3 Mix thoroughly.



4 Apply directly to construction surface.



5 Apply directly to construction surface.



6 Applying.

Technical & Physical Data

Form	Premixed powder
Colour	Cement grey
Density	~ 2.0kg per liter (freshly mixed mortar)
Mixing Ratio	3.4 - 3.5 liters of clean water per 25kg bag to suit desired consistency
Consumption	~ 71 bags (25kg) per m ³
Application Thickness	Minimum: 3mm Maximum: 20mm
Application Temperature	5°C to 50°C
Compressive Strength (25°C)	1 day: 15.0 N/mm ² 28 days: 50.0 N/mm ²
Bond On Concrete	>1.5 N/mm ² (with bonding bridge)
Water Absorption at 30mm	<3%
Modulus of Elasticity	<20,000 N/mm ²
Pot Life	~ 30 minutes at 20°C
Shelf Life	12 months when unopened
Storage	Stored in a dry, cool place
Packaging	25kg /bag



Environmentally friendly product

PENTENS GROUT T-805

Standard Non-Shrink Grout



ADVANTAGES

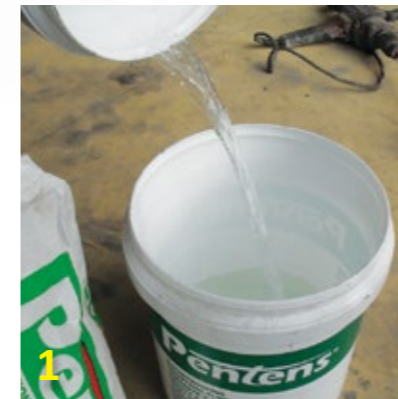
- Shrinkage-compensated.
- Good pumping properties.
- Easy to apply.
- Non-toxic.
- Non-corrosive.
- Flowable consistency.
- Iron and chloride free.
- Rapid strength development.

Areas of application include:

- Grouting works for bridge bearings, anchor bolts, machine foundations, etc.
- Concrete repairs (pre-packed grouting)
- Filling of gaps, cavities, recesses, etc.

PENTENS GROUT T-805 is a ready-to-use rich blend of cement and shrinkage-compensating agents requiring only the addition of water to produce a freeflowing, high strength grout. PENTENS GROUT T-805 is an environmentally friendly and low VOC material.

Method of Statement



1 Add 4 litres clean water.



2 Add powder to mix container.



3 Mix thoroughly.



4 Apply directly to construction surface.



5 Remove the pile wood.



6 Finished.

Technical & Physical Data

Form	Premixed Powder		Expansion (ASTM C 827)	0.1 ~ 2%
Colour	Grey		Expansion Period (mins)	0 ~ 150
Aggregate Size	2.0mm maximum		Mixing Ratio Guide -	
Compressive Strength (N/mm ²) (ASTM C942-81)			Consistency Water (liters) (per 25kg Grout)	
Water Content (Lts)	3.8	4.1	Flowable	4.5 - 5.0
1 day	>39	>30	Pourable	3.2 - 3.8
3 days	>51	>50	Application Criteria (Pure grout)	Max thickness per pour: 75mm Min thickness per pour: 10mm
7 days	>59	>55	Shelf Life / Storage	12 months in unopened original bag and when stored in a dry, cool place.
28 days	>70	>65	Packaging	25kg / bag
Density	2.3 (gm/cm ³)			
Water Absorption (%) (ASTM C 413)	<1			
Tensile Strength (N/mm ²) (ASTM C 190)	>4.0			
Initial Set Time	± 45 min			



Environmentally friendly product

PENTENS Q-SET

Plasticising Accelerator

PENTENS Q-SET is a new generation, dual action liquid, high range water reducer and hardening accelerator for promoting a high early strength without negatively influencing final strengths. PENTENS Q-SET is chloride-free and is compatible with all types of Portland cement, including Sulphate Resistant Cement (SRC).

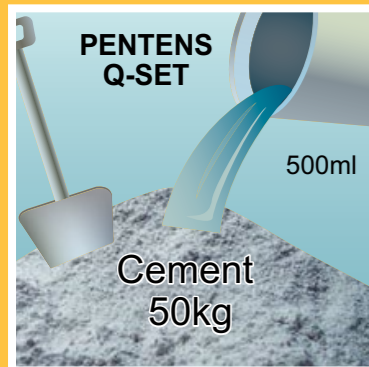


ADVANTAGES

- Increase early tensile strength
- Reduces water to cement ratio
- Improve workability
- Ready to use in liquid form
- Non-shrink
- Easy to use (DIY)

Method of Statement

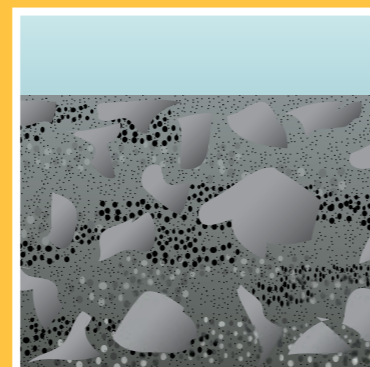
Easy to use



Improves Workability



Increases Compressive



Technical & Physical Data

Appearance	Transparent	
Compressive Strength (N/mm ²)	HRWR Concrete	Pentens Q-SET
10 hours	5.20	15.00
12 hours	9.00	18.50
14 hours	13.20	22.20
24 hours	22.40	29.00
Shelf Life	1 year from the date of production when stored unopened	
Storage Condition	Store in a dry, cool place	
Packaging	4kg / pail	20kg / pail



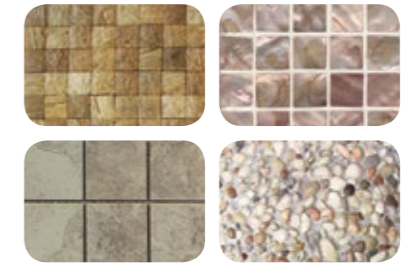
Environmentally friendly product

PENTENS SLATE-SEAL

820

Transparent Protecting Acrylic Coating

PENTENS SLATE-SEAL 820 is a specially formulated colourless protective coating with added Ultra Violet (UV) additive for treatment of interior and exterior concrete surfaces against scratching.



Areas of application include:

- Slate
- Quarry
- Paver tile
- Stamped concrete
- Concrete tile



Method of Statement

Open the cover of SLATE-SEAL 820.



Use brush or roller.



Apply directly to construction surface by using brush or roller.



Technical & Physical Data

Form	Liquid
Colour	Transparent
Finish	Gloss
Density (CNS6986, CNS6988)	0.9kg / litre
Thickness	50 microns DFT
Theoretical Coverage	7m ² / litre
Drying Time:	
Touch Dry	45 minutes
Topcoat	2 hours

Chemical Resistance	No changes on the surface of the sample
(10% HCOOH, 60°C, 24hrs)	
Shelf Life	1 year when unopened & undamaged
Storage Condition	Store in a dry cool place
Packaging	1 litre, 5 litres and 18 litres /pail



Environmentally friendly product 51

PENTENS DRAIN CLOG-FREE RENOVATOR

Concentrate

PENTENS DRAIN CLOG-FREE RENOVATOR is specially formulated to dislodge layers of hair, soap scum, grease and organic slime in drains and pipes accumulated over a period of time by liquifying them and restoring free flow to choked drains. It's highly effective for removing clogs and maintaining free flow in sink traps and drains of commercial kitchens, industrial plants, hotels, hospital, schools and food processing plants.

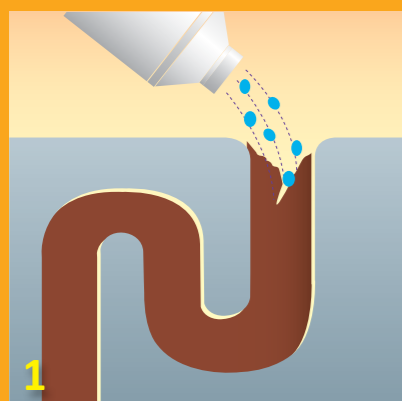


ADVANTAGES

- Clear blockages in drains caused by hair, grease, soap, paper and other organic materials.
- Suitable for toilets and wash basin.
- Penetrates and dissolves grease and organic matter.
- Safe on plastic, rubber and other parts of the drain system.

Available at 500ml & 1 litre

Method of Statement



1 Pour solution slowly and directly onto areas to be treated.



2 Allow treating for 10- 15 min, then flush down with water.



3 Complete.

PENTENS E-GROUT

Epoxy Putty Adhesive

PENTENS E-GROUT is a 2-component pre-packed epoxy mortar based on epoxy resin for the bonding and repair of cracked concrete, brickwork, masonry or for wall and slab bedding bearing pads.

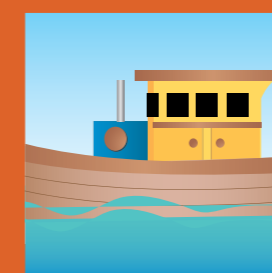
ADVANTAGES

- Easy application.
- High strength.
- Superb adhesive strength.
- Good penetration.
- Short waiting times.
- Non-toxic.



Available at 300gm & 700gm

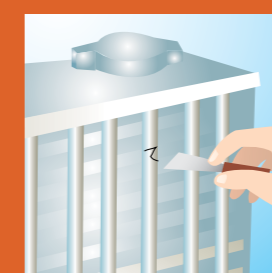
Specially formulated for:



Boat building



Wood furniture repair



Construction industries

Technical & Physical Data

Form	Creamy paste
Color (mixed)	Light grey
Density	1.2kg
Flexural Strength (after 7 days)	20N/mm ²
Compressive Strength (after 7 days)	60N/mm ²
Chemical Resistance (10% HCOOH, 60°C, 24hrs)	No changes on the surface of the sample
Pot Life (at 30°C)	20 minutes
Shelf Life	1 year in original unopened packaging
Storage Condition	Store in a dry, cool place
Packaging	
• Part : A	700g /pail
• Part : B	300g /pail

PENTENS PUTTYFILLA

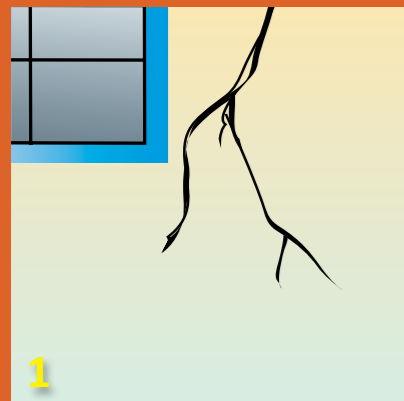
Cellulose Filler

PENTENS PUTTYFILLA is a ready-to-use filler for exterior and interior. It is suitable for filling cracks and levelling uneven surfaces. It is fast drying and easy to apply.

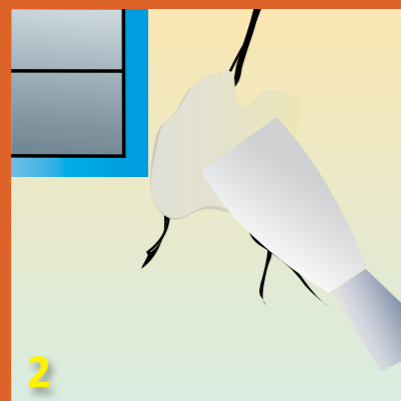


Available at 0.5kg,
1.5kg, 5kg & 27kg

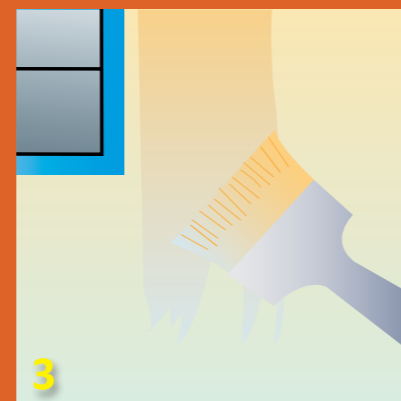
Method of Statement



1 Clean the surface.



2 Use a scraper to applied.



3 Sanding & painting.

PENTENS WOODFILLA

Ready-mixed Filler for Interior Woodwork and Furniture

PENTENS WOODFILLA is a ready mixed water based fast drying interior wood filler.

ADVANTAGES

- Flexible.
- Easy to use.
- Fast drying.
- Paintable.
- Look & acts like real wood.



Technical & Physical Data

Form	Thick Paste
Color	Natural
Flash point	Not applicable
Solid Content	75% -78%
Density at 25°C	1.16 kg/litre
Skimming time :	16 minutes at 24°C and 50% R.H.
Curing Time	24 - 72 hours depending on temperature and porosity of surface
Open Time	Max. 45 minutes at '23°C and 50% R.H.
Water Absorption	Does absorb water to a certain extent which lowers the mechanical properties. Not to be used for constructions that will be exposed to severe water immersion.

Consistency	Thixotropic
Shelf Life & Storage Condition	Have a shelf lift of 1 year at dry and cool place
Application Temperature	-22°C ~ +40°C
Service Temperature Range	-30°C ~ +60°C
Freeze/Thraw Stability	5 Cycles
Coverage	15 metres of 6mm bead
Packaging	0.5kg /pail 1.5kg /pail 5kg /pail



Environmentally friendly product

PENTENS SEAL

Self-adhesive Rubberized Asphalt

PENTENS SEAL is a flexible polymer-modified bituminous strip with a matt grey vinyl-coated aluminum foil facing. It is a flexible waterproofing seal in all conditions of exposure.

PENTENS SEAL should not be used on unprotected traffic surfaces as they may be susceptible to damage, except for roof areas that are subject to occasional maintenance access only.

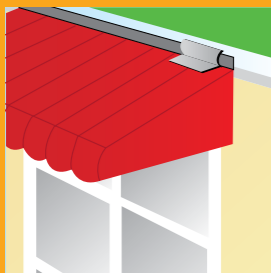


Available at:
 50 mm x 1.35 mm x 10 M / 24 Rolls per Carton
 75 mm x 1.35 mm x 10 M / 16 Rolls per Carton
 100 mm x 1.35 mm x 10 M / 12 Rolls per Carton

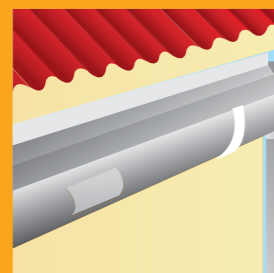
Specially formulated for:



Roof repair



Awning leaks repair



Gutters or tiles repair

Technical & Physical Data

Form	Plastic composite section
Flash Point	Over 65°C
Solid Content	100%
Colour	Silver, black underside
Application Temperature	5°C to 50°C
Toxicity	Non-toxic
Staining	PENTENS SEAL will not stain porous materials outside its area of application but care is necessary during the application of the bitumen-based surface conditioner
UV Resistance	Good resistance against UV light and other weathering agents
Storage	Store in a dry, cool place
Shelf Life	12 months in original containers
Packaging	50mm x 10 meter /roll 75mm x 10 meter /roll 100mm x 10 meter /roll

PENTENS FLEX

609

Single Component Polyurethane Joint Sealant

PENTENS FLEX 609 is a single component polyurethane sealant, cured to form a soft elastomeric weatherproof seal and is specifically designed for waterproofing and sealing of external and internal expansion and construction joints in buildings and engineering structures.



ADVANTAGES

- Single component, easy to apply.
- Good bonding on various substrates.
- Soft elastic with 25% moving capacity.
- Excellent resistance to weather conditions.
- High durability.
- Waterproofing.
- Will not crack.
- Non-sag.
- Non staining.

Technical & Physical Data

Colours	Black, white, grey (other colour made to order)
Consistency	Paste-like
Stability	Stable, non-flowing on vertical surfaces
Density	Approx. 1.4g/ml
Application Temperature	From 5°C to 35°C
Initial Cure	After approx. 3 hours at 23°C / 50% RH
Full Cure	After approx. 3 - 7 days at 23°C / 50% RH
Condition After Hardening	Soft, elastic
E-modulus (100% expansion)	Approx. 0.20N/mm ²
Shore A Hardness (ASTM D2240)	>20
Tensile Stress at 100% Elongation (N/mm ²) (ASTM D412)	0.46
Elongation at Break (%) (ASTM D412)	>1,000
Maximum Deformation Capacity	25%
Temperature Resistance	From -30°C to 80°C
Chemical Resistance	Resistant to water, seawater, diluted acids and alkalis. Restricted resistance against mineral oils, fat and petrol.
Storage	1 year when store in cool, dry and tightly sealed package.
Packaging	600ml vacuum-packed sausages (20 sausages per box)

PENTENS AC-1 AWNING CAULK

Weather Proof Outstanding Durability Bond Most Material

PENTENS AC-1 AWNING CAULK is a one-component non-skinning mastic sealant that is specifically formulated as a bedding or gasket-style sealant. It remains in a soft plastic state providing a dust-proof, weatherproof, soft, pliable and flexible seal for a variety of construction and manufacturing materials.



ADVANTAGES

- Non skinning.
- Permanently pliable, soft, flexible.
- Durable.
- Excellent UV light resistance in glazing applications.
- Tenacious adhesion to nearly all surfaces.
- Will not crack.
- Non-sag.
- Good service temperature range (-35°C to 65°C).
- Indefinite aging characteristics.
- Paintable.
- Outstanding durability.



Technical & Physical Data

Form	Non-sagging paste
Colour	White, grey
Tack-Free Time	24 hours
Curing System	Oxidizing
Density	1.50 - 1.60 g/mL
Curing Time	24 - 72 hours depending on temperature and porosity of surface
Max. Joint Movement	±3%
Shrinkage	5%
Application Temperature	4°C ~ 50°C
Service Temperature	-5°C ~ 60°C
Shelf Life	24 months
Storage	Store in a dry, cool place
Packaging	400g /cartridge 24 cartridges /carton

PENTENS PT-606 SUPER NAILS

Construction Adhesive Sealant

PENTENS PT-606 SUPER NAILS is a one-component, high performance, paste-like construction adhesive sealant formulated to bond a variety of common construction materials. It has strong initial grab, superior adhesion and will not slump on vertical surfaces.



ADVANTAGES

- Super adhesive.
- Strong initial grab.
- Easy to apply, fast setting.
- Excellent adhesion to most building materials.



Technical & Physical Data

Form	Thick Paste
Colour	Brown
Flash Point	Not applicable
Solid Content	75% - 78%
Density at 25°C	1.16 kg/litre
Skinning Time	16 minutes at 24°C and 50% R.H.
Curing Time	24 - 72 hours depending on temperature and porosity of surface
Open Time	Max. 45 minutes at 23°C and 50% R.H.
Water Absorption	Absorb water to a certain extent which lowers the mechanical properties. Not to be used for constructions that is exposed to severe water immersion.

Consistency	Thixotropic
Shelf Life & Storage Condition	1 year at dry, cool place.
Application Temperature	-22°C to 40°C
Service Temperature Range	-30°C to 60°C
Freeze/Thaw Stability	5 Cycles
Coverage	15 metres of 6mm bead
Packaging	300ml /cartridge 24 cartridges /carton



Environmentally friendly product

PENTENS 603

Acetic Cure Silicone Sealant

PENTENS 603 Acetic Cure Silicone Sealant is a general purpose acetoxy silicone sealant formulated for general purpose glazing and sealing applications where long term reliability is required. It will bond to form a durable, flexible, waterproof seal on many common wet area building materials.



Available at:
300ml /cartridge
25 cartridges /carton

Specially formulated for:



Bathroom



Glass material



Window glass & aluminium

Technical & Physical Data

Form	Paste
Colour	Transparent, black, white and grey
Hardness (Shore A) (ASTM C661)	>10
Elongation (ASTM D412)	>340%
Tensile Strength (ASTM D412)	>0.5N/mm ²
Cure Time	1 day
Tack-free Time (at 25°C & 50% R.H.)	5~15 minutes
Application Temperature	-20°C to 62°C
Service Temperature	> 150°C
Shelf Life	12 months
Storage	30°C stored in original unopened containers
Packaging	300ml /cartridge 25 cartridges /carton

PENTENS 605

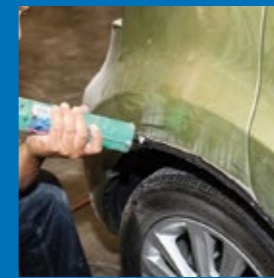
Neutral Cure Silicone Sealant

PENTENS 605 Neutral Cure Silicone Sealant is an environmentally friendly and low VOC material which is widely used for glazing, sealing and weatherproofing in all buildings, modular houses, freight containers, roofing and cladding joints. Excellent adhesion to glass, aluminum, ceramics, painted surface, most metals and most plastics. It is a single-component elastomeric sealant that is permanently elastic upon curing.

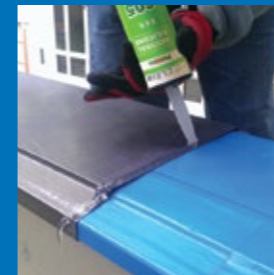


Available at:
300ml /cartridge
25 cartridges /carton

Specially formulated for:



Industries



Lightweight building components



Metal

Technical & Physical Data

Form	Paste
Colour	Transparent, black, white and grey
Hardness (Shore A) (ASTM C661)	20 - 30
Elongation (ASTM D412)	>290%
Tensile Strength (ASTM D412)	>0.5N/mm ²
Cure Time	1 day
Tack-free Time (at 25°C & 50% R.H.)	10 ~ 30 minutes
Application Temperature	-20°C to 50°C
Service Temperature	> 150°C
Shelf Life	12 months
Storage	30°C stored in original unopened containers
Packaging	300ml /cartridge 25 cartridges /carton

PENTENS 607

Acrylic Cure Silicone Sealant

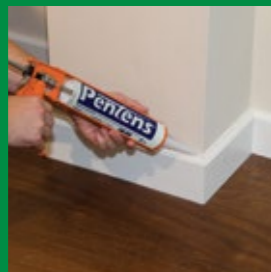
PENTENS 607 is a white acrylic based gap filler in paste form for application from a cartridge. It is very quick and easy to apply and can be finished or smoothed off with a spatula or a damp sponge. It sets quickly on application and can be applied over paint or wallpaper. The inherent flexibility of PENTENS 607 will accommodate the small structural movements between finishes which would otherwise result in recurrent unsightly cracks.

Typical examples of this are gaps between skirting, window and door frames, fitted furniture units and ceiling cornices and adjacent plasterwork. Where replacement windows are installed, PENTENS 607 can be used to make good between new frames and interior plasterwork. PENTENS 607 can be used to meet a variety of sealing needs. It cures to silicone rubber and adheres to glass, wood, metal, porcelain, ceramic, painted surfaces and rubber.



Available at:
450g /cartridge
25 cartridges /carton

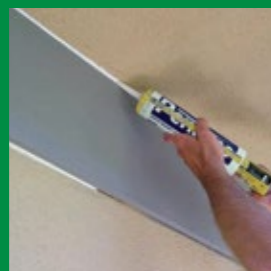
Specially formulated for:



House building



Industry



Home repair

Technical & Physical Data

Form	Paste
Colour	White
Flash Point	Not applicable
Solid Content	Min 80%
Density at 25°C	1.72 kg/litre
Skinning Time	16 minutes at 24°C and 50% R.H.
Cure rate 20°C @65% RH	2 weeks for total cure of 10mm bead
Hardness (Shore A)	50-55 Shore
Consistency	Thixotropic
Shelf Life & Storage Condition	1 year at dry, cool place
Application Temperature Range	-22°C to 77°C
Packaging	450g /cartridge 25 cartridges /carton

PROJECT REFERENCES



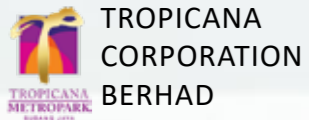
Environmentally friendly product

PROJECT REFERENCES

Tropicana Metropark @ Paloma Subang Jaya, Selangor



Developer



TROPICANA
CORPORATION
BERHAD

Main-Con

SETIAKON CONSTRUCTION
SDN BHD

Architect

RSP ARCHITECT
SDN BHD

Iskandar Residences @ Medini Nusajaya, Johor



Developer

DISTINCTIVE GROUP

Main-Con

SANTARLI SDN BHD

Architect

BEP AKITEK
SDN BHD

Eco Sanctuary Kota Kemuning, Shah Alam



Developer



ECO SANCTUARY
SDN BHD

Main-Con

KERJAYA PROSPEK
SDN BHD

Architect

ONG & ONG 360 CONSULTANCY
SDN BHD



Twin Galaxy Residences Johor Bahru, Johor

Developer



GOLDEN ORIENTAL
REALTY SDN BHD

Main-Con

LAL ENGINEERING SDN BHD

Architect

JYP ARCHITECT SDN BHD

D'Summit Residences
Kempas Utama, Johor



Developer



IOI PROPERTIES

IOI PROPERTIES BERHAD

Main-Con

YICAI CONSTRUCTION SDN BHD

Architect

RDC ARKITEK SDN BHD

NTT MSC
Cyberjaya



Developer



NTT MSC SDN BHD

Main-Con

NAKANO CONSTRUCTION
SDN BHD

Architect

ARKITEK IPPM
SDN BHD

Suasana Iskandar
JB Central, Johor



Developer



UM LAND BERHAD

Main-Con

UM LAND BUILDER
SDN BHD

Architect

RSP ARCHITECTS PLANNERS &
ENGINEERING (VIETNAM) CO, LTD

You City
Cheras



Developer



PJ DEVELOPMENT
GROUP

Main-Con

PJD CONSTRUCTION
SDN BHD

Architect

AKRIPRAKTIS CHARTERED
ARCHITECTS

Kiara 9
Mont Kiara



Developer	Main-Con	Architect
MITRAJAYA HOLDINGS SDN BHD	MITRAJAYA HOME SDN BHD	SA ARCHITECTS SDN BHD

Tropicana City Mall
Petaling Jaya



Developer	Main-Con	Architect
DIJAYA CORPORATION BERHAD	PJD CONSTRUCTION SDN BHD	DP ARCHITECTS SDN BHD

Hartamas Regency II
Sri Hartamas



Developer	Main-Con	Architect
PJ DEVELOPMENT GROUP	PJD CONSTRUCTION SDN BHD	ATELIER ADT AKITEK SDN BHD

One Mont Kiara
Mont Kiara



Developer	Main-Con	Architect
IREKA CORPORATION BERHAD	IREKA CONSTRUCTION & ENGINEERING SDN BHD	VERITAS ARCHITECTS


MAS Cargo (Hangar 6)
Sepang



Main-Con	Architect
ZELAN CONSTRUCTION SDN BHD	MINCONSULT SDN BHD

Suruhanjaya Tenaga
Putrajaya



Main-Con	Architect
 PUTRA PERDANA CONSTRUCTION SDN BHD	NR ARCHITECTS SDN BHD

SME 2
Cybercity



Main-Con	Architect
PEMBINAAN IKHASASI-MERAK SDN BHD	LA ARCHITECTS SDN BHD

Hewlett Packard
Cyberjaya



Main-Con	Architect
PEMBINAAN IKHASASI-MERAK SDN BHD	NEOFORMATION ARCHITECTS SDN BHD

Institut Jantung Negara
Jalan Tun Razak



Main-Con



UEM CONSTRUCTION
SDN BHD

Architect

RSP ARCHITECTS
SDN BHD

Setia City Mall
Setia Alam



Developer



SP SETIA BHD GROUP

Main-Con

SETIA PRECAST
SDN BHD

Architect

ARCHICENTRE
SDN BHD



Wisma PJD
Jalan Pahang

Developer



PJ DEVELOPMENT
GROUP

Main-Con

PJD CONSTRUCTION SDN BHD

Architect

RSP ARCHITECT SDN BHD

Casa Tropicana
Cyberjaya



Developer



DIJAYA CORPORATION
BHD

Main-Con

PJD CONSTRUCTION
SDN BHD

Architect

BARISAN ARCHITECTS
SDN BHD

SENI MONT KIARA
MONT KIARA



Developer
 IREKA CORPORATION BERHAD

Main-Con
 IREKA CONSTRUCTION & ENGINEERING SDN BHD

Architect
 BEP AKITEK SDN BHD



Desa Impian Residences
Puchong

Developer
 MITRAJAYA HOLDINGS SDN BHD

Main-Con
 MITRAJAYA HOME SDN BHD

Architect
 SA ARCHITECTS SDN BHD

Desa Idaman Residences
Puchong



Developer
 MITRAJAYA HOLDINGS SDN BHD

Main-Con
 MITRAJAYA HOME SDN BHD

Architect
 SA ARCHITECTS SDN BHD

Endah Promenade
Sri Petaling

Developer
 PJ DEVELOPMENT GROUP

Main-Con
 PJD CONSTRUCTION SDN BHD

Architect
 ATELIER ADT AKITEK SDN BHD



CX 5
Cyberjaya



Developer



Main-Con

NAKANO CONSTRUCTION
SDN BHD

Architect

ASIMA ARCHITECTS
SDN BHD

Shaftsbury Square
Cyberjaya



Developer

SHAFTSBURY CAPITAL
SDN BHD

Main-Con

PEMBINAAN IKHASAS-MERAK
SDN BHD

Architect

L A ARCHITECT

CX 2
Cyberjaya



Developer



Main-Con

NAKANO CONSTRUCTION
SDN BHD

Architect

ASIMA ARCHITECTS
SDN BHD

Covillea
Bukit Jalil



Developer



Main-Con

PEMBINAAN PINTAR RAYA
SDN BHD

Architect

A&A ARCHITECTS
SDN BHD

The Capers
Sentul East



Developer



YTL LAND & DEVELOPMENT BERHAD

Main-Con

SYARIKAT PEMBINAAN YEOH TIONG LAY SDN BHD

Architect

RT+Q ARCHITECTS PTE LTD

Shorefront
Penang



Developer

PDC HERITAGE HOTEL SDN BHD

Main-Con

SYARIKAT PEMBINAAN YEOH TIONG LAY SDN BHD

Architect

SM OOI ARCHITECT

Setia Triangle
Penang



Developer

Setia SP SETIA BERHAD
SP SETIA BHD GROUP

Main-Con

MENTARI BERSERI SDN BHD

Architect

SA LEE ARCHITECT

Subang Andaman
Batu Tiga



Developer

 PJ DEVELOPMENT GROUP
PJ DEVELOPMENT GROUP

Main-Con

PJD CONSTRUCTION SDN BHD

Architect

ARCHICENTER SDN BHD



Ciputra World Residential Tower
Jakarta, Indonesia



Buddha Tzu Chi
Indonesia



Ciputra World Jakarta 2
Jakarta, Indonesia



District 8
Indonesia

Apartemen Four Winds
Indonesia



The St. Moritz Tower
Jakarta, Indonesia



Mall of Indonesia
Indonesia

Hotel POP Harris - Solo
Indonesia



LEGEND

■ Head Office
 ■ Subsidiary
 ■ Distribution Partner
 ■ Manufacturing Plant


Headquarters

8F, No.2, Lane 348, Sec.2, Jhongshan Rd., Jhonghe City, Taipei County 23557, Taiwan.
T +886 2 2240 0220 **F** +886 2 2242 6536

Ufon Nano-Chemical Corp.

No.36, Lane 105, Chengfu Rd., Sansia Township, Taipei County 23743, Taiwan.
T +886 2 2668 2003 **F** +886 2 2668 1546

Pentens Taipei

12-7, Lane 230, Sec.1, Ankang Rd., Sindian City, Taipei County 23153, Taiwan.
T +886 2 2211 2267 **F** +886 2 2211 2367

Pentens Hsinchu

No.162, Sec.6, Jhonghua Rd., Siangshan District, Hsinchu City 30095, Taiwan.
T +886 3 518 1325 **F** +886 3 518 1160

Pentens Taichung

No.109-a 12, Yonghe Rd., Daya Township, Taichung County 42877, Taiwan.
T +886 4 2567 8805 **F** +886 4 2567 8097

Pentens Kaohsiung

No.81, Ln.17, Gongye 2rd Rd., Renwu Dist., Kaohsiung City 81469, Taiwan.
T +886 7 372 9910 **F** +886 7 372 9780


Pentens Shanghai

Room 301, Building 35, Bailu North Rd. Quarter, Kunshan City, Jiangsu, China.
T +86 512 5718 0678 **F** +86 512 5718 0675

Pentens Jiangxi (China)

669 New City In The Valley of Red Red Valley Beach, Avenue Purui Electronic Garden Area Of Building, Room 1002, Unit 2
T +86 791 8855 8556 **F** +86 791 8855 3556

Pentens Yangzhou (China)

No.1 Tian Heng Rd. Yizheng Xupu Industrial Zone, Yangzhou City, Jiangsu, China
T +86 514 8266 5166 **F** +86 514 8266 5165

Pentens Fujian (China)

Sheng Shi Rong Cheng 6# 1507 Quan Xiu Road, Quan Zhou City, Fujian, China
T +86 595 2201 2899 **F** +86 595 2202 1266


Pentens Hong Kong (Pentens (HK) Limited)

Flat 42 3/F Block D, Wah Lok Industrial Centre, 31-35 Shan Mei Street Fotan, Shatin New Territories, Hong Kong
T +85 2 3586 9765 **F** +85 2 3586 9765


Pentens Thailand (Pentens Co., Ltd.)

399/55 M.13, Soi. Kingkaeo 25/1, Kingkeo Rd., Rachathewa, Bangplee, Samutprakarn, Thailand, 10540
T +66 2 170 8619 **F** +66 2 170 8649


Pentens Vietnam

No.4, 7a Street, Binhthoi Hostel, 8 Ward, Dist.11, Hcmc, Vietnam.
T +84 8 3962 5374 **F** +84 8 3858 1194


Pentens Myanmar (Kw&s International Co., Ltd.)

No.202, Sin Phone Kyaung St., Mingalardone Industrial Zone, Yangon, Myanmar.
T +95 1 637 143 **F** +95 1 202 697


Pentens Philippines (Jazmed Enterprises)

No.4, June Street, Project 8, Quezon City, Philippines.
T +63 2 924 1861 **F** +63 2 924 1536


Pentens Singapore (Pentens (Sg) Pte. Ltd.)

1003 Bukit Merah Cental #06-27 Singapore 159836 Singapore.
T +65 6275 7525 **F** +65 6275 4525


Pentens Indonesia (PT. Pentens Indonesia)

Jl. Raya Serpong KM7, Kompleks Multi Guna Blok A1 No. 7, Indonesia.
T +62 21 2292 7702


Dong Ji (M) Sdn. Bhd. / Pentens Holdings Sdn. Bhd.

No.6 & 8, Jalan TPP 5/7, Taman Perindustrian Puchong, 47100 Puchong, Selangor, Malaysia.
T +60 3 8060 4396 **F** +60 3 8060 4394

Pentens Sabah

No.29, HS Industrial Park, Donggongan Penampang, 88000 Kota Kinabalu, Sabah.
T +60 8 8713 792 **F** +60 8 8703 792

Pentens Sarawak

No.283, Lot 496, SL-10, 5th Miles, Jalan Semaba, 93250 Kuching, Sarawak.
T +60 8 2577 396 **F** +60 8 2577 394

Pentens Penang

No.23, Jalan Industri Impian 1, Taman Industri Impian, 14000 Bukit Mertajam, Pulau Pinang.
T +60 4 5404 492 **F** +60 4 5404 392

Pentens Ipoh

21, Jalan Perindustrian Menglembu Impian 3, Kawasan Perindustrian Menglembu Impian, 31450 Ipoh, Perak.
T +60 18 5704 396

Pentens Johor

Setia Business Park 2, No. 9, Jalan Perniagaan Setia 3, Taman Perniagaan Setia, 81100 Johor Bahru, Johor.
T +60 7 5628 940 **F** +60 7 5627 248

Pentens Kedah

296, Jalan Perusahaan 2, Taman Bandar Baru, Mergong, 05150 Alor Setar, Kedah.
T +60 4 7304 396 **F** +60 4 7304 392

Pentens Pahang

B-30 Flr G, Pusat Komersial Semambu, Jalan Semambu, 25350 Kuantan, Pahang.
T +60 9 5055 102 **F** +60 9 5054 545

Pentens Melaka

No.70, Jalan IMJ 1, Industri Malim Jaya, 75250, Melaka.
T +60 6 3350 502 **F** +60 6 3343 391

A Member of International Group

www.pentens.com.my