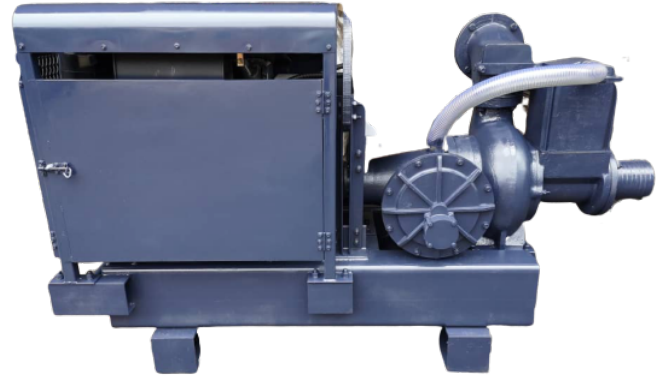
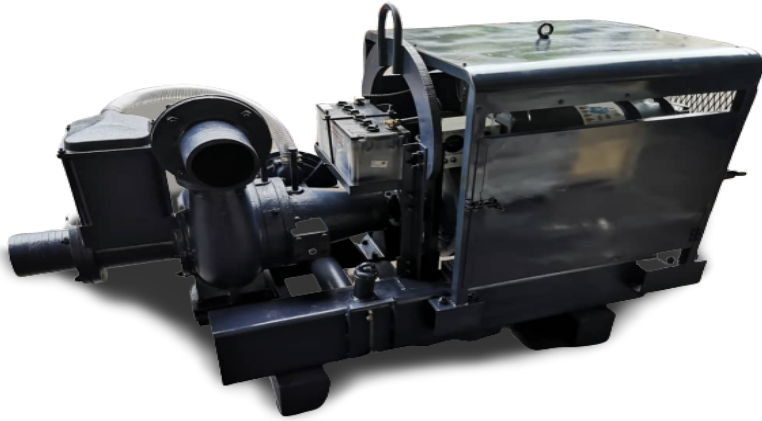


HOASHIKI 6INCH x 6 INCH DIESEL WATERPUMP



Features 功能:

- Automatic dry Priming 自吸泵
- Suitable for Construction Use
Sewage Dewatering 工事污泥水泵
- Easy & Low Maintenance 操作简单, 低维护费
- Key Start Engine 电启动柴油机
- Semi Open Impeller allowing
the passage of large diameter up to
100mm solids 半开式叶轮可处理小于100mm 固体
- Diesel Fuel Tank Capacity At 120 Litre 油缸容量 120升

Applications 用途 :

- Wellpoint Dewatering Systems
井点疏干, 降低建筑工地的地下水位
- Horizontal Drainage
横向水平排水
- Construction Site Dewatering
建筑工地排污水

MODEL :	HOASHIKI 6INCH x 6 INCH DIESEL WATERPUMP (好时机6寸X6寸江湖泵)
CAPACITY :	320 (m ³ /h) , 88litre/sec
TOTAL HEAD :	21.3M
SELF PRIMING LIFT:	8.8M
PUMP SPEED MAXIMUM :	1500RPM
PUMP SPEED MINIMUM :	1000RPM
INLET & OUTLET PORT :	152.4MM / 6INCH
POWER UNIT :	F3L912 BEINEI DIESEL ENGINE (32HP/1500rpm) Fuel Consumption 2.8L/Hr@1500rpm
MEASUREMENT :	Length : 213cm Width : 82 cm Height : 147 cm Weight : 1060kgs

