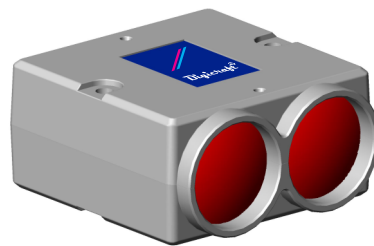


GBS series Dual Beam Infrared Safety Sensor And Intruder Alarm Sensor //



Twin Lens Dual Beams
Infra Red Safety Beam Transceiver

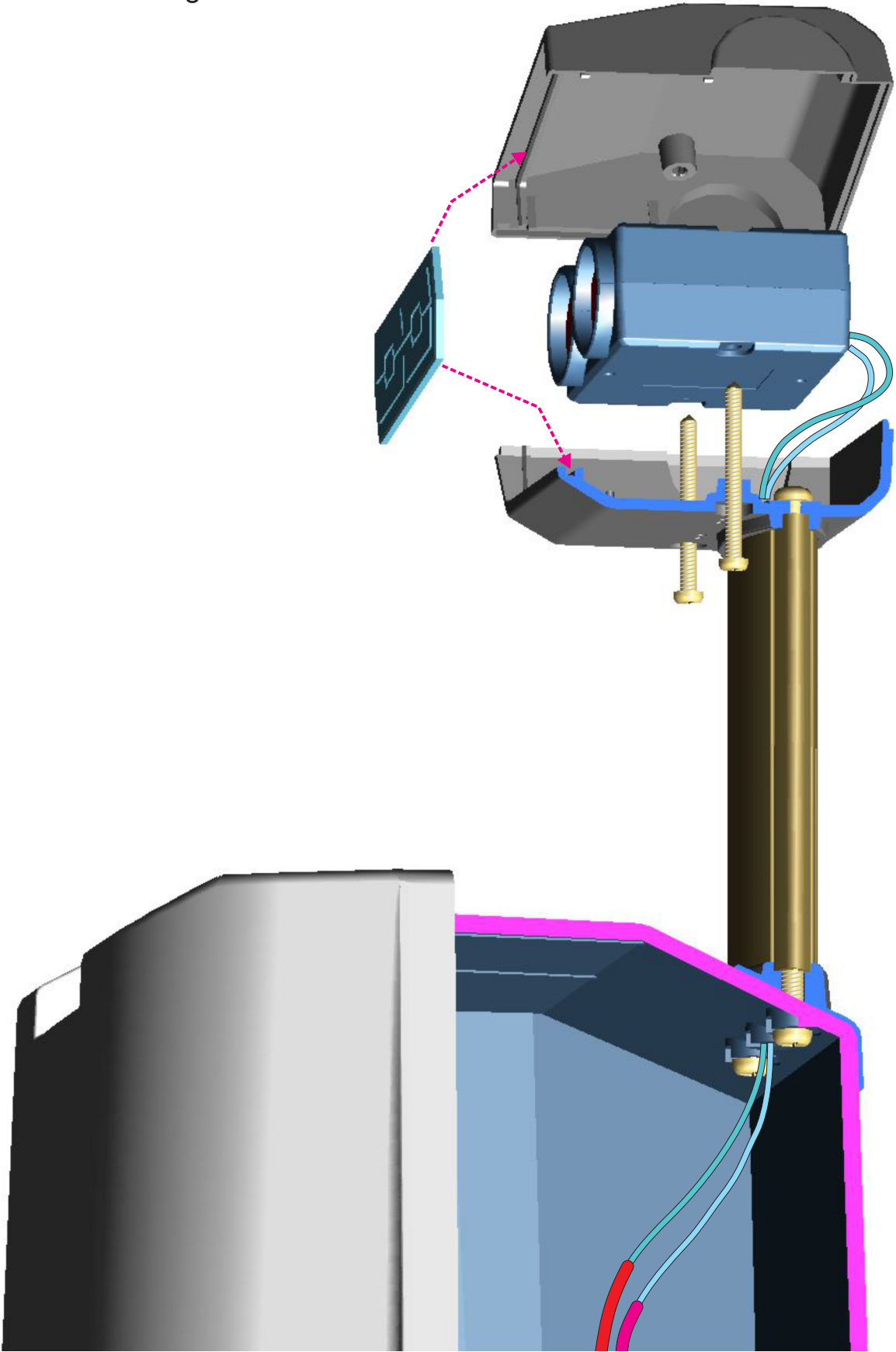
There are 2 common problems facing by a single beam model

- (1) Strong Sunlight Can Cause The Sensor 'Blinds' And The Whole System Fails
- (2) Small Flying Insects Or Objects May Cause False Intrusion Alarm

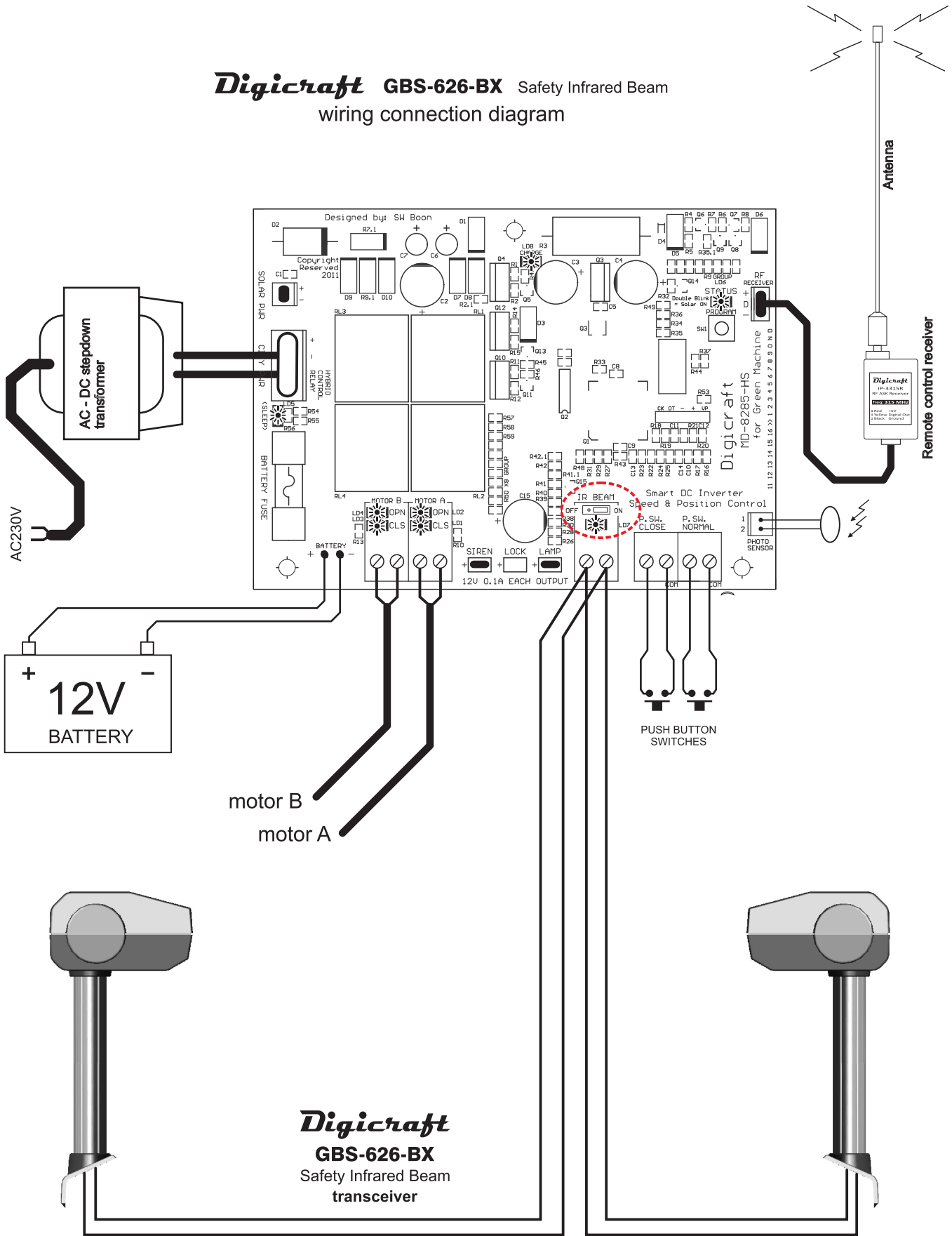
How The 2-ways Twin Lens Dual Beams Technology Eliminates The Problems?

- (1) If One Sensor 'Blinds', The Other Sensor Can Still Keep The Normal Function
- (2) Alarm Can Only Be Triggered When Both Beams Are Interrupted.
Usually Small Objects Can Only Interrupt One Beam Without Giving Alarm

Mounting the device onto the motor housing



Digicraft GBS-626-BX Safety Infrared Beam
wiring connection diagram



Digicraft
GBS-626-BX
Safety Infrared Beam
transceiver