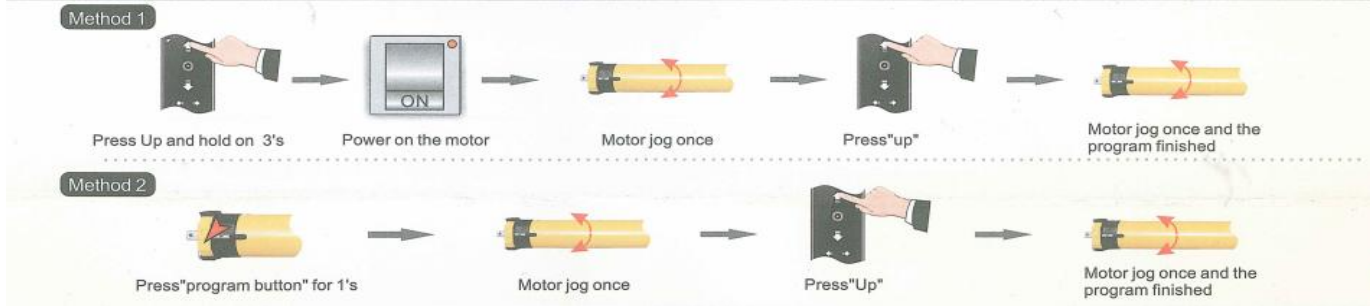
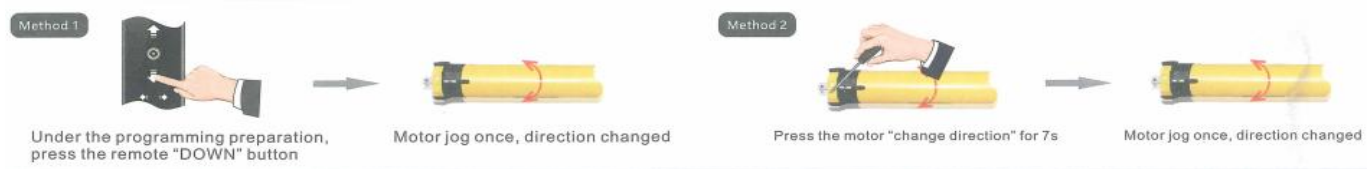


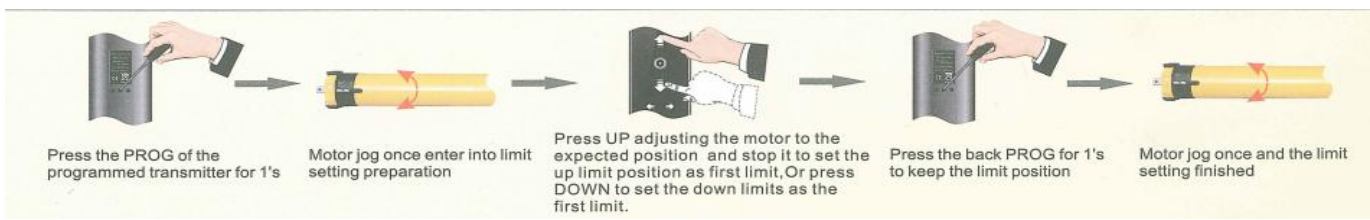
1) Programming



2) Change Direction



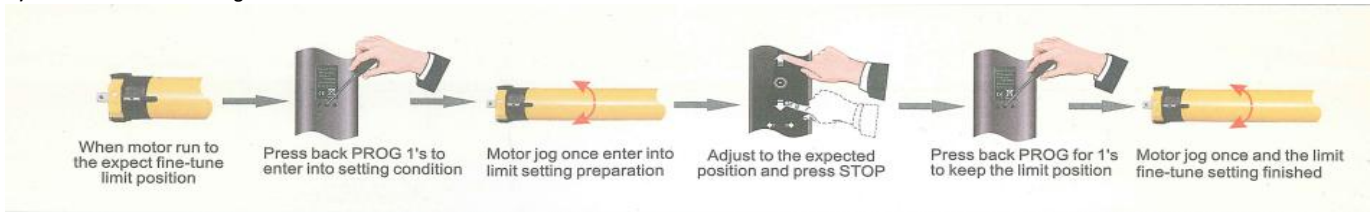
3) First Limit Setting



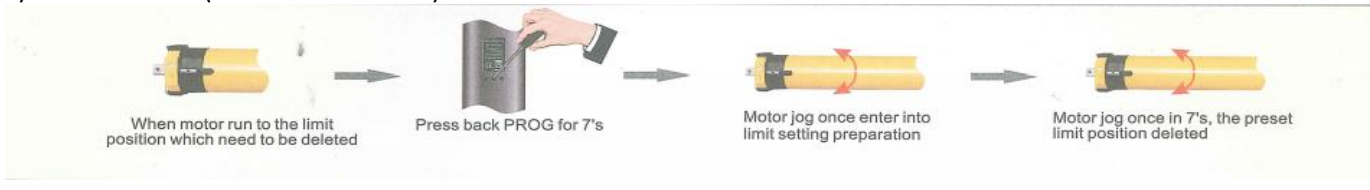
4) Other Limit Setting



5) Limit Position Fine-Tuning



6) Delete Limit Position (Can't Delete The First Limit)



7) Change to Dot Move/ Continuous Move



8) Add Extra Remote Control



9) Delete Single Channel



10) Delete All Channels

Method 1



Method 2

