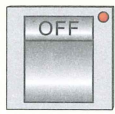


Operation Instructions

1. Enter Program Mode

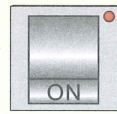
Method 1



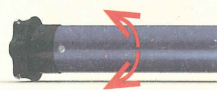
Turn the motor power OFF



Press and hold the UP button for 3s

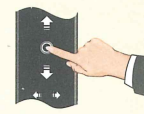


Keep holding the UP button and turn the motor power ON.

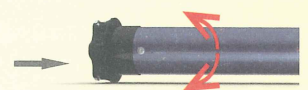


The motor jog once, program mode entered.

Method 2

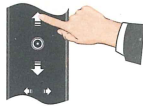


Press the STOP button on the programmed remote for 5s.

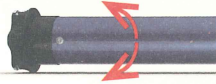


The motor jog once, program mode entered.

2. Remote pairing

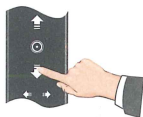


Enter Program Mode first (refer to item 1). Press the UP button on the remote.

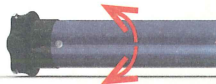


The motor jog once, remote pairing completes.

3. Change Direction

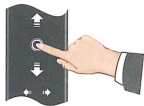


Enter Program Mode first (refer to item 1). Press the DOWN button on the remote.

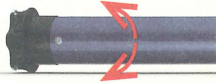


The motor jog once, direction change completes.

4. Dot move/Continuous Move Switch



Enter Program Mode first (refer to item 1). Press STOP button on the remote.



The motor jog once, switch completes.

Remarks: the default mode is dot move. Press and hold the UP or DOWN button for 1.5s, the motor will move continuously. When the UPPER and LOWER limits are set, motor will switch to continuous move mode automatically.

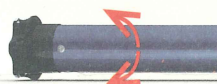
5. "Upper/Lower" limit setting automatically

*When setting UPPER and LOWER limits automatically, the UPPER limit will always be set first.

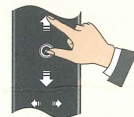
Method 1



Press the PROG button on the back of the emitter

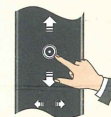


The motor jog once, limits setting mode entered.



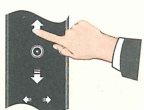
Press the STOP and UP buttons at the same time, the motor will move up&down twice. UPPER limit and LOWER limit will be set automatically.

OR

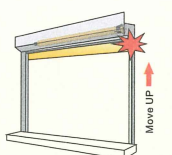


Press the STOP and DOWN buttons at the same time, the motor will move down&UP twice. LOWER limit and UPPER limit will be set automatically.

Method 2



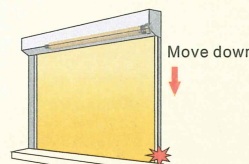
Press and hold UP button for 1.5s, zip style blind goes up continuously.



The zip style blind stops and back-forth twice when it touches the obstacle. The UPPER limit will be set automatically.



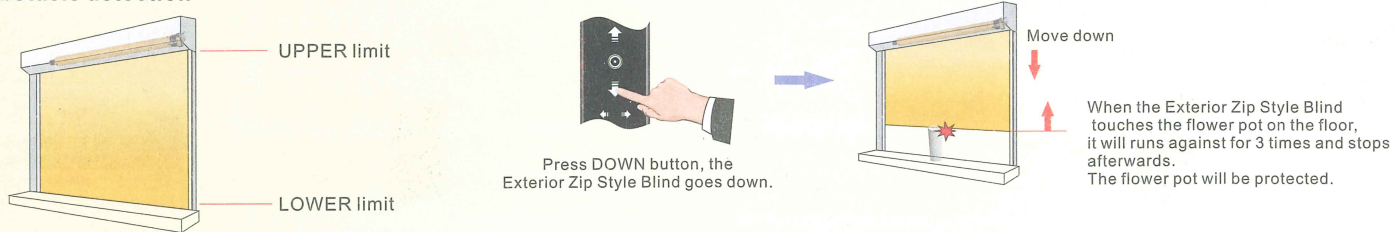
Press and hold DOWN button for 1.5s, zip style blind goes down continuously.



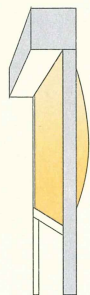
The zip style blind stops back-forth when it touches the obstacle. The LOWER limit will be set automatically.

6. Demonstration for intelligent obstacle function *Make sure the UPPER and LOWER limits are set

Obstacle detection

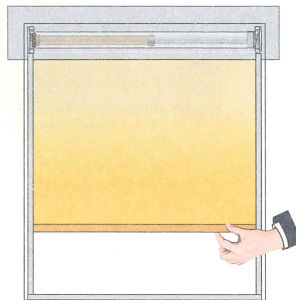


Wind resistant



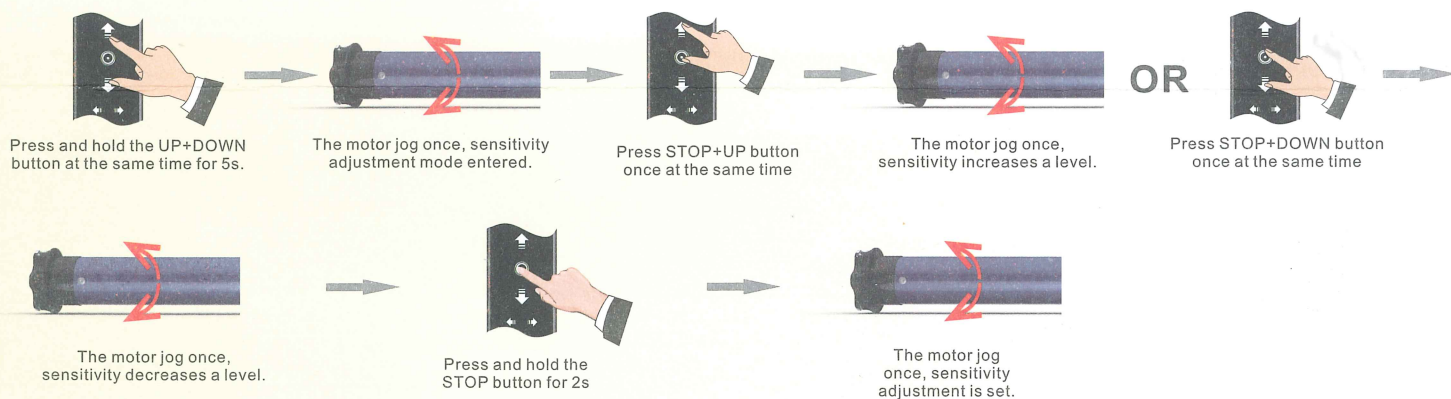
When just meet a temporary gust of wind, Exterior Zip Style Blind runs against and then continues running to the lower end level. For 3 times, detecting to a real blockade, Exterior Zip Style Blind runs against and stop afterwards.

Intelligent overload protection

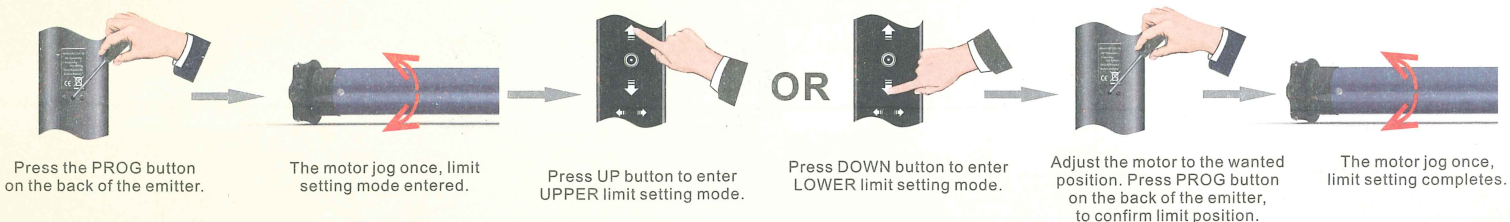


Exterior Zip Style Blind runs against the blockade for 3 times and stops afterwards.

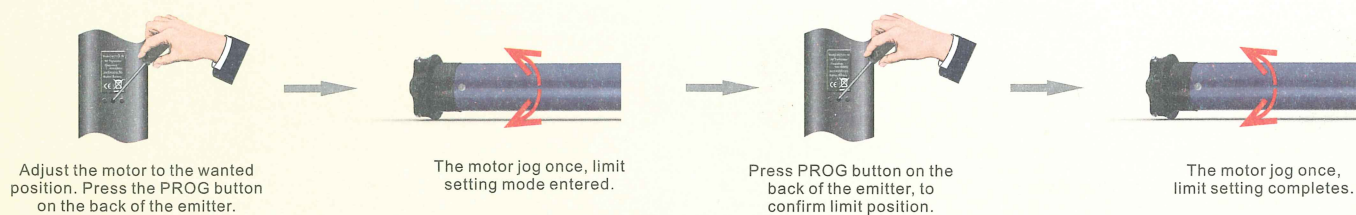
7. Sensitivity adjustment (Remarks: There are totally 10 adjustable sensitivity levels available. Level 1 is the most sensitive level. The default level is level 6)



8. First limit setting



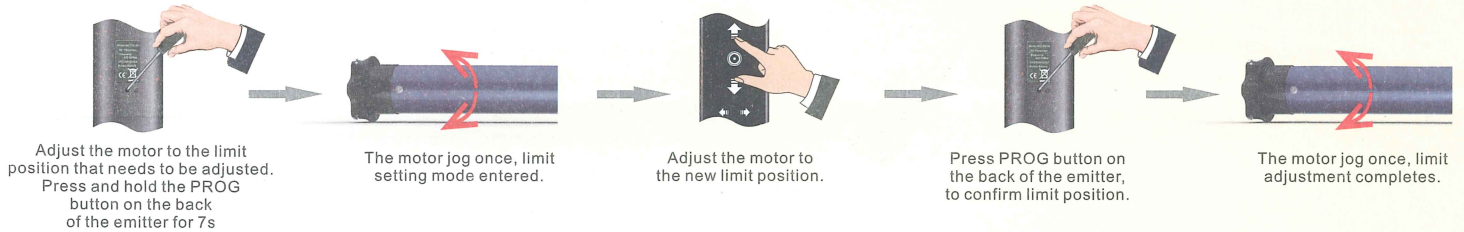
9. Other limits setting (Remarks: If there's no any action within 30's, the motor will exit from limit position setting mode automatically.)



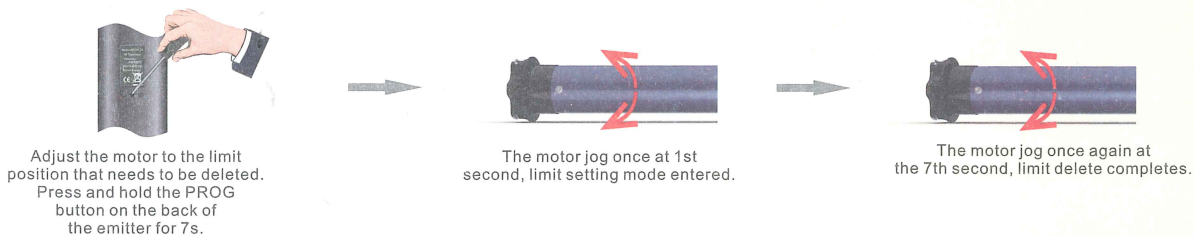
10. Supplementary explanation

- A. Maximum 3 different limit positions can be set, and the furthest 2 limits are called UPPER limit and LOWER limit. The other limit is called INTERMEDIATE limit.
- B. If the first limit is UPPER limit, all other limits can only be set below it. If the first limit is LOWER limit, all other limits can only be set above it.
- C. Every limit position can be fine-tuned or deleted separately (the first limit position can only be fine-tuned but can't be deleted separately, it can be deleted when deleting all setting).
- D. Under dot move mode, if you press and hold the UP or DOWN button for more than 1.5s, the motor will move continuously.
- E. Under continuous move mode, if you double press the UP or DOWN button (1s for each time), the motor will go directly to the UPPER or LOWER limit without any stopping at the INTERMEDIATE limit.

11. Limit fine tuning



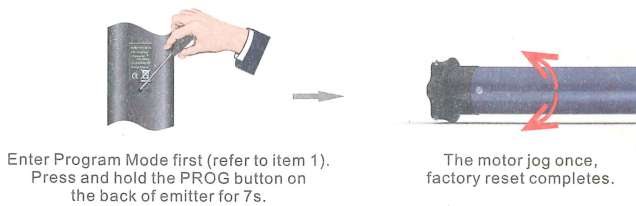
12. Delete limits



13. Delete single emitter



14. Factory reset



Remarks:

1. If there is no any action within 10s, the motor will exit program mode automatically.
2. All programmed emitters, limits, movements, dot move/continuous move setting and rebound setting will be deleted. Rebound sensitivity will resume to level 6. (the default sensitivity level of the motor is level 6)
3. The following functions cannot be deleted: RS485 function, controlling method, rebound time setting, dot move angle and Baud rate.

Trouble Shooting

	Problem	Possible cause	Solution
1	When power is ON, the motor does not work or works slowly.	a. The voltage of power is wrong. b. Overload. c. Motor is stuck by incorrect installation of the accessories.	a. Change to a motor that matches the power voltage. b. Change to a motor that matches the torque. c. Check the installation of all accessories.
2	The motor stops suddenly during operation.	a. Motor is in overheating protection mode. b. Power OFF.	a. The motor will resume automatically when it cools down. (3-10 minutes) b. Check the power supply.
3	Motor rebound function is not effective.	a. UPPER or LOWER limits have not been set. b. Not using the right adaptor for the motor.	a. Set UPPER and LOWER limits. b. Change to the right adaptor for the motor.
4	Motor goes up when it suppose to go down.	a. The friction of the roller is too much and the rebound function is activated. b. Motor is not installed horizontally.	a. Check if there is any object in the track. b. Reinstall the motor properly.