



Haskel

MILTON ROY



HIGH-PRESSURE VALVES AND SYSTEM COMPONENTS



OUR PRODUCTS ARE BACKED BY OUTSTANDING TECHNICAL SUPPORT, AN
EXCELLENT REPUTATION FOR RELIABILITY AND WORLDWIDE DISTRIBUTION



sales@kenenergy.com.my

TABLE OF CONTENTS



Haskel International, Inc.
Burbank, California, U.S.A.



Haskel Energy Systems, Ltd.
Sunderland, England, U.K.

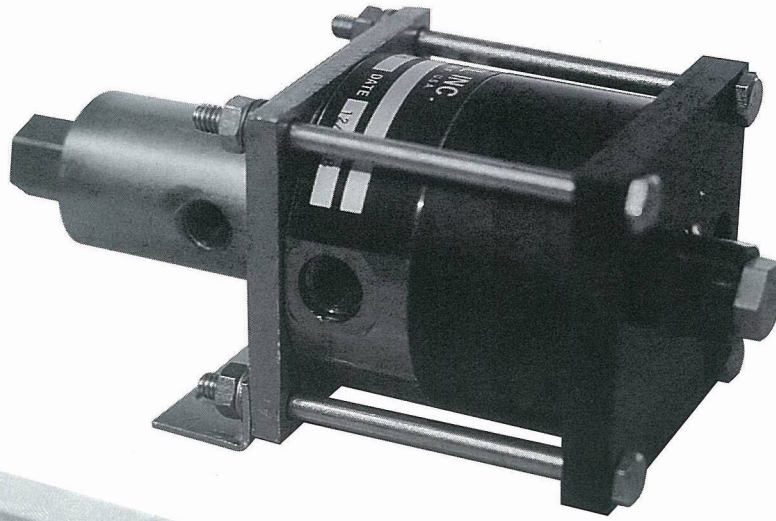
Haskel International, Inc. has almost 50 years of hydraulic and pneumatic engineering experience in the design and manufacture of air driven gas boosters, air amplifiers and liquid pumps. Located in Burbank, California, U.S.A., with an additional manufacturing plant in Sunderland, United Kingdom, the company is supported by a worldwide network of offices and distributors.

Haskel products now offer the most complete range in this industry, whether measured by ultimate pressure flow or output horsepower capability; or by the variety of media with which they are compatible. The high-pressure valves and system components described in this catalog have been designed to assist in the controlled use of pressure and flow-generating equipment manufactured by Haskel, as well as others.

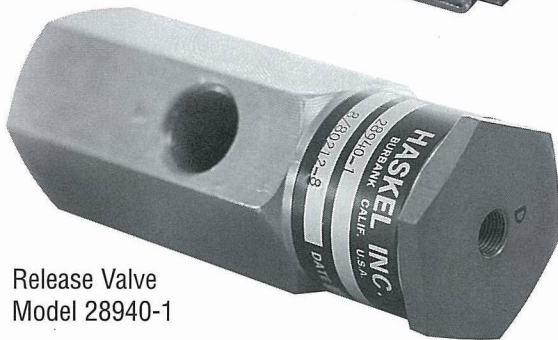
Continuous investment in the most modern machinery and technology ensures that Haskel will remain the leader in this field.

	Page
Stainless Steel Check Valves	3
Air Pilot Switches	4 – 5
Air Pilot Switches — Selection Charts	6 – 7
Air Operated Directional Control and Release Valves	8
Air Piloted Valves — Typical Applications	9
Air Piloted Valves — Selection Charts	10 – 11
Regulating Relief Valves	12 – 13
Hydraulic Accumulators and Gas Receivers	14
Filters	15
Plenum Chambers	15
6000 PSI Gas Storage Cylinder	15

AIR OPERATED DIRECTIONAL CONTROL AND RELEASE VALVES



3-Way Release Valve
Model 50135



Release Valve
Model 28940-1



Release Valve
Model 53585



Release Valve
Model 54416

These directional control valves are basically a family with common characteristics and benefits.

- They are seated poppet or ball design for virtually zero leakage at high pressures with low viscosity fluids. They are not “bubble-tight” on gas.

Note: Normally open models will generally hold a tighter seal on low viscosity liquid or gas because seating force does not depend on inlet pressure.

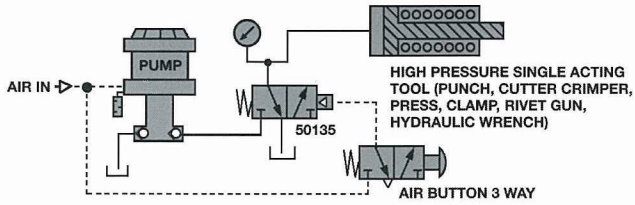
- They are directly air-actuated for ideal system compatibility in wet or hazardous areas, or when used with air driven pumps or boosters. Yet, if electronic or electrical control is preferred, they can be actuated with any of the

wide selection of subminiature 3-way solenoid air valves available from many manufacturers.

- They employ the same basic area ratio principle used in Haskel pumps enabling high forces to be easily and directly controlled from low-pressure plant main or instrument air.
- Although not normally considered for pressure control, all of the normally open 2-way models can do double-duty in a circuit by also providing a safety relief function simply by installing a small air regulator in their pilot line (schematics next page).

AIR PILOTED VALVES — TYPICAL APPLICATIONS

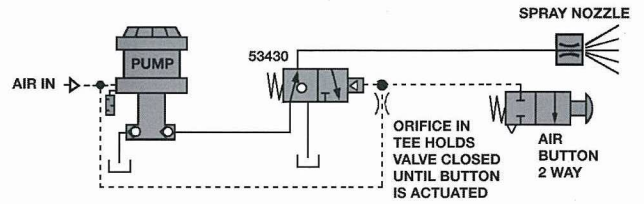
50135 3-WAY NORMALLY CLOSED



NOTES:

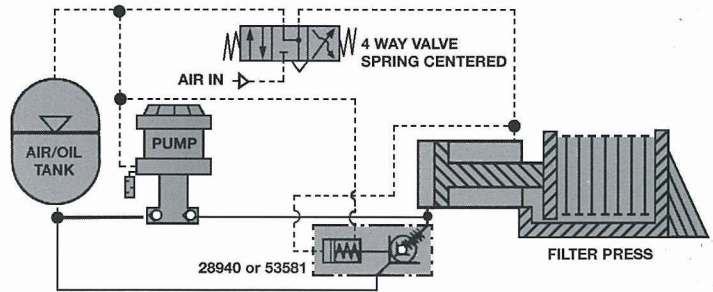
1. IF TOOL IS DOUBLE ACTING, ADD ANOTHER 50135 WITH AIR BUTTON IN PARALLEL.

53430 3-WAY NORMALLY OPEN

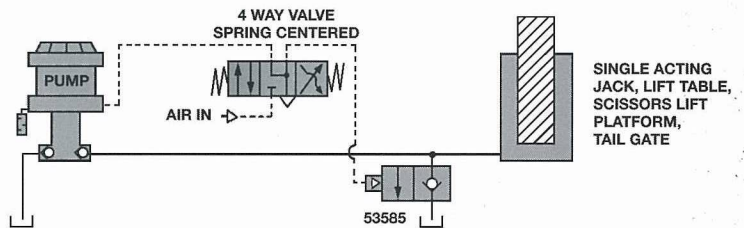


2. IF ADDITIONAL TOOLS ARE TO BE POWERED OFF SAME PUMP, ADD VALVES IN PARALLEL WITH CHECK VALVE AT EACH INLET PORT.

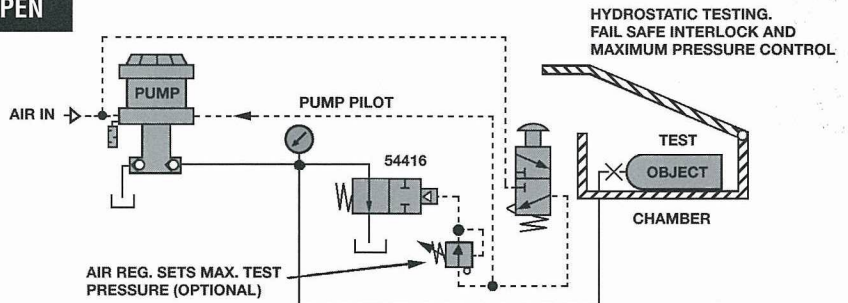
28940 or 53581 2-WAY, NORMALLY CLOSED, 2-STAGE



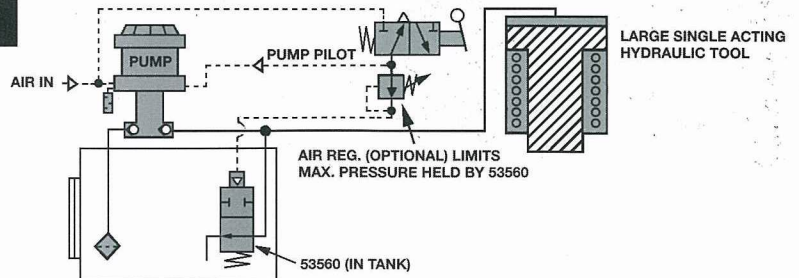
53585 2-WAY NORMALLY CLOSED



54416 or 54492 2-WAY NORMALLY OPEN



53560 2-WAY NORMALLY OPEN



AIR PILOTED VALVES — SELECTION CHARTS

TYPE	NORMAL POSITION	SCHEMATIC WITH APPROXIMATE WEIGHT AND SIZE	MODEL NUMBER	REMARKS	NOMINAL AREA RATIO FOR ACTUATION	MAXIMUM INLET WITH 100 PSIG AIR PILOT	CV (MIN.)	PORT SIZES AND MAXIMUM PRESSURES, PSI		MATERIALS (LIQUID SECTION)
								P, C or B	T or A	
3-WAY	Closed	<p>Weight: 5-3/4 lbs.</p>	50135	<ul style="list-style-type: none"> Closed crossover Dual C porting 	150:1		P to C .42	1/4" NPT 10,000	3/8" SAE Tube 3000	Plated Steel, Polyurethane, Buna N
			50135-1	<ul style="list-style-type: none"> Same as above and includes manual override 	150:1		C to T .64			
	Open	<p>Weight: 1 lb.</p>	53430-4	<ul style="list-style-type: none"> Open crossover Rated for plain water 	85:1	8500 psi	.3	1/4" NPT 15,000	1/4" NPT 3000	Stainless Steel, Buna N, PTFE
			53430-5		50:1	5000 psi	.6			
			53430-6		40:1	4000 psi	.8			
			53430-7		150:1	12,000 psi	.1			

AIR PILOT PORTS: 150 PSI MAXIMUM ALL MODELS	SIZE	MODELS
	1/8" NPT	54416, 53430, 53585, 28940, 53581 (C)
	1/4" NPT	50135, 53560, 53581 (D)

TYPE	NORMAL POSITION	SCHEMATIC WITH APPROXIMATE WEIGHT AND SIZE	MODEL NUMBER	REMARKS	NOMINAL AREA RATIO FOR ACTUATION	MAXIMUM INLET WITH 100 PSIG AIR PILOT	CV (MIN.)	PORT SIZES AND MAXIMUM PRESSURES, PSI		MATERIALS (LIQUID SECTION)
								P, C or B	T or A	
2-WAY	Closed	<p>RELEASE VALVES MODELS 28940 and 28940-1 Weight: 2-3/4 lbs. MODELS 53581 - Weight: 5 lbs.</p>	28940	<ul style="list-style-type: none"> 2-stage decompression and release Rated for plain water 	250:1 (1st stage) 9:1 (2nd stage)	15,000 psi	1st stage - .1 2nd stage - 1.50	1/2" NPT 15,000	1/2" NPT 10,000	Stainless Steel, Buna N, PTFE
		28940-1	<ul style="list-style-type: none"> 2-stage decompression and release 	150:1 (1st stage) 12:1 (2nd stage)	6000 psi	1st stage - .4 2nd stage - 5.5	1" NPT 6000	3/4" NPT 500	Plated Steel, Buna N, PTFE	
		53581								
		53585	<p>RELEASE VALVE MODEL 53585 Weight: 1 lb.</p>	<ul style="list-style-type: none"> Single-stage release Rated for plain water 	110:1	10,000 psi	.1	1/4" NPT 10,000		
		54416 54492-1	<p>RELEASE VALVE MODEL 54416 Weight: 1 lb.</p>	<ul style="list-style-type: none"> Rated for plain water 54492 is needle type allowing flow in either direction 	55:1	5000 psi	.6	1/4" NPT 15,000	1/4" NPT 3000	Stainless Steel, Aluminum, Buna N
	54416-1 54492		120:1	11,000 psi	.25					
	54416-2 54492-2		160:1	15,000 psi	.15					
	54416-3		90:1	7800 psi	.32					
	54416-4		300:1	25,000 psi	.08	1/4" super-pressure 25,000				
	Open	57175-30	<p>RELEASE VALVE MODEL 57175 - Weight: 5 lbs.</p>	<ul style="list-style-type: none"> Rated for plain water Needle type allows flow in either direction 	600:1	30,000 psi	.15	1/4" super-pressure 30,000		
57175-60				1200:1	60,000 psi	.09	1/4" super-pressure 60,000			
53560-12		<p>RELEASE VALVE MODEL 53560 - Weight: 2 lbs.</p>	<ul style="list-style-type: none"> Designed for mounting inside tank 	25:1	2500 psi	5.5	1/2" NPT 3000	5/8" Dia. Vent Hole ATM	Plated Steel, Aluminum, Buna N	
53560-150			160:1	15,000 psi	.85	1/4" NPT 15,000				



Haskel International

100 East Graham Place
Burbank, California 91502 • USA
Telephone: (818) 843-4000
Fax: (818) 556-2549 or (818) 841-4291
www.haskel.com



Haskel United Kingdom

North Hylton Road
Sunderland SR5 3JD • England • UK
Tel: 44-191-549-1212 • Fax: 44-191-549-0911

Haskel Asia

23 Tagore Lane #03-06
Tagore 23 Warehouse Complex
Singapore 787601
Tel: 65-6455-7559 • Fax: 65-6455-2841
www.haskel.com.sg

Haskel Australia

P.O. Box 267
Salisbury, Qld. 4107, Australia
Tel: 61-7-3277-9118 • Fax: 61-7-3277-6129
www.haskel.com.au

Haskel Germany

D-46485 Wesel
Fritz-Haber Strasse • Germany
Tel: 49-281-98-48-00 • Fax: 49-281-98-48-020
www.haskel.com.de

Haskel France

4 rue du haut de la Cruppe
F-59650 Villeneuve d'Ascq • France
Tel: 33-320-04 66 00 • Fax: 33-320-33 31 95
www.haskel.fr

Haskel Spain

Paseo Urbarburu 81 • Edif.5 • 1ª Planta
Locales 1 y 2 • Pol. 27 Martutene
20115 Astigarraga • Gipuzkoa • Spain
Tel: 34-943-47 45 66 • Fax: 34-943-45 11 86
www.haskel-es.com

Haskel Aberdeen

Unit 14, Airways Industrial Estate,
Pitmedden Road
Dyce, Aberdeen AB21 ODT • Scotland
Tel: 01224-771784 • Fax: 01224-723642

Haskel Italy

via Carabelli 28
21041 Albizzate • Varese • Italy
Tel: 39-331-987596 • Fax: 39-331-987597
www.haskel.it

For further information on
Haskel products, visit our web-
site at: www.haskel.com

ACC-GL /Rev. 06-06

sales@haskelenergy.com.my