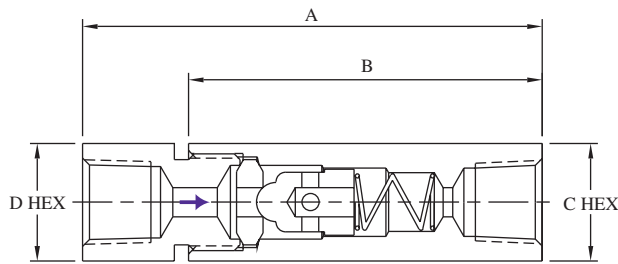


PIPE CHECK VALVES



BuTech ball check valves prevent reverse flow where leak-tight shutoff is not necessary. Standard materials of construction are 316 stainless steel with 17-4PH poppet for longer life, and 300 series stainless steel spring.

Note: For 316 stainless steel wetted parts, add **-316WP** to the catalog number.

Cracking pressure: 15 PSI (1 bar) approximate

Operating Temperature Range:

-420° to +1200°F

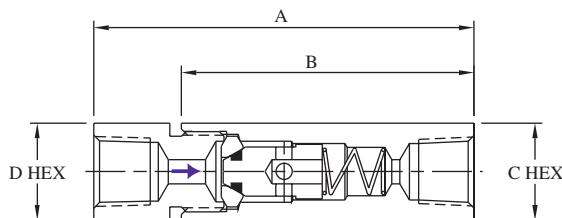
(-251° to +648°C)

BALL CHECK VALVES

Catalog Number	Connection	MAWP	Cv	A	B	C	D
FPBC2	1/8" NPT	15,000 PSI 1030 bar	0.15	2.62" (66.5)	2.12" (53.8)	0.63" (16.0)	0.50" (12.7)
FPBC4	1/4" NPT	15,000 PSI 1030 bar	0.63	2.94" (74.7)	2.26" (57.4)	0.75" (19.1)	0.75" (19.1)
FPBC6	3/8" NPT	15,000 PSI 1030 bar	0.80	3.54" (89.9)	2.62" (66.5)	1.12" (28.4)	1.00" (25.4)
FPBC8	1/2" NPT	15,000 PSI 1030 bar	2.30	4.32" (109.7)	3.50" (88.9)	1.38" (35.1)	1.38" (35.1)
FPBC12	3/4" NPT	10,000 PSI 690 bar	3.40	5.89" (149.6)	4.75" (120.7)	1.75" (44.5)	1.50" (38.1)
FPBC16	1" NPT	10,000 PSI 690 bar	5.20	7.29" (185.2)	5.75" (146.1)	2.12" (53.8)	1.75" (44.5)

To order a valve with a cracking pressure other than the standard 15 PSI, add the cracking pressure to the end of the catalog number. Example: An FPBC8 with 50 PSI cracking pressure would be ordered as **FPBC8-50**.

Cracking pressures available up to 100 PSI (7 bar)



BuTech o-ring check valves reliably prevent backflow where leak-tight shutoff for liquids or gases is required. Standard materials of construction are 316 stainless steel with Buna-N o-ring and 300 series stainless steel spring.

Cracking pressure: 15 PSI (1 bar) approximate

Operating Temperature Ranges:

O-ring Material	Operating Temperature Range	Catalog Suffix
Buna-N	-65° to +250°F (-54° to +121°C)	----
Viton	-40° to +500°F (-40° to +260°C)	-VA
Teflon	-320° to +400°F (-195° to +204°C)	-TFE
Kalrez	-20° to +550°F (-29° to +288°C)	-HT

O-RING CHECK VALVES

Catalog Number	Connection	MAWP	Cv	A	B	C	D
FPSC2	1/8" NPT	15,000 PSI 1030 bar	0.15	2.62" (66.5)	2.12" (53.8)	0.63" (16.0)	0.50" (12.7)
FPSC4	1/4" NPT	15,000 PSI 1030 bar	0.63	2.94" (74.7)	2.26" (57.4)	0.75" (19.1)	0.75" (19.1)
FPSC6	3/8" NPT	15,000 PSI 1030 bar	0.80	3.54" (89.9)	2.62" (66.5)	1.12" (28.4)	1.00" (25.4)
FPSC8	1/2" NPT	15,000 PSI 1030 bar	2.30	4.32" (109.7)	3.50" (88.9)	1.38" (35.1)	1.38" (35.1)
FPSC12	3/4" NPT	10,000 PSI 690 bar	3.40	5.89" (149.6)	4.75" (120.7)	1.75" (44.5)	1.50" (38.1)
FPSC16	1" NPT	10,000 PSI 690 bar	5.20	7.29" (185.2)	5.75" (146.1)	2.12" (53.8)	1.75" (44.5)

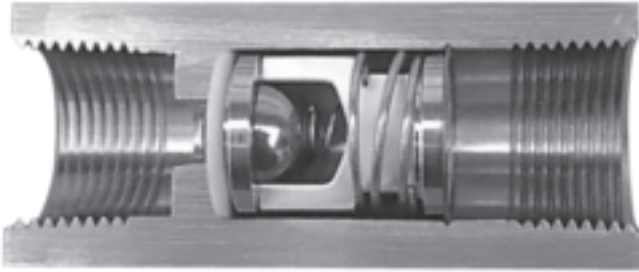
To order a valve with a cracking pressure other than the standard 15 PSI, add the cracking pressure to the end of the catalog number. Example: A FPSC4 with 40 PSI cracking pressure would be ordered as **FPSC4-40**.

Cracking pressures available up to 100 PSI (7 bar)

All dimensions are for reference only and are subject to change.
Dimensions in parentheses are millimeters (mm)

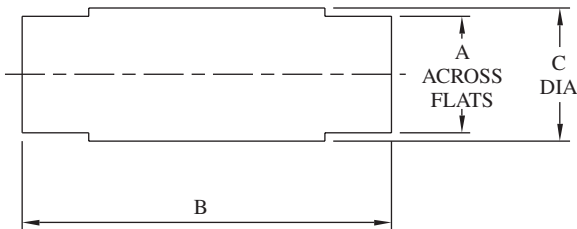


TWIN SEAL CHECK VALVES

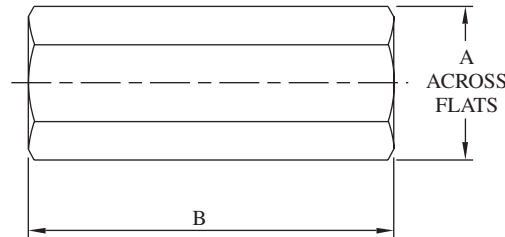


When a BuTech Twin-Seal check valve initially closes, the ball seals on the teflon seat. As the teflon begins to deflect under pressure, the ball contacts the metal seat. This creates a metal-to-metal seal, relieving the teflon of the full pressure load. Standard materials of construction are 316 stainless steel with 300 series stainless steel spring. Note: For 316 stainless steel wetted parts, add **-316WP** to the catalog number. Other seat materials are available, please consult factory.

Cracking pressure: 15 PSI (1 bar) approximate
 Operating Temperature Range:
 -320° to +400°F
 (-195° to +204°C)



FPSSC4



FPSSC6 through FPSSC16

Catalog Number	Connection	MAWP	Cv	A	B	C
FPSSC4	1/4" NPT	15,000 PSI 1030 bar	1.25	0.88" (22.4)	3.00" (76.2)	1.00" (25.4)
FPSSC6	3/8" NPT	15,000 PSI 1030 bar	1.25	1.00" (25.4)	2.75" (69.9)	—
FPSSC8	1/2" NPT	15,000 PSI 1030 bar	2.16	1.18" (30.0)	3.12" (79.2)	—
FPSSC12	3/4" NPT	10,000 PSI 690 bar	4.00	1.38" (35.1)	3.25" (82.6)	—
FPSSC16	1" NPT	9,000 PSI 620 bar	5.00	1.75" (44.5)	4.25" (108.0)	—

To order a valve with a cracking pressure other than the standard 15 PSI, add the cracking pressure to the end of the catalog number. Example: A FPSSC4 with 50 PSI cracking pressure would be ordered as **FPSSC4-50**.

Cracking pressures available up to 100 PSI (7 bar)

All dimensions are for reference only and are subject to change.
 Dimensions in parentheses are millimeters (mm)