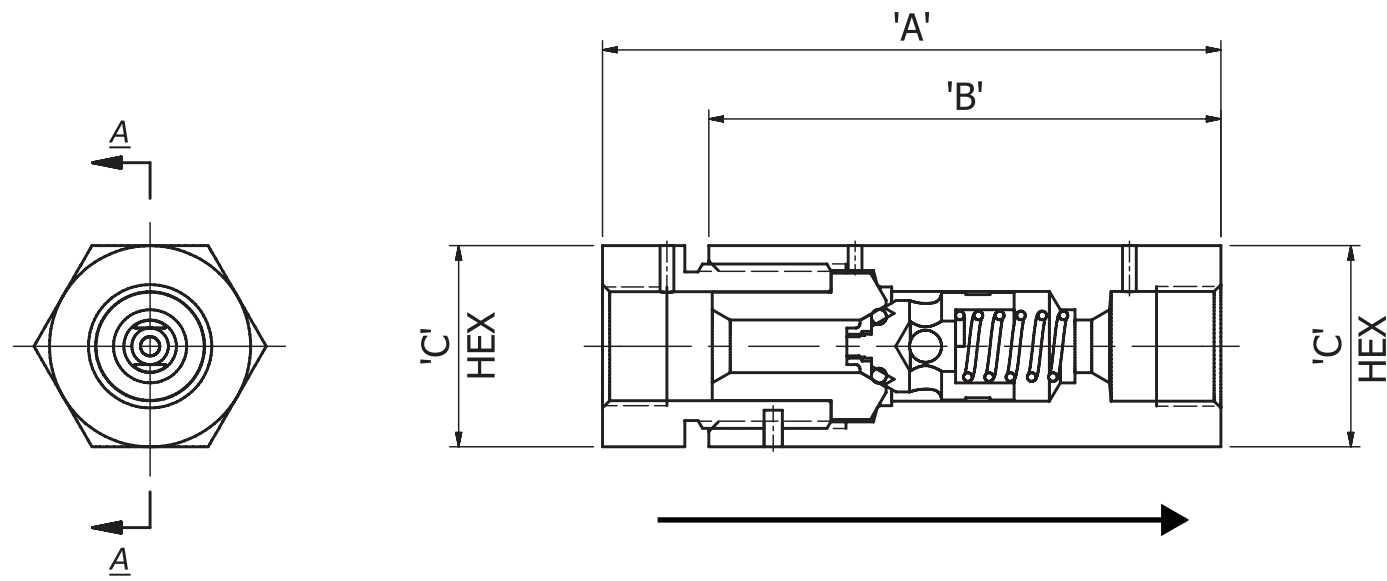
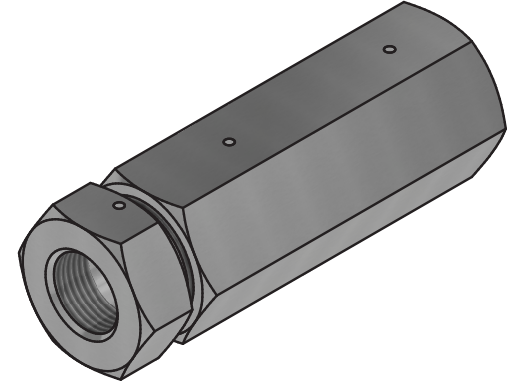
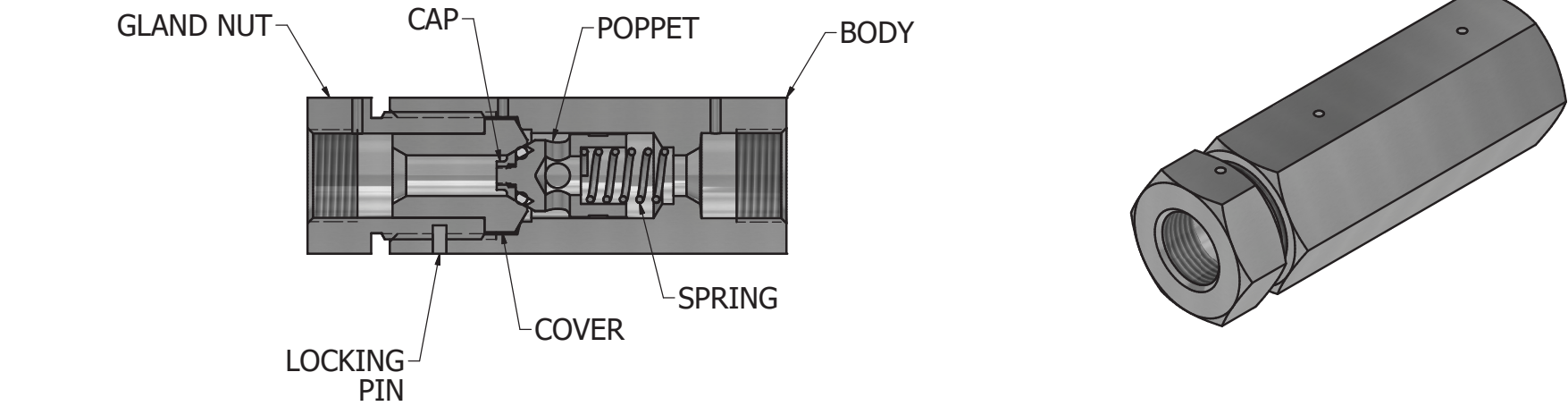


Subsea Check Valves

Pressure to 15,000 PSI



Dimensions			
Connection:	A	B	C (hex)
1/4" FNPT	2.94	2.26	0.75
3/8" FNPT	3.56	2.62	1.12
1/2" FNPT	4.62	3.5	1.37
3/8" M/P	3.12	2.62	1.12
9/16" M/P	4.23	3.5	1.37

Subsea Check Valves

Pressure to 15,000 PSI



Example Catalog Number: SSC6M15T3

Catalog Number:	SSC	6M	15	T	3		
-----------------	-----	----	----	---	---	--	--

Valve Description/ Requirements: 1. Valve Series 2. Connection 3. Pressure Rating (See Table 2) 4. O-Ring Material 5. Material of Construction 6. Cracking Pressure 7. Options

1. Valve Series		2. Connection		4. O-Ring Material		5. Material of Construction		6. Cracking Pressure	
SBC	Subsea Ball Check Valve	-4P	1/4" FNPT (15 KPSI)	B	Buna (+275°F Max)	3	316 Stainless Steel (15 KPSI)	Blank	Standard ~ 15 PSI
SSC	Subsea Soft Seat Check Valve	-6P	3/8" FNPT (15 KPSI)	H	HNBR (+350°F Max)	5	Duplex 2205 (15 KPSI)	-50	~ 50 PSI
		-8P	1/2" FNPT (15 KPSI)	N	Nitrile (+250°F)	7	Super Duplex 2507 (15 KPSI)	-100	~ 100 PSI
		-6M	3/8" M/P female (15 KPSI)	T	PTFE				Consult BuTech for additional options
		-9M	9/16" M/P female (15 KPSI)	F	Fluorocarbon (+400°F)				
			Consult BuTech for additional options	G	GFLT (+400°F)				
				V	Vermilion				
7. Options									
Blank	Standard FAT Performed								
-PSL3	Test Level								
-PSL3G	Test Level With Gas								
	Consult BuTech for additional options								

