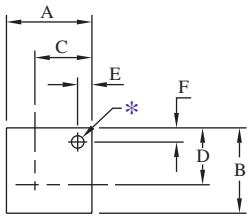
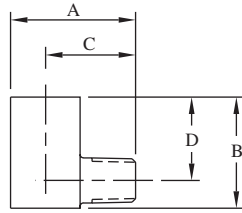


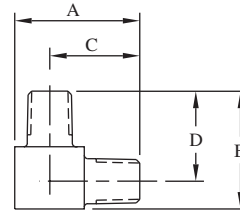
PIPE ELBOWS



Female Elbow



Street Elbow



Male Elbow

FEMALE ELBOW

Catalog		Block							Mounting Holes*		
Number	Connection	Port	MAWP	A	B	C	D	Thickness	E	F	Dia.
FPL2	1/8" NPT	0.187" (4.7)	15,000 PSI 1030 bar	1.13" (28.7)	1.00" (25.4)	0.75" (19.1)	0.62" (15.7)	0.62" (15.7)	0.25" (6.4)	0.20" (5.1)	0.22" (5.6)
FPL4	1/4" NPT	0.250" (6.4)	15,000 PSI 1030 bar	1.50" (38.1)	1.25" (31.8)	1.00" (25.4)	0.81" (20.6)	0.75" (19.1)	0.38" (9.7)	0.25" (6.4)	0.22" (5.6)
FPL6	3/8" NPT	0.375" (9.5)	15,000 PSI 1030 bar	1.50" (38.1)	1.50" (38.1)	1.00" (25.4)	1.00" (25.4)	1.00" (25.4)	0.25" (6.4)	0.25" (6.4)	0.22" (5.6)
FPL8	1/2" NPT	0.500" (12.7)	15,000 PSI 1030 bar	1.75" (44.5)	1.75" (44.5)	1.25" (31.8)	1.25" (31.8)	1.25" (31.8)	0.37" (9.4)	0.37" (9.4)	0.28" (7.1)
FPL12	3/4" NPT	0.922" (23.4)	10,000 PSI 690 bar	2.62" (66.5)	2.12" (53.8)	1.31" (33.3)	1.38" (35.1)	1.50" (38.1)	N/A	N/A	N/A
FPL16	1" NPT	0.687" (17.4)	10,000 PSI 690 bar	3.00" (76.2)	2.56" (65.0)	1.69" (42.9)	1.69" (42.9)	1.75" (44.5)	0.50" (12.7)	0.50" (12.7)	0.22" (5.6)

*Mounting hole provided when the catalog number is suffixed by "-MH" when ordering.

STREET ELBOW

Catalog		Block						
Number	Connection	Port	MAWP	A	B	C	D	Thickness
MSPL2	1/8" NPT	0.187" (4.7)	15,000 PSI 1030 bar	1.12" (28.4)	1.00" (25.4)	0.81" (20.6)	0.75" (19.1)	0.62" (15.7)
MSPL4	1/4" NPT	0.250" (6.4)	15,000 PSI 1030 bar	1.50" (38.1)	1.50" (38.1)	1.13" (28.7)	1.00" (25.4)	1.00" (25.4)
MSPL6	3/8" NPT	0.375" (9.5)	15,000 PSI 1030 bar	1.75" (44.5)	1.50" (38.1)	1.25" (31.8)	1.00" (25.4)	1.00" (25.4)
MSPL8	1/2" NPT	0.500" (12.7)	15,000 PSI 1030 bar	2.25" (57.2)	2.00" (50.8)	1.63" (41.4)	1.25" (31.8)	1.25" (31.8)
MSPL12	3/4" NPT	0.625" (15.9)	10,000 PSI 690 bar	2.50" (63.5)	2.62" (66.5)	1.75" (44.5)	1.31" (33.3)	1.50" (38.1)
MSPL16	1" NPT	0.687" (17.4)	10,000 PSI 690 bar	3.00" (76.2)	2.88" (73.2)	2.12" (53.8)	1.68" (42.7)	1.75" (44.5)

MALE ELBOW

Catalog		Block						
Number	Connection	Port	MAWP	A	B	C	D	Thickness
MPL2	1/8" NPT	0.187" (4.7)	15,000 PSI 1030 bar	1.00" (25.4)	1.13" (28.7)	0.75" (19.1)	0.81" (20.6)	0.62" (15.7)
MPL4	1/4" NPT	0.250" (6.4)	15,000 PSI 1030 bar	1.50" (38.1)	1.50" (38.1)	1.13" (28.7)	1.13" (28.7)	0.75" (19.1)
MPL6	3/8" NPT	0.375" (9.5)	15,000 PSI 1030 bar	1.75" (44.5)	1.75" (44.5)	1.25" (31.8)	1.25" (31.8)	1.00" (25.4)
MPL8	1/2" NPT	0.500" (12.7)	15,000 PSI 1030 bar	2.00" (50.8)	2.00" (50.8)	1.50" (38.1)	1.50" (38.1)	1.00" (25.4)
MPL12	3/4" NPT	0.625" (15.9)	10,000 PSI 690 bar	2.62" (66.5)	2.62" (66.5)	1.75" (44.5)	1.75" (44.5)	1.50" (38.1)
MPL16	1" NPT	0.687" (17.4)	10,000 PSI 690 bar	3.00" (76.2)	3.00" (76.2)	2.13" (54.1)	2.13" (54.1)	1.75" (44.5)

All dimensions are for reference only and are subject to change.
Dimensions in parentheses are millimeters (mm)