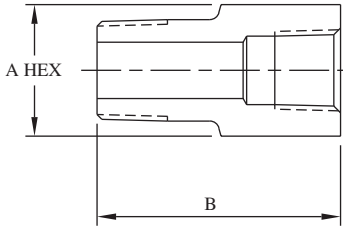


PIPE ADAPTERS



Catalog Number	Male NPT	Female NPT	Port	MAWP	A	B
10A2P4P	1/8"	1/4"	0.187" (4.7)	15,000 PSI 1030 bar	0.75" (19.1)	1.38" (35.1)
10A2P6P	1/8"	3/8"	0.187" (4.7)	15,000 PSI 1030 bar	1.00" (25.4)	1.56" (39.6)
10A2P8P	1/8"	1/2"	0.187" (4.7)	15,000 PSI 1030 bar	1.38" (35.1)	1.56" (39.6)
10A2P12P	1/8"	3/4"	0.187" (4.7)	10,000 PSI 690 bar	1.38" (35.1)	2.12" (53.8)
10A2P16P	1/8"	1"	0.187" (4.7)	10,000 PSI 690 bar	1.75" (44.5)	2.25" (57.2)
10A4P2P	1/4"	1/8"	0.187" (4.7)	15,000 PSI 1030 bar	0.75" (19.1)	1.50" (38.1)
10A4P6P	1/4"	3/8"	0.250" (6.4)	15,000 PSI 1030 bar	0.88" (22.4)	1.75" (44.5)
10A4P8P	1/4"	1/2"	0.250" (6.4)	15,000 PSI 1030 bar	1.38" (35.1)	1.75" (44.5)
10A4P12P	1/4"	3/4"	0.250" (6.4)	10,000 PSI 690 bar	1.38" (35.1)	2.25" (57.2)
10A4P16P	1/4"	1"	0.250" (6.4)	10,000 PSI 690 bar	1.75" (44.5)	2.38" (60.5)
10A6P2P	3/8"	1/8"	0.339" (8.6)	15,000 PSI 1030 bar	0.88" (22.4)	1.50" (38.1)
10A6P4P	3/8"	1/4"	0.375" (9.5)	15,000 PSI 1030 bar	0.88" (22.4)	1.62" (41.1)
10A6P8P	3/8"	1/2"	0.375" (9.5)	15,000 PSI 1030 bar	1.38" (35.1)	2.00" (50.8)
10A6P12P	3/8"	3/4"	0.375" (9.5)	10,000 PSI 690 bar	1.38" (35.1)	2.00" (50.8)
10A6P16P	3/8"	1"	0.375" (9.5)	10,000 PSI 690 bar	1.75" (44.5)	2.56" (65.0)

Catalog Number	Male NPT	Female NPT	Port	MAWP	A	B
10A8P2P	1/2"	1/8"	0.339" (8.6)	15,000 PSI 1030 bar	1.00" (25.4)	1.75" (44.5)
10A8P4P	1/2"	1/4"	0.250" (6.4)	15,000 PSI 1030 bar	1.00" (25.4)	1.81" (46.0)
10A8P6P	1/2"	3/8"	0.500" (12.7)	15,000 PSI 1030 bar	1.00" (25.4)	2.00" (50.8)
10A8P12P	1/2"	3/4"	0.500" (12.7)	10,000 PSI 690 bar	1.38" (35.1)	2.50" (63.5)
10A8P16P	1/2"	1"	0.500" (12.7)	10,000 PSI 690 bar	1.75" (44.5)	2.25" (57.2)
10A12P2P	3/4"	1/8"	0.339" (8.6)	10,000 PSI 690 bar	1.13" (28.7)	1.51" (38.4)
10A12P4P	3/4"	1/4"	0.437" (11.1)	10,000 PSI 690 bar	1.13" (28.7)	1.51" (38.4)
10A12P6P	3/4"	3/8"	0.578" (14.7)	10,000 PSI 690 bar	1.13" (28.7)	2.00" (50.8)
10A12P8P	3/4"	1/2"	0.625" (15.9)	10,000 PSI 690 bar	1.38" (35.1)	2.00" (50.8)
10A12P16P	3/4"	1"	0.625" (15.9)	10,000 PSI 690 bar	1.75" (44.5)	2.56" (65.0)
10A16P2P	1"	1/8"	0.339" (8.6)	10,000 PSI 690 bar	1.38" (35.1)	2.00" (50.8)
10A16P4P	1"	1/4"	0.250" (6.4)	10,000 PSI 690 bar	1.38" (35.1)	1.88" (47.8)
10A16P6P	1"	3/8"	0.578" (14.7)	10,000 PSI 690 bar	1.38" (35.1)	2.25" (57.2)
10A16P8P	1"	1/2"	0.500" (12.7)	10,000 PSI 690 bar	1.38" (35.1)	2.37" (60.2)
10A16P12P	1"	3/4"	0.625" (15.9)	10,000 PSI 690 bar	1.38" (35.1)	2.75" (69.9)

All dimensions are for reference only and are subject to change.
Dimensions in parentheses are millimeters (mm)

