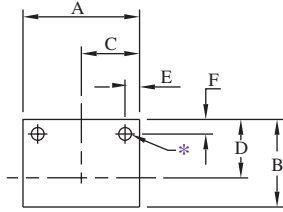
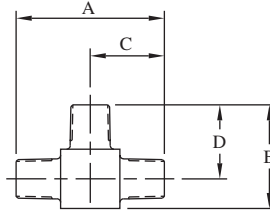


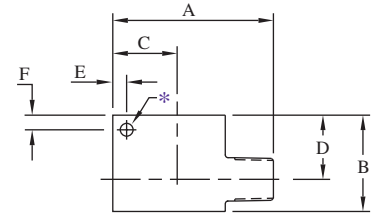
PIPE TEES



Female Tee



Male Tee



Male Street Tee

FEMALE TEES

Catalog Number	Connection	Port	MAWP	A	B	C	D	Block Thickness	Mounting Holes*		
									E	F	Dia.
FPT2	1/8" NPT	0.187" (4.7)	15,000 PSI 1030 bar	1.50" (38.1)	1.00" (25.4)	0.75" (19.1)	0.62" (15.7)	0.62" (15.7)	0.25" (6.4)	0.20" (5.1)	0.22" (5.6)
FPT4	1/4" NPT	0.437" (11.1)	15,000 PSI 1030 bar	2.00" (50.8)	1.25" (31.8)	1.00" (25.4)	0.81" (20.6)	0.75" (19.1)	0.38" (9.7)	0.25" (6.4)	0.22" (5.6)
FPT6	3/8" NPT	0.375" (9.5)	15,000 PSI 1030 bar	2.00" (50.8)	1.50" (38.1)	1.00" (25.4)	1.00" (25.4)	1.00" (25.4)	0.25" (6.4)	0.25" (6.4)	0.22" (5.6)
FPT8	1/2" NPT	0.500" (12.7)	15,000 PSI 1030 bar	2.50" (63.5)	1.75" (44.5)	1.25" (31.8)	1.25" (31.8)	1.25" (31.8)	0.38" (9.7)	0.38" (9.7)	0.28" (7.1)
FPT12	3/4" NPT	0.922" (23.4)	10,000 PSI 690 bar	2.62" (66.5)	2.12" (53.8)	1.31" (33.3)	1.38" (35.1)	1.50" (38.1)	N/A	N/A	N/A
FPT16	1" NPT	0.687" (17.4)	10,000 PSI 690 bar	3.38" (85.9)	2.56" (65.0)	1.69" (42.9)	1.69" (42.9)	1.75" (44.5)	0.50" (12.7)	0.50" (12.7)	0.22" (5.6)

MALE TEES

Catalog Number	Connection	Port	MAWP	A	B	C	D	Block Thickness	Mounting Holes*		
									E	F	Dia.
MPT2	1/8" NPT	0.187" (4.7)	15,000 PSI 1030 bar	1.50" (38.1)	1.13" (28.7)	0.75" (19.1)	0.81" (20.6)	0.62" (15.7)	N/A	N/A	N/A
MPT4	1/4" NPT	0.250" (6.4)	15,000 PSI 1030 bar	2.25" (57.2)	1.50" (38.1)	1.13" (28.7)	1.13" (28.7)	0.75" (19.1)	0.25" (6.4)	0.37" (9.4)	0.22" (5.6)
MPT6	3/8" NPT	0.375" (9.5)	15,000 PSI 1030 bar	2.50" (63.5)	1.75" (44.5)	1.25" (31.8)	1.25" (31.8)	1.00" (25.4)	N/A	N/A	N/A
MPT8	1/2" NPT	0.500" (12.7)	15,000 PSI 1030 bar	3.00" (76.2)	2.00" (50.8)	1.50" (38.1)	1.50" (38.1)	1.00" (25.4)	0.37" (9.4)	0.37" (9.4)	0.34" (8.6)
MPT12	3/4" NPT	0.625" (15.9)	10,000 PSI 690 bar	3.50" (88.9)	2.62" (66.5)	1.75" (44.5)	1.75" (44.5)	1.50" (38.1)	0.37" (9.4)	0.37" (9.4)	0.34" (8.6)
MPT16	1" NPT	0.687" (17.4)	10,000 PSI 690 bar	4.25" (108.0)	3.00" (76.2)	2.13" (54.1)	2.13" (54.1)	1.75" (44.5)	0.50" (12.7)	0.50" (12.7)	0.34" (8.6)

MALE STREET TEES

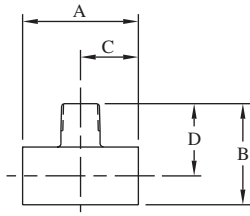
Catalog Number	Connection	Port	MAWP	A	B	C	D	Block Thickness	Mounting Holes*		
									E	F	Dia.
MSPT2	1/8" NPT	0.187" (4.7)	15,000 PSI 1030 bar	1.50" (38.1)	1.12" (28.4)	0.63" (16.0)	0.75" (19.1)	0.62" (15.7)	N/A	N/A	N/A
MSPT4	1/4" NPT	0.250" (6.4)	15,000 PSI 1030 bar	2.00" (50.8)	1.37" (34.8)	0.81" (20.6)	1.00" (25.4)	0.75" (19.1)	0.25" (6.4)	0.37" (9.4)	0.22" (5.6)
MSPT6	3/8" NPT	0.375" (9.5)	15,000 PSI 1030 bar	2.50" (63.5)	1.50" (38.1)	1.00" (25.4)	1.00" (25.4)	1.00" (25.4)	N/A	N/A	N/A
MSPT8	1/2" NPT	0.500" (12.7)	15,000 PSI 1030 bar	2.75" (69.9)	1.75" (44.5)	1.25" (31.8)	1.25" (31.8)	1.25" (31.8)	0.37" (9.4)	0.37" (9.4)	0.34" (8.6)
MSPT12	3/4" NPT	0.625" (15.9)	10,000 PSI 690 bar	3.12" (79.2)	2.62" (66.5)	1.38" (35.1)	1.31" (33.3)	1.50" (38.1)	0.37" (9.4)	0.37" (9.4)	0.34" (8.6)
MSPT16	1" NPT	0.687" (17.4)	10,000 PSI 690 bar	4.25" (108.0)	3.00" (76.2)	2.13" (54.1)	2.13" (54.1)	1.75" (44.5)	0.50" (12.7)	0.50" (12.7)	0.34" (8.6)

*Mounting holes provided when the catalog number is suffixed by "-MH" when ordering.

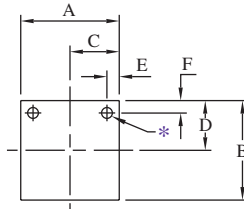
All dimensions are for reference only and are subject to change.
Dimensions in parentheses are millimeters (mm)



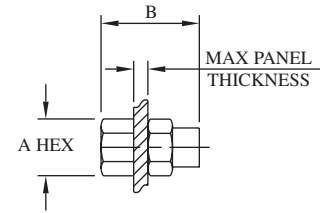
PIPE TEES, CROSSES AND BULKHEADS



Male Branch Tee



Female Cross



See bulkhead table below for panel hole drill size

MALE BRANCH TEES

Catalog Number	Connection	Port	MAWP	A	B	C	D	Block Thickness
MBPT2	1/8" NPT	0.187" (4.7)	15,000 PSI 1030 bar	1.50" (38.1)	1.13" (28.7)	0.75" (19.1)	0.81" (20.6)	0.62" (15.7)
MBPT4	1/4" NPT	0.250" (6.4)	15,000 PSI 1030 bar	2.00" (50.8)	1.50" (38.1)	1.00" (25.4)	1.13" (28.7)	1.00" (25.4)
MBPT6	3/8" NPT	0.375" (9.5)	15,000 PSI 1030 bar	2.00" (50.8)	1.75" (44.5)	1.00" (25.4)	1.25" (31.8)	1.00" (25.4)
MBPT8	1/2" NPT	0.500" (12.7)	15,000 PSI 1030 bar	2.50" (63.5)	2.25" (57.2)	1.25" (31.8)	1.63" (41.4)	1.25" (31.8)
MBPT12	3/4" NPT	0.625" (15.9)	10,000 PSI 690 bar	2.62" (66.5)	2.50" (63.5)	1.31" (33.3)	1.75" (44.5)	1.50" (38.1)
MBPT16	1" NPT	0.687" (17.4)	10,000 PSI 690 bar	3.37" (85.6)	3.00" (76.2)	1.69" (42.9)	2.13" (54.1)	1.75" (44.5)

FEMALE CROSSES

Catalog Number	Connection	Port	MAWP	A	B	C	D	Block Thickness	Mounting Holes*		
									E	F	Dia.
FPX2	1/8" NPT	0.187" (4.7)	15,000 PSI 1030 bar	1.50" (38.1)	1.50" (38.1)	0.75" (19.1)	0.75" (19.1)	0.62" (15.7)	0.25" (6.4)	0.25" (6.4)	0.22" (5.6)
FPX4	1/4" NPT	0.250" (6.4)	15,000 PSI 1030 bar	2.00" (50.8)	2.00" (50.8)	1.00" (25.4)	1.00" (25.4)	0.75" (19.1)	0.38" (9.7)	0.25" (6.4)	0.22" (5.6)
FPX6	3/8" NPT	0.375" (9.5)	15,000 PSI 1030 bar	2.00" (50.8)	2.00" (50.8)	1.00" (25.4)	1.00" (25.4)	1.00" (25.4)	0.25" (6.4)	0.25" (6.4)	0.22" (5.6)
FPX8	1/2" NPT	0.500" (12.7)	15,000 PSI 1030 bar	2.50" (63.5)	2.50" (63.5)	1.25" (31.8)	1.25" (31.8)	1.25" (31.8)	0.38" (9.7)	0.38" (9.7)	0.28" (7.1)
FPX12	3/4" NPT	0.922" (23.4)	10,000 PSI 690 bar	2.62" (66.5)	2.75" (69.9)	1.31" (33.3)	1.38" (35.1)	1.50" (38.1)	N/A	N/A	N/A
FPX16	1" NPT	0.687" (17.4)	10,000 PSI 690 bar	4.12" (104.6)	4.12" (104.6)	2.06" (52.3)	2.06" (52.3)	1.75" (44.5)	N/A	N/A	N/A

*Mounting holes provided when the catalog number is suffixed by "-MH" when ordering.

BULKHEADS

Catalog Number	Connection	Port	MAWP	A	B	Panel Hole	Panel Thickness
FPBF2	1/8" NPT	0.339" (8.6)	15,000 PSI 1030 bar	1.00" (25.4)	2.00" (50.8)	0.81" (20.6)	0.38" (9.7)
FPBF4	1/4" NPT	0.437" (11.1)	15,000 PSI 1030 bar	1.00" (25.4)	2.00" (50.8)	0.94" (23.9)	0.38" (9.7)
FPBF6	3/8" NPT	0.578" (14.7)	15,000 PSI 1030 bar	1.37" (34.8)	2.62" (66.5)	1.25" (31.8)	0.50" (12.7)
FPBF8	1/2" NPT	0.703" (17.9)	15,000 PSI 1030 bar	1.50" (38.1)	2.62" (66.5)	1.37" (34.8)	0.50" (12.7)
FPBF12	3/4" NPT	0.625" (15.9)	10,000 PSI 690 bar	1.88" (47.8)	2.62" (66.5)	1.69" (42.9)	0.50" (12.7)
FPBF16	1" NPT	0.687" (17.4)	10,000 PSI 690 bar	2.12" (53.8)	3.50" (88.9)	1.94" (49.3)	0.50" (12.7)

All dimensions are for reference only and are subject to change.
Dimensions in parentheses are millimeters (mm)