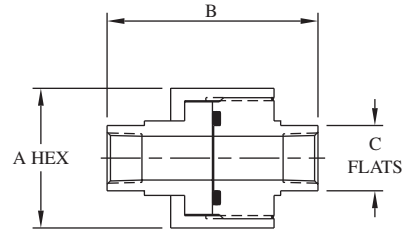


PIPE ACCESSORIES

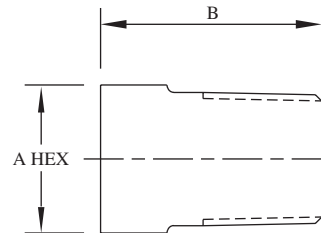
ZERO-CLEARANCE UNIONS

Catalog						
Number	Connection	Port	MAWP	A	B	C
FPUF2	1/8" NPT	0.339" (8.6)	15,000 PSI 1030 bar	1.50" (38.1)	2.38" (60.5)	0.62" (15.7)
FPUF4	1/4" NPT	0.437" (11.1)	15,000 PSI 1030 bar	1.75" (44.5)	2.56" (65.0)	0.75" (19.1)
FPUF6	3/8" NPT	0.578" (14.7)	15,000 PSI 1030 bar	1.87" (47.5)	2.83" (71.9)	0.87" (22.1)
FPUF8	1/2" NPT	0.703" (17.9)	15,000 PSI 1030 bar	1.87" (47.5)	2.83" (71.9)	1.00" (25.4)
FPUF12	3/4" NPT	0.921" (23.4)	10,000 PSI 690 bar	2.12" (53.8)	3.12" (79.2)	1.38" (35.1)



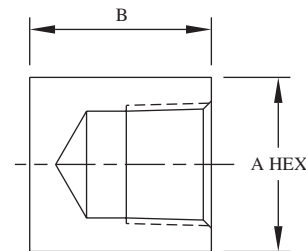
PLUGS

Catalog				
Number	Connection	MAWP	A	B
MPP2	1/8" NPT	15,000 PSI 1030 bar	0.50" (12.7)	1.00" (25.4)
MPP4	1/4" NPT	15,000 PSI 1030 bar	0.63" (16.0)	1.12" (28.4)
MPP6	3/8" NPT	15,000 PSI 1030 bar	0.75" (19.1)	1.12" (28.4)
MPP8	1/2" NPT	15,000 PSI 1030 bar	1.00" (25.4)	1.50" (38.1)
MPP12	3/4" NPT	10,000 PSI 690 bar	1.38" (35.1)	1.50" (38.1)
MPP16	1" NPT	10,000 PSI 690 bar	1.38" (35.1)	1.88" (47.8)



CAPS

Catalog				
Number	Connection	MAWP	A	B
FPCA2	1/8" NPT	15,000 PSI 1030 bar	0.63" (16.0)	0.75" (19.1)
FPCA4	1/4" NPT	15,000 PSI 1030 bar	0.75" (19.1)	1.00" (25.4)
FPCA6	3/8" NPT	15,000 PSI 1030 bar	1.00" (25.4)	1.00" (25.4)
FPCA8	1/2" NPT	15,000 PSI 1030 bar	1.38" (35.1)	1.25" (31.8)
FPCA12	3/4" NPT	10,000 PSI 690 bar	1.38" (35.1)	1.50" (38.1)
FPCA16	1" NPT	10,000 PSI 690 bar	1.75" (44.5)	1.68" (42.7)



All dimensions are for reference only and are subject to change.
Dimensions in parentheses are millimeters (mm)

