



FJ182BR

**GVW 19
TONNE**



READY TO SET THE NEW STANDARD



200,000km
OR
5 YEARS WARRANTY***
LIGHT DUTY TRUCKS

FREE
maintenance service
4 TIMES

B20
Diesel
Compatible



History of FUSO

F U S O

FJ182BR

The brand name FUSO was originally used in 1932. FUSO is the Japanese pronunciation of "fusang," an old Chinese word referring to the "sun's origin," or, Japan.

FUSO have more than 80 years of experience as an international truck and bus manufacturer. Owing to its experience, collected over decades, the FUSO headquarters in Kawasaki in Japan is also Daimler's global development center for hybrid technology.

FUSO is well known for its trusted quality, economic efficiency, solid & functional design and committed services. It is the leading Japanese brand across many markets, known for its track record of technological innovations and high customer satisfaction based on the lowest total cost of ownership.

As one of the leading commercial vehicles manufacturer in the world, FUSO produces light, medium and heavy-duty trucks for a wide range of operating conditions, excelling in fuel efficiency and robustness while boasting outstanding payload and ride comfort.

1932-1955

1963-1984

2007-2010

2012-2019



1932

The first FUSO, a 100PS Mitsubishi B46 gasoline engine bus.



1963

T720 "Canter" light-duty cab-over truck is launched.



2007

Launch of FUSO Prime Mover FP517D in Malaysia.



2012

Launch of FUSO FG 4x4 in Malaysia



1951

W11 4-ton tow truck is produced.



1977

"FS119S" heavy-duty low bed truck is launched.



2009

Launch of FUSO FN67M (6x4) in Malaysia.



2015

Launch of FUSO FM/ FN series in Malaysia.



1955

T33 8-ton, Japan's first genuine heavy-duty truck, is produced.



1984

"Fighter", medium-duty truck is launched.



2010

"Canter" light-duty truck undergoes full model change.



2019

Launch of FUSO FJ1828R in Malaysia.

Innovations

E-FUSO Vision One

As the world move towards “Go Green” & “Environmental Friendly”, FUSO underlined its commitment to electrify its complete range of products in the coming years. After eCanter, the world’s first fully electric series-produced light-duty truck for urban distribution which already on roads around the world, FUSO launched the concept E-FUSO Vision One.

The E-FUSO Vision One is an all-electric heavy-duty truck concept, has a gross vehicle weight (GVW) of about 23 tons and carries a payload of approximately 11 tons. With batteries performing at up to 300 kilowatt hours and with a range of up to 350 kilometers, the E-FUSO Vision One marks the top end of the company’s electric truck portfolio.

Given growing customer interest, infrastructure development and regulatory efforts to spur the electrification of road transport, FUSO expects high customer interest in an electric heavy-duty truck in the near future.



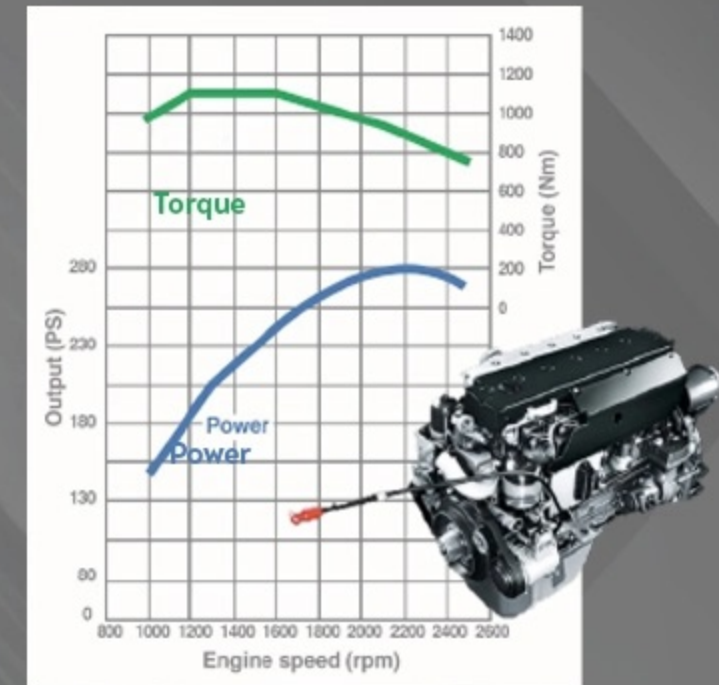
FJ1828R ENGINE & TRANSMISSION

Engine

6S20 6.4L Engine



The heavy duty engine from FUSO that combines performance with efficiency. It produces highest torque in its segment, 1100Nm and flat torque from 1200rpm, to allow easy heavy load pulling with little effort and better fuel efficiency.



Tested Fuel Consumption

With proven fuel efficiency, tested result at 4.6km/l by reputable test house
Scan QR to view fuel consumption test video

Unit Pump Injection System

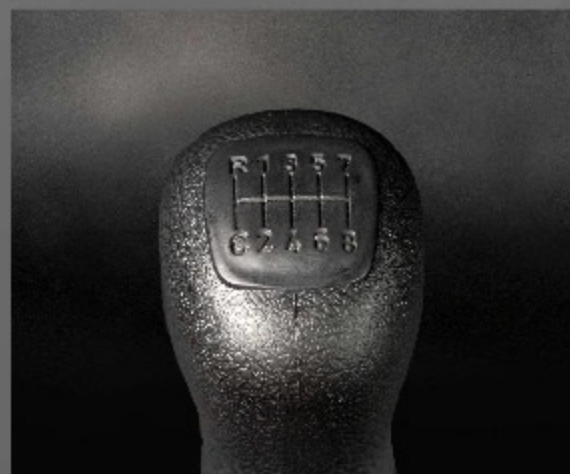
Individual fuel injection pump at each cylinder ensure precise fuel quantity is delivered at high pressure, delivering unmatched fuel efficiency.



Transmission

Mercedes-Benz 9-Speed Transmission

Durable and reliable transmission with double-synchro for faster gear shift with less effort, reducing driving fatigue and maintaining higher efficiency.



EXTERIOR (FRONT)



01. Sleek & Aerodynamic Cabin

Sleek design of the cabin shape gives it a powerful yet modern look while the aerodynamically shaped front and rear quarter panels allows smoother air flow, improving fuel economy.



02. Parabolic Front Suspension

Standard front spring for FJ1828R, parabolic spring improves ride comfort and improves ride comfort and durability.



03. Easy-Open Front Flap

Easy access to crucial checking points such as clutch fluid, radiator coolant level, engine oil level & etc, for maintenance.



04. Wipers with Integrated Washer Nozzle

Uses minimal water as integrated nozzle sprays water along wiper during cleaning, reducing water splash making it more effective and improving safety during driving.



05. LED Daytime Running Light (DRL)

Bright LED DRL for better vehicle visibility and road awareness, translating to better safety for other road users.



06. Fully Suspended Cabin

For better ride comfort and improve drive quality.

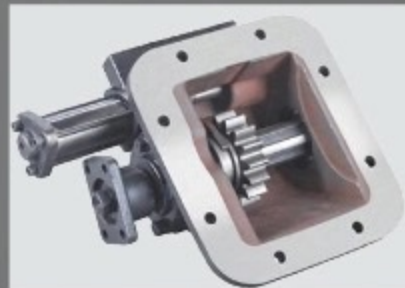


EXTERIOR (REAR)



07. Power Take Off (PTO)*

Factory fitted on the 5,100mm wheelbase variant as standard to facilitate special rear body application while ensuring compatibility with FUSO transmission for long term reliability.



08. Clutch Wear Indicator

Easy-to-see clutch wear indicator helps reduce downtime and ensure full utilisation of clutch lining life.



09. Wide Door Opening

Large door opening provides easy entry to cabin.



10. Engine & Exhaust Brake

Experience higher braking performance and fuel efficiency through unique engine and exhaust brake combination.



11. FUSO Super Frame & Heavy Duty Frame

The FUSO highly robust Super Frame structure is built to last and to carry heavy loads plus withstand rough road conditions. The heavy duty reinforced frame for increased vehicle stability and load bearing ability.



*Only for FJ1828R SWB



12. Practical Cabin Storage

Plenty of storage space in cabin, ensuring high level of productivity and practicality.



13. Cruise control & speed limiter

Improve fuel efficiency with first in class cruise control & speed limiter by minimizing throttle changes and reducing driving fatigue.





14. Differential Lock

Improve traction when on slippery road condition with differential lock with switch located within easy reach of drivers.



15. Spacious & ergonomic cabin design

Simple & highly practical cabin with ergonomic arrangement of switches and levers.



INTERIOR



16. LCD Intelligent Instrument Cluster with ECO meter display

LED intelligent instrument cluster provides vital information at a glance such as trip mileage, neutral and reverse gear indication, fuel consumption, range, etc. Eco meter indicator gives indication to the driver on the correct gear and speed for optimum fuel efficiency.



17. Air suspended driver seat

3-way adjustable air suspended seats help drivers to find the best driving position & reduce fatigue on bumpy and long distance driving.





18. Foldable bunk bed

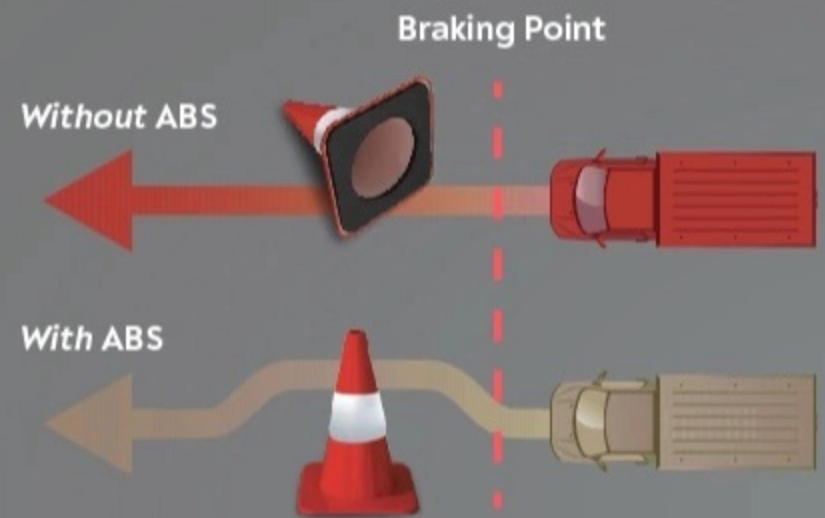
Wide berth bunk bed enhances rest and sleep for better productivity and safety.



Safety Feature

Anti-lock Braking System (ABS)

The advanced ABS (anti-lock braking system) and automatic brake adjuster provide optimal control of your truck during emergency braking situations and enable proper steering around obstacles.



Wider, Thicker Brake Lining

With wider and thicker brake lining, FJ1828R reduces stopping distance and provides longer brake liner life for higher productivity.

Front & Rear Stabilizer

Improve vehicle stability and road grip especially during cornering and high speeds.



Reverse Sensors

Alerts driver if there is any objects or people within rear proximity when reversing, protecting the vehicle, property and road users.

REAR ADSSIDE ASSISTANCE

SERVICE PACKAGE & WARRANTY



Warranty Coverage & Service

Offer 3 years warranty coverage or up to 200,000km.

FUSO free maintenance help reduce business operational cost with 4 times free service. 4 times free maintenance is inclusive of oil filter & labour as per recommended in service booklet.

Higher uptime with 25,000km service interval.

200,000km*
OR
3 YEARS WARRANTY
MEDIUM DUTY TRUCKS

FREE
maintenance service
4 TIMES

25,000km
Service interval

FUSO Roadside Assistance

Our call centre is open 24 hours, 7 days a week for any emergency or support required to keep your business and truck running. Your needs are our priority!

 **R^{24/7}ADSIDE ASSISTANCE**
FUSO 03 8082 9188



FUSO Genuine Parts gives you optimal performance and safety at all times



Team of experts at your service

* Terms & conditions apply

MULTI APPLICATIONS

Customizable Body Length



MODEL	BODY LENGTH					
	STANDARD	OPTION 1	OPTION 2	OPTION 3	OPTION 4	OPTION 5
	27.2ft / 8.2m	20.0ft / 6.1m	22.0ft / 6.7m	24.0ft / 7.3m	30.0ft / 9.1m	32.9ft / 10.0m
FJ1828R LWB (6000mm)	✓	✓	✓	✓	✓	✓
FJ1828R SWB (5100mm)	22.8ft / 6.9m	21.5ft / 6.5m	25.2ft / 7.6m	26.7ft / 8.1m		
	✓	✓	✓	✓		

We provide various customisable body applications for your logistic needs. Find out more by contacting us to discuss your ideal needs.

Other Applications



Curtain Sider



Compactor *



Refridgerated Box



Cargo Crane*



Box Van



Fixed Side Cargo



General Cargo



Tipper / Dumper*



RORO (Roll-on Roll-off)*



Tanker

* Recommended for FJ1828R SWB

SPECIFICATIONS

TECHNICAL SPECIFICATION

FJ1828R

MODEL R.H.D		FJ1828R		
Drive Configuration		-	4x2	
WEIGHT	Max G.V.W	kg	19,000	
	Front axle	kg	4,063	
	Rear axle	kg	2,347	
DIMENSIONS	Kerb weight approx.	kg	6,410	
	Wheelbase (W.B.)	mm	5,100	
	Overall length (O.A.L.)	mm	9,060	
	Overall width (O.A.W.)	mm	2,490	
	Overall height (O.A.H.)	mm	2,910	
	Tread	Front (T.F.)	mm	2,045
		Rear (T.R.)	mm	1,805
	Cab to rear axle (C.A.)	mm	4,420	
	Frame width (F.W.)	mm	760	
	Front overhang (F.O.H.)	mm	1,460	
Rear overhang (R.O.H.)	mm	2,500		
ENGINE	Model	-	6S20	
	Type	-	4-Stroke, Water-Cooled, Direct Injection With Unitized Injection Pump, Turbocharged Intercooled	
	No. of cylinders	-	6 Inline	
	Piston displacement	cc	6,373	
	Max. output	kW(PS) @ rpm	205 (280) @ 2,200	
	Max. torque	Nm @ rpm	1,100 @ 1,200-1,600	
	Air cleaner	-	Dry Twin Stage Paper Element	
	Alternator	-	24V - 80A	
	DRIVELINE	Clutch	Type	Hydraulic Control With Servo Assistance, Single Dry Plate
mm			395	
Transmission		-	Mercedes-Benz G131	
		P.T.O.	9 Forward and 1 Reverse with Crawler Gear, Manual, Synchromesh, Direct Drive	
Gear ratios		-	Equipped	
		-	Gear 1st - 8th : 9.478, 6.635, 4.821, 3.667, 2.585, 1.810, 1.315 & 1.000	
Final reduction gear		-	Reverse 13.862 & Crawler 14.573	
Ratio	-	Single Reduction, Hypoid Gear		
CABIN	Seating capacity	-	4.300	
	Cabin tilt	-	3	
	Power windows	-	Manual Hydraulic	
	Central lock & alarm system	-	Equipped	
	Reverse sensors & buzzer	-	Equipped	
	Cruise control & speed limiter	-	Equipped	
CHASSIS	Axle type	Front	Reverse Elliot, "I" beam type	
		Rear	Full Floating Type With Differential Lock	
	Rims & Tyres	Rims	8.25 x 22.5	
		Tyres	295/80R22.5	
	Steering	-	Hydraulic Power Assisted, Telescopic And Tilt Steering Column With Steering Lock	
	Suspension	Front	Parabolic Leaf Spring With Double Acting Shock Absorber And Stabiliser	
		Rear	Semi Elliptical Multileaf Spring With Stabiliser	
	Brake	Service	Drum Brake, Full Air, Dual Circuit With Antilock Brake System (ABS) & Auto Brake Shoes Adjuster	
		Auxiliary	Engine & Exhaust	
		Parking	Air Operated Spring Brake Acting On Rear Axle	
Fuel Tank	-	265L Steel With Lockable Fuel Cap & Built-In Anti Theft Mesh		
Electrical system	-	12 Volt x 2, 120Ah		

A CANTER FOR EVERY NEED

Light-Duty Series



FE71PB



110PS
5MT



4.8T



4x2



2500mm*

Engine 3,908cc
Max Torque 275Nm@1,600rpm



FE85PE



136PS
5MT



7.5T



4x2



3350mm*

Engine 3,908cc
Max Torque 370Nm@1,600rpm



FE85PG



136PS
5MT



7.5T



4x2



3850mm*

Engine 3,908cc
Max Torque 370Nm@1,600rpm



FG83PE



110PS
5MT



5.0T



4x4



3460mm*

Engine 3,908cc
Max Torque 275Nm@1,600rpm

*Multiple wheelbases available

TRUCKS TO FULFILL YOUR EVERY NEED

Medium-Duty Series



FM65FJ



240PS
5MT



18.0T



4x2



4620mm*

Engine 7,545cc
Max Torque 686Nm@1,400rpm



FM65FN



270PS
6MT



18.0T



4x2



5850mm*

Engine 7,545cc
Max Torque 785Nm@1,400rpm



FJ1828R



280PS
9MT



19.0T



4x2



5100mm*
6000mm

Engine 6,373cc
Max Torque 1,100Nm@1,200rpm-
1,600rpm

Heavy-Duty Series



FN62FM



270PS
9MT



25.0T



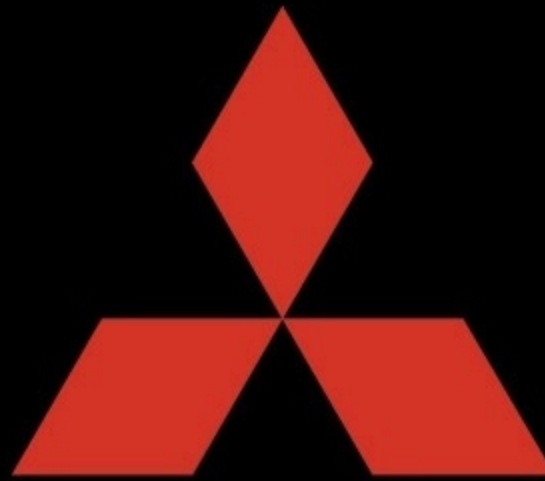
6x4



4140mm +
1320mm

Engine 7,545cc
Max Torque 785Nm@1,400rpm

*Multiple wheelbases available



FUSO

mitsubishi FUSO Authorised Distributor:

Hap Seng Trucks Distribution Sdn Bhd 201701036472 (1250643-T)

No. 1, Jalan Kinrara 2, Taman Perindustrian Bandar Kinrara, 47180 Puchong, Selangor, Malaysia.

 03-8082 9120  03-8082 9121  www.fuso.my   Fuso Malaysia