

# **JAC Forklift -** **Lithium-ion** **Series**

---

**SMARTER . STRONGER .**  
**ELECTRIC . BETTER .**



# The Company

JAC Material Handling Sdn Bhd is the exclusive distributor of JAC forklifts in Malaysia. The company specialises in energy-efficient and lithium-powered equipment designed for modern logistics and industrial operations.

As part of Anhui Jianghuai Automobile Group Corp., Ltd. (JAC), it delivers globally backed solutions adapted to local industry requirements.

## Brand Heritage

Founded in 1964 and listed on the Shanghai Stock Exchange (600418) in 2001, JAC is a comprehensive automobile enterprise group with capabilities spanning commercial vehicles, passenger vehicles, and advanced powertrain development. With a strong focus on energy-efficient and new energy technologies, JAC has established itself as one of China's leading automotive brands and a key high-tech enterprise.

## Versatile Solutions

Backed by over 40 years of forklift research and development, JAC solutions are built with precision manufacturing, advanced production technology, and strict quality control systems.

## Engineering Excellence

Supported by strong engineering expertise and advanced manufacturing capabilities, the range includes both indoor and heavy-duty electric forklifts, enabling efficient and reliable operations across various industries.

## Global Footprint, Local Support

JAC's global presence extends across more than 130 countries, supported by over 100 overseas service networks and multiple international production facilities. This global footprint ensures reliable product support, consistent quality, and continuous innovation, enabling businesses in Malaysia to benefit from internationally proven solutions with local expertise.



# The Commitment

We deliver more than equipment, we deliver confidence, performance and long-term value for your business.



## ESG-Ready Fleet

Our 100% electric lithium-ion forklifts eliminate toxic exhaust fumes, helping your facility meet sustainability targets and environmental compliance for a cleaner workspace.



## Rapid Breakdown Support

We provide prompt on-site technical support to resolve issues quickly and efficiently whenever needed. With readily available spare parts, we minimize downtime and ensure your operations continue without disruption.



## Proven Reliability

Built with industrial-grade components, our equipment delivers consistent performance in demanding warehouse and logistics environments. Engineered for durability and efficiency, it ensures reliable operation while keeping costs under control.



## Smart Ownership Options

We offer flexible ownership solutions including leasing, rental, and installment plans tailored to your business needs. This allows you to manage cash flow effectively while accessing the right equipment for your operations.



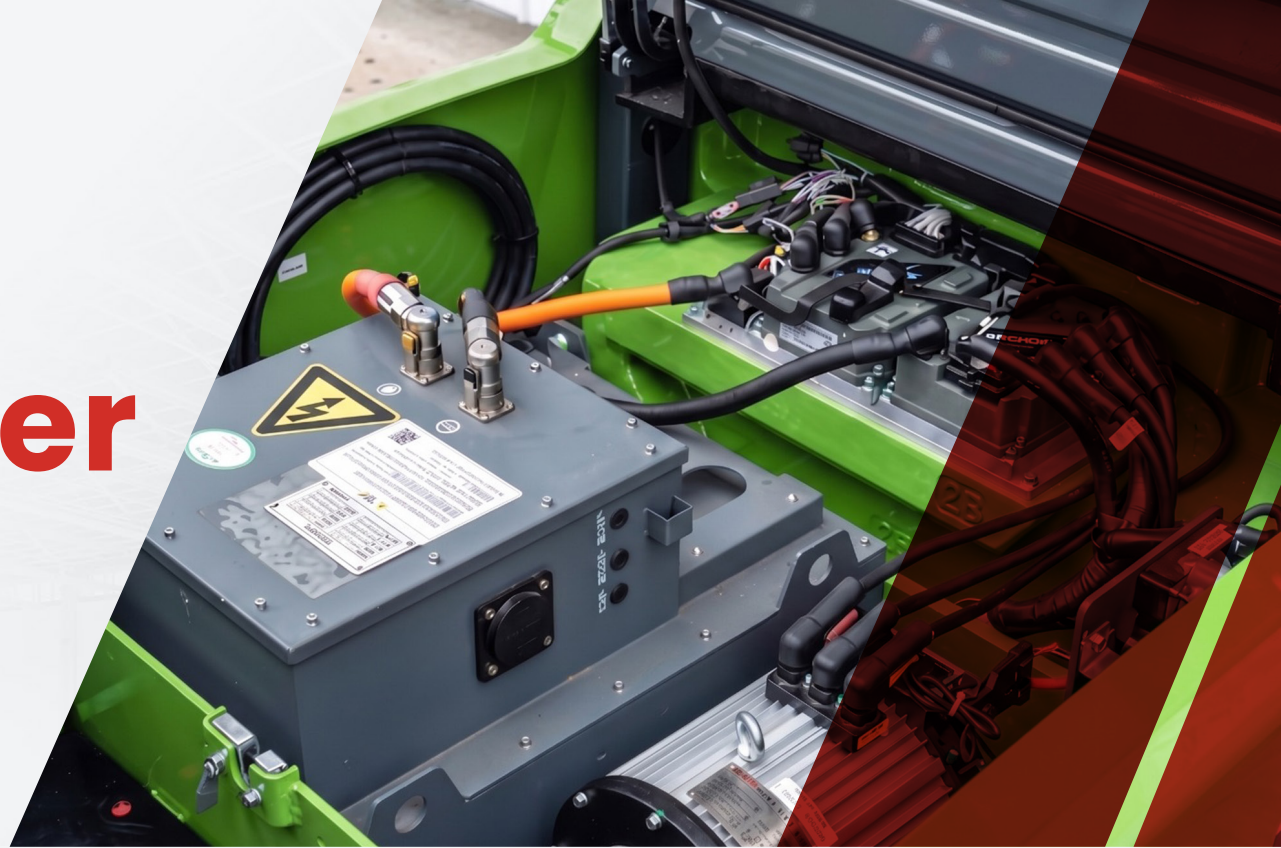
# JAC

# Lithium Power

## Intelligent Power. Precision Engineering

The heart of every JAC electric forklift is our advanced Lithium Iron Phosphate (LFP) battery system. Designed for high-demand, multi-shift logistics, this isn't just a battery – it is a complete intelligent power solution.

Integrated seamlessly with premium controllers, our lithium-ion technology delivers consistent lifting capacity and travel speeds. Experience uncompromising heavy-duty performance that transforms your operational efficiency.



## Smart Power Management

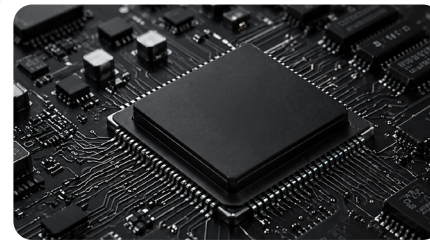
### Engineered with Premium Global Components

The reliability of a JAC electric forklift comes from what is inside. We combine the industry's most advanced power management systems into one seamless, heavy-duty drivetrain.



### Advanced LFP Cell Chemistry

We exclusively utilize Lithium Iron Phosphate (LFP) technology which provides the industry's highest thermal stability, ensuring the battery stays cool and safe even during heavy outdoor use in Malaysia's hot climate.



### Advance Intelligence Controllers

The intelligent control system is the brain of our operation. It actively communicates with the battery and the motor in real-time, translating high-voltage power into micro-precise hydraulic movements and perfectly smooth acceleration.

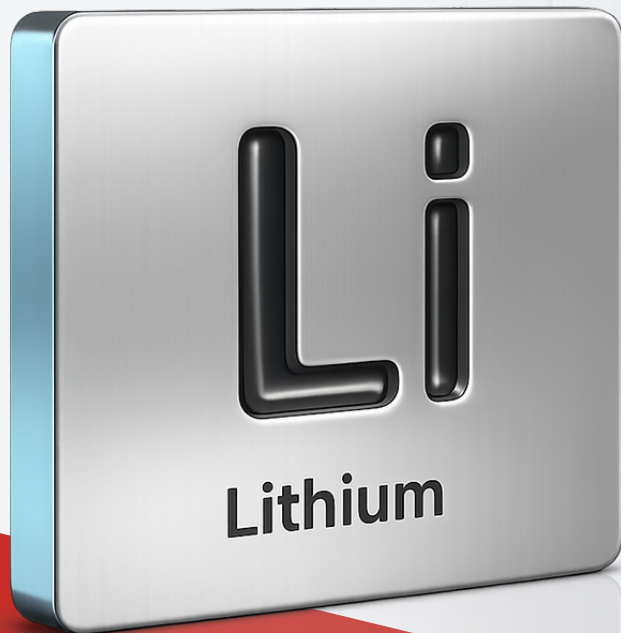


### Intelligent BMS (Battery Management System)

Our smart BMS acts as a 24/7 bodyguard for your power supply. It actively monitors the temperature, voltage, and health of every individual cell—automatically balancing the load to prevent overcharging, deep-discharging, and overheating.

# The Lithium Advantage

Switching to electric trucks is not just about technology – it is a strategic business decision.



## Superior Economic ROI

Switching to electric significantly lowers daily energy costs to accelerate your return on investment.



## Maintenance-Free Operation

Eliminating engine maintenance and battery watering drastically reduces labor costs and unexpected downtime.



## Rapid Opportunity Charging

Quick plug-ins during short breaks eliminate charging downtime to perfectly support continuous, multi-shift workflows.



## Exceptional Service Life

Our lithium technology significantly outlasts traditional diesel and lead-acid alternatives, maximizing your long-term asset value.



## Consistent Performance

The intelligent BMS automatically regulates power delivery to guarantee smooth, reliable operation, eliminating the inconsistencies of manual human control.



## Extreme Climate Reliability

The system is engineered to perform flawlessly everywhere, from hot outdoor logistics yards to freezing cold-storage facilities.



## Advanced Safety Systems

An intelligent 24/7 Battery Management System automatically monitors cell health to prevent overheating or overcharging.



## Clean & ESG-Compliant

Zero emissions and low operational noise create a safer workplace while fulfilling modern corporate sustainability targets.

# Electric vs Diesel

| Feature                 | JAC Lithium-Ion                          | Diesel  |
|-------------------------|--|---|
| <b>Emission</b>         | ✓ Zero emission                          | ✗ High CO <sub>2</sub> emission   |
| <b>Maintenance</b>      | ✓ Minimal (no engine, no oil)            | ✗ High (engine, filters, oil)   |
| <b>Operating Cost</b>   | ✓ Low (energy-efficient)                 | ✗ High (fuel + servicing)   |
| <b>Productivity</b>     | ✓ Consistent performance                 | ✗ Varies based on operator skill & fatigue<br>Performance varies with fuel/engine |
| <b>Environment</b>      | ✓ Clean and quiet                        | ✗ Loud engine noise and dirty   |
| <b>Lifespan</b>         | ✓ Longer battery life cycle              | ✗ Shorter engine lifecycle  |
| <b>Workplace Safety</b> | ✓ No fumes, safer indoor and outdoor use | ✗ Exhaust fumes & heat  |

# Our Lithium-Ion Series

CounterBalance Forklift

## HE Series



**Model:** CPD HE  
**Rated Load:**  
2000/2500/3000/3500/3800

## JE Series



**Model:** CPD JE  
**Rated Load:**  
5000

## L Series



**Model:** CPD L  
**Rated Load:**  
1500/1800/2000/2500

## Three Wheel



**Model:** CPD SA  
**Rated Load:**  
1600/1800/2000

# Our Lithium-Ion Series

Warehouse Trucks & Specialized Equipment

## Electric Reach Truck



**Model:** CQD  
**Operation type:** Seat / Stand  
**Rate Load:** 1500 / 2000

## Electric Reach Stacker



**Model:** CDD  
**Operation type:** Stand  
**Rate Load:** 1500 / 2000

## Electric Pallet Truck



**Model:** CBD  
**Operation type:** Stand / Walkie  
**Rate Load:** 1500 / 2000 / 2500 / 3000

## Electric Tractor



**Model:** QD  
**Operation type:** Seat / Stand  
**Rate Load:** 1500 / 2000

## Electric Platform Truck



**Model:** BDD  
**Operation type:** Stand  
**Rate Load:** 1500 / 2000

## Laser Guided AGV

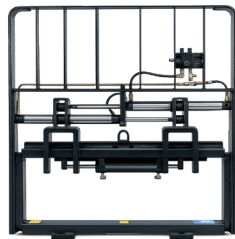


# Specialized Attachments & Industrial Solutions

**Side Shifter**



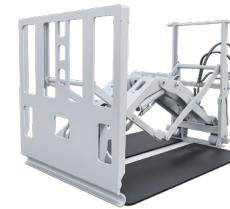
**Fork Positioner**



**Single-Double Pallet Handler**



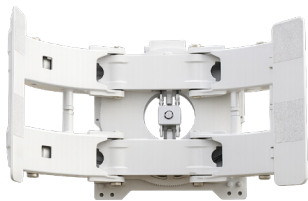
**Quick-Installed Push-Pull**



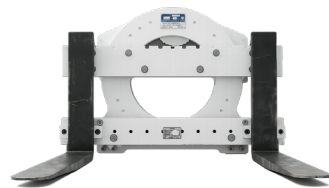
**Bale Clamp**



**Paper Roll Clamp**



**Rotator**



**Cage Block Clamps**



**Sponge Rubber Clip**



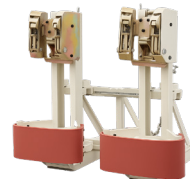
**Carpet Boom**



**Hinged Fork**



**Olecranon Drum Clamp**



**Grapple**



**Trilateral Head (3-way fork)**





## JAC Material Handling Sdn Bhd

202501058075 (1659481-M)

### Company address

1767, Jalan Titi Timbul,  
14300 Nibong Tebal,  
SPS Penang, Malaysia

### Phone number

04-593 1212

### Email address

[jacmhsb@gmail.com](mailto:jacmhsb@gmail.com)



ISO 9001

ISO 14001

OHSAS 18001