

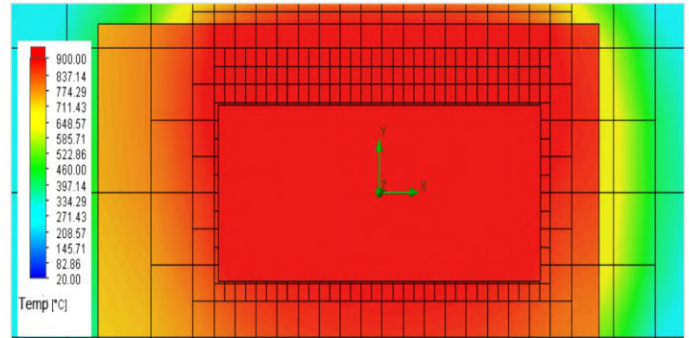


# STM-8-12

## 1200°C Chamber Muffle Furnace

### Main Features

- >Integrated Structure with elegant design.
- >Chamber Materials: Vacuum forming ceramic fiber, which has the advantage of no powder drops off with high temperature, and saving energy more than 50%.
- >SHIMADEN (Japan) Microprocessor based self-tuning PID control provides optimum thermal.
- >Long life type N thermocouple.
- >CE compliant.
- >Built-in RS485 port and USB adaptor as optional setting for computer control, it needs to add extra fees.



Heat Distribution Profile Diagram



- 01 Ceramic Insulation Door
- 02 HRE Resistance Wire
- 03 Shimaden Temperature Controller
- 04 N Type Thermocouple
- 05 SS304 Safty Buckle
- 06 Sound -light Alarm
- 07 Schneider Air Switch
- 08 Operating Buttons

### Technical Parameters

| Model                     | STM-1-10  | STM-3-12    | STM-6-12    | STM-8-12    | STM-12-12   | STM-18-12   | STM-30-12   | OEM      |
|---------------------------|---|-------------|-------------|-------------|-------------|-------------|-------------|----------|
| Inner Dimension (WxDxH)mm | 100x100x100   | 150x150x150 | 180x230x150 | 200x300x120 | 200x300x200 | 250x300x250 | 300x500x200 | Any size |
| Outer Dimension (WxDxH)mm | 250x240x350   | 430x465x620 | 460x570x660 | 480x630x630 | 480x630x710 | 550x635x780 | 600x870x735 |          |
| Type                      | Benchtop  |             |             |             |             |             |             |          |
| Furnace Structure         | Alumina Ceramic Chamber, Temperature control system, Heating element, Furnace shell ,Main Electric Parts and other relative accessories |             |             |             |             |             |             |          |
| Max Temperature           | 1000°C  |             |             | 1200°C      |             |             |             |          |
| Continue Temp             | 950°C   |             |             | 1100°C      |             |             |             |          |
| Power Supply              | 220V/1.2KW  | 220V/2.5KW  | 220V/3KW    | 220V/3KW    | 220V/4KW    | 220V/6KW    | 380V/7.5KW  |          |
| Heating Element           | High quality alloy resistance wire (HRE)  |             |             |             |             |             |             |          |
| Chamber Material          | High temperature polycrystal alumina ceramic fiber plate  |             |             |             |             |             |             |          |
| Temp Precision            | ±1°C  |             |             |             |             |             |             |          |
| Thermocouple              | N type  |             |             |             |             |             |             |          |
| Temp Controller           | SHIMADEN (Japan) brand intelligent microcomputer PID controller can program 4 groups 32 segments  |             |             |             |             |             |             |          |
| Electronic Parts          | SCHNEIDER (France ) electronics brand   |             |             |             |             |             |             |          |
| Heating Rate              | ≤ 25°C/min ( suggest 15-20°C/min for longer life using of furnace )   |             |             |             |             |             |             |          |
| Safety Potection          | Overheat and Thermocouple-break Alarm   |             |             |             |             |             |             |          |
| Certification             | ISO9001 /CE/ SGS  |             |             |             |             |             |             |          |
| Furnace Shell             | High quality cold-rolled steel sheets CNC processing  |             |             |             |             |             |             |          |
| Insulation                | High quality thermal insulation material to ensure a good uniformity  |             |             |             |             |             |             |          |
| Accessories               | One pair of high temperature gloves, One pair of crucible tongs, one catalog and operation manual                                       |             |             |             |             |             |             |          |
| Optional                  | Paperless recorder, Stainless steel exhaust chimney, Quartz /Alumina crucible   |             |             |             |             |             |             |          |



## STM-8-14

### 1400°C Chamber Muffle Furnace

#### Main Features

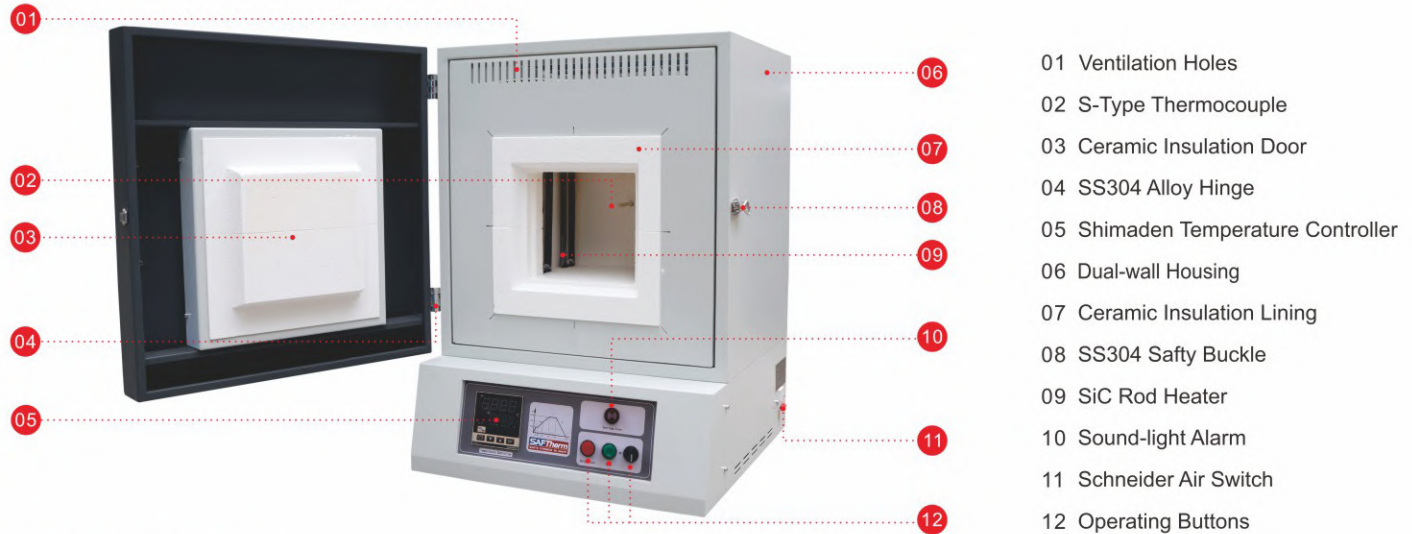
- >Integrated Structure with elegant design.
- >Chamber Materials: Vacuum forming ceramic fiber with advantage of no powder drops off in high temperature and energy saving.
- >Heater: It uses high grade SiC ( Silicon Carbide Heaters) heating element.
- >SHIMADEN (Japan) Microprocessor based self-tuning PID control provides optimum thermal.
- >Long life type S thermocouple.
- >CE compliant.
- >Built-in RS485 port and USB adaptor as optional setting for computer control, it need to add extra fees.



SiC Heating Element



Furnace Inner Picture



- 01 Ventilation Holes
- 02 S-Type Thermocouple
- 03 Ceramic Insulation Door
- 04 SS304 Alloy Hinge
- 05 Shimaden Temperature Controller
- 06 Dual-wall Housing
- 07 Ceramic Insulation Lining
- 08 SS304 Safty Buckle
- 09 SiC Rod Heater
- 10 Sound-light Alarm
- 11 Schneider Air Switch
- 12 Operating Buttons

#### Technical Parameters

| Model                        | STM-3-14  | STM-8-14    | STM-12-14   | STM-18-14   | STM-27-14   | STM-36-14   | OEM      |
|------------------------------|---|-------------|-------------|-------------|-------------|-------------|----------|
| Inner Dimension<br>(WxDxH)mm | 150x150x150   | 200x200x200 | 200x300x200 | 250x300x250 | 300x300x300 | 300x400x300 | Any size |
| Outer Dimension<br>(WxDxH)mm | 490x530x750   | 575x610x825 | 590x680x835 | 610x700x860 | 650x670x900 | 660x800x910 |          |
| Type                         | Benchtop  |             |             |             |             |             |          |
| Furnace Structure            | Alumina Ceramic Chamber, Temperature control system, Heating element, Furnace shell ,Main Electric Parts and other relative accessories |             |             |             |             |             |          |
| Max Temperature              |   |             |             | 1400°C      |             |             |          |
| Continue Temp.               |   |             |             | 1300°C      |             |             |          |
| Power Supply                 | 220V/3KW  | 220V/5KW    | 220V/5KW    | 220V/6KW    | 380V/9KW    | 380V/12KW   |          |
| Heating Element              | High quality Silicon Carbide Rod ( SiC) heater  |             |             |             |             |             |          |
| Chamber Material             | High temperature 1500 Type polycrystal alumina ceramic fiber material   |             |             |             |             |             |          |
| Temp Precision               | ±1°C  |             |             |             |             |             |          |
| Thermocouple                 | S type  |             |             |             |             |             |          |
| Temp Controller              | SHIMADEN (Japan) brand intelligent microcomputer PID controller can program 4 groups 32 segments  |             |             |             |             |             |          |
| Electronic Parts             | SCHNEIDER (France ) electronics brand   |             |             |             |             |             |          |
| Heating Rate                 | ≤ 25°C/min ( suggest 15°C/min for longer life using of furnace )  |             |             |             |             |             |          |
| Safety Protection            | Overheat and thermocouple-break alarm   |             |             |             |             |             |          |
| Certification                | ISO9001 /CE/ SGS  |             |             |             |             |             |          |
| Furnace Shell                | High quality cold-rolled steel sheets CNC processing  |             |             |             |             |             |          |
| Insulation                   | High quality thermal insulation material to ensure a good uniformity  |             |             |             |             |             |          |
| Accessories                  | One pair of high temperature gloves, One pair of crucible tongs, one catalog and operation manual                                       |             |             |             |             |             |          |
| Optional                     | Paperless recorder, Stainless steel exhaust chimney, Quartz /Alumina crucible   |             |             |             |             |             |          |



# STM-12-17

## 1700°C Chamber Muffle Furnace

### Main Features

- >Integrated Structure with elegant design.
- >Chamber Materials: Vacuum forming ceramic fiber with advantage of no powder drops off in high temperature and energy saving .
- >Heater: It use high grade MoSi2 ( Molybdenum Disilicide Heaters ) heating element.
- >YUDIAN brand Microprocessor PID controller or any other brand as option.
- >Long life type B thermocouple.
- >CE compliant.
- >Built-in RS485 port and USB adaptor as optional setting for computer control,it need to add extra fees.



MoSi2 Rod Heater



Furnace inner picture



- 01 Ventilation Holes
- 02 Dual-wall Housing
- 03 Ceramic Insulation Door
- 04 Zinc Alloy Hinges
- 05 Temperature Controller
- 06 Ceramic Fiber Lining
- 07 SS304 Safty Buckle
- 08 MoSi2 Rod Heater
- 09 Amp&Volt Meters
- 10 Schneider Air Switch
- 11 Operating Buttons

### Technical Parameters

| Model                     | STM-1-17  | STM-3-17    | STM-8-17    | STM-12-17   | STM-20-17   | STM-36-17     | OEM      |
|---------------------------|---|-------------|-------------|-------------|-------------|---------------|----------|
| Inner Dimension (WxDxH)mm | 100x120x100   | 150x150x150 | 200x200x200 | 200x300x200 | 250x320x250 | 300x400x300   | Any size |
| Outer Dimension (WxDxH)mm | 383x432x660   | 510x560x870 | 600x620x920 | 600x693x920 | 610x730x970 | 1040x840x1250 |          |
| Type                      | Benchtop  |             |             |             |             |               |          |
| Furnace Structure         | Alumina Ceramic Chamber, Temperature control system, Heating element, Furnace shell ,Main Electric Parts and other relative accessories |             |             |             |             |               |          |
| Max Temperature           | 1700°C  |             |             |             |             |               |          |
| Continue Temp.            | 1600°C  |             |             |             |             |               |          |
| Power Supply              | 220V/2KW  | 220V/4KW    | 220V/5KW    | 220V/6KW    | 380V/7KW    | 380V/13KW     |          |
| Heating Element           | High quality Molybdenum Disilicide ( MoSi2) heater  |             |             |             |             |               |          |
| Chamber Material          | High temperature 1800 Grade polycrystal alumina ceramic fiber material  |             |             |             |             |               |          |
| Temp Precision            | ±1°C  |             |             |             |             |               |          |
| Thermocouple              | B type  |             |             |             |             |               |          |
| Temp Controller           | YUDIAN brand 518P Microprocessor PID controller as standard or any other brand as option  |             |             |             |             |               |          |
| Electronic Parts          | SCHNEIDER (France ) main electronic parts /High quality electric transformer  |             |             |             |             |               |          |
| Heating Rate              | ≤ 15°C/min ( suggest 10°C/min for longer life using of furnace )  |             |             |             |             |               |          |
| Safety Protection         | Overheat and thermocouple-break alarm   |             |             |             |             |               |          |
| Certification             | ISO9001 /CE/ SGS  |             |             |             |             |               |          |
| Furnace Shell             | High quality cold-rolled steel sheets CNC processing  |             |             |             |             |               |          |
| Insulation                | High quality thermal insulation material to ensure a good uniformity  |             |             |             |             |               |          |
| Accessories               | One pair of high temperature gloves, One pair of crucible tongs, one catalog and operation manual                                       |             |             |             |             |               |          |
| Optional                  | Paperless recorder, Stainless steel exhaust chimney, Quartz /Alumina crucible   |             |             |             |             |               |          |