

# Insulated Copper Tube /Pipe

A complete line of insulated copper tube and pipe sheathed in high grade flame retardant insulation for thermal resistance up to 120 °C and suitable for any type of residential or commercial Air Conditioners.

As INABA DENKO copper tubes and pipes are pre-insulated, much of installer's time and energy to assemble copper tube/pipe and insulation can be saved.



## Safety Relevant Safety Standards

### Superior Quality Control

INABA DENKO insulated copper tube and pipe conforms to most current safety and performance standards for copper pipe and insulation.

### Flame Retardant Insulation

Our insulation is equivalent to European Standard (EN13501-1) and, German Standard (DIN4102-1, B1 class) and UL-94 HF-1.

#### Copper Tube

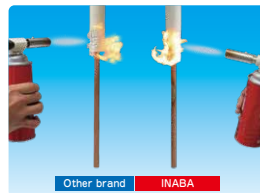
Japanese Standard (JIS H3300 C1220T)  
American Standard (ASTM B280 UNS No.C12200)  
※Chemical composition and temper

#### Insulation

European Standard (EN13501-1)  
German Standard (DIN 4102-1,B1 class)  
UL-94 HF-1

### Vertical flame test (internal test)

Ignite the insulation for 5 seconds after heating the copper tube for 30 seconds by burner, and then leave.



Read QR code



<https://youtu.be/Cdvwx34yeUs>

## Quality High-Quality Materials

### Excellent Thermal Resistance

All insulated tube and pipe products are fabricated with high grade insulation with a thermal resistance up to 120°C.

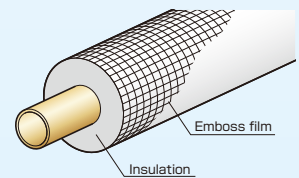
### Applicable to New Refrigerant "R32" !!

※Some of limited size are non-applicable.

### Wear Resistant Outer Covering

Tough embossed outer covering is easy to tape and prevents damage during installation.

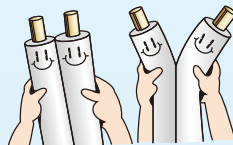
In addition, PE foam has good pressure resistance and it's not easy to be torn, especially at the hanging point.



## Function Upgrade Working Efficiency

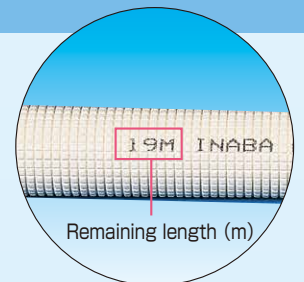
### Improved Installation Efficiency

Easy to bend and cut, Paircoil (PC) can easily be separated by hand. No tools or cutting are necessary.



### Length Markings

For 20m & 30m Coil, consecutively numbered length marking are clearly printed at 1 meter intervals on insulation surface to indicate remaining length.



### Concealed Installation

For concealed pipe installations, thicker insulation types (20mm/25mm) are available to further reduce sweating.

### Copper Specifications

The copper tube is oxidation seamless copper tube, and is satisfied with JIS H3300 C1220T. Chemical composition of copper tube is shown in the below table.

Chemical Composition	
Cu (%)	P (%)
99.90 or more	0.015~0.040

※Complied with ASTM B280 UNS No.C12200

### Insulation Specifications

Chemical cross-linked foamed polyethylene enclosed by a plastic film with an embossed surface.

Item	Value
Thermal Conductivity (Ave. 23°C)	0.043 or less W/m·K
Tensile Strength	48.2 N/cm <sup>2</sup>
Water Absorption Volume	0.06 g/100 cm <sup>3</sup>
Thickness Shrinkage Ratio (Ave. 120°C)	±2.0 %

※This data is test outcome, not guaranteed value.

Item	Value
Moisture Permeability (per 25mm thickness)	20 ng/m <sup>2</sup> ·s·Pa or less
Temperature Range	-40°C~120°C
Flame Retardant (Equivalent to)	EN-13501-1 DIN 4102-1, B1 class UL-94 HF-1

**PC/NC-JE****PAIRCOIL·NEOCOIL****PAIRCOIL 20M**

Item No.	Copper tube (O.D. × Length)	Copper thickness (mm)	Insulation thickness (mm)	Pcs/Pkg
PC-2320-JE	1/4×3/8×20m	0.8×0.8	8×8	1
PC-2420-JE	1/4×1/2×20m	0.8×0.8	8×10	1
PC-2520-JE	1/4×5/8×20m	0.8×1.0	8×10	1
PC-3520-JE	3/8×5/8×20m	0.8×1.0	8×10	1
PC-3620Z-JE	3/8×3/4×20m	0.8×1.2	8×10	1

**NEOCOIL 20M**

NC-220-JE	1/4×20m	0.8	8	2
NC-320-JE	3/8×20m	0.8	8	2
NC-420-JE	1/2×20m	0.8	10	1
NC-520-JE	5/8×20m	1.0	10	1
NC-620Z-JE	3/4×20m	1.2	10	1

**PAIRCOIL 30M**

PC-2330-JE	1/4×3/8×30m	0.8×0.8	8×8	1
PC-2430-JE	1/4×1/2×30m	0.8×0.8	8×10	1
PC-2530-JE	1/4×5/8×30m	0.8×1.0	8×10	1

**PAIRCOIL U TYPE 20M****Competitive Model**

PC-2320U-JE	1/4×3/8×20m	0.61×0.61	8×8	1
PC-2420U-JE	1/4×1/2×20m	0.61×0.61	8×10	1
PC-2520U-JE	1/4×5/8×20m	0.61×0.81	8×10	1

**NEOCOIL U TYPE 20M**

NC-220U-JE ★	1/4×20m	0.61	8	2
NC-320U-JE ★	3/8×20m	0.61	8	2
NC-420U-JE ★	1/2×20m	0.61	10	1
NC-520U-JE	5/8×20m	0.81	10	1
NC-620U-JE	3/4×20m	1.0	10	1

**PAIRCOIL U TYPE 30M**

★ Order Production

PC-2330U-JE	1/4×3/8×30m	0.61×0.61	8×8	1
PC-2430U-JE	1/4×1/2×30m	0.61×0.61	8×10	1

Insulation Thickness 20mm

**NC-20H****NEOCOIL-20H**

Item No.	Copper tube (O.D. × Length)	Copper thickness (mm)	Insulation thickness (mm)	Pcs/Pkg
NC-220JE-20H	1/4×20m	0.8	20	1
NC-320JE-20H	3/8×20m	0.8	20	1
NC-420JE-20H	1/2×20m	0.8	20	1
NC-520JE-20H	5/8×20m	1.0	20	1
NC-620ZJE-20H	3/4×20m	1.2	20	1