

*Crap & Win!*  
**iPad Pro**

Check out our contest!  
[suzuka.com.my/promotion](http://suzuka.com.my/promotion) | T&C Apply

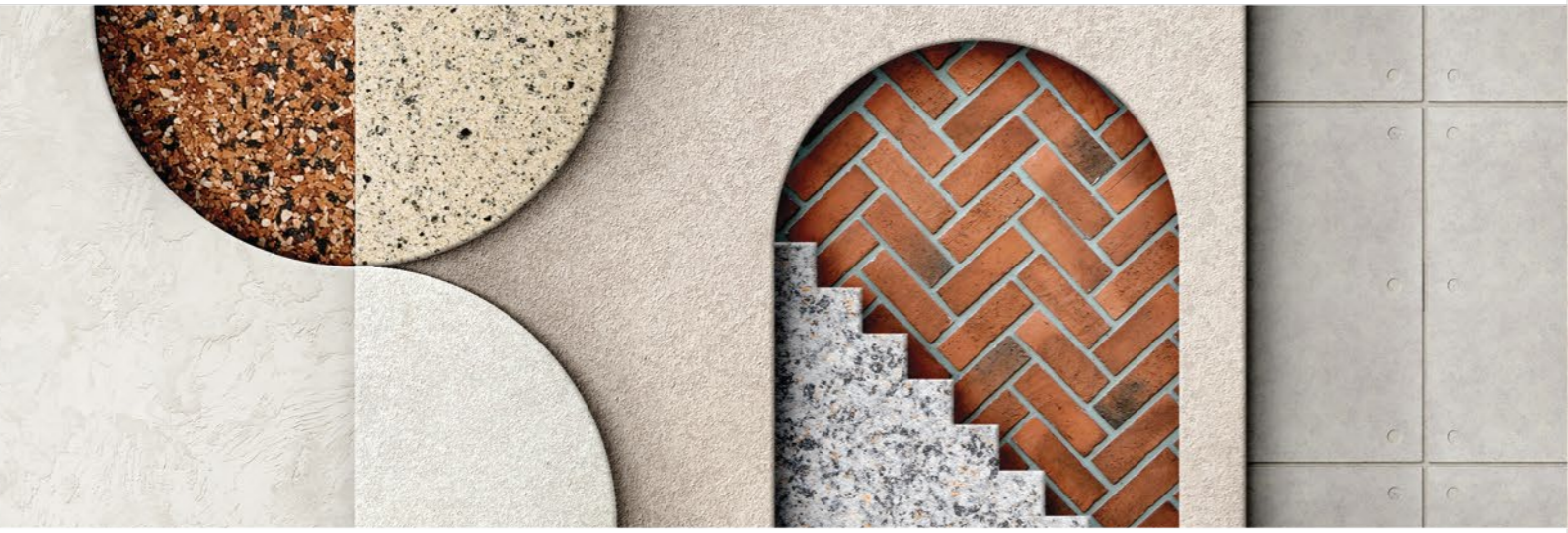


# ARCHISTRA



## WALL FINISH PROFESSIONALS

TAIWAN • MALAYSIA • THAILAND



BRICK & STONE VENEER • TEXTURED PAINT • WALL PANEL • ECES • TEXTURE COATING • PEBBLE STONE COATING



[suzuka.com.my](http://suzuka.com.my)

[suzuka.group](https://www.facebook.com/suzuka.group) | Hotline : +6012-258 7388

\* Photos of the products shown in this catalogue may vary in color due to lighting condition & printing. We suggest you examine actual product samples before ordering.



ARCHISTRA-E2-2408



EDITION  
**02**

### WALL PANEL SERIES

- Complies to LEED, U.S. Green Building Council Standards.
- Fire Retardant: Fire Rating B1, DIN Standards.

WALL FINISH PROFESSIONALS.

SINCE 1977

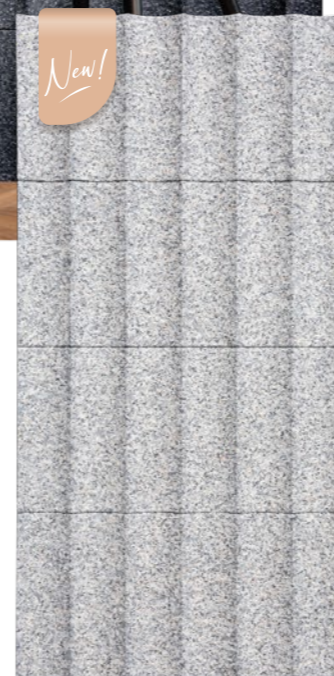
# ARCHISTRA

Redefine your walls with the Archistra wall panel collection.

Transform your space with our exquisite Archistra wall panel collection. Crafted using polyurethane, with precision and artistic flair, these panels redefine design, seamlessly blending artistry & architecture.

Choose from a diverse range of patterns, textures, and colors to suit your aesthetic preferences. Whether you seek a contemporary focal point or a timeless elegance, Archistra offers a versatile solution.

Ultra lightweight, hassle free installation and maintenance, these panels effortlessly adds a touch of sophistication and personality to your living spaces.



ACH-11 Series



ACH-10 Series



ACH-20 Series



ACH-40 Series

## Features



Ultra Lightweight



Suitable for the Interior & Exterior (To be used under the roof)



Water Resistant



Easy Installation & DIY Friendly



Anti-mould



Paintable



Anti-termite



Can Be Paired with other Suzuka Coatings



Finished with Green Coating



Made in Malaysia



Complies to **LEED**, U.S. Green Building Council Standards.



Fire Retardant: Fire Rating B1, DIN Standards.

# ACH-11

series



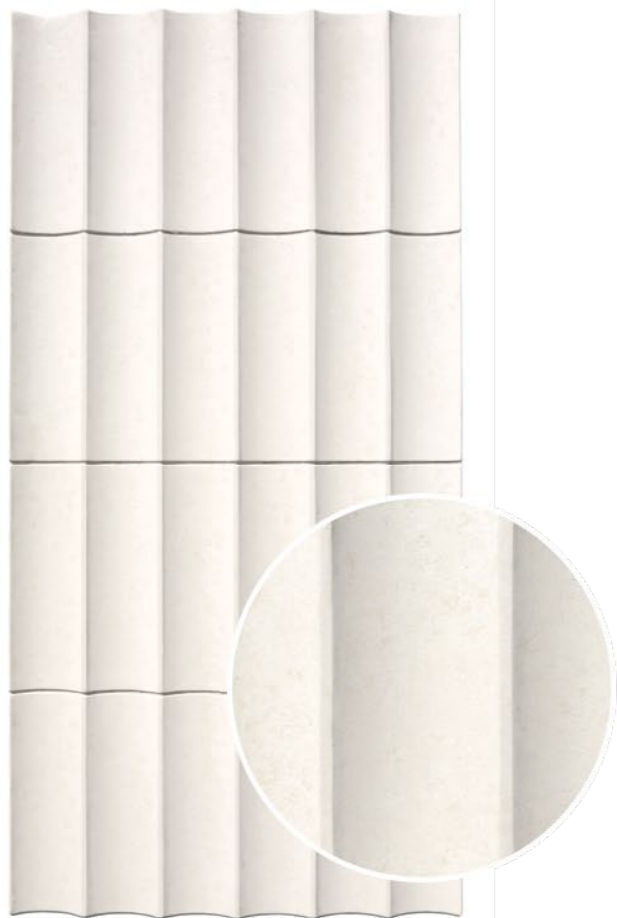
Coverage (Per box) | Pieces (Per box)  
**4.32 sqm** | **6 pcs**

Max. Weight (ACH-1101 - 1105)  
**1.4 kg** (Per Piece) | **10.0 kg** (Per box)

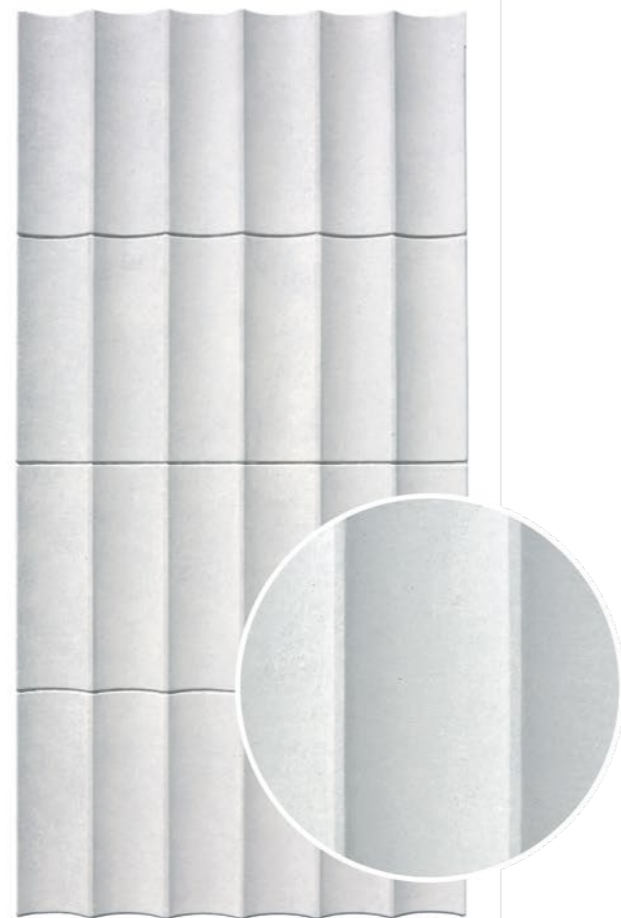
Max. Weight (ACH-1151-1153)  
**2.2 kg** (Per Piece) | **15.0 kg** (Per box)

\* Please allow a  $\pm$  5% tolerance for product size, weight and colour.

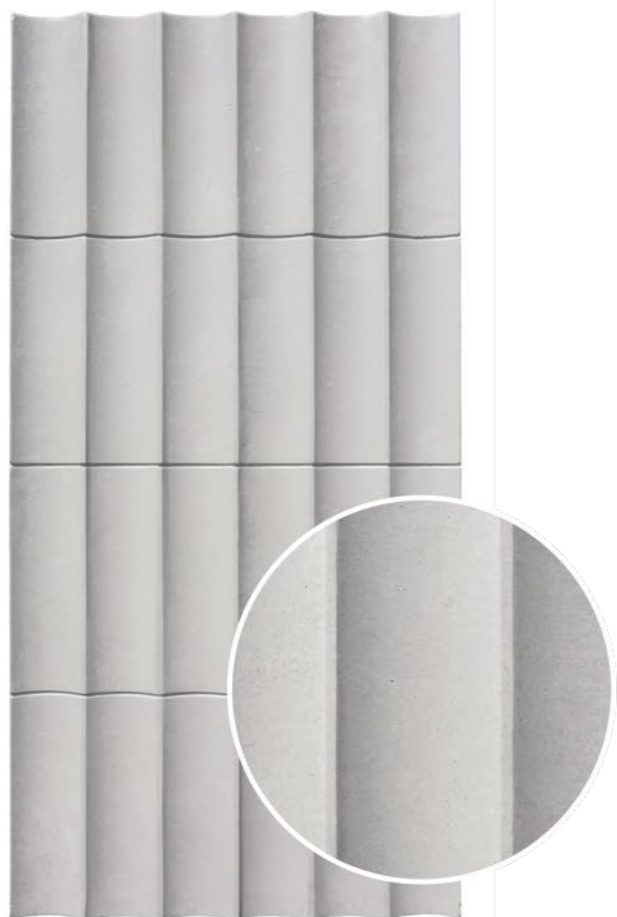




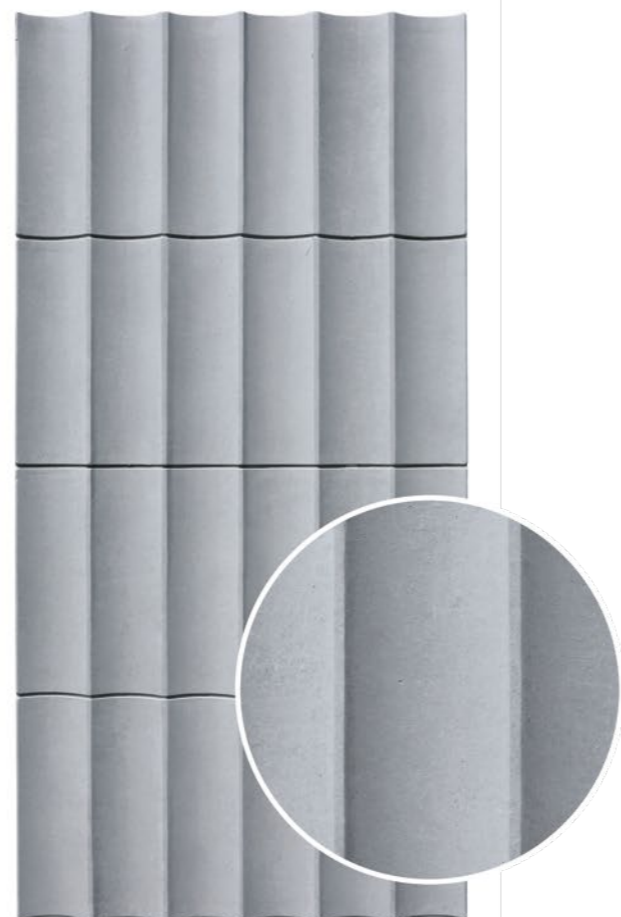
ACH-1101



ACH-1102



ACH-1103



ACH-1104



ACH-1101



ACH-1104



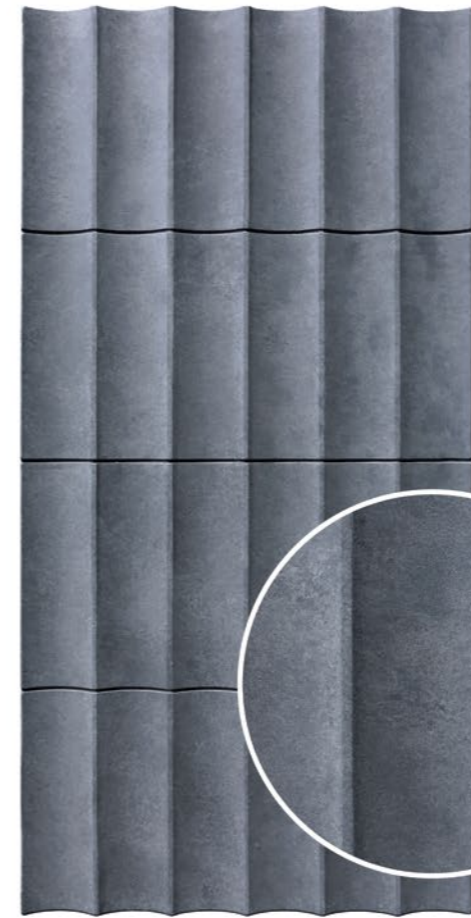
ACH-1102



ACH-1103



Combination of ACH-1101 & ACH-1102



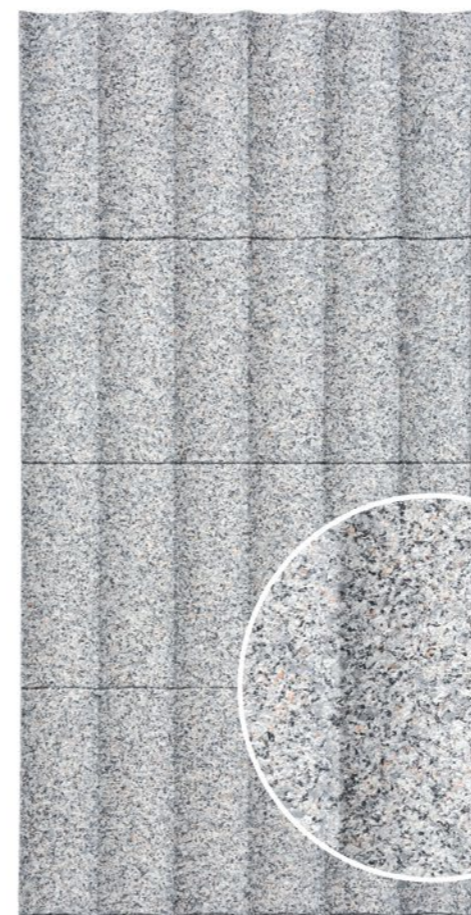
ACH-1105



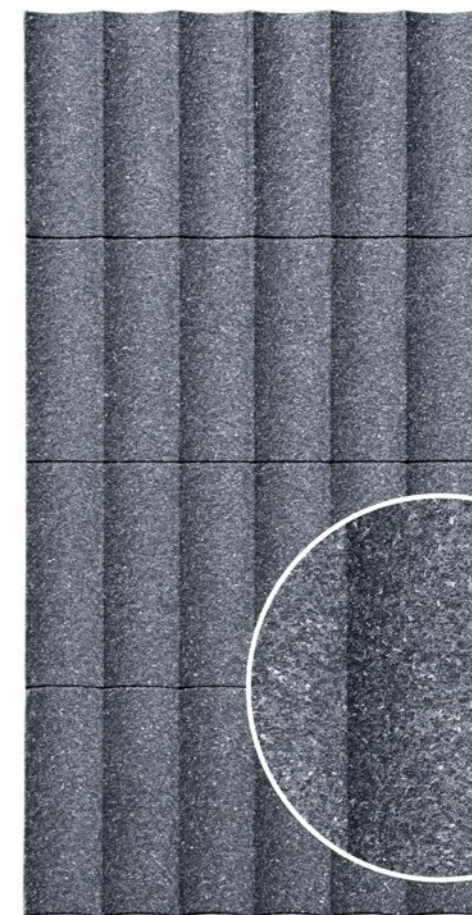
ACH-1151



ACH-1105



ACH-1152



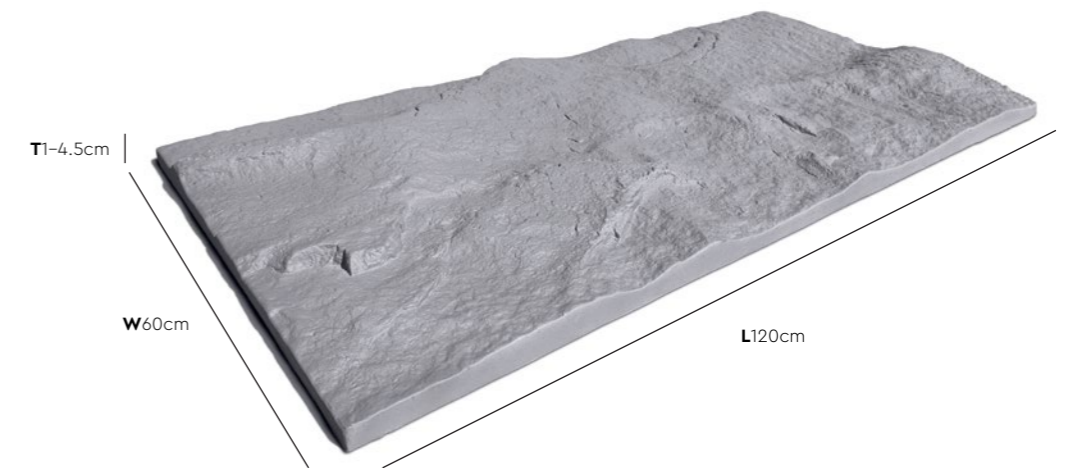
ACH-1153

All color shown are as close to the actual Suzuka® Archistra colors as modern printing techniques permit, nonetheless, there are still color/tone differences.

**We highly recommend seeing actual samples before ordering.**

# ACH-10

series



ACH-1004 | Stacks



ACH-1005 | Stacks

Coverage (Per box) | Pieces (Per box)  
**2.88 sqm** | **4 pcs**

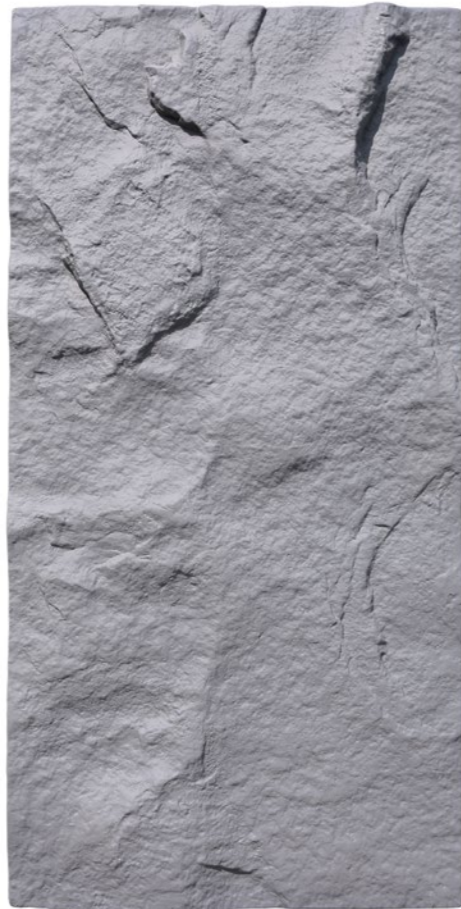
Max. Weight (ACH-1001 - 1006)  
**2.2 kg** (Per Piece) | **11.5 kg** (Per box)

Max. Weight (ACH-1051)  
**3.3 kg** (Per Piece) | **13.3 kg** (Per box)

\* Please allow a  $\pm$  5% tolerance for product size, weight and colour.



ACH-1001



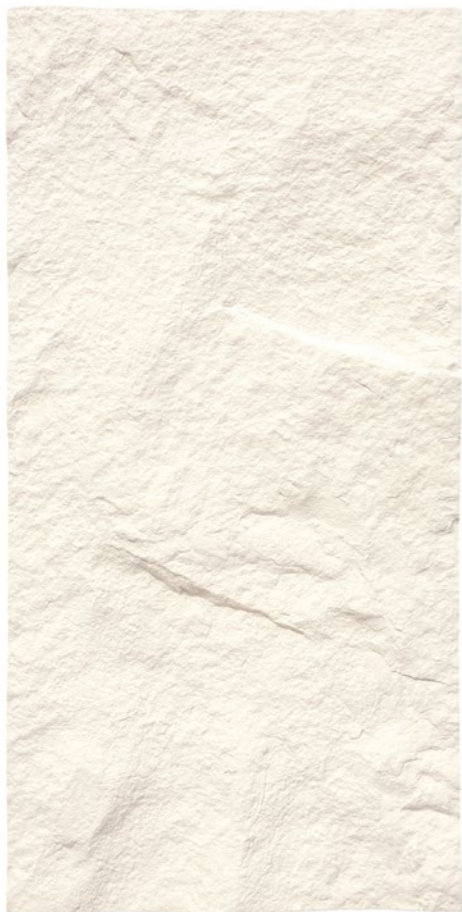
ACH-1002



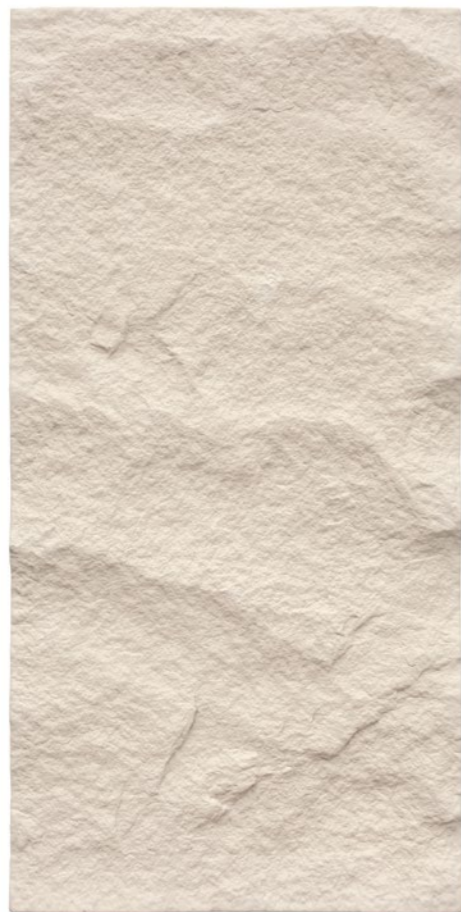
ACH-1003



ACH-1003 | Running Bond



ACH-1004



ACH-1005



ACH-1006



ACH-1002 | Random

All color shown are as close to the actual Suzuka® Archistra colors as modern printing techniques permit, nonetheless, there are still color/tonne differences.

**We highly recommend seeing actual samples before ordering.**



ACH-1005 | Running Bond



ACH-1051



ACH-1004 | Stacks

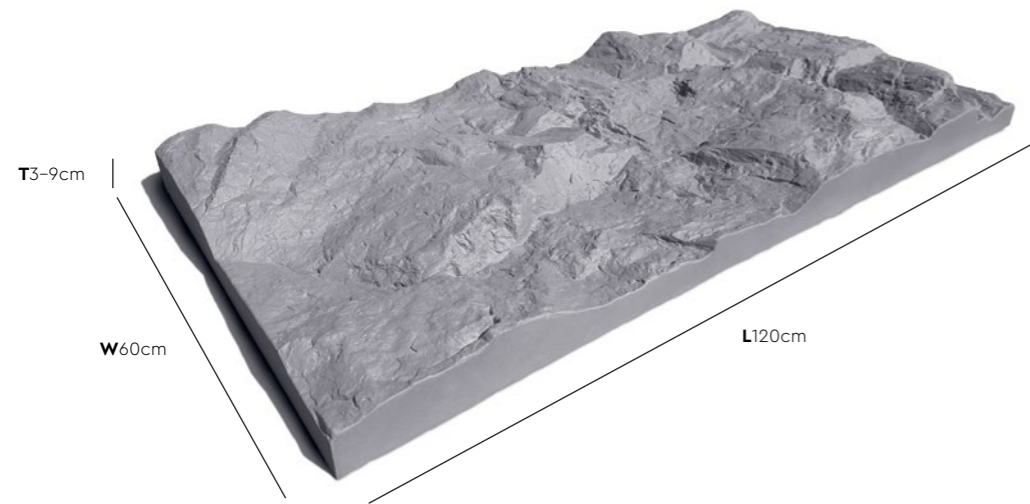


ACH-1001 | Running Bond



# ACH-20

series



Combination of **ACH-1004 & ACH-2004** | Running Bond

Coverage (Per box) | Pieces (Per box)  
**2.16 sqm** | **3 pcs**

Max. Weight (ACH-2001 - 2006)  
**2.8 kg** (Per Piece) | **11.5 kg** (Per box)

Max. Weight (ACH-2051)  
**3.9 kg** (Per Piece) | **11.8 kg** (Per box)

\* Please allow a ± 5% tolerance for product size, weight and colour.



ACH-2006 | Stacks



ACH-2001



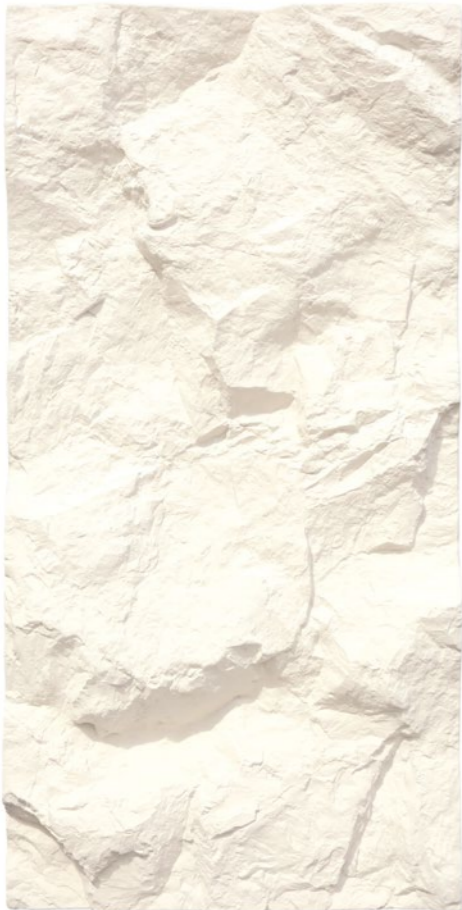
ACH-2002



ACH-2003



ACH-2005 | Running Bond



ACH-2004



ACH-2005



ACH-2006



ACH-2001 | Random



ACH-2051



Combination of ACH-1002 & ACH-2002 | Random



ACH-2003 | Random



ACH-4002 | Running Bond



# ACH-40

series



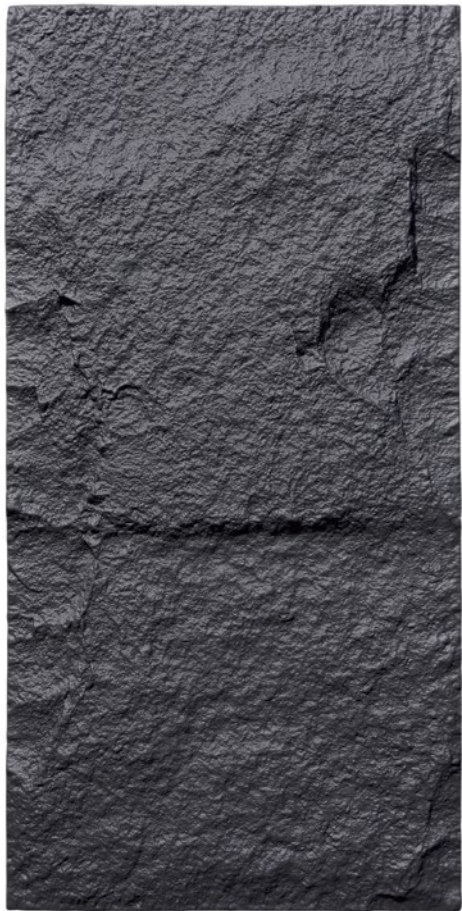
Coverage (Per box) | Pieces (Per box)  
**2.88 sqm** | **4 pcs**

Max. Weight (ACH-4001 - 4006)  
**2.0 kg** (Per Piece) | **11.5 kg** (Per box)

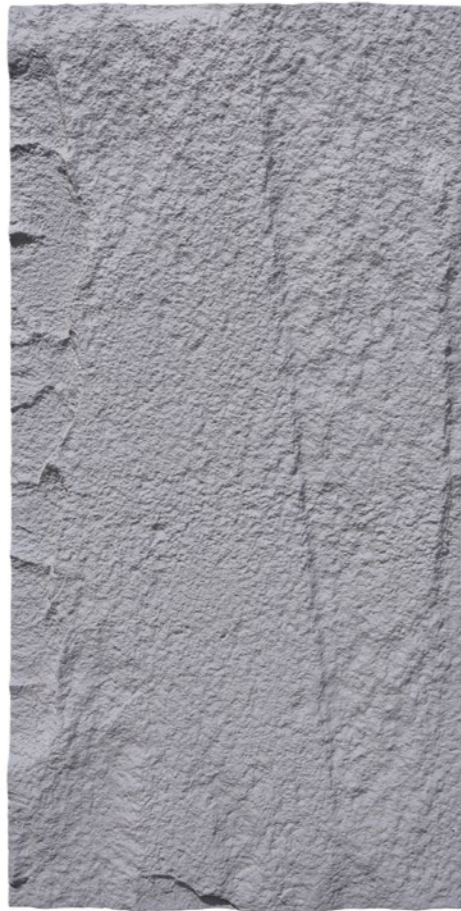
Max. Weight (ACH-4051)  
**3.1 kg** (Per Piece) | **13.0 kg** (Per box)

\* Please allow a ± 5% tolerance for product size, weight and colour.

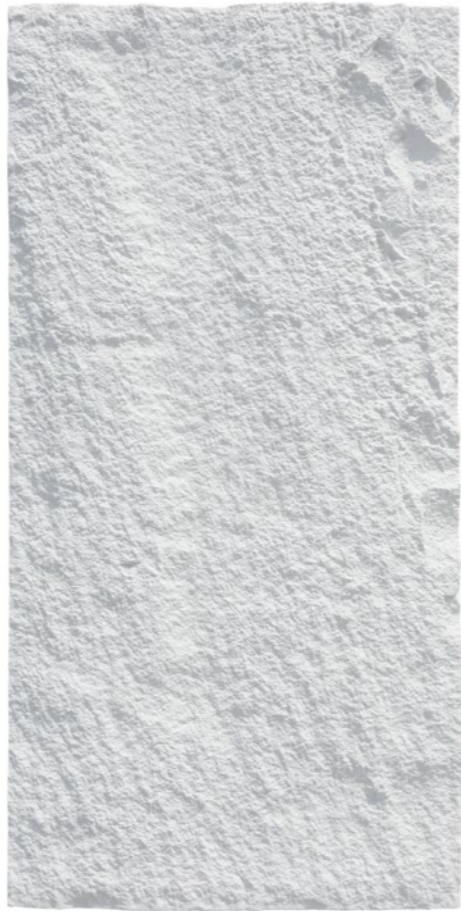
Combination of ACH-2005 & ACH-4005 | Running Bond



ACH-4001



ACH-4002



ACH-4003



ACH-4004 | Random



ACH-4004



ACH-4005



ACH-4006



ACH-4003 | Stacks



Combination of ACH-1001 & ACH-4001 | Random



ACH-4051



ACH-4006 | Random

# Layout Options.

# ARCHISTRA



Running Bond



Stacks



Random

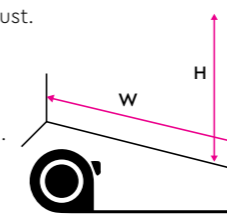


# Installation Instructions

## Step 1 - Surface Preparation

**A** Clean up the surface from dirt or dust.

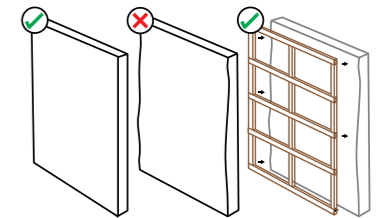
If the scheme coat of the wall is weak, chalking or peeling, we recommend to use the **Wall Sealer Pro** (Page 26).



**B** Measure the dimensions of wall.

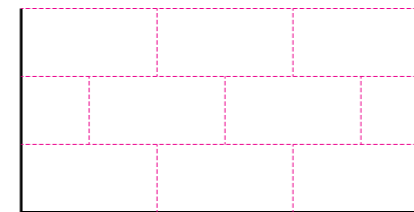
**C** Ensure your wall surface is non-wavy, dry, and solid.

If your surface is too wavy for the panels to be applied in flatly, a wooden frame can be built as a backing for the panels.

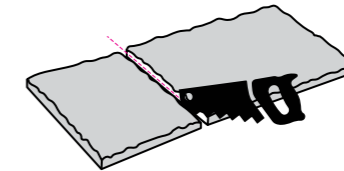


## Step 2 - Layout Planning

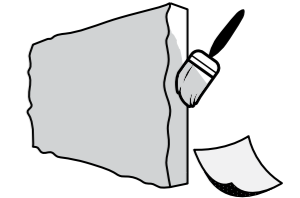
**A** Plan the panel layout.



**B** Some panels may need to be trimmed to fit your wall dimensions.



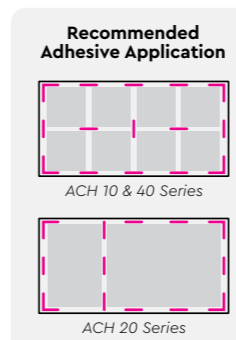
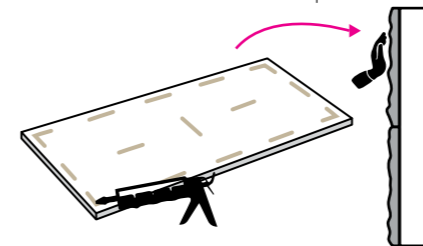
**C** Sand the trimmed part with sand paper and touch up with Archistra paint (Included).



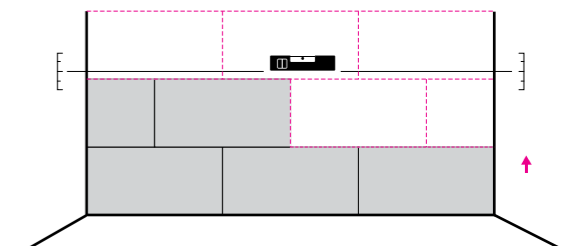
**!** Ensure the whole part is coated & fully dried.

## Step 3 - Panel Application

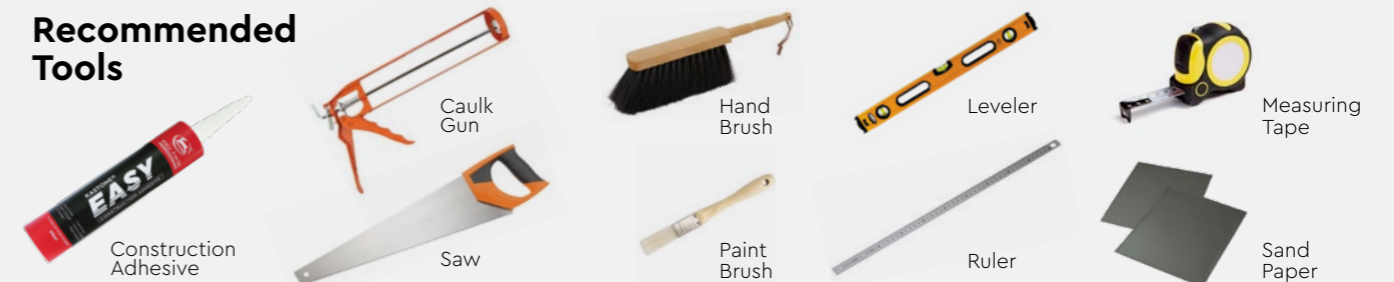
**A** Apply **construction adhesive** on the back of the panel and stick to the wall. Press and hold the panel a few seconds to ensure it is in place.



**B** Install the panels working from the bottom upwards. The use of a leveler is recommended.



### Recommended Tools





## TECHNICAL SPECIFICATIONS



ACH-1101

Series	ACH-11	ACH-10	ACH-20	ACH-40
Dimension (cm)	L120 x W60 x T1-2.5	L120 x W60 x T1-4.5	L120 x W60 x T3-9	L120 x W60 x T1-3
Coverage Per Box (sqm)	4.32	2.88	2.16	2.88
Pieces Per Box	6	4	3	4
Weight (kg)				
kg/piece (ECES) - (01 - 05)	1.4	-	-	-
kg/piece (SGC) - (51 - 53)	2.2	-	-	-
Max. kg/box (ECES) - (01 - 05)	10.0	-	-	-
Max. kg/box (SGC) - (51 - 53)	15.0	-	-	-
ACH-10/20/40				
kg/piece (SP) - (01 - 06)	-	2.2	2.8	2.0
kg/piece (SGC) - (51)	-	3.3	3.9	3.1
Max. kg/box (SP) - (01 - 06)	-	11.5	11.5	11.5
Max. kg/box (SGC) - (51)	-	13.3	11.8	13.0

\* Data of weight presented is the maximum weight for every piece & box respectively.  
 \* Please allow a ± 5% tolerance for panel size, weight and colour.  
 \* Product may vary in colour due to lighting conditions and printing. We suggest you examine product samples before ordering.



“ Make your wall finishes last longer! ”

### Superior primer for concrete, skimmed or masonry surfaces.

This sealer that has good substrate penetration abilities to increase adhesion of product to prevent chalking or peeling off. It has excellent alkaline resistance properties that can prevent efflorescence. It is an ideal base coat for any SUZUKA® or any wall finish products.

Packing Size:

1L 5L 20L

Coverage

6.5 - 8.5 m<sup>2</sup>/l/coat

Drying Time (hour)

Surface Dry : 1 | Hard Dry : 5 | Recoating : 5

Substrate Temperature: 23°C - 26°C

Suitable for:

- Masonry wall
- Brickwork
- Plaster
- Skimmed Coat
- Asbestos free substrate

Features:

- Excellent alkaline resistance to prevent efflorescence.
- Good for new walls and repainting.
- Prevents skim coat from chalking & peeling off.
- Extremely good penetration.
- Excellent adhesion.
- Exterior and interior use.
- Applicable with brush, roller or spray gun.

Airless Spray

Nozzle 1.8 - 2.0 mm

Spray Angle Degree 65° - 80°

Pressure 210 psi/150kg/cm<sup>2</sup>