

*Crap & Win!*  
**iPad Pro**  
 Check out our contest!  
 suzuka.com.my/promotion | T&C Apply



# STRATO®

## CASHMERE & TAFFETA

EDITION  
**1.2**

### WALL FINISH PROFESSIONALS

TAIWAN • MALAYSIA • THAILAND

## *Chimmery*

INTERIOR TEXTURED PAINTS

- Complies to the
- American California Proposition 65 Standard.
  - LEED, U.S. Green Building Council Standard.



WALL FINISH  
 PROFESSIONALS.

SINCE  
 1977



BRICK & STONE VENEER • TEXTURED PAINT • WALL PANEL • ECES • TEXTURE COATING • PEBBLE STONE COATING



**suzuka.com.my**

Hotline : +6012-258 7388

\* Photos of the products shown in this catalogue may vary in color due to lighting condition & printing. We suggest you examine actual product samples before ordering.



CASHMERE & TAFFETA-E1.2-2407



# SUZUKA® WALL SEALER PRO

“ Make your wall finishes last longer! ”



Packing Size: **1L 5L 20L**

## Superior primer for concrete, skimmed or masonry surfaces.

This sealer that has good substrate penetration abilities to increase adhesion of product to prevent chalking or peeling off.

It has excellent alkaline resistance properties that can prevent efflorescence. It is an ideal base coat for any SUZUKA® or any wall finish products.

Coverage	Drying Time (hour)	
<b>6.5 - 8.5</b> m <sup>2</sup> /l/coat	Surface Dry : <b>1</b>	Substrate Temperature: <b>23°C - 26°C</b>
	Hard Dry : <b>5</b>	
	Recoating : <b>5</b>	

### Features:

- Excellent alkaline resistance to prevent efflorescence.
- Good for new walls and repainting.
- Prevents skim coat from chalking & peeling off.
- Extremely good penetration.
- Excellent adhesion.
- Exterior and interior use.
- Applicable with brush, roller or spray gun.

### Suitable for:

- Masonry wall
- Brickwork
- Plaster
- Skimmed Coat
- Asbestos free substrate

### Airless Spray

Nozzle	Spray Angle Degree	Pressure
<b>1.8 - 2.0 mm</b>	<b>65° - 80°</b>	<b>210 psi/150kg/cm<sup>2</sup></b>



# STRATO® Cashmere

# SCH



**SCH 001 - 021**

Strato® Cashmere embodies the pinnacle of elegance in textured coating. Achieved through smooth layering and delicate craftsmanship, the finished product gives a refined and royal appearance with a lingering hint of sophistication.

### Appearance

Low Sheen	● ● ● ● ●	High Sheen
Smooth Texture	● ● ● ● ●	Rough Texture
Matte	● ● ● ● ●	Metallic

### Features

- Interior use only



Low VOC & Odor



Green Choice, Water Based & Eco-friendly



Formaldehyde & Lead Free



Easy Application & DIY Friendly



Applicable on Ceiling



Easy Maintenance



Slight Metallic Finish

Complies to the

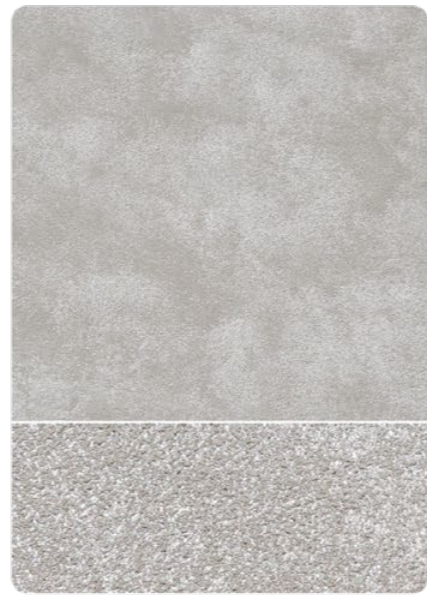
- American California Proposition 65
- LEED, U.S. Green Building Council Standards



**SCH-001** Pearl White



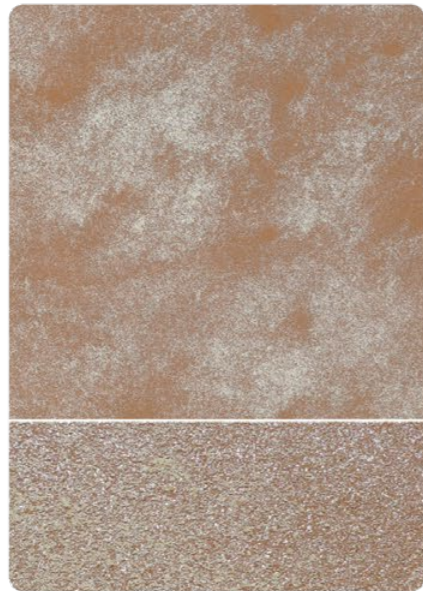
**SCH-002** Silver Mist



**SCH-003** Silver Slate



**SCH-004** Platinum Metal



**SCH-005** Bronze Age



**SCH-006** Sand Castle Beige



**SCH-007** Autumn Beige



**SCH-008** Eggshell Beige



**SCH-009** Desert Gold



Interior Design by  
**METRICS®**  
GLOBAL

**SCH-003** Silver Slate



**SCH-016** Stardust Silver



**SCH-008** Eggshell Beige

All color shown are as close to the actual Suzuka® Strato® colors as modern printing techniques permit, nonetheless, there are still color/tonne differences.

**We highly recommend seeing actual samples before ordering.**



SCH-014 Coral Blush



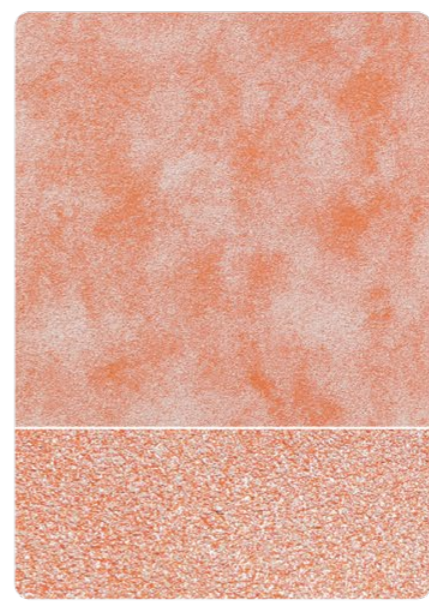
SCH-015 Powder Blue

All color shown are as close to the actual Suzuka® Strato® colors as modern printing techniques permit, nonetheless, there are still color/ tone differences.

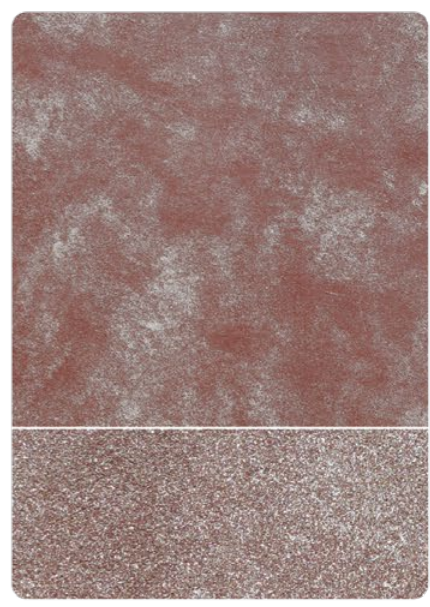
**We highly recommend seeing actual samples before ordering.**



SCH-010 Honey Yellow



SCH-011 Peach Blossom



SCH-012 Plum Sunset



SCH-013 Baby Doll Pink



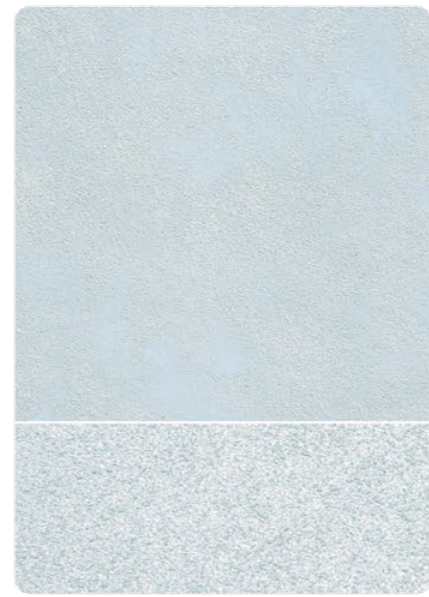
SCH-014 Coral Blush



SCH-015 Powder Blue



SCH-016 Stardust Silver



SCH-017 Lace blue



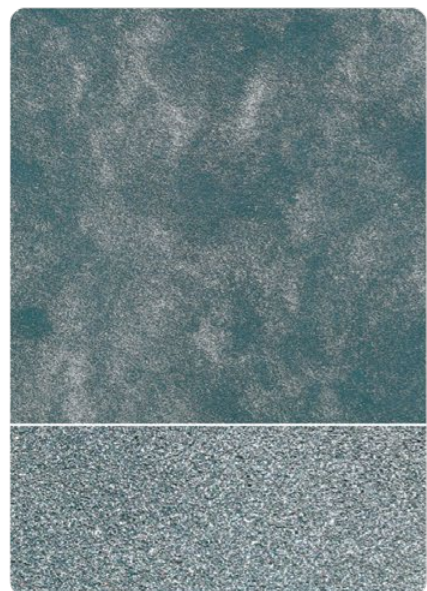
SCH-018 Ash Grey



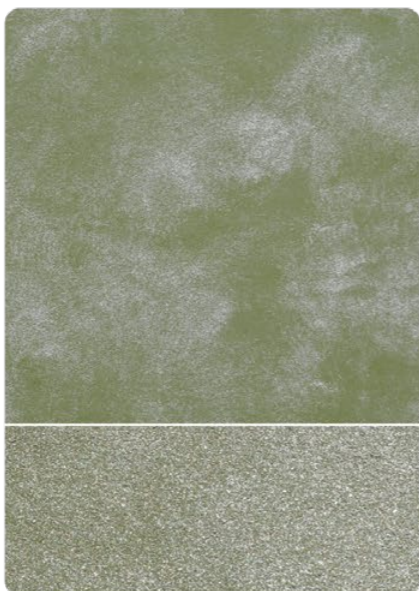
SCH-006 Sand Castle Beige



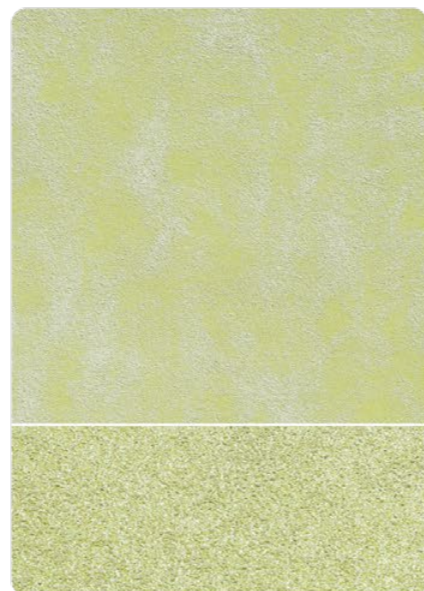
SCH-019 Peacock Blue



SCH-019 Peacock Blue



SCH-020 Olive Tree



SCH-021 Tropical Garden



## Packing Data

1 L	Primer
1 L	Texture Coat
1 L	Topcoat (SR-Top 3)

### Coverage (per set)

WALL	6 - 7 sqm
CEILING	5 - 6 sqm

Strato® Cashmere

# Application Technique

Application Video



### Preparation:

- Cover the edges of surface that won't be painted by masking it with tape, paper or plastic.
- Clean up the wall surface to ensure it is free from dirt and dust.



## 1 Primer

Roll 2 layers of primer on the entire surface. Allow 30 minutes to dry between the layers. (The primer can be diluted with maximum 3% of clean water)

**Tool:** Roller



## 2 Texture Coat

Brush on texture coat in criss cross patterns. Apply 1-2 layers. Ensure the whole surface area is covered. (Do Not Dilute)

**Tool:** Brush



## 3 Flattening

Flatten the entire surface in circular motion to enhance the pattern.

**Tool:** Plastic Scrapper



## 4 Topcoat

Evenly roll SR-Top 3 on entire surface. Allow to dry for 1 hour.

**Tool:** Roller

### IMPORTANT:

Color may vary on application technique & amount of material used.

### Dilution Guide:

Primer : Max 3% of clean water.  
Texture : Do not dilute.



**Tools:** Roller, Brush & Plastic Scrapper

STRATO®  
Taffeta

SRT



SRT 201 - 233

A vibrant color layered in texture and dusted with a shimmering pearl effect crafts a bold and radiant feel onto the wall.

Appearance

Low Sheen	● ● ● ● ●	High Sheen
Smooth Texture	● ● ● ● ●	Rough Texture
Matte	● ● ● ● ●	Metallic

Features

• Interior use only



Low VOC & Odor



Green Choice, Water Based & Eco-friendly



Formaldehyde & Lead Free



Easy Application & DIY Friendly



Applicable on Ceiling



Easy Maintenance



Shimmery Finish

Complies to the

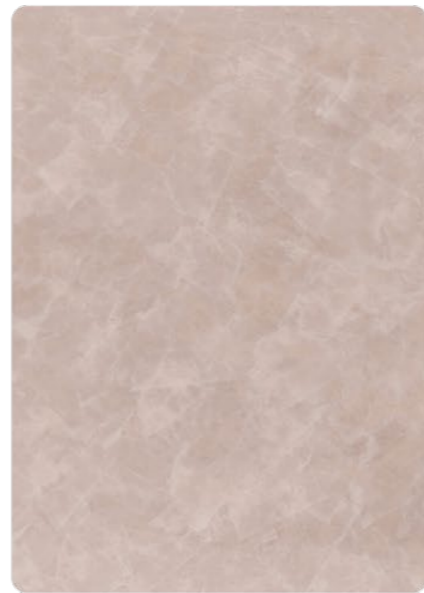
- American California Proposition 65
- LEED, U.S. Green Building Council Standards



**SRT-201** Pewter Grey



**SRT-203** Light Steel Blue



**SRT-209** Light Sephia



**SRT-214** Light Sapphire



**SRT-219** Oyster Beige



**SRT-225** Blue Waves



**SRT-231** Malted Mocha



**SRT-232** Pale Lavender



**SRT-233** Ocean Surface



**SRT-201** Pewter Grey



**SRT-214** Light Sapphire



**SRT-203** Light Steel Blue

All color shown are as close to the actual Suzuka® Strato® colors as modern printing techniques permit, nonetheless, there are still color/tonne differences.

**We highly recommend seeing actual samples before ordering.**



SRT-232 Pale Lavender

Strato® Taffeta

Application Video

# Application Technique



Preparation:

- Cover the edges of surface that won't be painted by masking it with tape, paper or plastic.
- Clean up the wall surface to ensure it is free from dirt and dust.



## 1 Primer

Roll 2 layers of primer on the entire surface. Allow 30 minutes to dry between the layers. (The primer can be diluted with maximum 3% of clean water)

**Tool:** Roller



## 2 Sanding (Optional)

Sand the entire surface in circular motion to ensure the surface is smooth.

**Tool:** 600 Grit Sand Paper

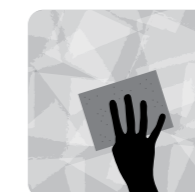


## 3 Texture Coat

Scrape texture coat in a random criss cross pattern. 2-3 layers. Every layer requires 30 minutes to dry.

(Do Not Dilute)

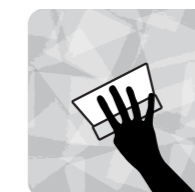
**Tool:** Stainless Steel Scrapper



## 4 Sanding

Sand the entire surface in circular motion to enhance the pattern.

**Tool:** 600 Grit Sand Paper



## 5 Topcoat

Scrape on topcoat SR-Top 2 in a random criss cross overlapping patterns. Allow 1 hour to dry.

Taffeta has a **shimmering** pearl effect topcoat. For a **matte** finishing, please request **SR-Top 1**.

**Tool:** Stainless Steel Scrapper

**IMPORTANT:**

Color may vary on application technique & amount of material used.

**Dilution Guide:**

Primer : Max 3% of clean water.  
Texture : Do not dilute.

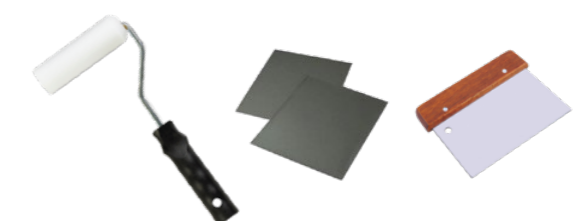


## Packing Data

1 L	Primer
1 L	Texture Coat
0.5 L	Topcoat (SR-Top 2)

**Coverage** (per set)

WALL	4.5 sqm
CEILING	3.5 sqm



**Tools:** Roller, Sand Paper (600 Grit) & Stainless Steel Scrapper.